

3M Science.
Applied to Life.™

If you can imagine it,
you can do it.

Graphic Materials Product Catalog



**We've
got you.**



**Work better, faster,
more creatively with
products that perform
to your high standards.**



Fire up your reputation.

As a graphics manufacturer, customers come to you to bring their visions to life. 3M's Graphics & Signage product portfolio, empowers you to transform, elevate and energize every surface of their brand.

From car wraps that convert vehicles into attention-grabbing mobile advertising to wall graphics that create experiential environments, our solutions are packed with the features you need to help you and your customers get the attention you deserve.

Contents

06	Vehicles & Fleet	10	Windows & Glass	14	Buildings & Walls
18	Floors & Sidewalks	22	Backlit Signs	26	Signs & Displays
30	Key Overlaminates	34	Installation Tools	38	Warranty
40	Installation	42	GREENGUARD Gold	44	Product Specs

Wow on wheels.

These 3M films have what it takes to make an impression on the move. Innovative design and installation features allow for fast and easy installs and looks that last. Whether you're creating custom graphics, messaging or colorful designs, all of these vehicles have one destination: greatness.



▶ **3M™ Wrap Film 2080-GC451 Gloss Silver Chrome**

CAUTION
Before using chrome wrap, please ensure compliance with all applicable laws and regulations. Restrictions on chrome wraps may vary by jurisdiction. You accept responsibility for legal and regulatory compliance and for any liability arising from your use of chrome wrap.



Wrap Film 2080-GC451 Gloss Silver Chrome comes in 60" so you can wrap most vehicles without seams.

Vehicles & Fleet



▲
3M™ Controltac™ Graphic Film with Comply™ v3 Adhesive
IJ180Cv3 and 3M™ Scotchcal™ Luster Overlaminate 8519

Vehicles & Fleet

Product	Description	Film	Key Overlaminate	Product Advantages
780mC-10R*	3M™ Scotchlite™ Print Wrap Film 780mC-10R	Retroreflective	8418G, 8518, 8519, 8548G, 8549L	<ul style="list-style-type: none"> • Robust properties enable conformability • Heat recovery minimizes bruising • Retroreflective at wide viewing angles
SV480mC LX480mC	3M™ Envision™ Print Wrap Film SV480mC 3M™ Envision™ Print Wrap Film LX480mC	Opaque	8548G, 8549L, 8550M	All that IJ180mC offers and more, non-PVC, 150% stretch, excellent for installation in extreme temps, horizontal warranty
IJ180mC-10 IJ180mC-114 IJ180mC-120	3M™ Print Wrap Film IJ180mC-10, IJ180mC-114, IJ180mC-120	Opaque/Clear/ Metallic	8418G, 8518, 8519, 8520, 8548G, 8549L, 8550M, 8528, 8900, 8915	Excellent for wraps, 130% stretch, medium/low initial tack, slideability, air release and snap-up
IJ180mC-10UR	3M™ Print Wrap Film IJ180mC-10UR	Opaque	8418G, 8518, 8519, 8520, 8900	Ultra-removable adhesive removes cleanly without heat or chemicals
IJ180mC-10LSE	3M™ Print Wrap Film IJ180mC-10LSE	Opaque	8418G, 8518, 8519, 8520, 8548G, 8549L, 8550M, 8528, 8900	For substrates with Low Surface Energy, 130% stretch, slideability, pressure activated and snap-up
IJ180mC-10SLS	3M™ Print Wrap Film IJ180mC-10SLS	Opaque	8418G, 8518, 8519, 8520, 8548G, 8549L, 8550M, 8528, 8900	For substrates that are Stainless Steel, 130% stretch, slideability, pressure activated and snap-up
IJ180Cv3	3M™ Controltac™ Graphic Film with Comply™ v3 Adhesive IJ180Cv3	Opaque	8418G, 8518, 8519, 8520, 8548G, 8549L, 8550M, 8528, 8900, 8915	Industry favorite for trailers and box trucks, 130% stretch, slideability, air release and snap-up
IJ175Cv3	3M™ Print Wrap Film IJ175Cv3	Opaque	8418G, 8518, 8519, 8520, 8548G, 8549L, 8550M, 8528, 8900, 8915	Excellent for wraps, low initial tack, 130% stretch, slideability, air release and good removal
IJ8150	3M™ Scotchcal™ Clear View Graphic Film IJ8150	Transparent	8418G, 8518, 8914	<ul style="list-style-type: none"> • Optical clarity with excellent printability in a durable and even conformable film • Print unique effects, even see-through images
8170-P50	3M™ Window Film 8170-P50	Perforated	8418G, 8518, 8914	<ul style="list-style-type: none"> • As a cast vinyl, offers excellent lifting resistance and durability • Offered with 50/50 perforation pattern
40C-10R 40C-20R 40C-114R	3M™ Controltac™ Print Film 40C-10R, 40C-20R, 40C-114R	Opaque/Clear	8418G, 8518, 8519, 8520	<ul style="list-style-type: none"> • Go-to, multi-use film • For flat or simple curves • 7-year expected performance life
48C-20R	3M™ Envision™ Print Film 48C-20R	Opaque	8048G, 8050M	<ul style="list-style-type: none"> • Non-PVC with all the versatility of 40C • For flat or simple curves • Easy application and removal

Solid-Color Films

1080/2080	3M™ Wrap Film Series 1080	Solid-Color	8900	<ul style="list-style-type: none"> • Ready to use right out of the box — with or without graphic protection • Features slideable and repositionable pressure-activated adhesive with non-visible air release channels, removable • 2080 - added film protective layer and more conformable
180mC	3M™ Controltac™ Graphic Film with Comply™ Adhesive Series 180mC	Solid-Color	8900	Film series 180mC with micro Comply™ Adhesive has non-visible air release channels for fast and easy, bubble-free graphic installations
7725/7125	3M™ Scotchcal™ ElectroCut™ Graphic Film Series 7725/7125	Solid-Color ElectroCut™	1920DR, 9740i	<ul style="list-style-type: none"> • 2-mil premium films designed for electronic cutting and thermal transfer • 7725 moisture-resistant synthetic liner lays flat and won't split • Flat and flat with rivets
SC50	3M™ Scotchcal™ Graphic Film Series SC50	Solid-Color	1920DR, 9740i	<ul style="list-style-type: none"> • 3-mil intermediate films designed for electronic cutting and thermal transfer • Excellent cutting and weeding and removable adhesive • For flat or simple curves

*This product is not yet intended for plotter or die-cut applications.

Raise your glass.

Transform windows into wins. With the simple placement of a window film, your customers can take advantage of this amazing real estate to enhance their image. From perforated films to transparent films to printable films, there's an abundance of options to let your talent shine through.



Edge sealing is required for all perforated window graphics in order to be warranted.

- ▶ 3M™ Scotchcal™ Clear View Graphic Film IJ8150
- 3M™ Scotchcal™ ElectroCut™ Graphic Film Series 7725
- 3M™ Scotchcal™ Translucent Graphic Film Series IJ3630



When installing on windows, always trim the film 1/8 - 1/4 inch (3 to 6 mm) away from all rubber gaskets and silicone sealer.

Windows & Glass



COZILEE
COFFEE

▲ 3M™ Controltac™ Print Film 40C-114R

MONDAY - FRIDAY 6AM - 8PM
SATURDAY - SUNDAY 7AM - 8PM

Windows & Glass

Product	Description	Film	Key Overlaminates	Product Advantages
40C-114R	3M™ Controltac™ Print Film 40C-114R	Clear	8508, 8509, 8510M	<ul style="list-style-type: none"> • Easy, dry-apply installation • Up to 7-year expected performance life • Removable film for easy updates
IJ8150	3M™ Scotchcal™ Clear View Graphic Film IJ8150	Transparent	8518, 8914	<ul style="list-style-type: none"> • Optical clarity with excellent printability in a durable and even conformable film • Print unique effects, even see-through images
8170-P50 8170-P40	3M™ Window Film 8170-P50 3M™ Window Film 8170-P40	Perforated	8518, 8914	<ul style="list-style-type: none"> • As a cast vinyl, offers excellent lifting resistance and durability • 50/50 perforation pattern with 8170-P50 • 60/40 perforation pattern with 8170-P40
IJ61	3M™ Changeable Graphic Film IJ61	Clear	N/A	<ul style="list-style-type: none"> • First or second surface • Wet or dry application • Changeable adhesive for easy removal
IJ67	3M™ Scotchcal™ Perforated Window Film IJ67	Perforated	8518, 8914	<ul style="list-style-type: none"> • 60/40 perforation pattern • Removable adhesive for easy updates • For budget-minded, short-term applications
7725/7125	3M™ Scotchcal™ ElectroCut™ Graphic Film Series 7725/7125	Solid-Color ElectroCut™	N/A	<ul style="list-style-type: none"> • 2-mil premium films designed for electronic cutting and thermal transfer • 7725 moisture-resistant synthetic liner lays flat and won't split • Clear adhesive for two way viewing
SC50	3M™ Scotchcal™ Graphic Film Series SC50	Solid-Color	N/A	<ul style="list-style-type: none"> • 3-mil intermediate films designed for electronic cutting and thermal transfer • Excellent cutting and weeding and removable adhesive • Clear adhesive for two way viewing
Decorative Polyester	3M™ Decorative Polyester Glass Finish	Transparent	N/A	<ul style="list-style-type: none"> • Clear glass finish that can be used to create custom color and design with UV inkjet or UV screen printing

Make a scene.

Buildings and walls are a huge branding opportunity. With their outstanding reliability, ease of use and creative latitude, 3M films give you the confidence to create stunning graphics on these surfaces regardless of texture, size or weather conditions. The world is officially your canvas.

▲
3M™ Envision™ Print Wrap Film LX480mC and
3M™ Envision™ Luster Wrap Overlaminate 8549L



Save on removal costs for long term displays by applying two layers of graphics (four total layers) at once.



Test your walls. The 3M™ Adhesion Test Kit for SMOOTH substrates helps graphic manufacturers identify the best film to use on walls in about 20 minutes.

Buildings & Walls



3M™ Print Wrap Film IJ180mC-10

Buildings & Walls

Product	Description	Film	Key Overlamines	Product Advantages
780mC-10R*	3M™ Scotchlite™ Print Wrap Film 780mC-10R	Retroreflective	8418G, 8518, 8519, 8520 8548G, 8549L	Robust, reflective film conforms to textured walls
SV480mC LX480mC	3M™ Envision™ Print Wrap Film SV480mC 3M™ Envision™ Print Wrap Film LX480mC	Opaque	8520, 8549L (textured walls), 8550M, 8600, 8915	All that IJ180mC offers and more, non-PVC, 150% stretch, excellent for textured surfaces like brick or stucco, and smooth walls
IJ180mC-10 IJ180mC-114 IJ180mC-120	3M™ Print Wrap Film IJ180mC-10, IJ180mC-114, IJ180mC-120	Opaque Clear Metallic	8418G, 8519, 8520, 8549L, 8550M, 8600, 8915	For smooth walls, reliable adhesion, durability, slideability, air release and snap-up
IJ180mC-10UR	3M™ Print Wrap Film IJ180mC-10UR	Opaque	8518, 8519, 8520, 8900	Ultra-removable adhesive removes cleanly without heat or chemicals
180mC	3M™ Controltac™ Graphic Film with Comply™ Adhesive Series 180mC	Solid-Color	8900	Film series 180mC with micro Comply™ Adhesive Technology has non-visible air release channels for fast and easy, bubble-free graphic installations
40C-10R 40C-20R 40C-114R	3M™ Controltac™ Print Film 40C-10R, 40C-20R, 40C-114R	Opaque/Clear	8508, 8509, 8510M	<ul style="list-style-type: none"> • Go-to, multi-use film for flat/simple curves • Excellent printability • 7-year expected performance life
48C-20R	3M™ Envision™ Print Film 48C-20R	Opaque	8048G, 8050M	<ul style="list-style-type: none"> • Non-PVC with all the versatility of 40C • For flat or simple curves • Easy application and removal
IJ35C	3M™ Scotchcal™ Graphic Film with Comply™ Adhesive Series IJ35C	Opaque	8508, 8509, 8510M	For budget-priced applications where removability isn't a concern
IJ39-20	3M™ Scotchcal™ High Tack Graphic Film IJ39-20	Opaque	8508, 8509, 8510M	<ul style="list-style-type: none"> • High-tack adhesive for hard-to-stick surfaces • Sticks to many low-surface energy plastics
7725/7125	3M™ Scotchcal™ ElectroCut™ Graphic Film Series 7725/7125	Solid-Color ElectroCut™	1920DR, 9740i	<ul style="list-style-type: none"> • 2-mil premium films designed for electronic cutting and thermal transfer • 7725 moisture-resistant synthetic liner lays flat and won't split • Flat and flat with rivets
SC50	3M™ Scotchcal™ Graphic Film Series SC50	Solid-Color	1920DR, 9740i	<ul style="list-style-type: none"> • 3-mil intermediate films designed for electronic cutting and thermal transfer • Excellent cutting and weeding and removable adhesive • For flat or simple curves

* This product is not yet intended for plotter or die-cut applications.

Stop them in their tracks.

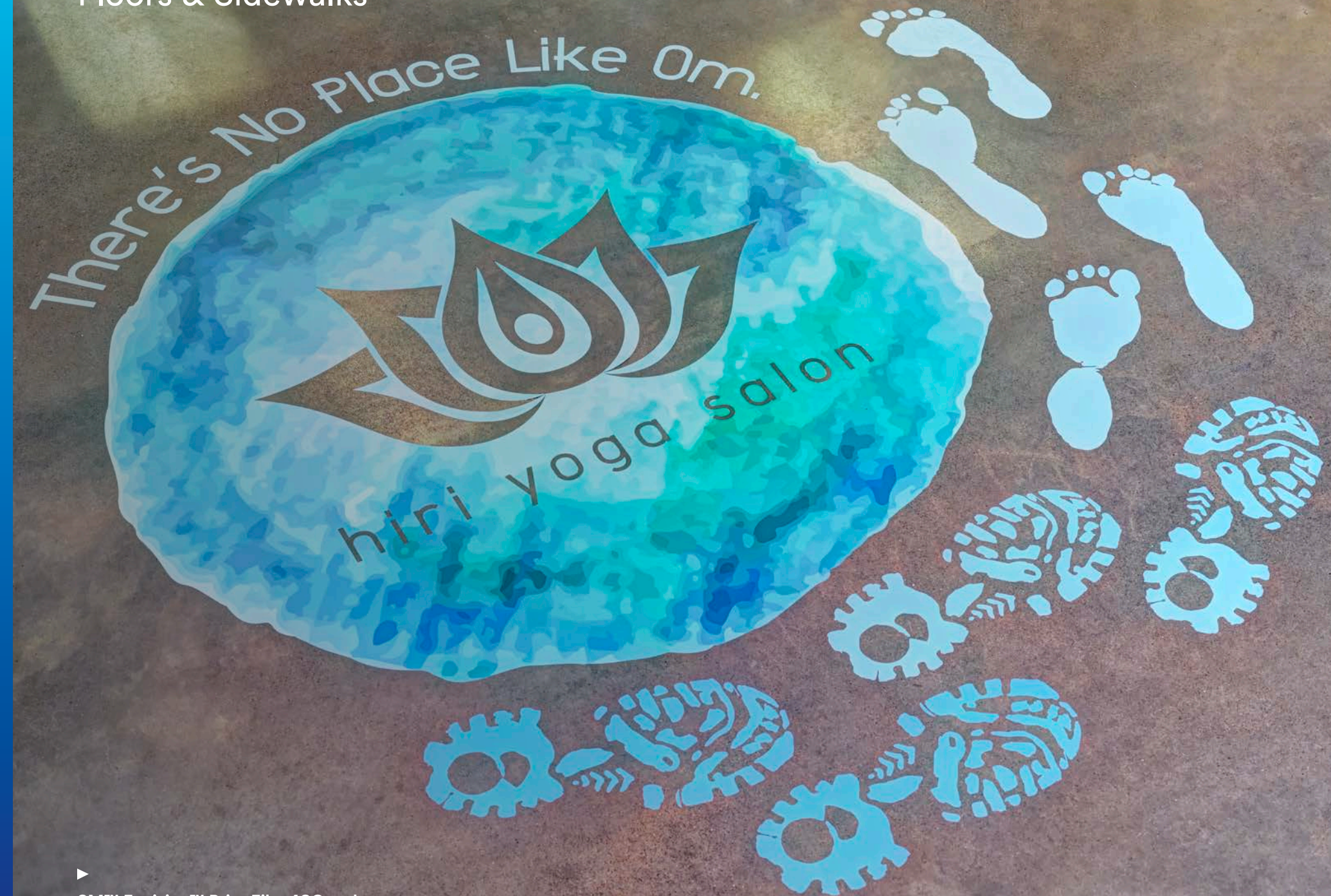
From sales messages to play spaces, our printable films give you the power to create floors and sidewalks that knock them off their feet. Each film is engineered for easy installation and hard-wearing durability, so you can always create floors they'll look up to.

▶
3M™ Controltac™ Print Film 40C-20R and
3M™ Scotchcal™ Luster Overlamine 3645



Recommended overlaminates
meet UL 410 Slip Resistance of
Floor Surface Materials.

Floors & Sidewalks



▶ 3M™ Envision™ Print Film 48C and 3M™ Envision™ Matte Overlaminates 8050M

Floors

Product	Description	Film	Key Overlaminates	Product Advantages
40C-10R 40C-20R 40C-114R	3M™ Controltac™ Print Film 40C-10R, 40C-20R, 40C-114R	Opaque/Clear	3645, 8509	<ul style="list-style-type: none"> Indoor, short-term promotional programs Removable adhesive for easy updates Can be used for other applications
48C-20R	3M™ Envision™ Print Film 48C-20R	Opaque	3645, 8050M	<ul style="list-style-type: none"> Non-PVC film with removable adhesive Indoor, short-term promotional programs Can be used for other applications

Sidewalks

Product	Description	Film	Key Overlaminates	Product Advantages
3662-10	3M™ Scotchcal™ Graphic Film 3662-10	Opaque	3647	<ul style="list-style-type: none"> For exterior sidewalk applications Excellent hiding power Screen print only



▶ 3M™ Controltac™ Print Film 40C and 3M™ Scotchcal™ Luster Overlaminates 8509



Go with the glow.

Help your customers' brands shine with 3M's backlit sign translucent and inkjet printable films, flexible substrates, light management films and overlaminates. Choose from an expanded line of translucent film colors that will help you fill even more customer needs and ensure global brand consistency.

- ▶ 3M™ Envision™ Flexible Substrate FS-1
- 3M™ Envision™ Translucent Film Series 3730
- 3M™ Scotchcal™ Overlaminates 3658G/3660M



Did you know? 3M offers more than 100 standard translucent film colors – as well as custom color capabilities. Our color selections were determined after extensive research and market insight, and are consistent with emerging trends in design and corporate identity.

Backlit Signs



▶ 3M™ Dual-Color Film 3635

Backlit Signs

Product	Description	Film	Key Overlamines	Product Advantages
P3	3M™ Panagraphics™ III Wide Width Flexible Substrate	Translucent	3658G, 3660M	<ul style="list-style-type: none"> • Up to 9 years of outdoor durability — backed by the 3M™ MCS™ Warranty • For inkjet direct printing, film and cut film decoration • Wide width, splice free for seamless backlit signs
3630	3M™ Scotchcal™ Translucent Graphic Film Series 3630	Translucent	3658G, 3660M	<ul style="list-style-type: none"> • Up to 9 years of outdoor durability — backed by the 3M™ MCS™ Warranty • Designed for fluorescent lighting applications • Available in standard colors (many with PANTONE® references) and custom colors
IJ3630-20	3M™ Scotchcal™ Translucent Graphic Film IJ3630-20	Translucent	3658G, 3660M	<ul style="list-style-type: none"> • Matte surface finish eliminates glare and provides uniform color in reflected and transmitted light • Solvent, UV and latex inkjet printable • Up to 6 years of outdoor durability — backed by the 3M™ MCS™ Warranty
IJ3650-114	3M™ Scotchcal™ Graphic Film Series IJ3650-114	Translucent	3658G, 3660M	<ul style="list-style-type: none"> • Up to 6 years of outdoor durability — backed by the 3M™ MCS™ Warranty • Luster surface finish eliminates glare and provides uniform color in reflected and transmitted light • Solvent, UV and latex inkjet printable
FS-1	3M™ Envision™ Flexible Substrate FS-1	Translucent	3658G, 3660M	<ul style="list-style-type: none"> • Designed for use with LED light sources • For inkjet direct printing, film and cut film decoration • Up to 9 years of outdoor durability — backed by the 3M™ MCS™ Warranty
3730	3M™ Envision™ Translucent Film Series 3730	Translucent	3658G, 3660M	<ul style="list-style-type: none"> • Designed for use with LED light sources • Available in standard colors (many with PANTONE® references) and custom colors • Up to 9 years of outdoor durability — backed by the 3M™ MCS™ Warranty
IJ3730	3M™ Envision™ Translucent Film IJ3730	Transparent	3658G, 3660M	<ul style="list-style-type: none"> • Up to 6 years of outdoor durability — backed by the 3M™ MCS™ Warranty • Solvent, UV and latex inkjet printable • Designed for use with LED light sources

All signs point to success.

Windows, walls, floors, signs, vehicles and more. Our versatile films can pretty much cover it all. Their performance features and adhesion qualities offer a world of marketing opportunities almost anywhere you look. If a customer can dream it, you're now prepared to make it happen.

▶ 3M™ Controltac™ Print Film 40C



OneTen
CYCLES



Ultra-removable films mean little to no adhesive is left behind on most surfaces, allowing the customer to remove them easily.

Signs & Displays



▶ 3M™ Controltac™ Graphic Film with Comply™ v3 Adhesive IJ180Cv3 and 3M™ Scotchcal™ Matte Overlaminates 8520

Signs & Displays

Product	Description	Film	Key Overlaminates	Product Advantages
40C-10R 40C-20R 40C-114R	3M™ Controltac™ Print Film 40C-10R, 40C-20R, 40C-114R	Opaque/Clear	8508, 8509, 8510M	<ul style="list-style-type: none"> • Go-to, multi-use film for flat/simple curves • Excellent printability • 7-year expected performance life
48C-20R	3M™ Envision™ Print Film 48C-20R	Opaque	8048G, 8050M	<ul style="list-style-type: none"> • Non-PVC with all the versatility of 40C • For flat or simple curves • Easy application and removal
IJ35C	3M™ Scotchcal™ Graphic Film with Comply™ Adhesive IJ35C	Opaque	8508, 8509, 8510M	<ul style="list-style-type: none"> • Air release channels for easy, bubble-free installations • Gray adhesive for hiding power, making it easy to cover outdated promotions • Budget-friendly price
IJ180mC-10 IJ180mC-114 IJ180mC-120	3M™ Print Wrap Film IJ180mC-10, IJ180mC-114, IJ180mC-120	Opaque Clear Metallic	8519, 8520, 8549L, 8550M, 8915	For general signs, reliable adhesion, durability, slideability, air release and snap-up
IJ680CR	3M™ Scotchlite™ Removable Reflective Film with Comply™ Adhesive IJ680CR	Reflective	8418G, 8518, 8519, 8548G, 8549L	For signs that are seen during the day and are reflective at night
IJ5100R	3M™ Scotchlite™ Reflective Graphic Film 5100R/IJ5100R	Reflective	8518, 8519	For signs that are seen during the day and are reflective at night

Solid-Color Films

180mC	3M™ Controltac™ Graphic Film with Comply™ Adhesive Series 180mC	Solid-Color	8900	Film series 180mC with micro Comply™ Adhesive Technology has non-visible air release channels for fast and easy, bubble-free graphic installations
7725/7125	3M™ Scotchcal™ ElectroCut™ Graphic Film Series 7725/7125	Solid-Color ElectroCut™	N/A	<ul style="list-style-type: none"> • 2-mil premium films designed for electronic cutting and thermal transfer • 7725 moisture-resistant synthetic liner lays flat and won't split • For flat or simple curves
SC50	3M™ Scotchcal™ Graphic Film Series SC50	Solid-Color	N/A	<ul style="list-style-type: none"> • 3-mil intermediate films designed for electronic cutting and thermal transfer • Excellent cutting and weeding and removable adhesive • For flat or simple curves

Key Overlaminates

Come out on top.

Add a little flair to your wrap films or a lot of protection, with our selection of overlaminates. Available in a variety of finishes, our overlaminates can add textured finish to wall wraps, layer special effects on car wraps, provide lasting protection to signs and more.



▶ 3M™ Print Wrap Film with 3M™ Décor Overlamine 8600M-301 Riverbed

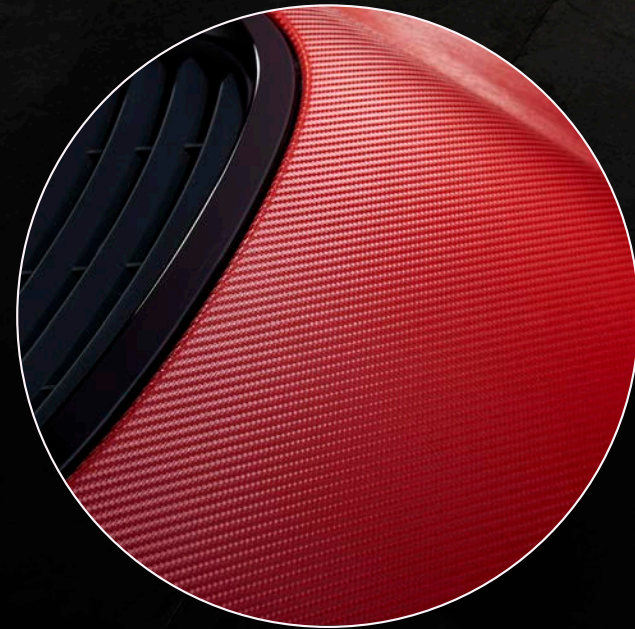
Take a deep breath

AND LET IT GO



Add texture to your graphic with 3M™ Décor Overlaminates. And for longer term displays choose overlaminates that provide UV protection.

Key Overlaminates



▶ **3M™ Wrap Overlaminates 8900-CF100**
Carbon Fiber

Key Overlaminates

Product	Description	Applications	Type
3645	3M™ Scotchcal™ Luster Overlaminates 3645	Floors	Luster
3647	3M™ Scotchcal™ Matte Overlaminates 3647	Floors, Sidewalks	Matte
3658G	3M™ Scotchcal™ Gloss Overlaminates 3658G	Backlit Signs	Gloss
3660M	3M™ Scotchcal™ Matte Overlaminates 3660M	Backlit Signs	Matte
8048G	3M™ Envision™ Gloss Overlaminates 8048G	Vehicles/Fleet, Walls, Displays	Gloss
8050M	3M™ Envision™ Matte Overlaminates 8050M	Vehicles/Fleet, Walls, Displays	Matte
8418G	3M™ Scotchcal™ Thin Gloss Overlaminates 8418G	Vehicles/Fleet, Walls	Gloss
8508	3M™ Scotchcal™ Gloss Overlaminates 8508	Walls, Displays	Gloss
8509	3M™ Scotchcal™ Luster Overlaminates 8509	Walls, Floors, Displays	Luster
8510M	3M™ Scotchcal™ Matte Overlaminates 8510M	Walls, Displays	Matte
8518	3M™ Scotchcal™ Gloss Overlaminates 8518	Vehicles/Fleet, Walls, Windows	Gloss
8519	3M™ Scotchcal™ Luster Overlaminates 8519	Vehicles/Fleet, Walls, Displays	Luster
8520	3M™ Scotchcal™ Matte Overlaminates 8520	Vehicles/Fleet, Walls, Displays	Matte
8528	3M™ Scotchcal™ Gloss Overlaminates 8528	Vehicles/Fleet	Gloss
8548G	3M™ Envision™ Gloss Wrap Overlaminates 8548G	Vehicles/Fleet, Walls	Gloss
8549L	3M™ Envision™ Luster Wrap Overlaminates 8549L	Vehicles/Fleet, Walls, Displays	Luster
8550M	3M™ Envision™ Matte Wrap Overlaminates 8550M	Vehicles/Fleet, Walls, Displays	Matte
8600	3M™ Décor Overlaminates 8600	Walls, Displays	Classic Linen White Fir Plaster Riverbed Knit
8900	3M™ Wrap Overlaminates Series 8900	Vehicles/Fleet	Brushed Carbon Fiber Sparkle (multiple finishes)
8914	3M™ Scotchcal™ Optically Clear Overlaminates 8914	Vehicles/Fleet, Windows	Gloss
8915	3M™ Scotchcal™ Ultra-Matte Overlaminates 8915	Walls, Displays	Ultra-Matte

Installation Tools

3M™ Knifeless Tapes

To be the best, use the best.

Don't risk nicks or cuts from a blade on the vehicle or substrate, use 3M™ Knifeless Tapes. Knifeless tape technology is designed to cut graphic film without a knife for clean, risk-free cuts every time.



Installation Tools

Tools cut out for success.



3M™ Finish Line Knifeless Tape
Easily cuts most vinyl wrap films — complete installations without a blade.



3M™ Bridge Line Knifeless Tape
Evenly cuts graphics bridging from one panel to the next.



3M™ Perf Line Knifeless Tape
Cuts uniform margins between window graphics and rubber moldings.



3M™ Design Line Knifeless Tape
Engineered to create highly contoured designs with sharp, clean edges.



3M™ Tri Line Knifeless Tape (6mm and 9mm)
Ensures accurate, consistent stripe width from one end of the vehicle to the other.



3M™ Two-Handled Textured Surface Applicator TSA-4 for Large Area
Increases installation productivity. Requires heat gun (not included).



The TSA roller reduces installation time and arm fatigue.



3M™ Air Release Tool 391x
Punctures applied film to remove air bubbles.



3M™ Hand Applicator PA1-Blue and PA1-Gold
Reusable squeegee-type applicator for smoothing film during installs.



3M™ Power Grip Rivet Brush Applicator RBA-3
Burnishes film over rivets.



3M™ Rivet Brush Applicator RBA-1
Helps to install films over rivets.



3M™ Power Grip Magic Pad Rivet Applicator CMP-1
Designed for installing 3M™ Controltac™ Graphic Films with Comply™ Adhesive over rivets.



3M™ Power Grip Multi-Pin Air Release Tool MPP-1
Uniquely designed to release the air around rivets in one single motion.



3M™ Textured Surface Applicator TSA-2
Conforms heated film to mortar joints and inside corners.



**3M™ Roller L (large)
3M™ Roller S (small)**
Finishing tool for vehicle channels.



3M™ Rapid Roller Applicator CPA-2
Exclusively for applying 3M™ Controltac™ Graphic Films with Comply™ Adhesive.



3M™ Power Grip Applicator for 3M™ Comply™ Adhesive Films CPA-1
Covers large areas with uniform pressure distribution.



3M™ Adhesion Test Kit for SMOOTH Substrates ATK-1
Instructions, instruments and film samples to perform adhesion value testing.



3M™ Textured Surface Applicator TSA-3
Conforms heated film around cut edges and in corners.



3M™ Vehicle Channel Applicator Tool VCAT-2
Helps to conform film into vehicle channels.



3M™ Textured Surface Applicator TSA-1
Conforms large areas of film onto textured surfaces.

Geek Wraps® tools

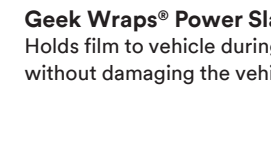
All of our Geek Wraps® tools are part of the Certified and Preferred training programs.



Geek Wraps® Wrap Wand
Helps to lay vinyl into tight crevices and score body seams.



Geek Wraps® Heat Gun Grip
Adheres around heat gun body, staying clear of hot sections and exhaust areas.



Geek Wraps® Power Slam Magnets
Holds film to vehicle during installation without damaging the vehicle or graphics.



Geek Wraps® Soft Edge Squeegee
Micro-fiber edge does not heat up and absorbs water from the edges of film.



Geek Wraps® Air Wrangler Torch Roller
Helps to apply film to rivets and textured surfaces.



Geek Wraps® Wrap Juice
For use with Comply™ Adhesive films to help squeegees easily glide over warmed film.



Geek Wraps® Emblem Removal Tool
Removes emblems intact without damaging the vehicle's paint.



Feel confident; you're covered.

3M™ MCS™ Warranty

**The most comprehensive finished
graphics warranty in the industry.**

The 3M™ MCS™ Warranty ensures that all elements of a graphic – from film and ink, to adhesive, tape, and protective coating – will perform at its best, consistently over time, and in the harshest environments.





Up your wrap game.

Gain a competitive advantage with 3M Graphics Installation Programs. We offer the best-in-class Graphics Installation Training and Testing Programs across the country.

Professional installers who pass unique 3M installation testing programs will be designated as the best in the business. If your installation skills need a little fine tuning, we can give you personalized advanced training to get you prepared for an installer testing program.



3M Advanced Installation Training
Get three days of personal, hands-on advanced training from 3M Graphics Authorized Trainers. Practice your skills on 10 stations, including vehicle graphics, smooth and textured walls and floor graphics.



3M Certified Graphics Installation Company Training and Testing



3M Preferred Graphics Installer Testing
Successfully passing this accreditation will increase your status as an installer.



3M Endorsed Installer for Knifeless Tape
Qualified 3M Graphics Installers will get hands-on training using 3M™ Knifeless Tape technology. Once you've successfully completed the 3M Endorsed Knifeless Tape assessment, you can differentiate yourself from other installers while increasing the value you offer your customers.

GREENGUARD Gold



▶ 3M™ Envision™ Print Film 48C and
3M™ Envision™ Gloss Overlaminates 8048G

No PVCs, no phthalates, no problem.

3M™ Envision™ Films and Overlaminates have earned the prestigious GREENGUARD Gold Certification. This certification requires that products meet some of the world's most rigorous third-party testing standards for low emissions of volatile organic compounds into indoor environments. Now you can offer a greener graphic solution that will contribute to healthier indoor air quality.



**GREENGUARD
Gold Certified**

3M products now covered by GREENGUARD Gold Certification are:

- 3M™ Envision™ Print Wrap Films LX480mC and SV480mC
- 3M™ Envision™ Wrap Overlaminates 8548G, 8549L and 8550M
- 3M™ Envision™ Print Film 48C-20R
- 3M™ Envision™ Overlaminates 8048G and 8050M

Product Specs

Printable Films

NUMBER	IJ MEDIA	AVAILABILITY		APPLICATIONS										DURABILITY/WARRANTIES			APPLICATION SURFACES			APPLICATION SURFACES (CONT.)					FILM CHARACTERISTICS					ADHESIVE				LIFE CYCLE OF PRODUCT				IMAGING METHOD			LINER						
		Roll widths (in inches): Core sizes (in inches)	Roll lengths (in yards unless otherwise specified)	Trailers/Box Trucks	Vehicles	Watercraft	Transit	Label	Signage-Backlit	Signage-Non Backlit	Awning	Smooth Walls	Textured Walls & Surfaces	Window or Glass	Floor	Expected Performance Life (years)	3M™ MCS™ Warranty	PG	Flat	Flat with Rivets	Corrugated	Simple Curves	Compound Curves	Deep Channels	Flexible Substrates	Textured Walls & Surfaces	GREENGUARD Gold	Material	Cast or Non-Cast	Thickness (mils)	Face Finish	Opaque/Translucent/Transparent/Perforated/Retroreflective/Metallic	Adhesive Color	Characteristics	Ultra-Removable	Removable with Heat	Removable with Heat and/or Chemicals	Not Removable	Installation Characteristics (1 high skill - 5 low skill)	24 hour Adhesion (1 low - 5 high)	Ultimate Adhesion (1 low - 5 high)	Removability (1 not removable - 5 removable)	Inkjet-Solvent/Eco-Solvent	Inkjet-UV	Inkjet Latex	Polyethylene-Coated Paper	Polyester
40C-10R 40C-20R	3M™ Controltac™ Print Film 40C-10R and 40C-20R	30, 54, 60; 3, 6	50/100/200	•	•			•		•		•	•		7			•			•						Vinyl	Non-Cast	3	G,M	Opaque	Gray	Pressure-Activated with Non-visible Air Release Channels		•			5	3	2	4	•	•	•	•		
40C-114R	3M™ Controltac™ Print Film 40C-114R	30, 54, 60; 3, 6	50/100/200	•	•			•		•		•	•		7			•			•						Vinyl	Non-Cast	3	G	Transparent	Clear	Pressure-Activated with Non-visible Air Release Channels		•			5	3	2	4	•	•	•	•		
48C-20R	3M™ Envision™ Print Film 48C-20R	54; 3	50	•	•			•		•		•	•		5			•			•				•	Non-PVC	Non-Cast	3	M	Opaque	Gray	Pressure-Activated with Non-visible Air Release Channels		•			4	3	2	4	•	•	•	•			
780mC-10R	3M™ Scotchlite™ Print Wrap Film 780mC-10R	48; 3, 6	25/50/100	•	•	•	•			•					9	•	•	•	•	•	•			•		Vinyl	N/A	7	L	Retroreflective	Clear	Pressure-Activated with Non-visible Air Release Channels		•			4	2	2	4	•	•	•	•			
8170-P40 8170-P50	3M™ Window Film 8170-P40 and 8170-P50	36, 53.5; 3, 6	10/25/50										•		3	•		•			•						Vinyl	Cast	4	G	Opaque/Perforated	Clear	Pressure-Sensitive		•			2	2	2	3	•	•	•	•		
IJ160	3M™ Controltac™ Graphic Film IJ160	30, 48, 54, 60; 3, 6	50/100/150/200	•				•		•		•	•		7	•	•	•			•						Vinyl	Non-Cast	4	M	Opaque	Gray	Pressure-Activated		•			3	3	2	4	•	•	•	•		
IJ160C	3M™ Controltac™ Graphic Film with Comply™ Adhesive IJ160C	30, 48, 54, 60; 3, 6	50/100/150/200	•				•		•		•	•		7	•	•	•			•						Vinyl	Non-Cast	4	M	Opaque	Gray	Pressure-Activated with Air Release Channels		•			5	3	2	4	•	•	•	•		
IJ170Cv3	3M™ Scotchcal™ Graphic Film with Comply™ v3 Adhesive IJ170Cv3	54; 3, 6	50/100/200	•	•	•	•	•		•		•	•		10	•	•	•	•	•	•						Vinyl	Cast	2	L	Opaque	Gray	Pressure-Sensitive with Non-Visible Air Release Channels		•			3	4	5	2	•	•	•	•		
IJ175Cv3	3M™ Controltac™ Graphic Film with Comply™ v3 Adhesive IJ175Cv3	54, 60; 3, 6	50/100/200	•	•	•	•	•		•		•	•		10	•	•	•	•	•	•						Vinyl	Cast	2	L	Opaque	Gray	Pressure-Activated with Non-visible Air Release Channels		•			4	4	5	2	•	•	•	•		
IJ180	3M™ Controltac™ Graphic Film IJ180	30, 36, 48, 54, 60; 3, 6	25/50/100/200	•	•	•	•	•		•	•	•	•		10	•	•	•	•	•	•						Vinyl	Cast	2	L	Opaque	Gray	Pressure-Activated		•			3	3	4	3	•	•	•	•		
IJ180C	3M™ Controltac™ Graphic Film with Comply™ Adhesive IJ180C	30, 36, 48, 54, 60; 3, 6	25/50/100/200	•	•	•	•	•		•		•	•		10	•	•	•	•	•	•						Vinyl	Cast	2	L	Opaque	Gray	Pressure-Activated with Air Release Channels		•			5	3	4	3	•	•	•	•		
IJ180Cv3	3M™ Controltac™ Graphic Film with Comply™ v3 Adhesive IJ180Cv3	30, 36, 48, 54, 60; 3, 6	25/50/100/200	•	•	•	•	•		•		•	•		10	•	•	•	•	•	•						Vinyl	Cast	2	L	Opaque	Gray	Pressure-Activated with Non-visible Air Release Channels		•			4	3	4	3	•	•	•	•		
IJ180mC-10	3M™ Print Wrap Film IJ180mC-10	30, 36, 48, 54, 60; 3, 6	25/50/100/200	•	•	•	•	•		•		•	•		10	•	•	•	•	•	•						Vinyl	Cast	2	L	Opaque	Gray	Pressure-Activated with Non-visible Air Release Channels		•			4	3	4	3	•	•	•	•		
IJ180mC-10LSE	3M™ Print Wrap Film IJ180mC-10LSE	48, 54, 60; 3	25/50/100					•							10	•		•	•	•						Vinyl	Cast	2	L	Opaque	Gray	Pressure-Activated with Non-visible Air Release Channels				•	2	5	5	1	•	•	•	•			
IJ180mC-10SLS	3M™ Print Wrap Film IJ180mC-10SLS	48, 54, 60; 3, 6	25/50/100/200	•						•					10	•	•	•	•	•	•						Vinyl	Cast	2	L	Opaque	Gray	Pressure-Activated with Non-visible Air Release Channels				•	3	5	5	1	•	•	•	•		
IJ180mC-10UR	3M™ Print Wrap Film IJ180mC-10UR	48, 54, 60; 3, 6	50/100/200	•	•					•		•	•		8	•	•	•	•	•	•						Vinyl	Cast	2	L	Opaque	Gray	Pressure-Activated with Non-visible Air Release Channels	•				4	1	1	5	•	•	•	•		
IJ180mC-114	3M™ Print Wrap Film IJ180mC-114	48, 54, 60; 3	25/50	•	•	•	•	•		•		•	•		10	•	•	•	•	•	•						Vinyl	Cast	2	L	Transparent	Clear	Pressure-Activated with Non-visible Air Release Channels		•			4	3	4	3	•	•	•	•		
IJ180mC-120	3M™ Print Wrap Film IJ180mC-120	54, 60, 48; 3	25/50	•	•	•	•	•		•		•	•		10	•	•	•	•	•	•						Vinyl	Cast	2	L	Metallic	Gray	Pressure-Activated with Non-visible Air Release Channels		•			4	3	4	3	•	•	•	•		
IJ35-10 IJ35-20	3M™ Scotchcal™ Graphic Film IJ35-10 and IJ35-20	30, 54, 60.5; 3, 6	50/100/200					•		•					5			•			•					Vinyl	Non-Cast	3.2	G,M	Opaque	Gray	Pressure-Sensitive				•	1	5	5	1	•	•	•	•			
IJ35C-10 IJ35C-20	3M™ Scotchcal™ Graphic Film with Comply™ Adhesive Series IJ35C	30, 54, 60.5; 3, 6	50/100/200					•		•					5			•			•					Vinyl	Non-Cast	3.2	G,M	Opaque	Gray	Pressure-Sensitive with Air Release channels				•	2	5	5	1	•	•	•	•			
IJ3555	3M™ Scotchcal™ Changeable Graphic Film IJ3555	30, 54, 60; 3, 6	50/100/150/200	•				•		•		•	•		2	•	•	•			•						Vinyl	Non-Cast	4	M	Opaque	Gray	Pressure-Sensitive		•			2	1	1	5	•	•	•	•		
IJ36-20	3M™ Transit Ad Graphic Film IJ36-20	54, 61.5; 3, 6	50/100/200	•						•					1			•			•						Vinyl	Non-Cast	3.4	M	Opaque	Gray	Pressure-Sensitive		•			2	1	1	5	•	•	•	•		
IJ3630-20	3M™ Scotchcal™ Translucent Graphic Film IJ3630-20	48, 54, 60; 3, 6	50/100/150/200							•		•	•		7	•	•	•			•						Vinyl	Cast	2	M	Translucent	Clear	Pressure-Sensitive				•	1	5	5	1	•	•	•	•		
IJ3650-10	3M™ Scotchcal™ Graphic Film Series IJ3650-10	30, 48, 54, 60; 3, 6	25/50/100/150/200	•				•		•		•	•		10	•	•	•	•	•	•						Vinyl	Cast	2	L	Opaque	Gray	Pressure-Sensitive				•	2	1	1	5	•	•	•	•		
IJ3650-114	3M™ Scotchcal™ Graphic Film Series IJ3650-114	48, 54, 60; 3, 6	50	•				•	•	•		•	•		8	•	•	•	•	•	•						Vinyl	Cast	2	L	Transparent	Clear	Pressure-Sensitive				•	1	5	5	1	•	•	•	•		

Product Specs

Printable Films, Colored Films, Transluents and Flexible Substrates

NUMBER	IJ MEDIA	AVAILABILITY		APPLICATIONS											DURABILITY/WARRANTIES			APPLICATION SURFACES			APPLICATION SURFACES (CONT.)					FILM CHARACTERISTICS					ADHESIVE				LIFE CYCLE OF PRODUCT				IMAGING METHOD			LINER								
		Roll widths (in inches); Core sizes (in inches)	Roll lengths (in yards unless otherwise specified)	Trailers/Box Trucks	Vehicles	Watercraft	Transit	Label	Signage-Backlit	Signage-Non Backlit	Awning	Smooth Walls	Textured Walls & Surfaces	Window or Glass	Floor	Expected Performance Life (years)	3M™ MCS™ Warranty	PG	Flat	Flat with Rivets	Corrugated	Simple Curves	Compound Curves	Deep Channels	Flexible Substrates	Textured Walls & Surfaces	GREENGUARD Gold	Material	Cast or Non-Cast	Thickness (mil)	Face Finish	Opaque/Transparent/Perforated/Retroreflective/Metallic	Adhesive Color	Characteristics	Ultra-Removable	Removable with Heat	Removable with Heat and/or Chemicals	Not Removable	Installation Characteristics (1 high skill - 5 low skill)	24 hour Adhesion (1 low - 5 high)	Ultimate Adhesion (1 low - 5 high)	Removability (1 not removable - 5 removable)	Inkjet-Solvent/Eco-Solvent	Inkjet-UV	Inkjet-Latex	Polyethylene-Coated Paper	Polyester	Kraft Paper		
IJ3730	3M™ Envision™ Translucent Film IJ3730	54; 3, 6	50/100/150/200					•		•					7	•	•	•			•				•	Leaf	Vinyl	Cast	2	M	Translucent	Clear	Pressure-Sensitive				•	1	5	5	1	•	•	•	•					
IJ380Cv3	3M™ Controltac™ Wrap Film with Comply™ v3 Adhesive IJ380Cv3	54; 3	25/50			•	•								10	•	•	•	•	•	•	•	•				Vinyl	Cast	2	L	Opaque	Gray	Pressure-Activated with Non-visible Air Release Channels				•	4	5	5	2	•	•	•	•					
IJ39-20	3M™ Scotchcal™ High Tack Graphic Film IJ39-20	54; 3	50	•					•		•				5			•			•						Vinyl	Non-Cast	3.5	M	Opaque	Clear	Pressure-Sensitive				•	1	5	5	1	•	•	•	•					
IJ46-20	3M™ Transit Wrap Graphic Film IJ46-20	54, 60; 3, 6	50/100/200	•			•			•					1			•			•						Vinyl	Non-Cast	4	M	Opaque	Gray	Pressure-Sensitive	•				2	1	1	5	•	•	•	•					
IJ5000	3M™ Scotchlite™ Reflective Graphic Film 5000/IJ5000	48; 3	50	•			•			•					1.5			•	•		•						Vinyl	N/A	6	L	Retroreflective	Clear	Pressure-Sensitive				•	1	3	3	1	•	•		•					
IJ5100R	3M™ Scotchlite™ Reflective Graphic Film 5100R/IJ5100R	48; 3	10/50	•			•	•							7		•	•	•		•						Vinyl	N/A	7	L	Retroreflective	Clear	Pressure-Sensitive		•			2	3	3	3	•	•	•	•					
IJ61	3M™ Changeable Graphic Film IJ61	54; 3	50												1			•			•						Vinyl	Non-Cast	3	G	Transparent	Clear	Pressure-Sensitive	•				1	2	1	5	•	•	•	•					
IJ63-20	3M™ Scotchcal™ Changeable Translucent Graphic Film IJ63-20	54; 3, 6	50/100/200												1			•			•						Vinyl	Non-Cast	3.2	M	Translucent	Clear	Pressure-Sensitive		•			1	2	1	5	•	•	•	•					
IJ67	3M™ Scotchcal™ Perforated Window Film IJ67	54; 3	10/25/50	•			•								1			•			•						Vinyl	Non-Cast	5.9	M	Opaque	Clear	Pressure-Sensitive		•			2	2	4	2	•	•	•	•					
IJ680	3M™ Scotchlite™ Reflective Graphic Film IJ680	36, 48; 3, 6	50/100	•			•	•							9	•	•	•	•	•							Vinyl	N/A	7	L	Retroreflective	Clear	Pressure-Activated				•	2	3	4	1	•	•	•	•					
IJ680CR	3M™ Scotchlite™ Removable Reflective Film with Comply™ Adhesive IJ680CR	36, 48; 3, 6	50/100	•			•	•							9	•	•	•	•	•							Vinyl	N/A	7	L	Retroreflective	Clear	Pressure-Activated with Air Release Channels		•			3	3	3	3	•	•	•	•					
IJ8150	3M™ Scotchcal™ Clear View Graphic Film IJ8150	54, 60; 3	25/50	•	•		•		•	•					7	•		•			•						Vinyl	Cast	2	G	Transparent	Clear	Pressure-Sensitive	•				1	3	2	4	•	•	•	•					
IJ8624	3M™ Scotchcal™ Graphic Film for Textured Surfaces IJ8624	30, 54; 3, 6	25/50/100/200												7			•			•						Vinyl	Cast	2	L	Opaque	Gray	Pressure-Sensitive		•			2	4	4	3	•		•	•					
LX480mC	3M™ Envision™ Print Wrap Film LX480mC	48, 54, 60; 3		•	•	•	•	•		•		•	•	•	11	•	•	•	•	•	•	•	•	•	•		High Performance non-PVC	N/A	2	L	Opaque	Gray	Pressure-Activated with Non-visible Air Release Channels				•	4	4	5	1		•	•	•					
SV480mC	3M™ Envision™ Print Wrap Film SV480mC	48, 54, 60; 3	50/100/	•	•	•	•	•		•		•	•	•	11	•	•	•	•	•	•	•	•	•	•		High Performance non-PVC	N/A	2	L	Opaque	Gray	Pressure-Activated with Non-visible Air Release Channels		•			4	3	4	3	•	•		•					
Colored Films																								Colored Films																										
SC50	3M™ Scotchcal™ Graphic Film Series SC50	48	5/50	•			•	•							5			•			•						Vinyl	Non-Cast	3	G, M	Opaque	Clear	Pressure-Sensitive		•			2	3	2	4							•		
1080 2080	3M™ Wrap Film Series 1080 3M™ Wrap Film Series 2080	60; 3	5/10/25/50	•	•	•	•	•							7++	•		•			•	•					Vinyl	Cast	3.5-5+	G, S, M, BR, CF	Opaque	Gray	Pressure-Activated with Non-visible Air Release Channels		•			5	3	4	4							•		
180mC	3M™ Controltac™ Graphic Film with Comply™ Adhesive 180mC	36, 48, 60 (varies by color)	50/100/150/200	•	•	•	•	•		•		•	•	•	10	•		•	•	•	•	•	•	•	•		Vinyl	Cast	3	G, M, L	Opaque	Gray	Pressure-Activated with Non-visible Air Release Channels		•			4	3	4	3							•		
7125	3M™ Scotchcal™ ElectroCut™ Graphic Film Series 7125	24, 48, 60	5/50/100/200/250	•			•	•							8	•		•	•		•						Vinyl	Cast	3	G, M, L	Opaque	Clear	Pressure-Sensitive				•	1	4	5	1							•		
7725	3M™ Scotchcal™ ElectroCut™ Graphic Film Series 7725	48, 60	5/50/100/200/250	•			•	•							8	•		•	•		•						Vinyl	Cast	3	G, M, L	Opaque	Clear	Pressure-Sensitive				•	1	4	5	1							•		
Transluents																								Transluents																										
3630 3730	3M™ Scotchcal™ Translucent Graphic Film Series 3630 3M™ Envision™ Translucent Film Series 3730	48, 60*	50												7	•		•									Vinyl	Cast	3	M	Translucent	Clear	Pressure-Sensitive				•	1	4	5	1							•		
Flexible Substrates																								Flexible Substrates																										
FS-1	3M™ Envision™ Flexible Substrate FS-1	79, 98, 102, 126, 150, 165, 197	164												6	•											Vinyl	N/A	20	L	Translucent	N/A																•	•	•
P3	3M™ Panagraphics™ III Wide Width Flexible Substrate	59, 79, 98, 102, 126, 150, 165, 197	164												6	•											Vinyl	N/A	20	L	Translucent	N/A																•	•	•

*60" available in select colors

++Up to 7 years; see Product Bulletin for details

Product Specs

Graphic Protection

		AVAILABILITY		APPLICATIONS										DURABILITY/WARRANTIES			APPLICATION SURFACES				APPLICATION SURFACES (CONT.)				FILM CHARACTERISTICS						ADHESIVE				TEST RATINGS (1=poor; 5=excellent)				IMAGING METHOD			LINER					
NUMBER	IJ MEDIA	Roll widths (in inches); Core sizes (in inches)	Roll lengths (in yards unless otherwise specified)	Trailers/Box Trucks	Vehicles	Watercraft	Transit	Label	Signage-Backlit	Signage-Non Backlit	Awning	Smooth Walls	Textured Walls & Surfaces	Window or Glass	Floors/Sidewalks	Expected Performance Life (years)	3M™ MCS™ Warranty	PG	Flat	Flat with Rivets	Corrugated	Simple Curves	Compound Curves	Deep Channels	Flexible Substrates	Textured Surfaces	GREENGUARD Gold	Material	Cast or Non-Cast	Thickness (mils)	Face Finish	Opaque/Transparent/Perforated/Retroreflective/Metallic	Adhesive Color	Characteristics	Removable with Heat and/or Chemicals	Not-Removable	Compatible Base Films (2mil vinyl, (4) mil vinyl, Envijision)	Fuel Resistance	Graffiti Resistance	High Temperature Resistance	Scratch Resistance	Inkjet-Solvent/Eco-Solvent	Inkjet-UV	Inkjet-Latex	Polyethylene-Coated Paper	Polyester	Kraft Paper
1920DR	3M™ Screen Print Dirt Resistant Gloss Clear 1920DR	N/A	N/A	•			•	•								5		•	•									N/A	N/A	N/A	G	Transparent	N/A	N/A		•	4	3	2	1	2	•		•			
3619	3M™ Scotchcal™ Luster Overlaminate 3619	48, 54, 60; 3	50						•	•	•					6	•		•						•		Vinyl	Cast	2	L	Transparent	Clear	Pressure-Sensitive		•	FS-1, P3	2	2	1	2	•	•	•			•	
3620	3M™ Scotchcal™ Matte Overlaminate 3620	48, 54, 60; 3	50						•	•	•					6	•		•						•		Vinyl	Cast	2	M	Transparent	Clear	Pressure-Sensitive		•	FS-1, P3	2	2	1	1	•	•	•			•	
3645	3M™ Scotchcal™ Luster Overlaminate 3645	36, 48, 54; 3	50											•		1	•	•	•								Vinyl	Non-Cast	8	L	Transparent	Clear	Pressure-Sensitive		•	IJ160, 40C, 3662	1	1	1	4	•	•	•			•	
3647	3M™ Scotchcal™ Matte Overlaminate 3647	48; 3	50											•		0.25	•		•								Vinyl	Non-Cast	19	M	Transparent	Clear	Pressure-Sensitive		•	3662	1	1	1	4					•		
3658G	3M™ Scotchcal™ Gloss Overlaminate 3658G	48, 54, 60; 3	50						•	•	•					9	•		•			•			•		Vinyl	Cast	2	G	Transparent	Clear	Pressure-Sensitive		•	FS-1, P3	3	3	1	4	•	•	•			•	
3660M	3M™ Scotchcal™ Matte Overlaminate 3660M	48, 54, 60; 3	50						•	•	•					9	•		•						•		Vinyl	Cast	2	M	Transparent	Clear	Pressure-Sensitive		•	FS-1, P3	3	3	1	5	•	•	•			•	
8048G	3M™ Envision™ Gloss Overlaminate 8048G	54; 3	50	•			•	•	•	•		•		•		4			•							•	Non-PVC	Non-Cast	2	G	Transparent	Clear	Pressure-Sensitive		•	4	5	5	3	5	•	•	•			•	
8050M	3M™ Envision™ Matte Overlaminate 8050M	54; 3	50	•			•	•	•	•		•		•		4			•							•	Non-PVC	Non-Cast	2	M	Transparent	Clear	Pressure-Sensitive		•	4	5	5	3	4	•	•	•			•	
8418G	3M™ Scotchcal™ Thin Gloss Overlaminate 8418G	48.5, 54, 60; 3	25/50	•	•	•	•		•							6	•		•	•	•	•	•	•			Vinyl	Cast	1.2	G	Transparent	Clear	Pressure-Sensitive		•	2, 4, Env	2	3	1	1	•	•	•			•	
8508	3M™ Scotchcal™ Gloss Overlaminate 8508	30, 54, 61; 3	50/100				•	•	•	•		•				4			•								Vinyl	Cast	2.3	G	Transparent	Clear	Pressure-Sensitive		•	4	3	3	1	1	•	•	•			•	
8509	3M™ Scotchcal™ Luster Overlaminate 8509	30, 54, 61; 3	50/100				•	•	•	•		•		•		4			•								Vinyl	Non-Cast	3	L	Transparent	Clear	Pressure-Sensitive		•	4	2	3	1	1	•	•	•			•	
8510M	3M™ Scotchcal™ Matte Overlaminate 8510M	30, 54, 61; 3	50/100				•	•	•	•		•		•		4			•								Vinyl	Non-Cast	3.2	M	Transparent	Clear	Pressure-Sensitive		•	4	2	3	1	1	•	•	•			•	
8518	3M™ Scotchcal™ Gloss Overlaminate 8518	36, 48.5, 54, 60; 3	25/50/100	•	•	•	•	•	•	•						8	•	•	•	•	•	•	•	•			Vinyl	Cast	2	G	Transparent	Clear	Pressure-Sensitive		•	2, 4, Env	3	3	1	1	•	•	•		•		
8519	3M™ Scotchcal™ Luster Overlaminate 8519	36, 48.5, 54, 60; 3	25/50/100	•	•	•	•	•	•	•		•				8	•	•	•	•	•	•	•	•			Vinyl	Cast	2	L	Transparent	Clear	Pressure-Sensitive		•	2, 4, Env	3	2	1	2	•	•	•			•	
8520	3M™ Scotchcal™ Matte Overlaminate 8520	36, 48.5, 54, 60; 3	25/50/100	•	•	•	•	•	•	•		•				8	•	•	•	•	•	•	•	•			Vinyl	Cast	2	M	Transparent	Clear	Pressure-Sensitive		•	2, 4, Env	3	2	1	3	•	•	•			•	
8528	3M™ Scotchcal™ Gloss Overlaminate 8528	54, 60; 3	25/50/100	•	•	•	•	•	•	•						9	•	•	•	•	•	•	•	•			Vinyl	Cast	2	G	Transparent	Clear	Pressure-Sensitive		•	2, 4, Env	2	3	1	3	•	•	•	•			•
8548G	3M™ Envision™ Gloss Wrap Overlaminate 8548G	54, 60; 3	25/50/100	•	•	•	•	•	•	•		•	•	•		9	•	•	•	•	•	•	•	•	•	•	•	High Performance non-PVC	N/A	2	G	Transparent	Clear	Pressure-Sensitive		•	Env	1	3	1	3	•	•	•		•	
8549L	3M™ Envision™ Luster Wrap Overlaminate 8549L	54; 3	25/50/100	•	•	•	•	•	•	•		•	•	•		9	•	•	•	•	•	•	•	•	•	•	High Performance non-PVC	N/A	2	L	Transparent	Clear	Pressure-Sensitive		•	Env	2	2	4	3	•	•	•			•	
8550M	3M™ Envision™ Matte Wrap Overlaminate 8550M	54, 60; 3	25/50/100	•	•	•	•	•	•	•		•	•	•		9	•	•	•	•	•	•	•	•	•	•	High Performance non-PVC	N/A	2	M	Transparent	Clear	Pressure-Sensitive		•	Env	3	1	4	4	•	•	•			•	
8600	3M™ Décor Overlaminate 8600	60; 3	25/50									•				8	•		•								Vinyl	Cast	2.5-3.5	M	Transparent	Clear	Pressure-Sensitive		•	2, 4	2	1	4	4	•	•	•			•	
8900	3M™ Wrap Overlaminate Series 8900	60; 3	25	•	•	•	•	•	•	•		•				4	•		•	•			•	•			Vinyl	Cast	2	G, L, M	Transparent	Clear	Pressure-Sensitive		•	2, 4, 1080	2	1	4	4	•	•	•	•			•
8914	3M™ Scotchcal™ Optically Clear Overlaminate 8914	48, 54; 3	10/25/50	•	•		•							•		8	•	•	•	•	•	•					Vinyl	Cast	2	G	Transparent	Optically Clear	Pressure-Sensitive		•	IJ8150 perf	2	1	1	3	•	•	•			•	
8915	3M™ Scotchcal™ Ultra-Matte Overlaminate 8915	49, 54, 60; 3	50	•			•		•	•		•		•		8	•	•	•	•	•	•	•				Vinyl	Cast	2	UM	Transparent	Clear	Pressure-Sensitive		•	2, 4	3	1	1	4	•	•	•	•			•
8991	3M™ Scotchgard™ Graphic and Surface Protection Film 8991	48; 3	50					•						•		3			•								Polyester	N/A	4	G	Transparent	Clear	Pressure-Sensitive		•	2, 4	5	5	3	5	•		•			•	
8991R	3M™ Scotchgard™ Graphic and Surface Protection Film 8991R	48; 3	50					•						•		3			•								Polyester	N/A	4	G	Transparent	Clear	Pressure-Sensitive		•	2, 4	5	5	3	5	•		•			•	
8993	3M™ Scotchgard™ Graphic and Surface Protection Film 8993	48; 3	50					•						•		5			•								Polyester	N/A	2	G	Transparent	Clear	Pressure-Sensitive	•		2, 4	5	5	5	3	•		•			•	
9740i	3M™ Screen Print UV Gloss Clear 9740i	N/A	N/A	•			•	•								6	•	•	•	•	•	•					N/A	N/A	N/A	G	Transparent	N/A	N/A		•	2, 4	1	1	1	1	•	•					
9760LX	3M™ Screen Print UV Gloss Clear 9760LX	N/A	N/A	•			•	•								6	•		•	•	•	•					N/A	N/A	N/A	G	Transparent	N/A	N/A		•	2, 4	1	1	1	1	•	•					

Online Tools



3M™ Graphics Hub

Your daily go-to resource with exclusive access to tips, case studies, white papers, product samples and more. Here you'll also find the **3M™ Graphics Install Wizard** software, designed to help Graphic Manufacturers and Installation Companies manage installations more efficiently, so you can spend more time growing your business.



Brand You

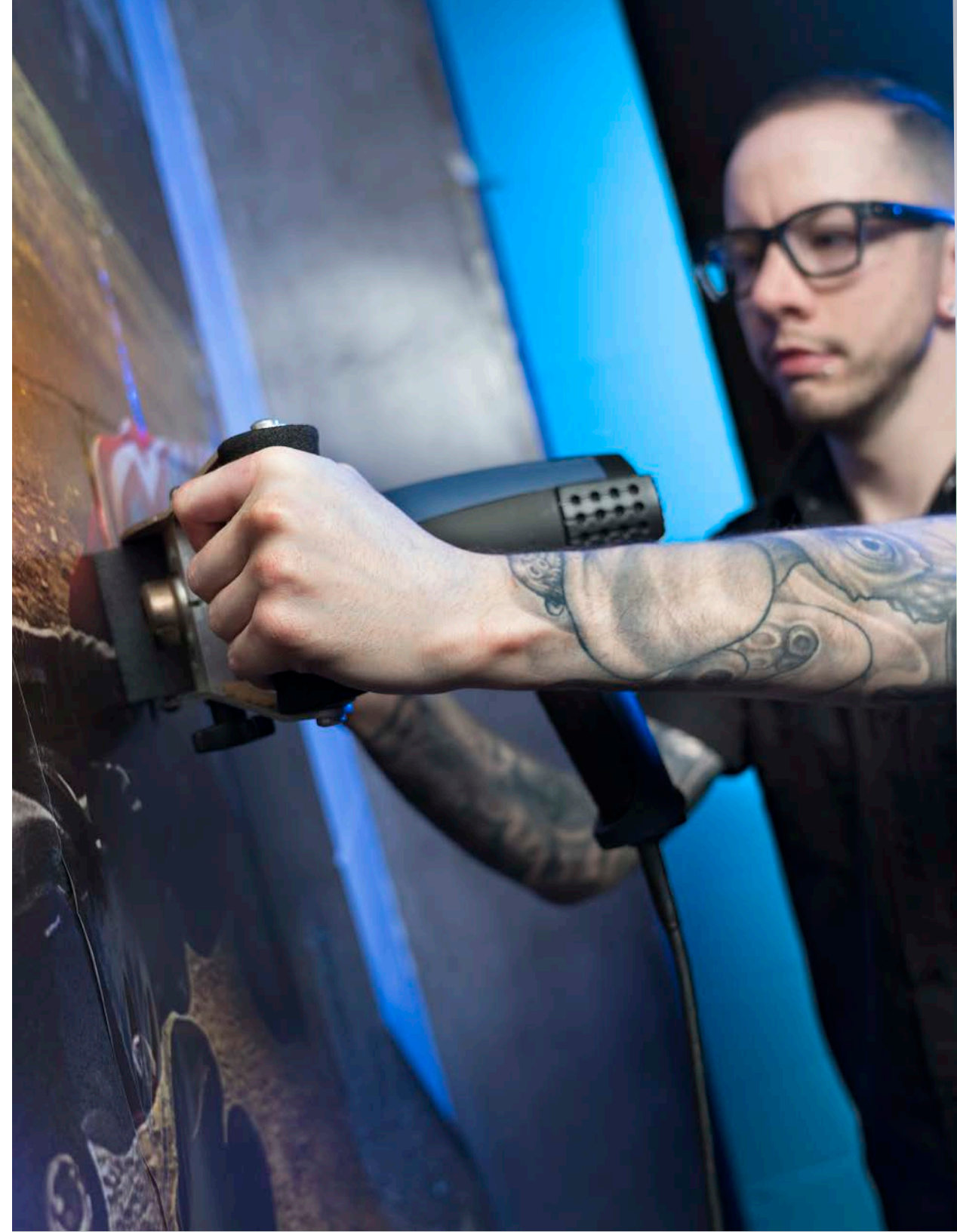
Our online hub is full of fresh content and industry-leading tools and resources to help your customers bring their branding vision to life.



COSMO

The 3M COmmercial Solutions MObile (COSMO) app gives you instant access to a wide range of informative videos and literature pieces on 3M's leading Commercial Graphics, Architectural Markets and Cleaning and Workplace Safety products.

Search 3M™ COSMO app on iOS or Android



**Success is yours
for the taking.**