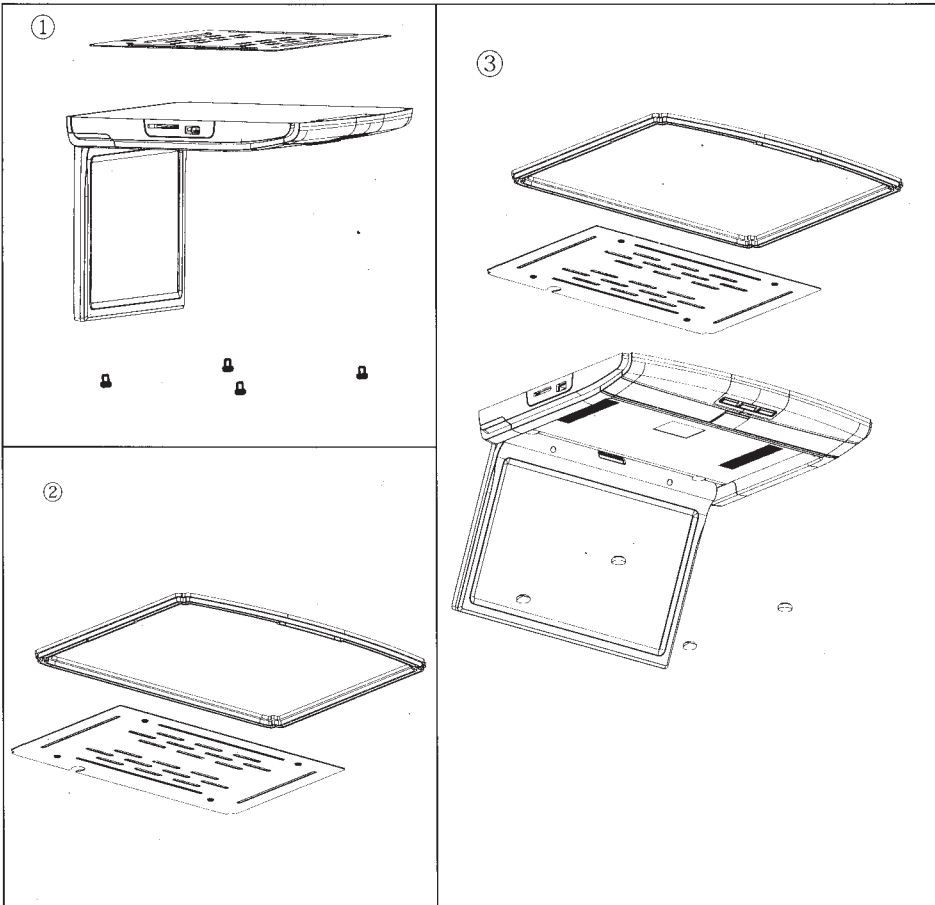


Installation

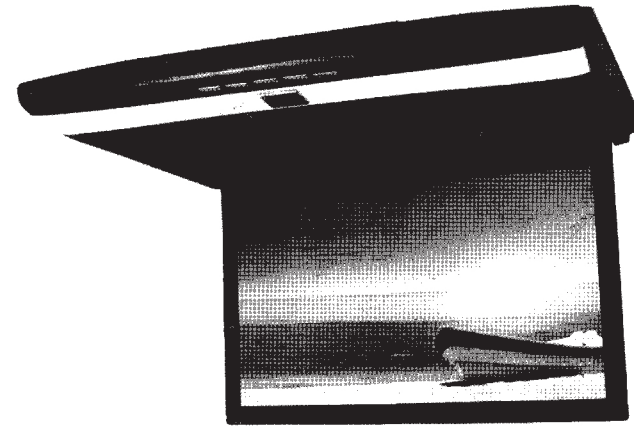
1. Take off the 4 screws, then remove the metal support bracket from the unit. As shown in the first illustration.

2. Tighten the metal support bracket to the ceiling of vehicle as shown in the second illustration, and leave a certain space to let the connecting wire pass through. (Take extra care to unbroken the ceiling of vehicle).

3. To install the unit to the metal support bracket, connecting with the unit and the wires passing through the remain space.



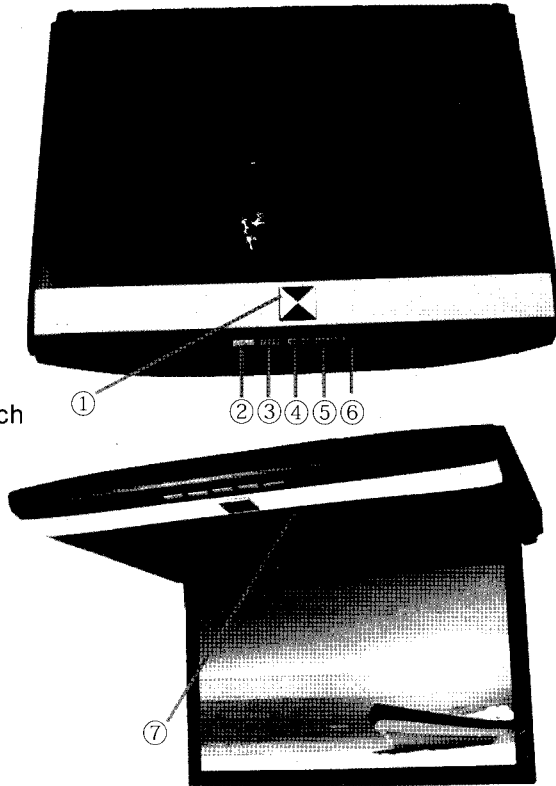
15.6" & 17.3" ROOF MOUNT MONITOR



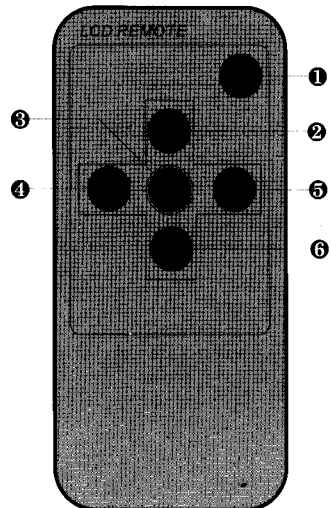
**OPERATING
INSTRUCTIONS**

Appearance and function

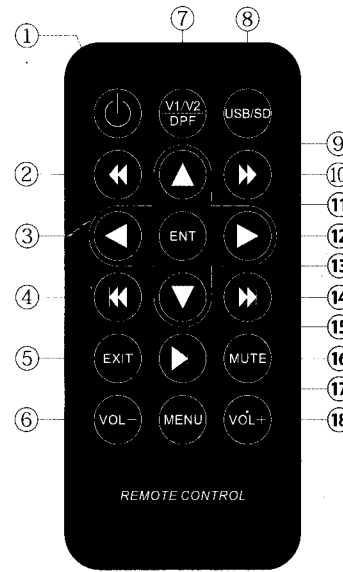
- ①.Open
- ②.Light switch
- ③.Analog+
- ④.MENU
- ⑤.Analog-
- ⑥.Power switch/AV Switch
- ⑦.Standby



Remote control panel



- ① Power on/off
- ② Video Switch
- ③ MENU
- ④ Analog-
- ⑤ Analog+
- ⑥ Mode Switch



- ① Power on/off
- ② Back rewind
- ③ Left
- ④ Last song
- ⑤ Exit
- ⑥ Volume-
- ⑦ AV switch
- ⑧ USB/SD switch
- ⑨ Up
- ⑩ Forward rewind
- ⑪ Enter
- ⑫ Right
- ⑬ Down
- ⑭ Next song
- ⑮ Play/Pause
- ⑯ MUTE
- ⑰ MENU
- ⑱ Volume+

Specifications

15.6"&17.3"Flip Down Monitor

Resolution:15.6inch:1920x1080/1366x768

17.3inch:1920x1080

Built-in IR Transmitter(optional)

2Video inputs

Built in Dual Dome Lights

Wireless Remote Control

Power Supply:DC 12V

Wiring Diagram

