



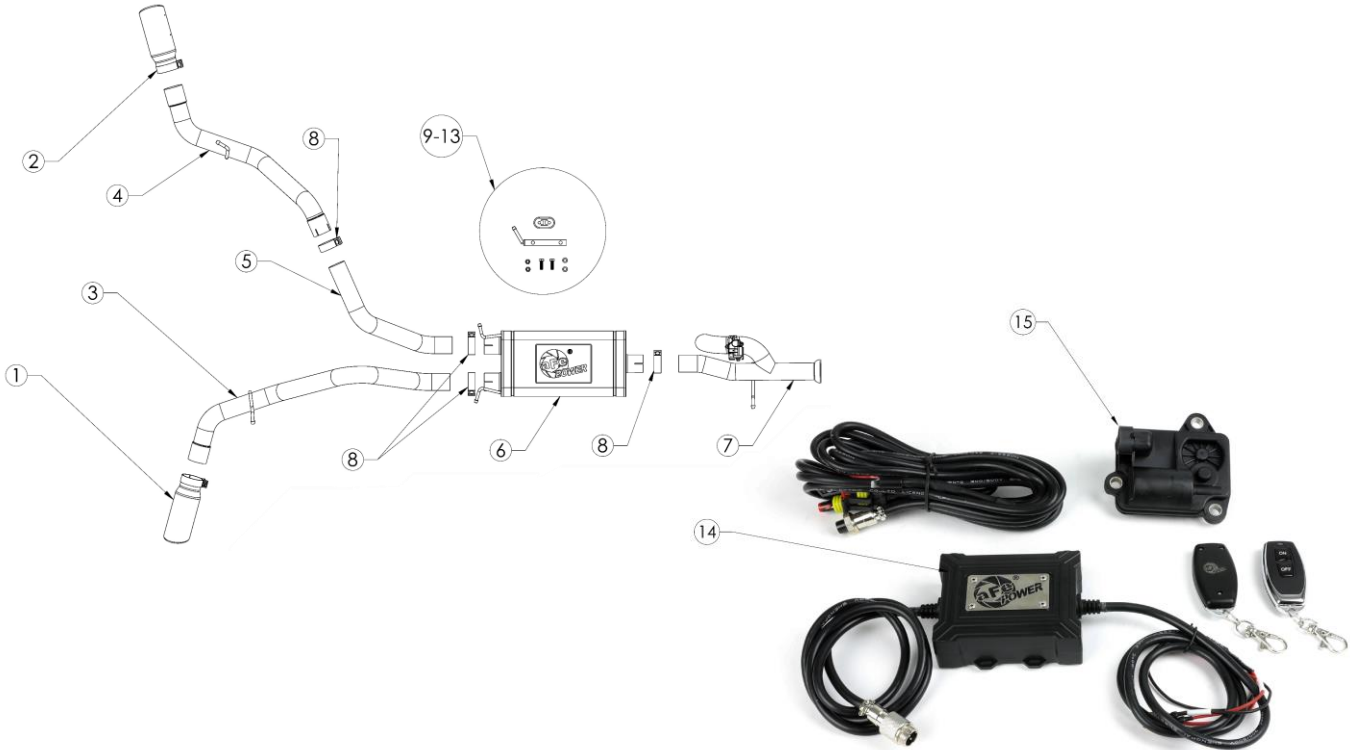
INSTALLATION INSTRUCTIONS

Cat-Back Exhaust

MAKE: GM
MODEL: Silverado/Sierra 1500
YEAR: 2009-2018
ENGINE: V6-4.3L/V8-4.8L & 5.3L

49-34133-B
 49-34133-P

NOTE: Will Only Fit SC/SB (119" WB)



Item	Description	Part Number	Quantity
1	EXH Tip 3-1/2 In x 4-1/2 Out x 12L Blk	49T35451-B12	1
1	EXH Tip 3-1/2 In x 4-1/2 Out x 12L Pol	49T35451-P12	1
2	EXH Tip 3-1/2 In x 4-1/2 Out x 12L Blk	49T35452-B12	1
2	EXH Tip 3-1/2 In x 4-1/2 Out x 12L Pol	49T35452-P12	1
3	S/A Tube, Right Tail-Pipe: 3" Dia x 69"L	05-245072	1
4	S/A Tube, Left Tail-Pipe: 3" Dia x 46.5"L	05-245074	1
5	Tube, Left Overaxle: 3"Dia x 31.5"L	05-245073	1
6	S/A Muffler Assembly	05-144073B	1
7	S/A EXH Cutout Assembly	05-245081	1
8	Clamp, Band: 3"	05-41055	5
9	S/A Bracket, Hanger	05-46154	1
10	Exhaust Isolation Mount	05-46050	1
11	Screw, Hex Cap: 1/2-13 x 1.5 Gr. 8	03-50439	2
12	Nut, Hex: 1/2-13, Gr. 5	03-50441	2
13	Washer, Split Lock: 1/2	03-50435	2
14	Controller, Exhaust Valve: Normal	05-70041	1
15	Motor, Exhaust Valve: 12 Volt	05-70042	1

aFe POWER recommends professional installation on this product. Thoroughly inspect the aFe POWER exhaust system to make sure there is no damage from shipping (if damage is noted, immediately contact aFe POWER customer service). Allow time for your vehicle to cool down prior to installation. When working on your vehicle proceed with caution. Wear protective safety equipment; eye goggles and gloves to ensure a safe installation.

Install band clamps to proper torque specifications of 40-45 ft-lb.



INSTALLATION INSTRUCTIONS

Cat-Back Exhaust

MAKE: GM
MODEL: Silverado/Sierra 1500
YEAR: 2009-2018
ENGINE: V6-4.3L/V8-4.8L & 5.3L

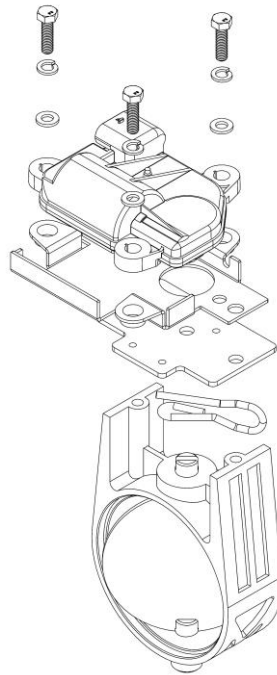
49-34133-B
49-34133-P

NOTE: Will Only Fit SC/SB (119" WB)

1. **(Read instructions prior to installation.)** It is recommended to not fully tighten the exhaust until it has been fully installed. Leave loose for adjustability.
2. Secure vehicle on jack stands (refer to your manual for specified jack stand positions).
3. For faster installation, spread out the parts of the exhaust alongside your vehicle as shown in the diagram above.
4. Secure the stock exhaust with jack/stands.
5. Remove the stock exhaust. Take caution not to damage the factory front flange, bolts, and isolation mounts as they will be reused.

6. Install Provided x1 Motor to the valve motor mount using the provided x3 bolts and spring clip.

Refer to FIG1 Below



7. Install the flared front pipe; it will require using the original OE band clamp. You will need to release the locking tab with a small screwdriver. Place the OE band clamp over the front pipe, but do not fully tighten the clamp down.
8. Slide the front part of the muffler into the rear of the mid-pipe. Then slip the rear hangers of the muffler into the OE rubber isolation mount.
9. Install the Right Passenger Side Tail pipe first, but do not fully tighten.



INSTALLATION INSTRUCTIONS

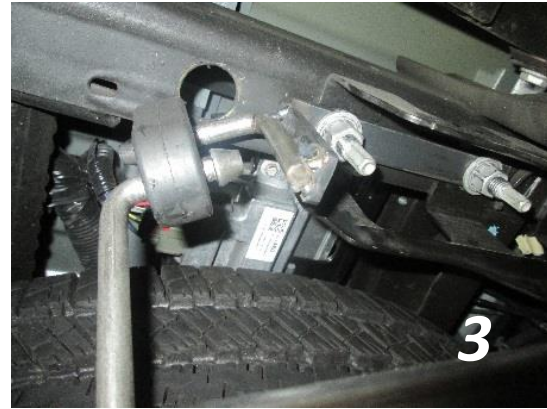
Cat-Back Exhaust

MAKE: GM
MODEL: Silverado/Sierra 1500
YEAR: 2009-2018
ENGINE: V6-4.3L/V8-4.8L & 5.3L

49-34133-B
49-34133-P

NOTE: Will Only Fit SC/SB (119" WB)

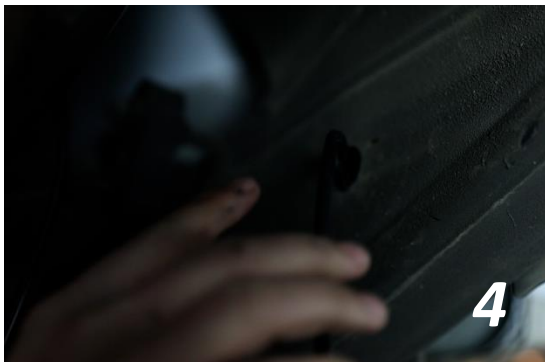
10. Now install the hanger bracket included with the kit and using the factory tow package bolts. Unbolt the OE nuts & bolts using a 19mm deep socket on the bottom side and 19mm wrench on the top fully. **(If factory tow package bolts are not present, use the provided (x2) lock washers, nuts, and bolts.) Refer to FIG 2 and FIG 3**



11. Next Install the Over-Axle, but do not fully tighten the band clamp.
12. Now slip the Left Tail Pipe into the Over-Axle Tube, then slide the hanger into the hanger bracket and rubber isolation mount provided. Do not fully tighten down band clamp.
13. Install both tips into the tail pipes. Adjust the tips to your desired position. Do not fully tighten the tips yet.
14. Position and align the entire exhaust system, now begin to fully tighten down all band clamps and bolts starting from the front flange and working your way back to the rear tailpipes ending at the tips.
15. If needed, zip ties are included with your kit to create addition clearance for the Left Tail Pipe axle breather & brake hoses

Note: You will need at least 1.5" of clearance from your spare tire and the left side of the exhaust. If you need addition clearance loosen your spare tire and move it away from the exhaust until you have the required clearance, then tighten spare tire back up

16. Connect the wire harness to the motor on the EXH cutout assembly. Run the remaining wire harness inside the frame towards the engine compartment and exit behind the front passenger tire as shown in **FIG 4 & FIG 5**. Secure using the provided zip ties.





INSTALLATION INSTRUCTIONS

MAKE: GM
MODEL: Silverado/Sierra 1500
YEAR: 2009-2018
ENGINE: V6-4.3L/V8-4.8L & 5.3L

Cat-Back Exhaust

49-34133-B

49-34133-P

NOTE: Will Only Fit SC/SB (119" WB)

17. In the engine compartment zip tie the control box along the wire harness next to the battery. Run the wire ring terminals to the battery and run the rest of the wire down the back of the firewall to meet the rest of the wire harness. Use provided zip ties to secure the wire. **Refer to FIG 6 and FIG 7**



18. Connect the wire harness together and tuck the remaining wire into the frame. Organize any other loose wires and secure with remaining zip ties.
19. Ensure that all the components of the aFe POWER exhaust system are aligned and are at a safe clearance from all wires, hoses, brake lines, body parts, and tires.
20. Start from the front of the aFe POWER exhaust system and evenly tighten all clamps and fasteners.
21. Start the vehicle and check for any leaks. If any leaks are found, determine cause and repair as necessary.
22. Remove vehicle from jacks stands.
23. It is recommended to re-tighten all clamps and hardware after 50-100 miles.