

# How to Switch to Amber Daytime Running Light (DRL) for AlphaRex 19-24 Ram 2500/3500/4500/5500 Headlights

## Table of Contents

- AMBER SWITCH PLUGS LOCATION
- CONNECT THE AMBER SWITCH PLUGS
- COMPLETE SWITCHING INTO AMBER DRL & PARKING LIGHTS

*Disclaimer: This installation article is a tutorial guide. By reading this article, you agree it is for reference only and AlphaRex USA and its distributors make no guarantee on the finished results. Under no circumstances whatsoever shall AlphaRex USA nor its distributors be liable for any damage, misuse or personal injuries. If you do not fully understand the installation procedure, it is highly recommended that you seek help from professional mechanics to do the installation.*

From **The product models list**, the LUXX-Series and NOVA-Series headlights for 2019-21 RAM 2500 come with optional switch plugs for Amber (Yellow color) DRL & Parking lights. *By default the DRL & Parking lights color are White from factory.*

**CUSTOMERS CAN CHOOSE TO SWITCH INTO AMBER (YELLOW COLOR) BASED ON THEIR PREFERENCE. PLEASE NOTE: once you PLUGGED & switched into Amber, the DRL & Parking lights color will remain (Yellow color) at all times.**



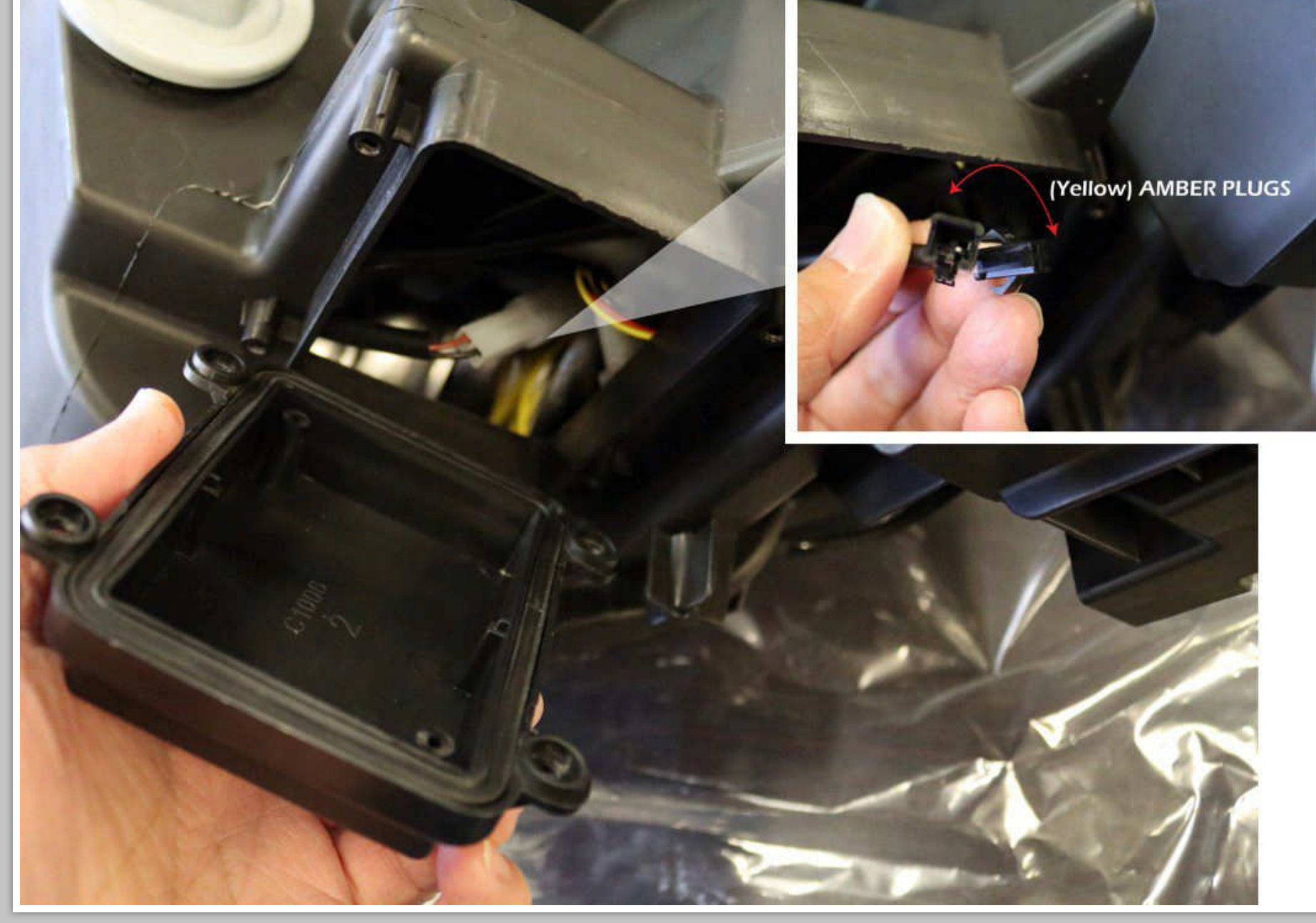
## AMBER SWITCH PLUGS LOCATION

From back of each ALPHAREX headlights, at the bottom you will find 4 screws over a square box.

Unscrew and open the box.

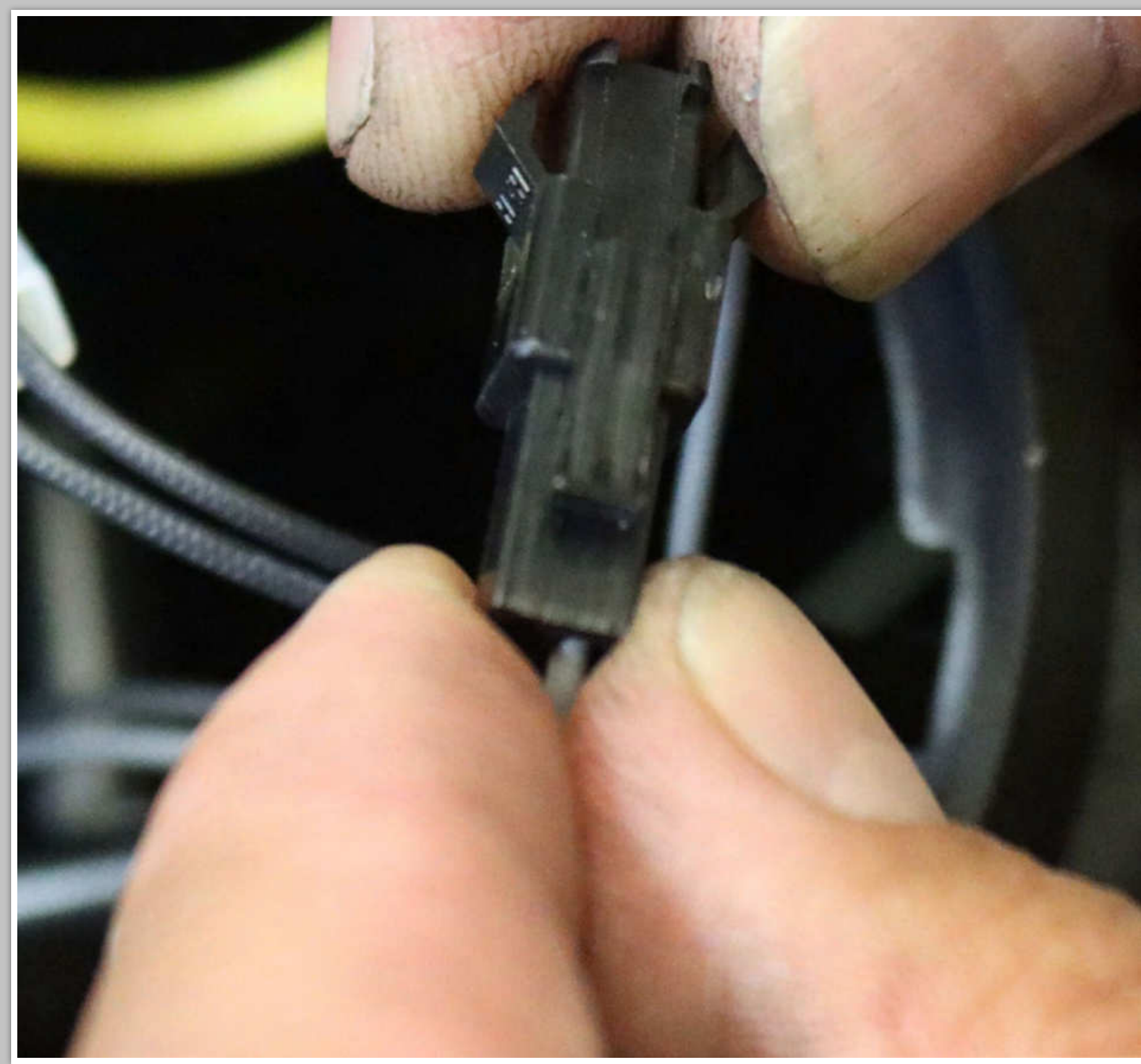
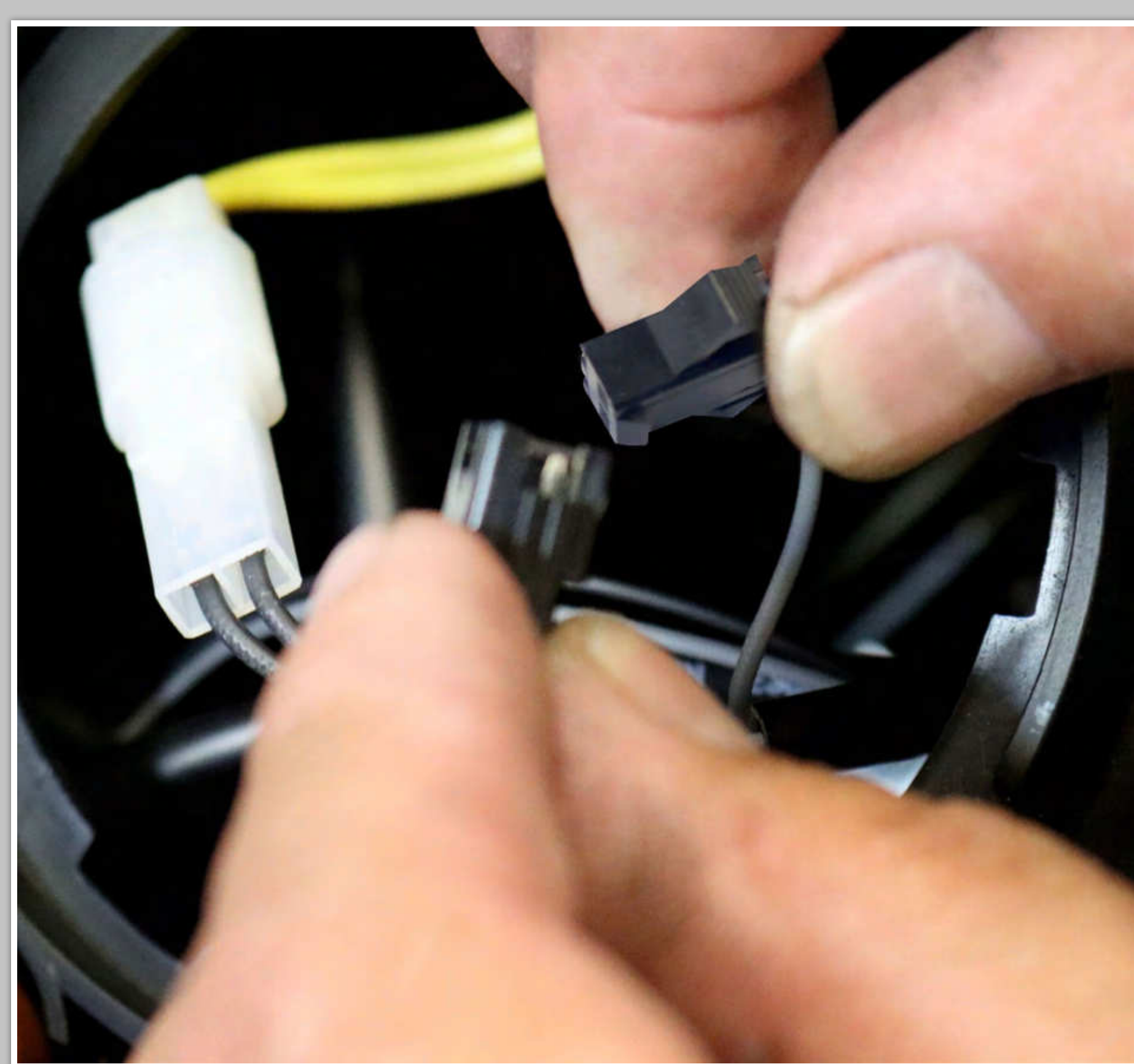


Inside of the headlight, you will find plug connectors for switching into Amber (Yellow color) DRL & Parking lights.



## CONNECT THE AMBER SWITCH PLUGS

Connect the amber DRL plugs directly for each of the headlights.



## COMPLETE SWITCHING INTO AMBER DRL & PARKING LIGHTS

After plug-in the connections, please install the headlights to the vehicle.

***Congratulations! You have switched into Amber (Yellow color) DRL & Parking lights.***

