

# How to Switch to Amber Daytime Running Light (DRL) for AlphaRex 21-24 Ford Bronco Headlights

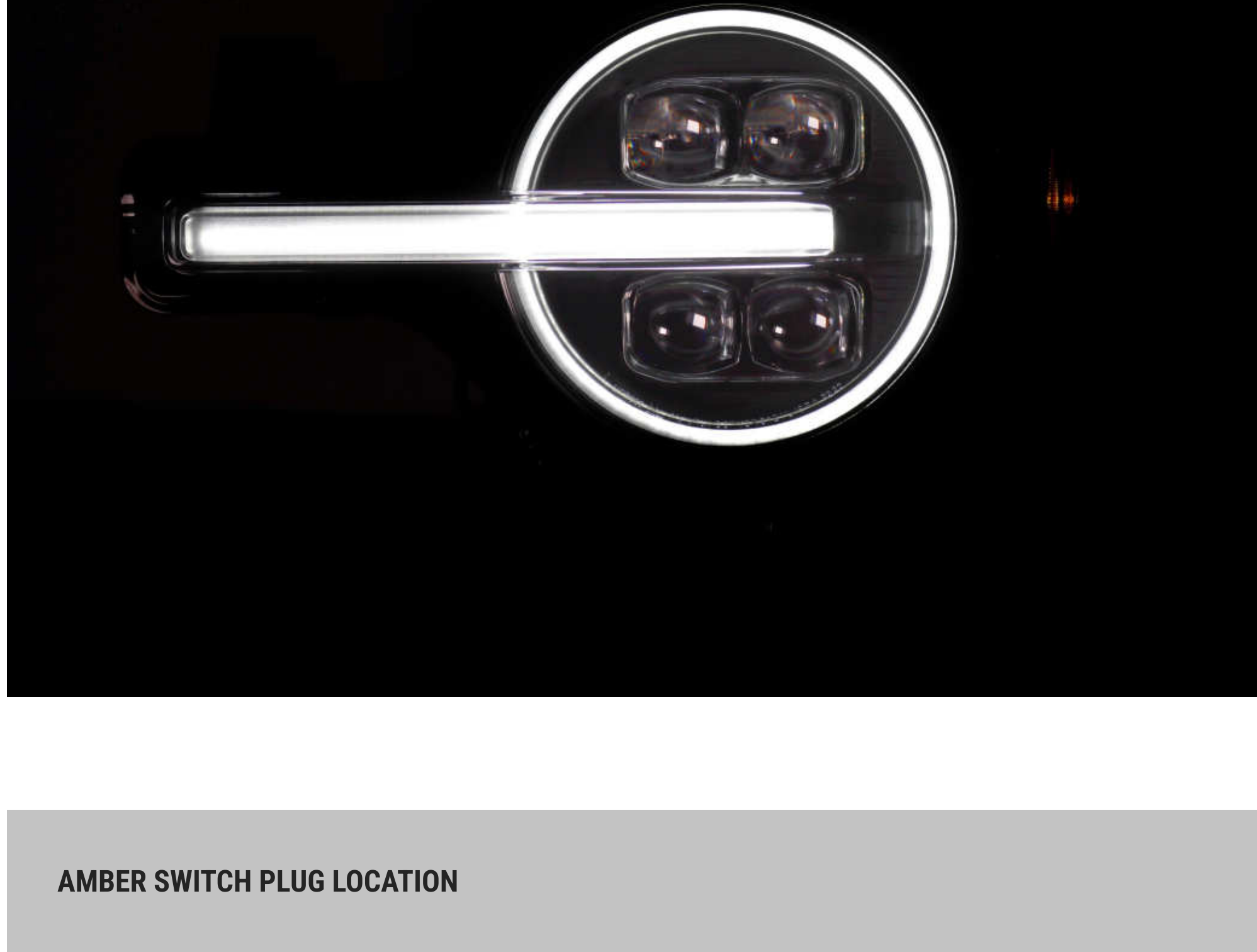
## Table of Contents

- AMBER SWITCH PLUG LOCATION
- AMBER OPTIONS
- COMPLETE THE SWITCH TO AMBER DRL & PARKING LIGHTS

*Disclaimer: This installation article is a tutorial guide. By reading this article, you agree it is for reference only and AlphaRex USA and its distributors make no guarantee on the finished results. Under no circumstances whatsoever shall AlphaRex USA nor its distributors be liable for any damage, misuse or personal injuries. If you do not fully understand the installation procedure, it is highly recommended that you seek help from professional mechanics to do the installation.*

From [The product models list](#), the NOVA-Series headlights for 2021-23 FORD BRONCO will come with optional switch plugs for Amber (Yellow color) DRL & Parking lights. By default the DRL & Parking lights color are White from factory. **CUSTOMERS CAN CHOOSE TO SWITCH TO AMBER (YELLOW COLOR) BASED ON THEIR PREFERENCE.**

PLEASE NOTE: Once you have plugged in and switch to Amber, the DRL & Parking lights color will remain Amber (Yellow color).

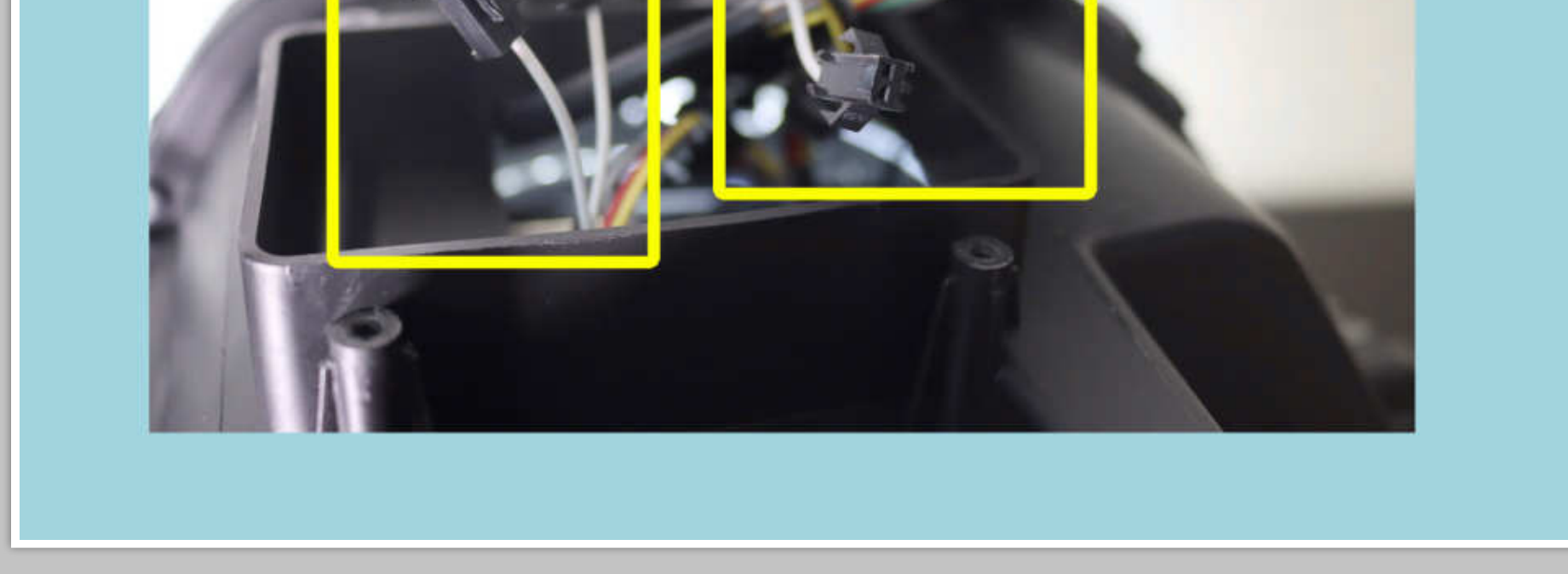


## AMBER SWITCH PLUG LOCATION

From back of each ALPHAREX headlights, at the bottom you will find 4 screws over a rectangular cover. Unscrew and open the cover.

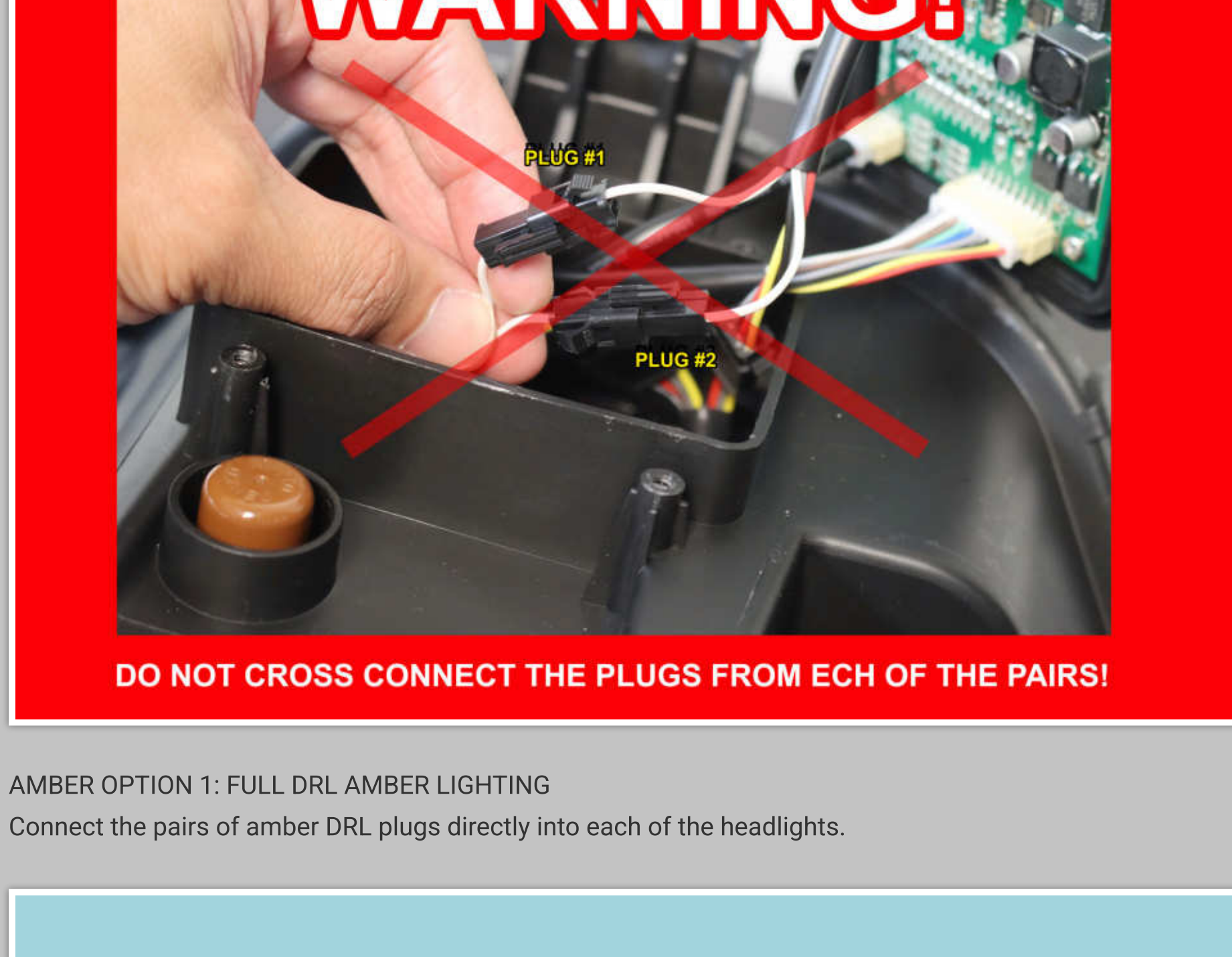


Inside of the headlight, you will find 2 pairs of plug connectors (PLUG #1 & PLUG #2). Depending your preference, the following steps we will guide you how to switch AMBER OPTIONS.

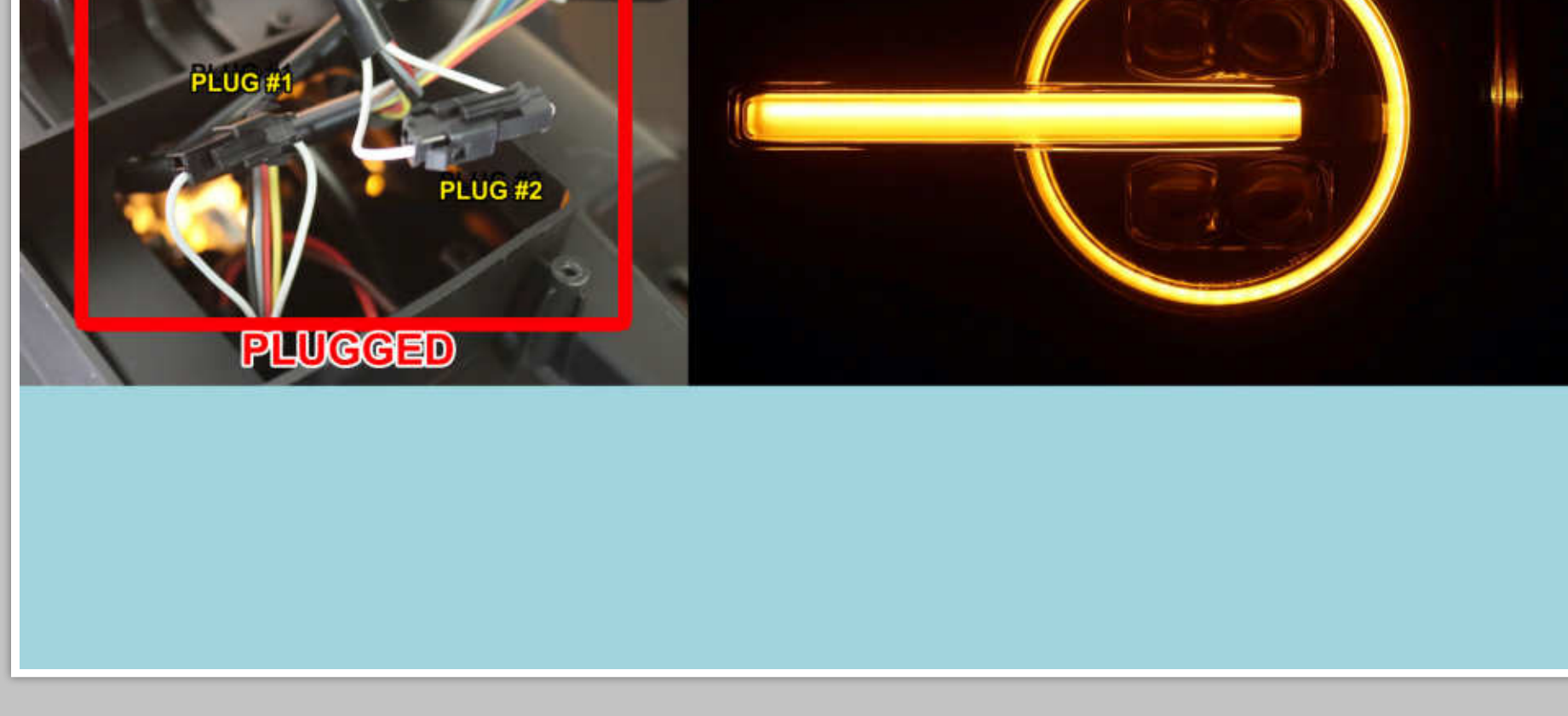


## AMBER OPTIONS

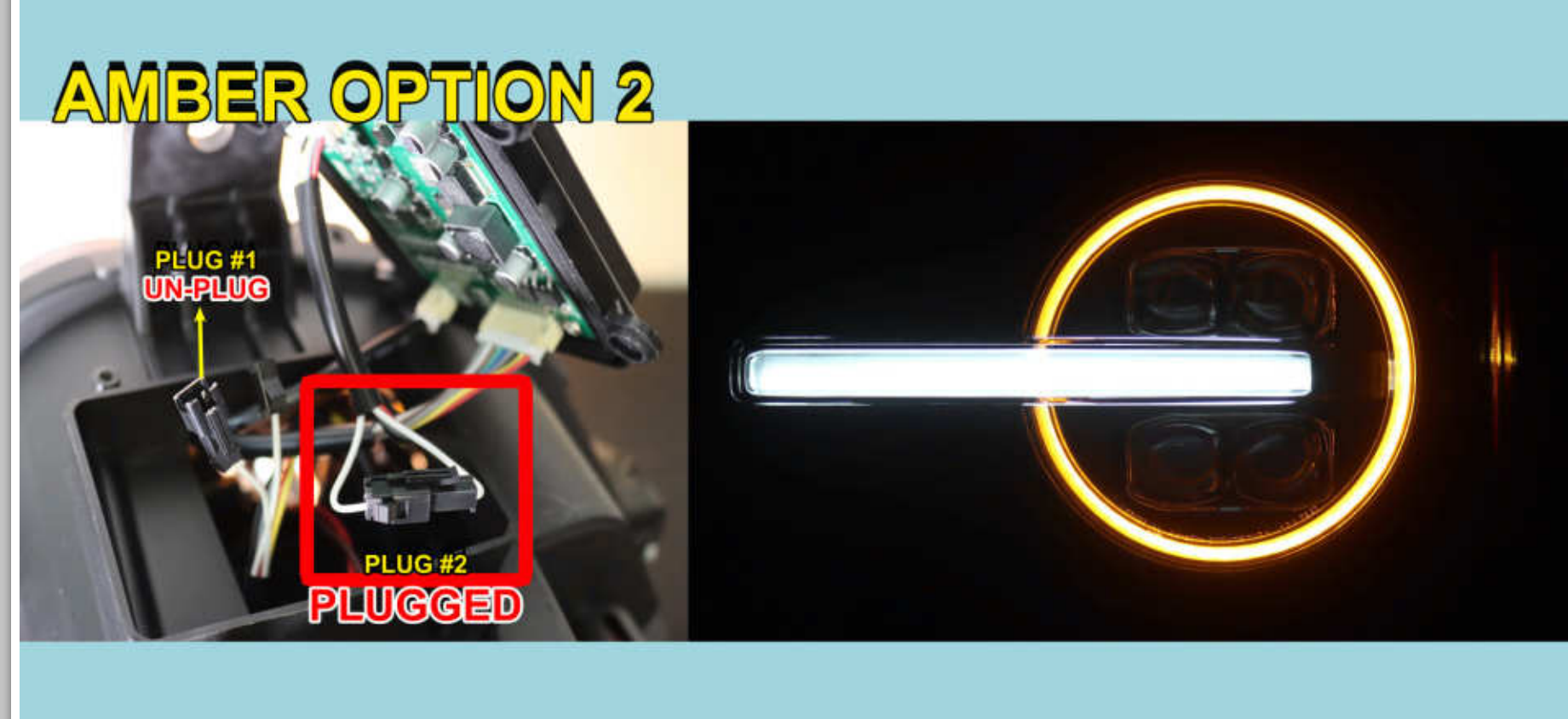
NOTE: It is important not to cross connect the plugs from each of the pairs. **DO NOT USE DIELECTRIC GREASE!**



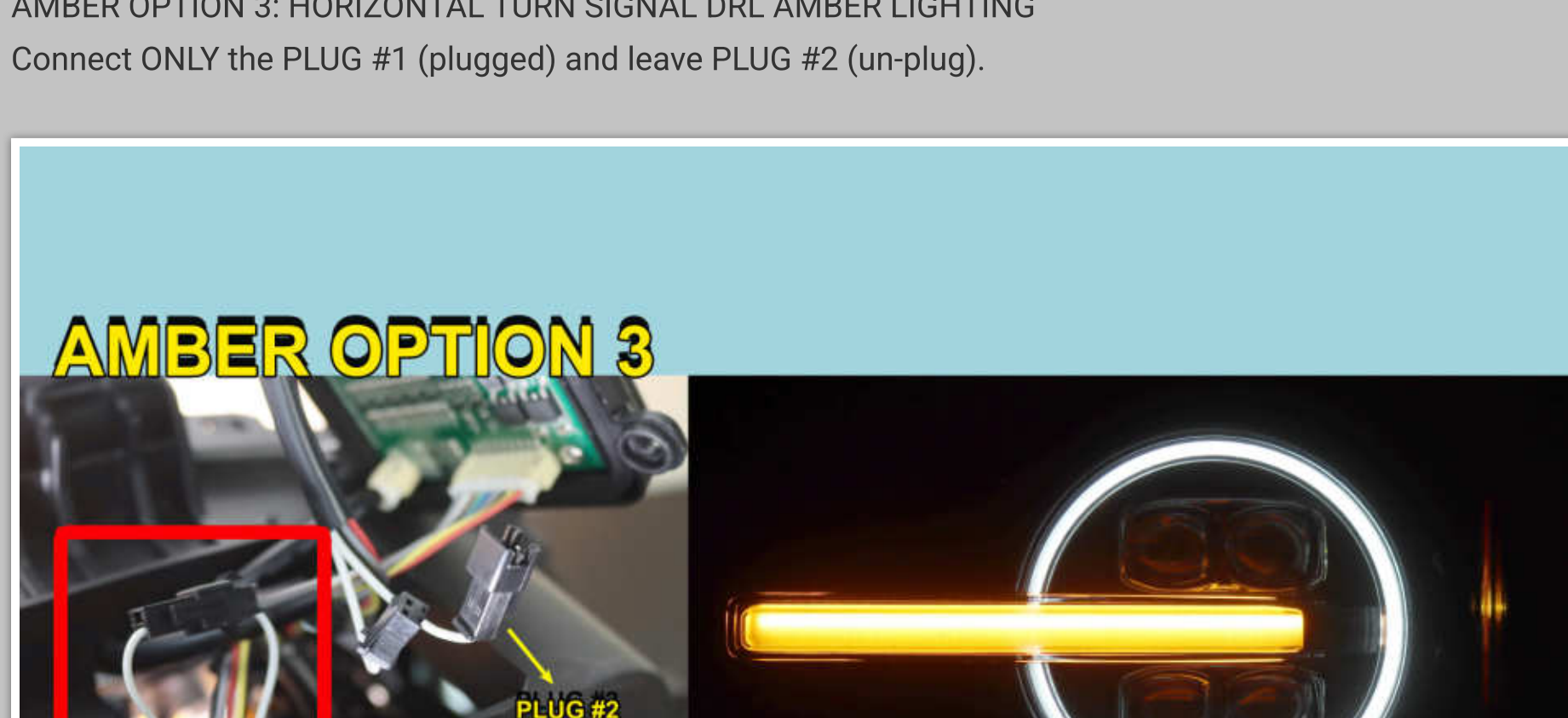
AMBER OPTION 1: FULL DRL AMBER LIGHTING  
Connect the pairs of amber DRL plugs directly into each of the headlights.



AMBER OPTION 2: DRL HALO AMBER LIGHTING  
Connect ONLY the PLUG #2 (plugged) and leave PLUG #1 (un-plug).



AMBER OPTION 3: HORIZONTAL TURN SIGNAL DRL AMBER LIGHTING  
Connect ONLY the PLUG #1 (plugged) and leave PLUG #2 (un-plug).



## COMPLETE THE SWITCH TO AMBER DRL & PARKING LIGHTS

After plugging in the connections, please install the headlights back on to the vehicle. *Congratulations! You have switched to Amber (Yellow color) DRL & Parking lights.*

