



Installation Guide for 2008-10 Ford Super Duty | Excursion Headlights

ALPHAREX specializes in designing and producing superior and uniquely stylish aftermarket automotive performance lighting with unrivalled innovative technology. This installation guide takes you through the step-by-step process of installing your new **ALPHAREX HEADLIGHTS** for your 2008-10 Ford Super Duty | Excursion

DO NOT USE DIELECTRIC GREASE!



Table of Contents



PART I REMOVE HEADLIGHTS

- **INSTALLATION TOOLS**
- **STEP 1.** Disconnecting the negative battery terminal
- **STEP 2.** Remove headlight bolts

PART II INSTALL HEADLIGHTS

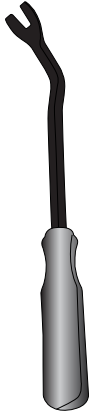
- **STEP 1.** Route the DRL harness
- **STEP 2.** Tap the fuse
- **STEP 3.** Plug and install headlights
- **STEP 4.** Test the headlight functions
- **STEP 5.** Adjust headlight level
- **STEP 6.** Complete installation

Disclaimer: This installation article is a tutorial guide. By reading this article, you agree it is for reference only and AlphaRex USA and its distributors make no guarantee on the finished results. Under no circumstances whatsoever shall AlphaRex USA nor its distributors be liable for any damage, misuse or personal injuries. If you do not fully understand the installation procedure, it is highly recommended that you seek help from professional mechanics to do the installation.

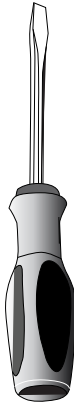
PART I REMOVE HEADLIGHTS

INSTALLATION TOOLS

PREPARE THESE TOOLS FOR INSTALLATION



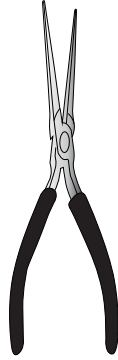
Metal Panel Popper



Flat Screwdriver



Phillips Screwdriver



Pliers



1/4 Ratchet



1/4 Extension

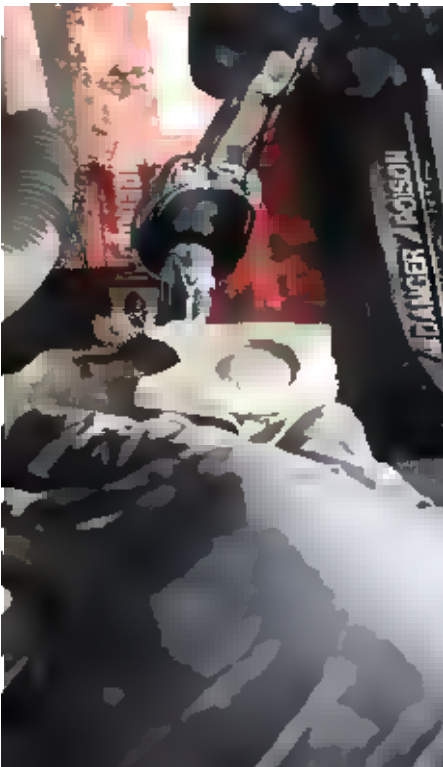
7mm



Socket

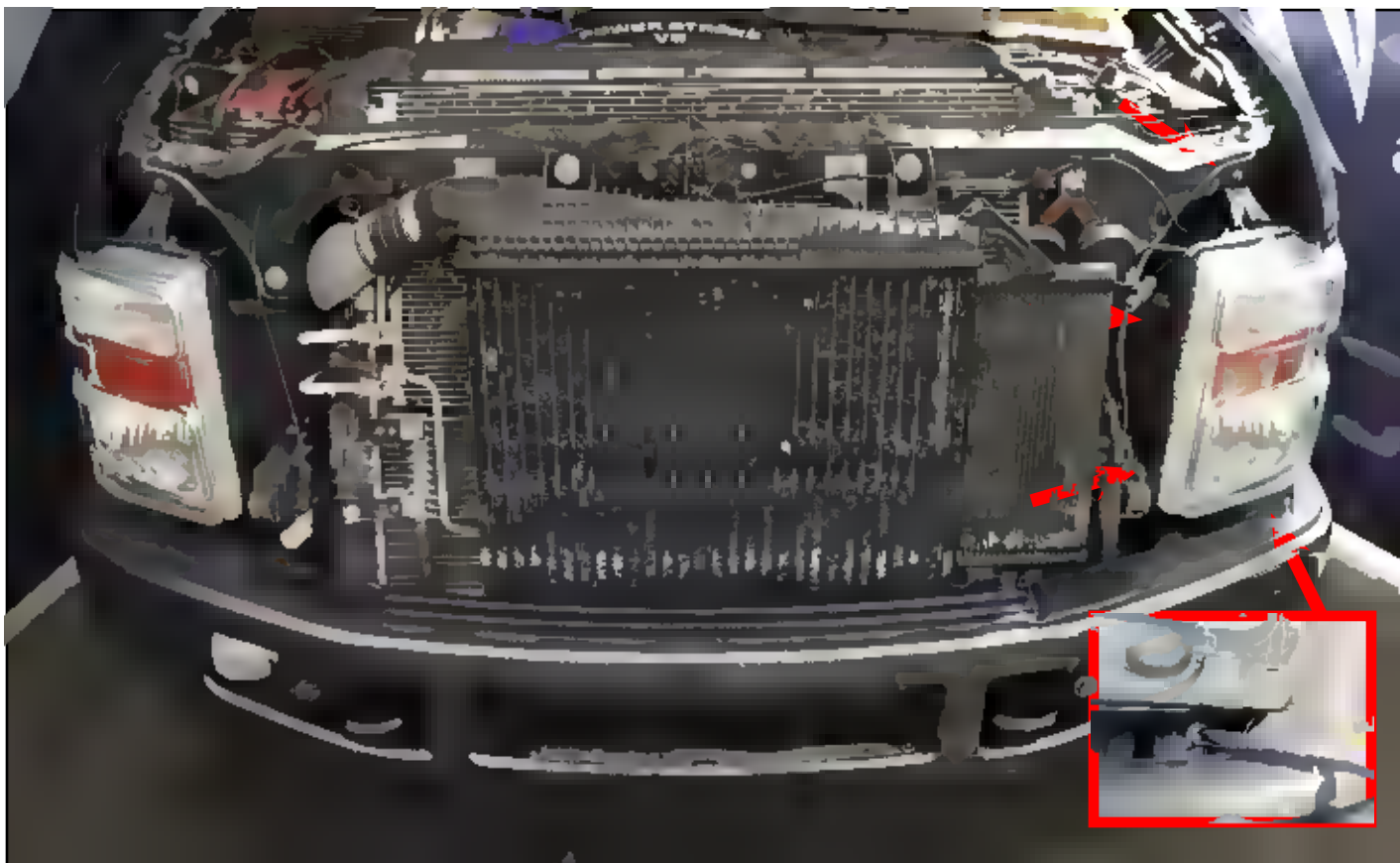
STEP 1. DISCONNECTING THE NEGATIVE BATTERY TERMINAL

Whenever working on your vehicle, always start by disconnecting the negative battery terminal.



STEP 2. REMOVE HEADLIGHT BOLTS

To begin, open the hood and start by removing the four 7mm bolts from each headlight: one on the top, two on the side, and one at the bottom.



After removing the bolts, carefully pull the headlight forward and unplug the light sockets to facilitate headlight removal. Repeat the same steps for the other side.



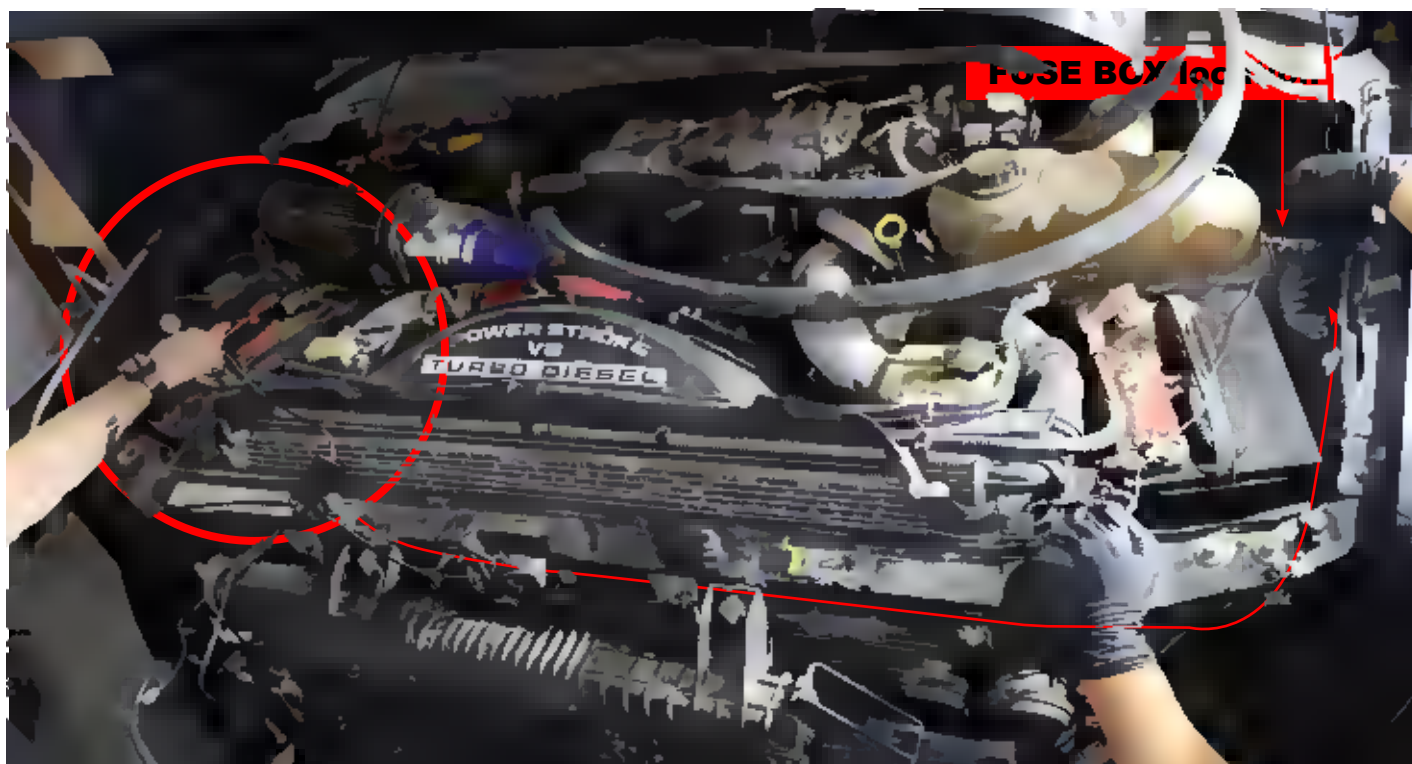


PART II INSTALL HEADLIGHTS

STEP 1. ROUTE THE DRL HARNESS



Guide the daytime running lights harness toward the two headlights, starting at the passenger side, which is closest to the truck's battery.





STEP 2. TAP THE FUSE

Secure the gray wire from the daytime running lights harness to the fuse tap.



Connect to any of the highlighted fuses in the fuse box



Attach the red wire to the positive terminal of the battery and the black wire to the negative terminal for proper electrical connection.

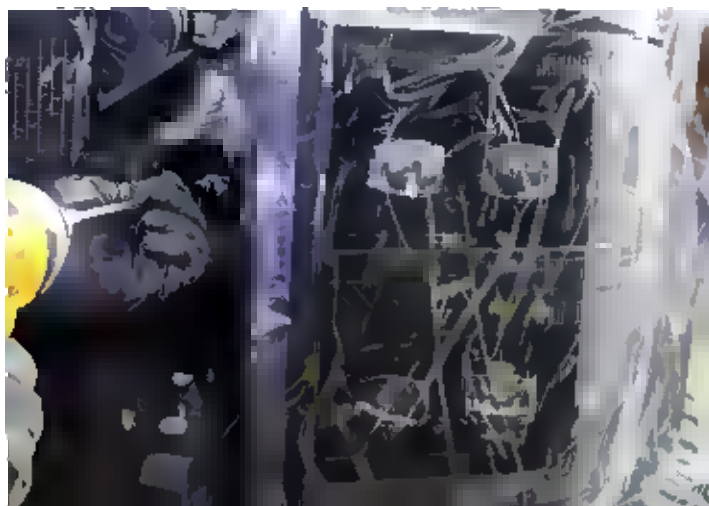


STEP 3. PLUG AND INSTALL HEADLIGHTS

Connect the low/high beam, daytime running lights, and turn signal wiring harnesses to the new ALPHAREX headlight to establish the necessary electrical connections. **DO NOT USE DIELECTRIC GREASE!**



Complete the installation process by securely attaching the headlight to the truck. Repeat the previous steps for the opposite side headlight installation to ensure consistency on both sides.



STEP 4. TEST THE HEADLIGHT FUNCTIONS

Test the functions of your ALPHAREX headlights to ensure everything works properly.

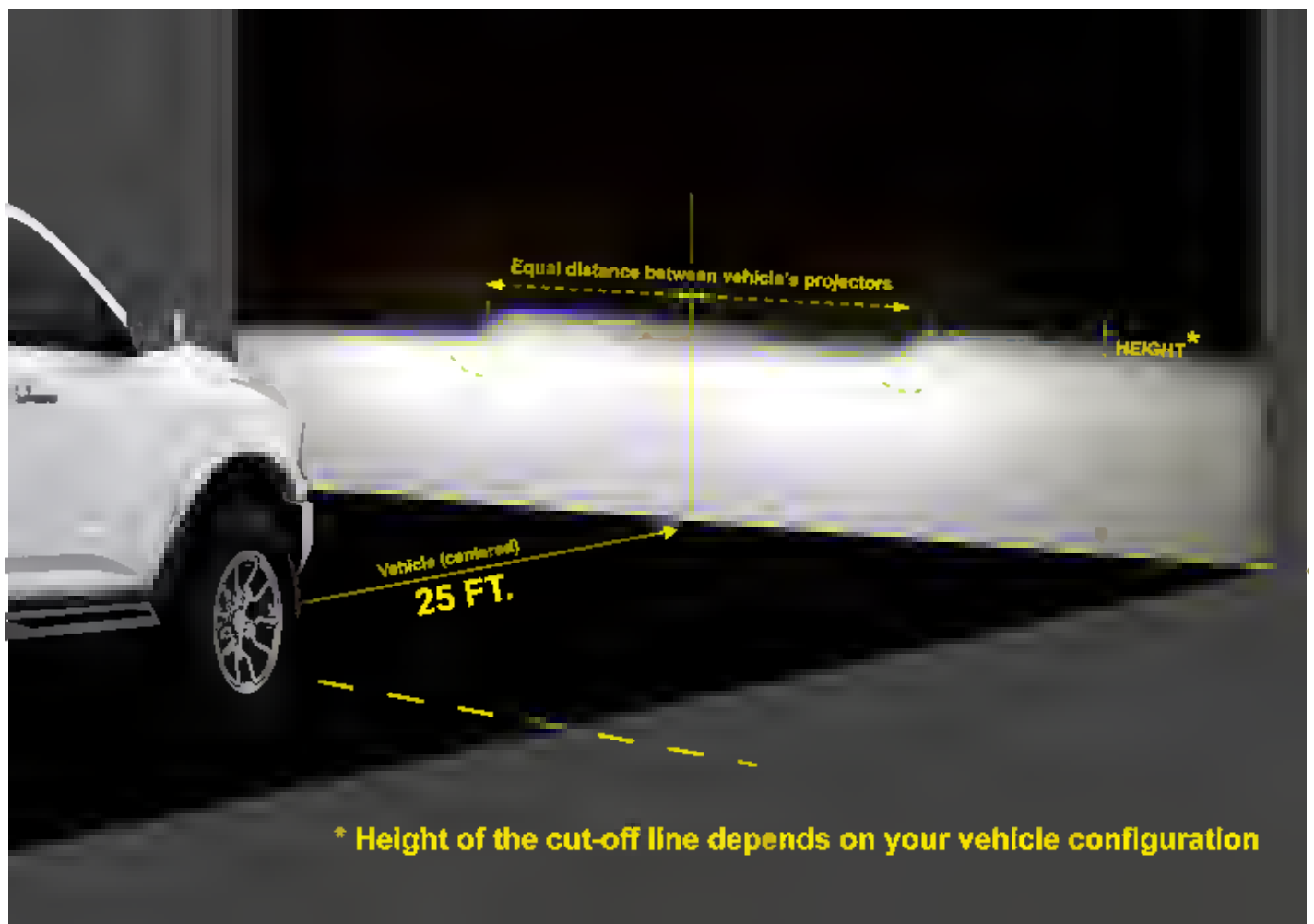
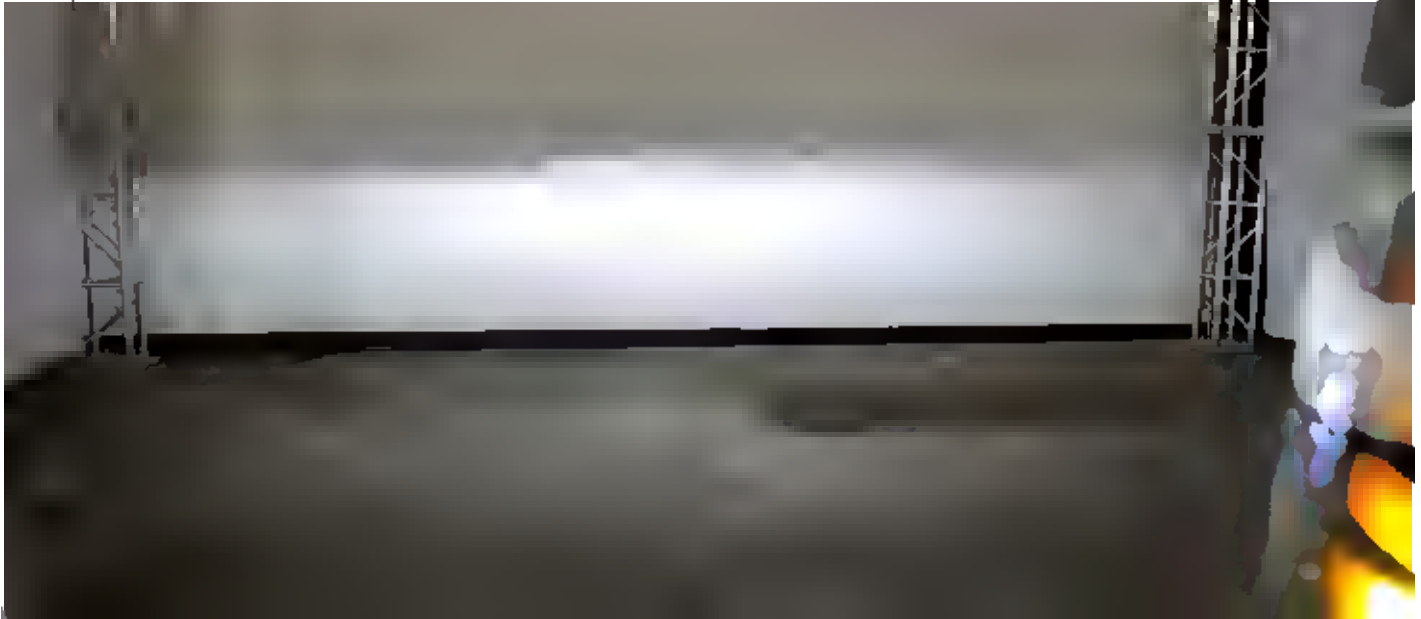


STEP 5. ADJUST HEADLIGHT LEVEL

Once everything has been tested, aim your ALPHAREX headlights by parking 25ft from a wall and level the headlight evenly.

Turn clockwise: to lower the light

Turn counterclockwise: to raise the light



STEP 6. COMPLETE INSTALLATION

Congratulations! You have completed the installation for ALPHAREX **08-10 Ford Super Duty | Excursion Headlights**.

