



Installation Guide for 2004-08 Ford F150 | 2006-08 Lincoln Mark LT Headlights

ALPHAREX specializes in designing and producing superior and uniquely stylish aftermarket automotive performance lighting with unrivalled innovative technology. This installation guide takes you through the step-by-step process of installing your new **ALPHAREX HEADLIGHTS** for your 2004-08 Ford F150 | 2006-08 Lincoln Mark LT

DO NOT USE DIELECTRIC GREASE!



Table of Contents



PART I REMOVE HEADLIGHTS

- **INSTALLATION TOOLS**
- **STEP 1.** Disconnecting the negative battery terminal
- **STEP 2.** Remove the cover
- **STEP 3.** Remove the headlight bolts
- **STEP 4.** Remove the headlights

PART II INSTALL HEADLIGHTS

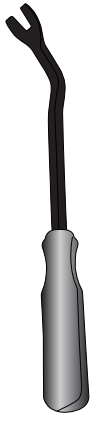
- **STEP 1.** Route the DRL harness
- **STEP 2.** Tap the fuse
- **STEP 3.** Plug and install headlights
- **STEP 4.** Test the headlight functions
- **STEP 5.** Adjust headlight level
- **STEP 6.** Complete installation

Disclaimer: This installation article is a tutorial guide. By reading this article, you agree it is for reference only and AlphaRex USA and its distributors make no guarantee on the finished results. Under no circumstances whatsoever shall AlphaRex USA nor its distributors be liable for any damage, misuse or personal injuries. If you do not fully understand the installation procedure, it is highly recommended that you seek help from professional mechanics to do the installation.

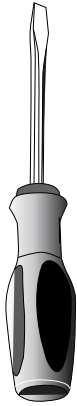
PART I REMOVE HEADLIGHTS

INSTALLATION TOOLS

PREPARE THESE TOOLS FOR INSTALLATION



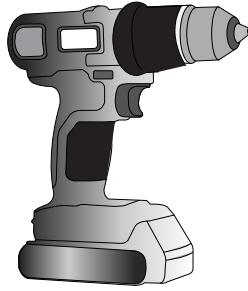
Metal
Panel
Popper



Flat
Screwdriver



Phillips
Screwdriver



Power Tool



1/4 Ratchet



1/4 Extension

10mm
8mm



Socket

NOTE: Whenever using a power tool, please make sure do not overtighten the screws.

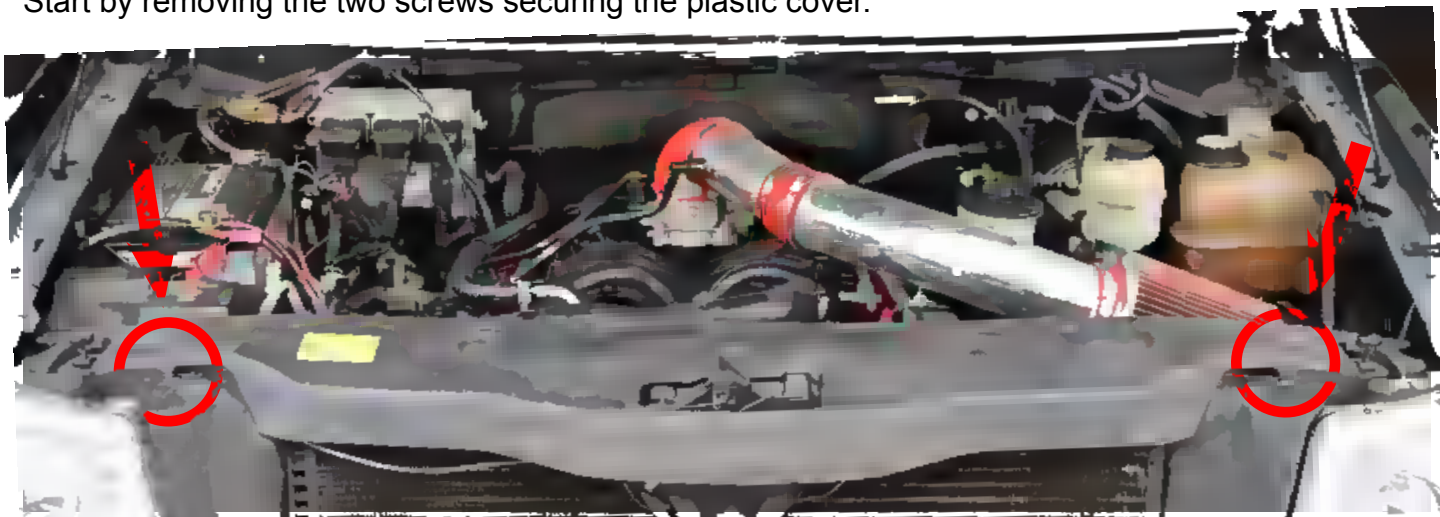
STEP 1. DISCONNECTING THE NEGATIVE BATTERY TERMINAL

Whenever working on your vehicle, always start by disconnecting the negative battery terminal.



STEP 2. REMOVE THE COVER

Start by removing the two screws securing the plastic cover.



Take out the screws and keep them aside for future reinstallation.



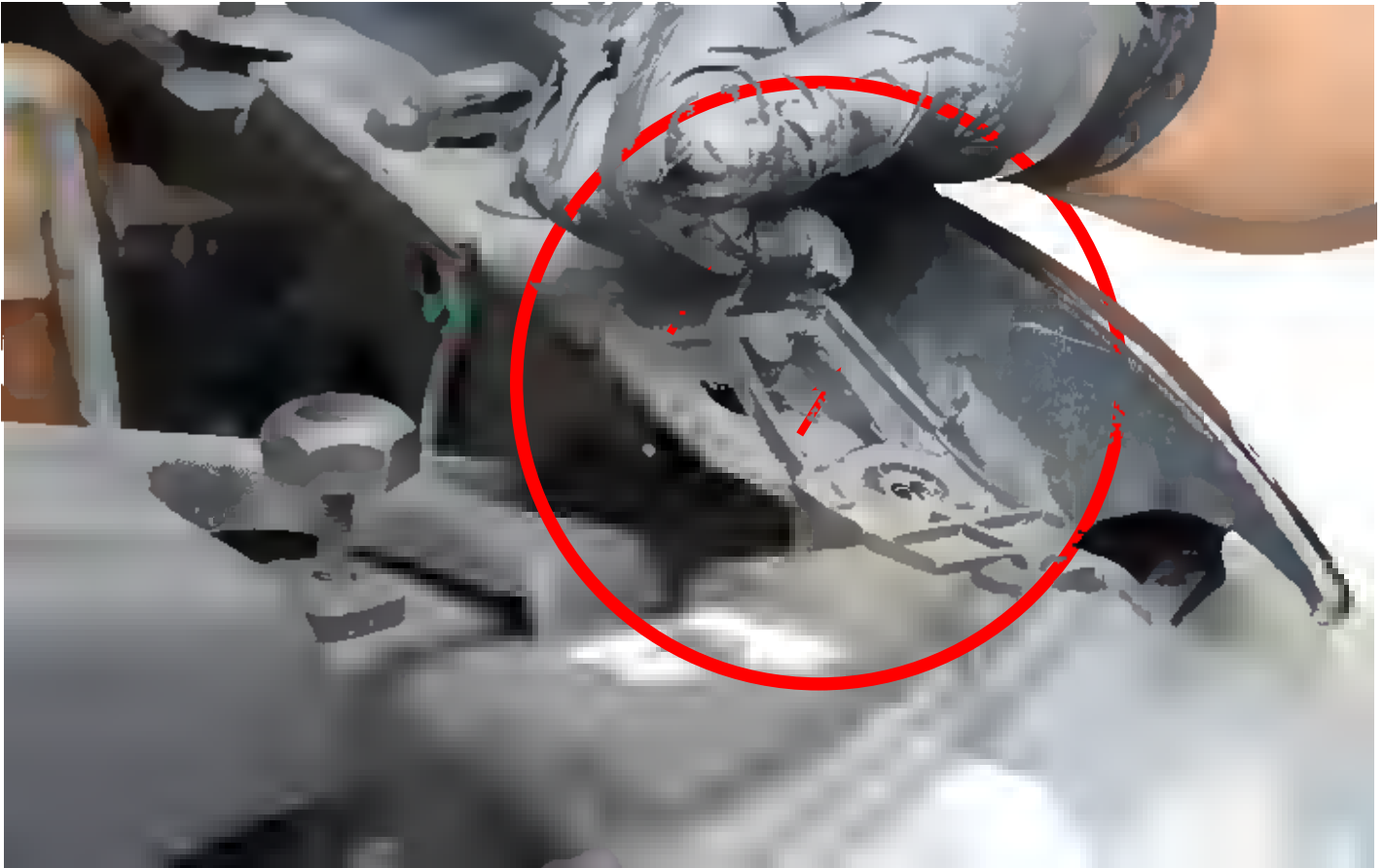
STEP 3. REMOVE THE HEADLIGHT BOLTS

To remove the headlight, you'll need to extract three 10mm bolts: one on the top and two on the side of the headlight. Repeat the same steps for the other side.

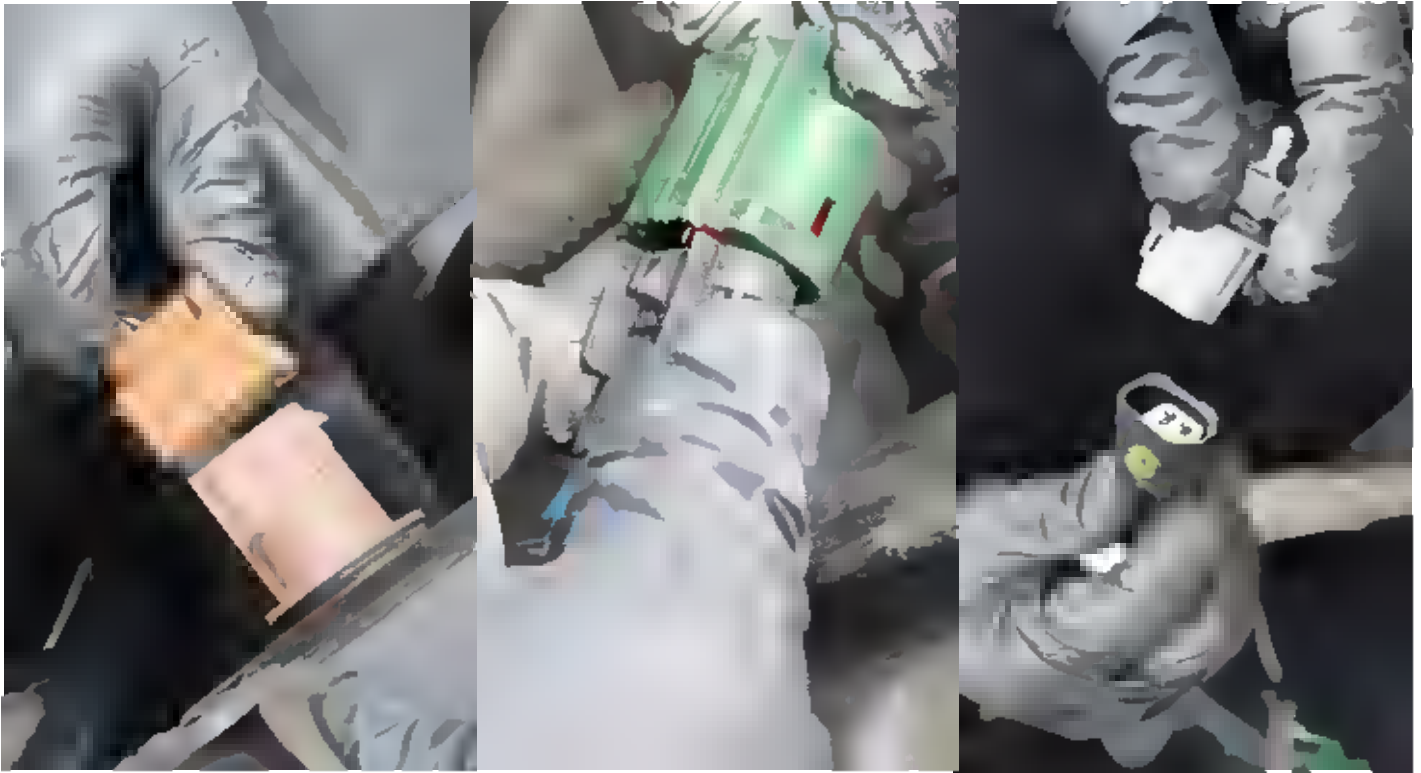


STEP 4. REMOVE THE HEADLIGHTS

Lift the plastic tab and pull the headlight assembly outward from your truck. Repeat the same step for the other side.



Disconnect the sockets and take out the parking light bulb from each side of the headlight.



Take out both headlights, and now you're ready for the installation process.

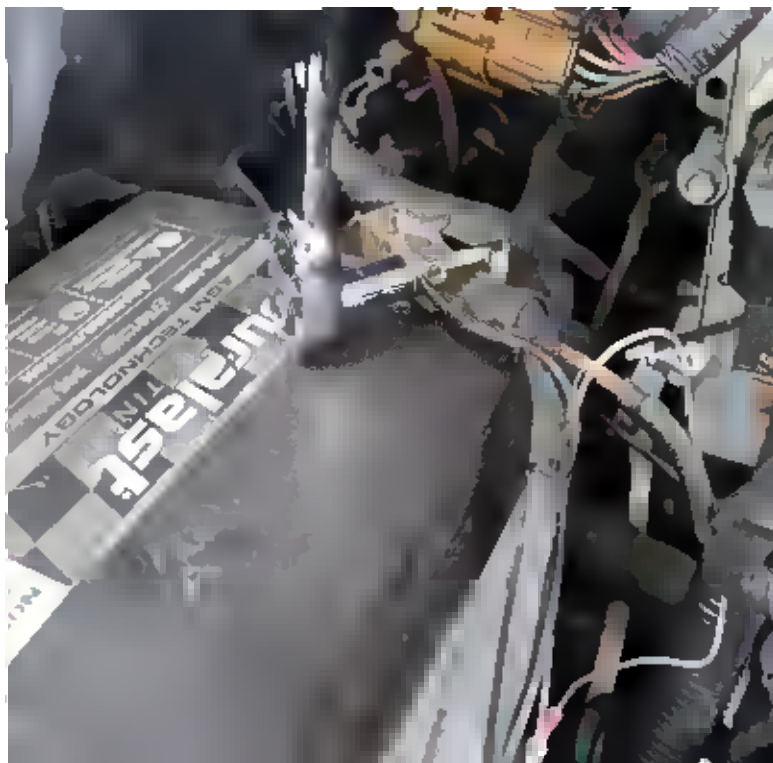


PART II INSTALL HEADLIGHTS

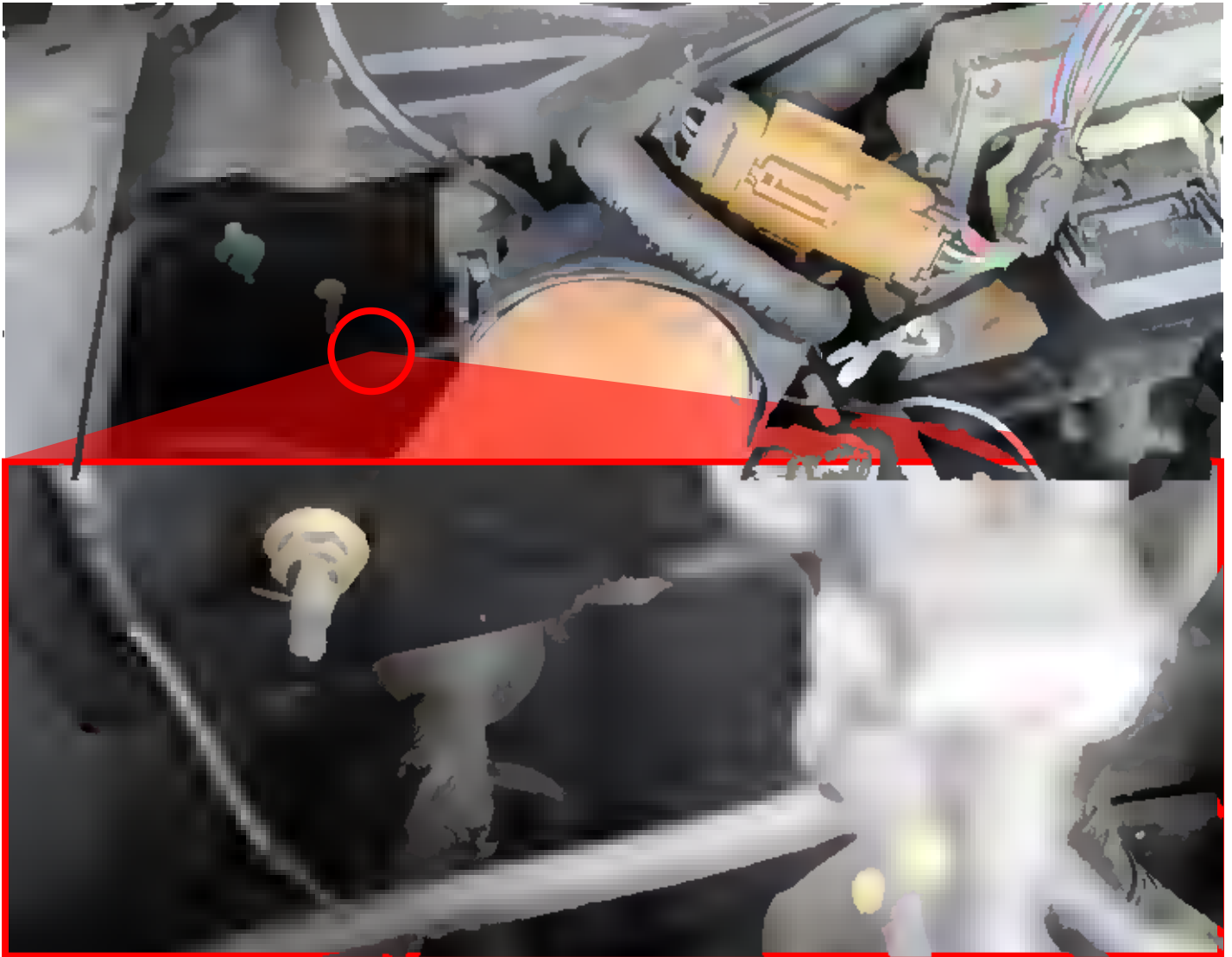
STEP 1. ROUTE THE DRL HARNESS



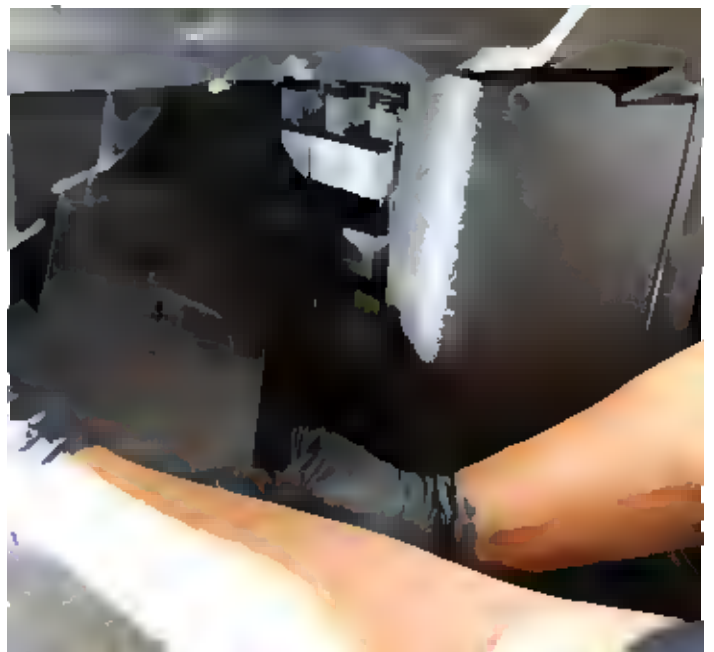
Now that both headlights are disconnected, proceed with installing the DRL (Daytime Running Lights) harness. Connect the red wire to the positive terminal of the battery and the black wire to the negative terminal.



To tap into the fuse, route the DRL (Daytime Running Lights) grey wire through the firewall and direct it to the passenger side fuse box, which is situated at the kick panel.

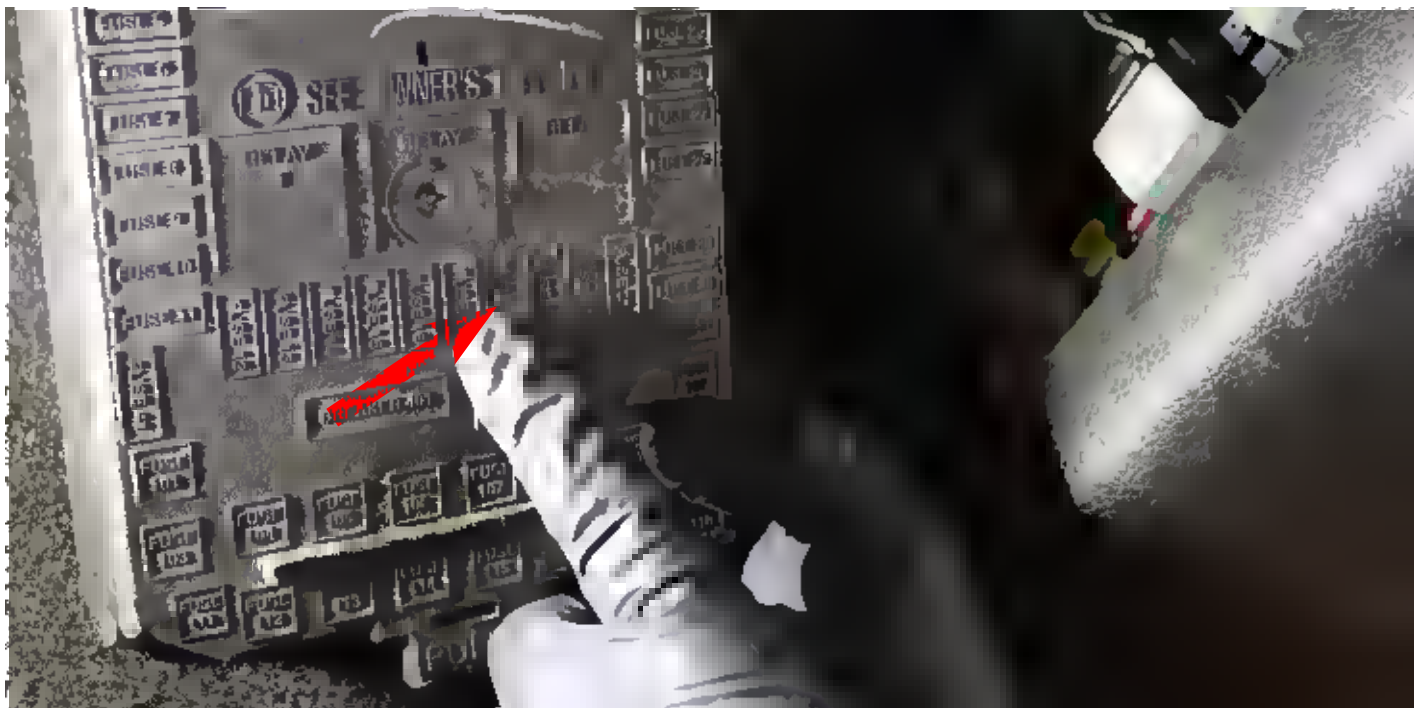


Fuse box is located under the passenger side kick panel



STEP 2. TAP THE FUSE

For the DRL (Daytime Running Lights) to operate during the day, you must connect the grey wire to fuse #18.



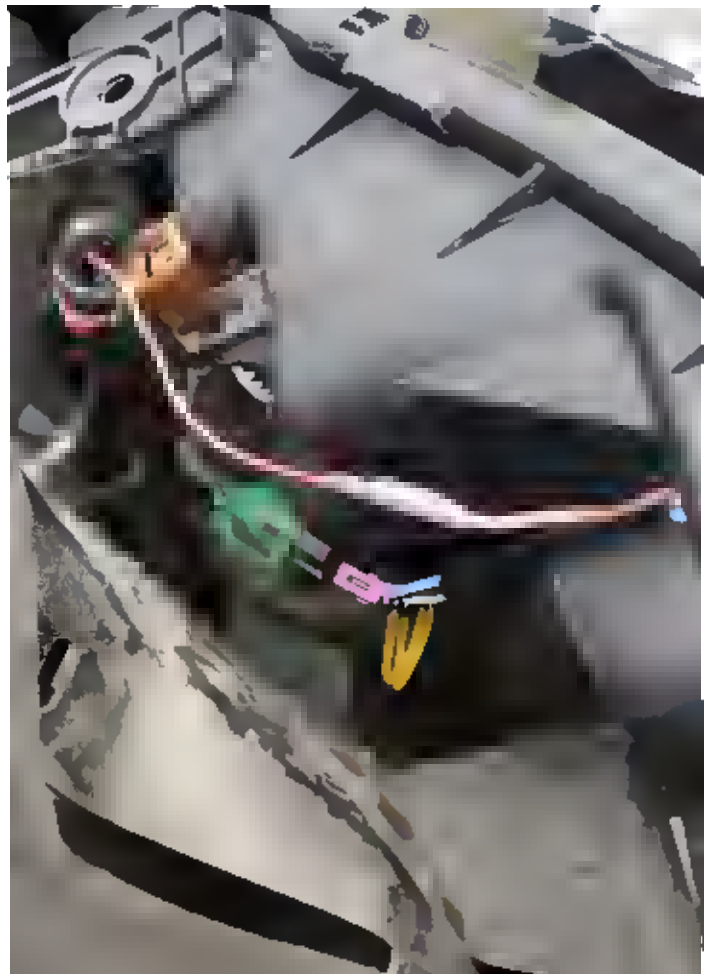
Proceed by guiding the DRL harness to the other side of the headlight and secure it in a safe area using zip ties.



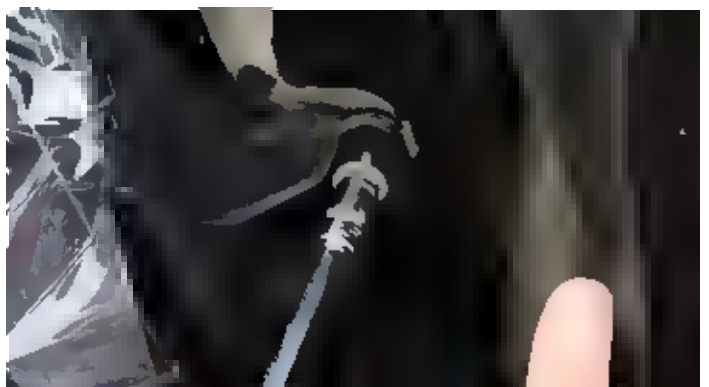
STEP 3. PLUG AND INSTALL HEADLIGHTS

Connect the DRL wire and plug in the light sockets to the new ALPHAREX headlights.

DO NOT USE DIELECTRIC GREASE!



Fasten all the headlight bolts securely and reverse the removal process to finish the installation. Repeat the same process for the other side of the headlight.



STEP 4. TEST THE HEADLIGHT FUNCTIONS

Test the functions of your ALPHAREX headlights to ensure everything works properly.

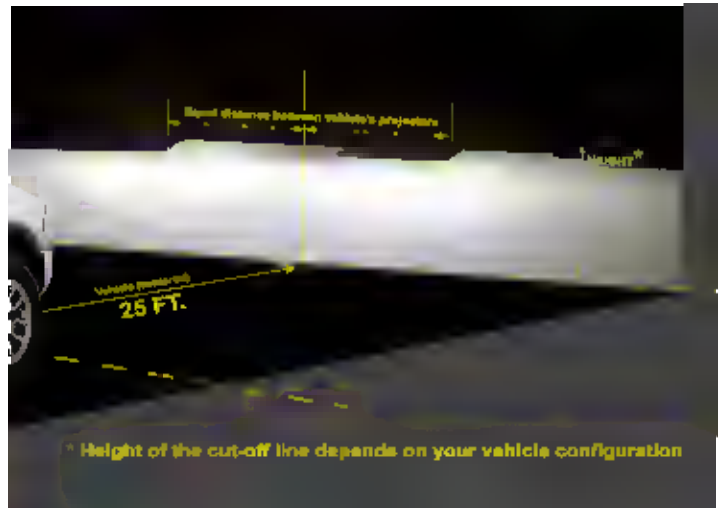


STEP 5. ADJUST HEADLIGHT LEVEL

Once everything has been tested, aim your ALPHAREX headlights by parking 25ft from a wall and level the headlight evenly.

Turn clockwise: to lower the light

Turn counterclockwise: to raise the light



STEP 6. COMPLETE INSTALLATION

Congratulations! You have completed the installation for ALPHAREX **04-08 Ford F150** | **06-08 Lincoln Mark LT HEADLIGHTS.**

