



## Installation Guide for 2021-23 FORD F150 | RAPTOR Headlights

ALPHAREX specializes in designing and producing superior and uniquely stylish aftermarket automotive performance lighting with unrivalled innovative technology. This installation guide takes you through the step-by-step process of installing your new **ALPHAREX HEADLIGHTS** for your 2021-23 Ford F150 | RAPTOR

**DO NOT USE DIELECTRIC GREASE!**



### Table of Contents



#### PART I REMOVE HEADLIGHTS

- **INSTALLATION TOOLS**
- **STEP 1.** Disconnecting the negative battery terminal
- **STEP 2.** Remove the radiator shroud
- **STEP 3.** Remove bumper trim piece
- **STEP 4.** Unplug two connections
- **STEP 5.** Remove the grille
- **STEP 6.** Remove headlight bolts
- **STEP 7.** Unplug headlight wiring connection
- **STEP 8.** Route the DRL harness
- **STEP 9.** Connect DRL harness to the fuse tap

#### PART II INSTALL HEADLIGHTS

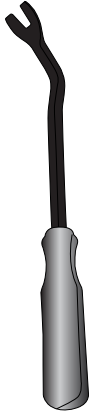
- **STEP 1.** Install ALPHAREX headlights
- **STEP 2.** Test the headlight functions
- **STEP 3.** Adjust headlight level
- **STEP 4.** Complete installation

*Disclaimer: This installation article is a tutorial guide. By reading this article, you agree it is for reference only and AlphaRex USA and its distributors make no guarantee on the finished results. Under no circumstances whatsoever shall AlphaRex USA nor its distributors be liable for any damage, misuse or personal injuries. If you do not fully understand the installation procedure, it is highly recommended that you seek help from professional mechanics to do the installation.*

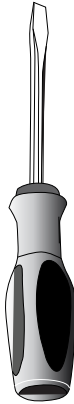
# PART I REMOVE HEADLIGHTS

## INSTALLATION TOOLS

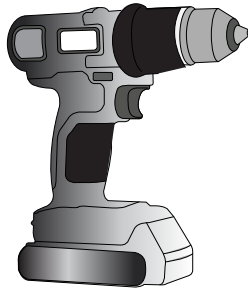
PREPARE THESE TOOLS FOR INSTALLATION



Metal Panel Popper



Flat Screwdriver



Power Tool



1/4 Ratchet



1/4 Extension

10mm  
8mm  
7mm

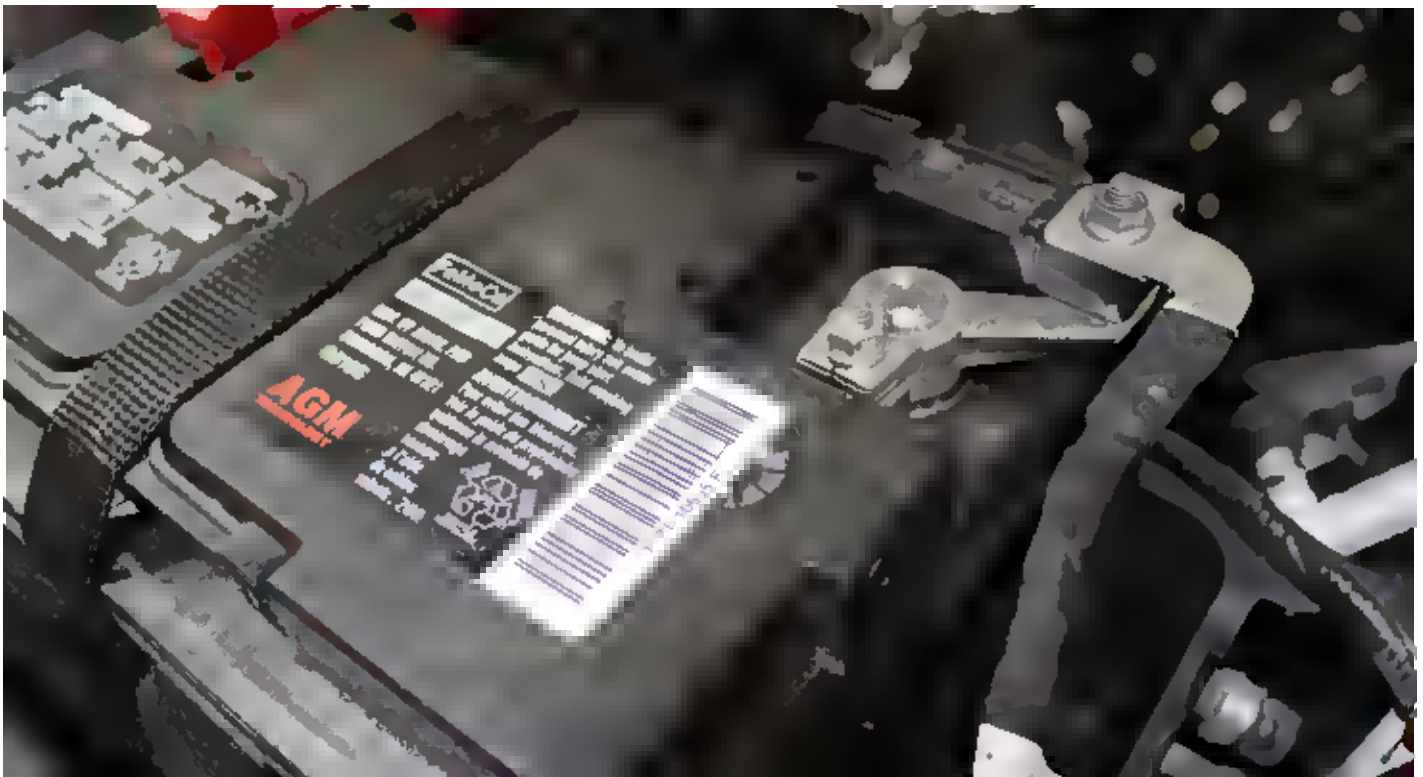


Socket

**NOTE:** Whenever using a power tool, please make sure do not overtighten the screws.

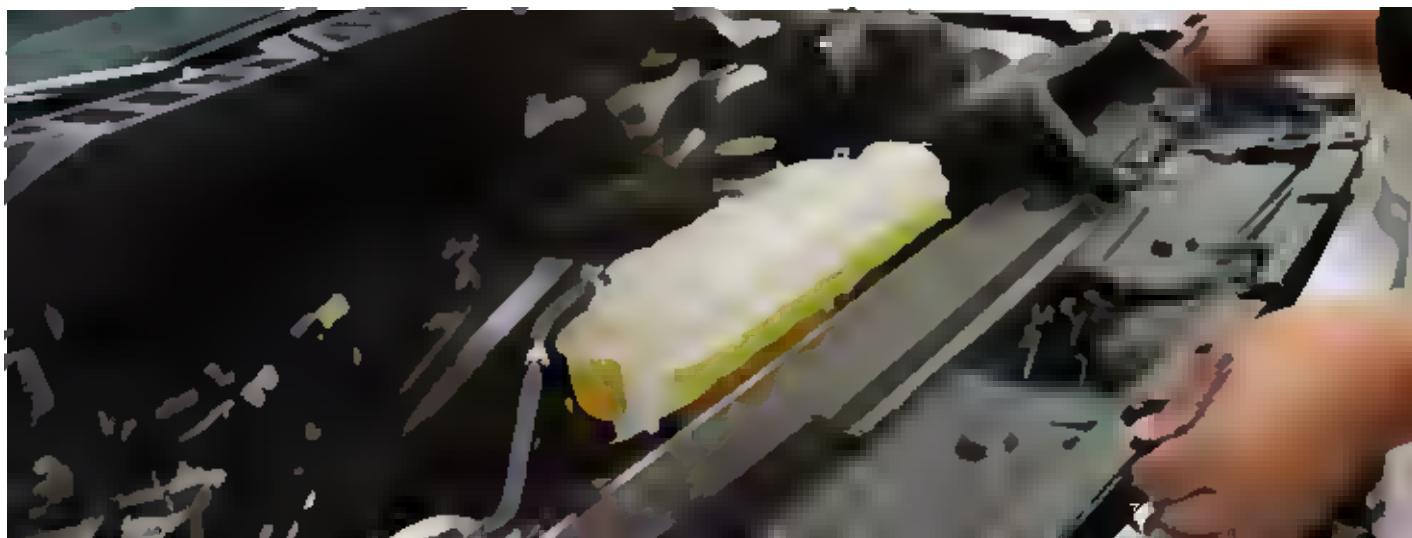
## STEP 1. DISCONNECTING THE NEGATIVE BATTERY TERMINAL

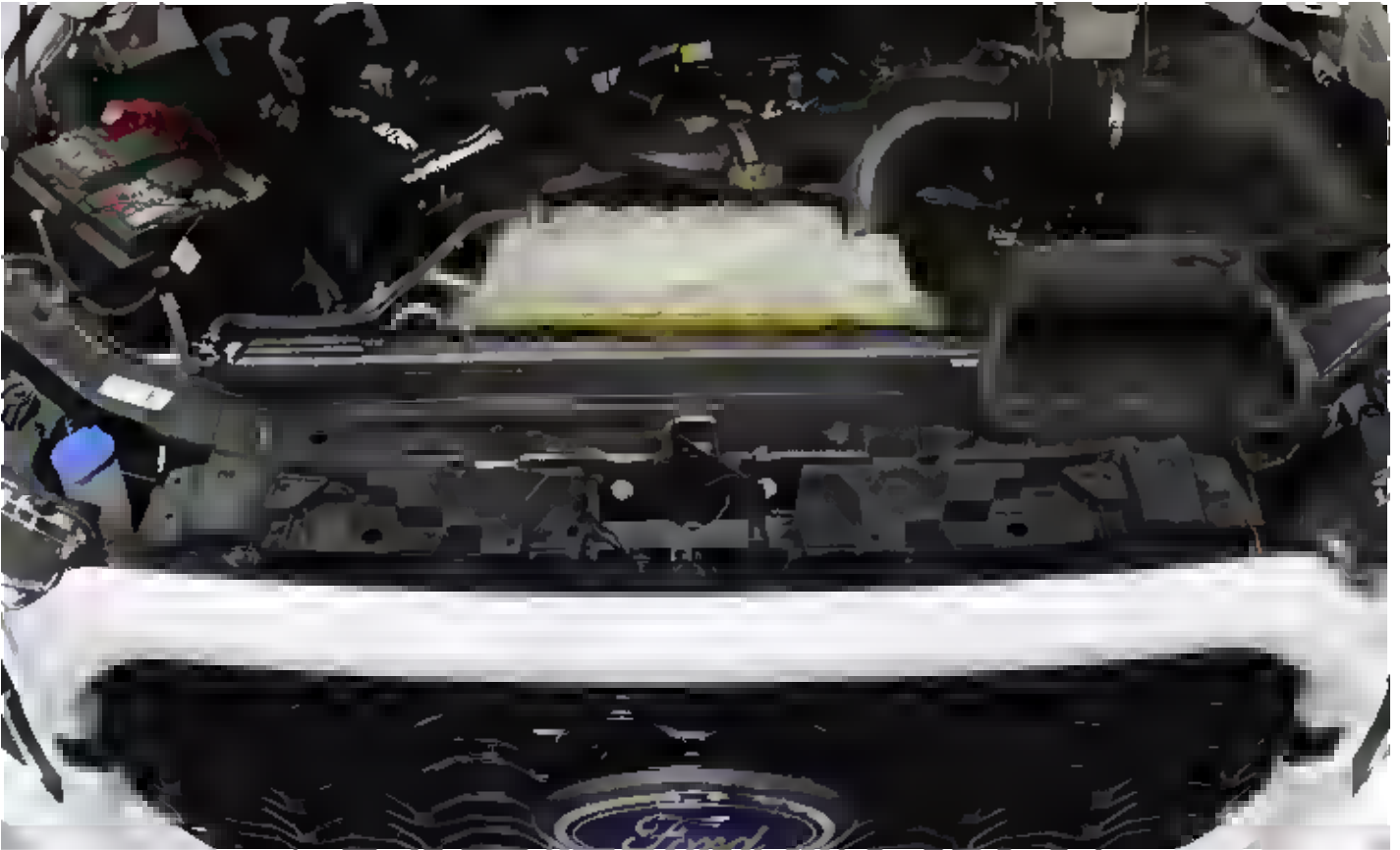
Whenever working on your vehicle, always start by disconnecting the negative battery terminal.



## STEP 2. REMOVE THE RADIATOR SHROUD

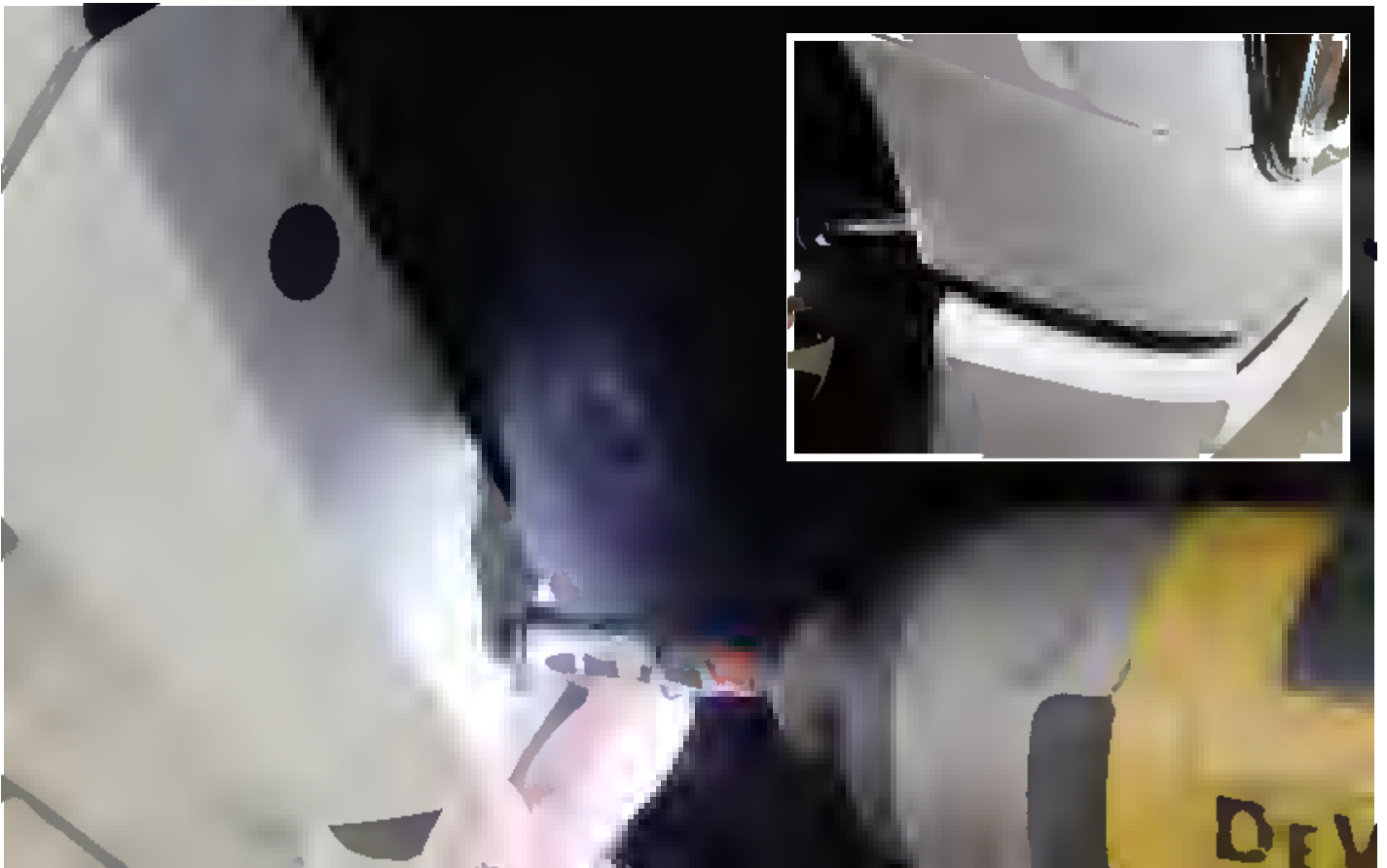
To begin, carefully detach all the clips securing the top plastic radiator shroud. Once the clips are removed, take off the shroud and set it aside for reinstallation at a later stage.





### **STEP 3. REMOVE BUMPER TRIM PIECE**

Unscrew the two 7mm bolts located within each wheel well and remove them.

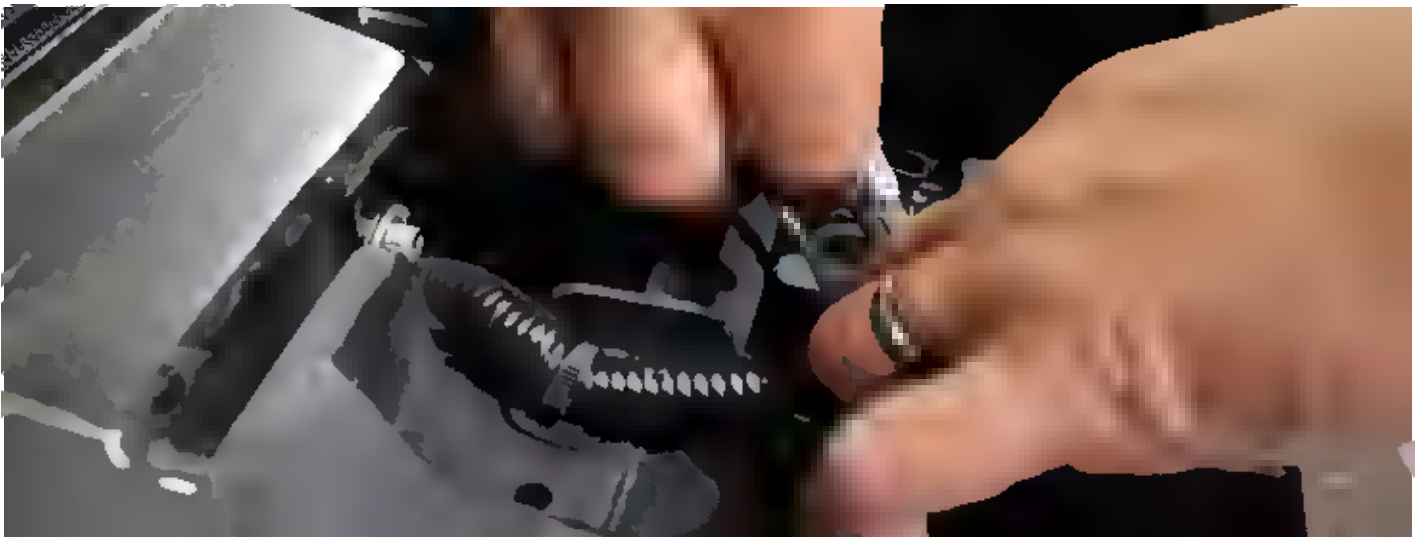
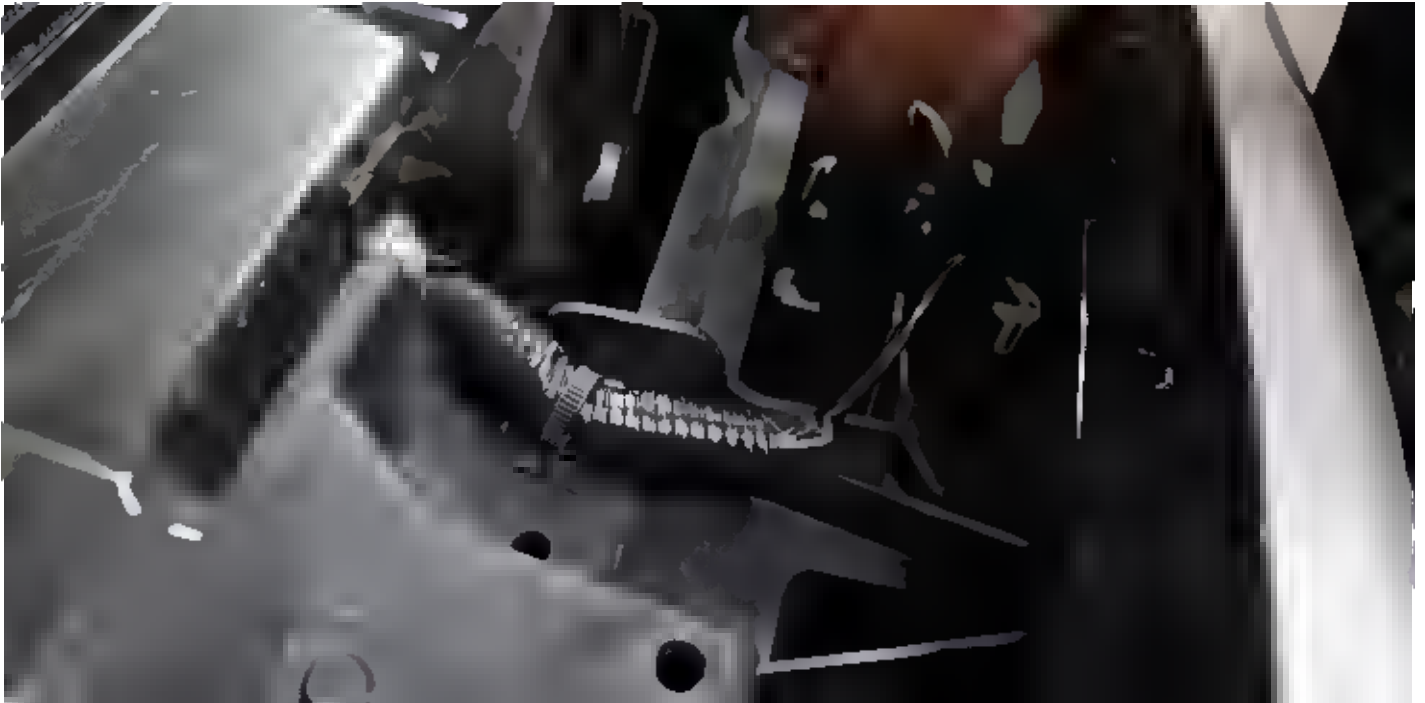


Gently pull the trim piece outward to remove it, and set it aside for future reinstallation.



## STEP 4. UNPLUG TWO CONNECTIONS

Disconnect the two connections for the active grille located at the top of the radiator area.



## STEP 5. REMOVE THE GRILLE

Unscrew the 8mm bolt located beneath each side of the grille to remove it.



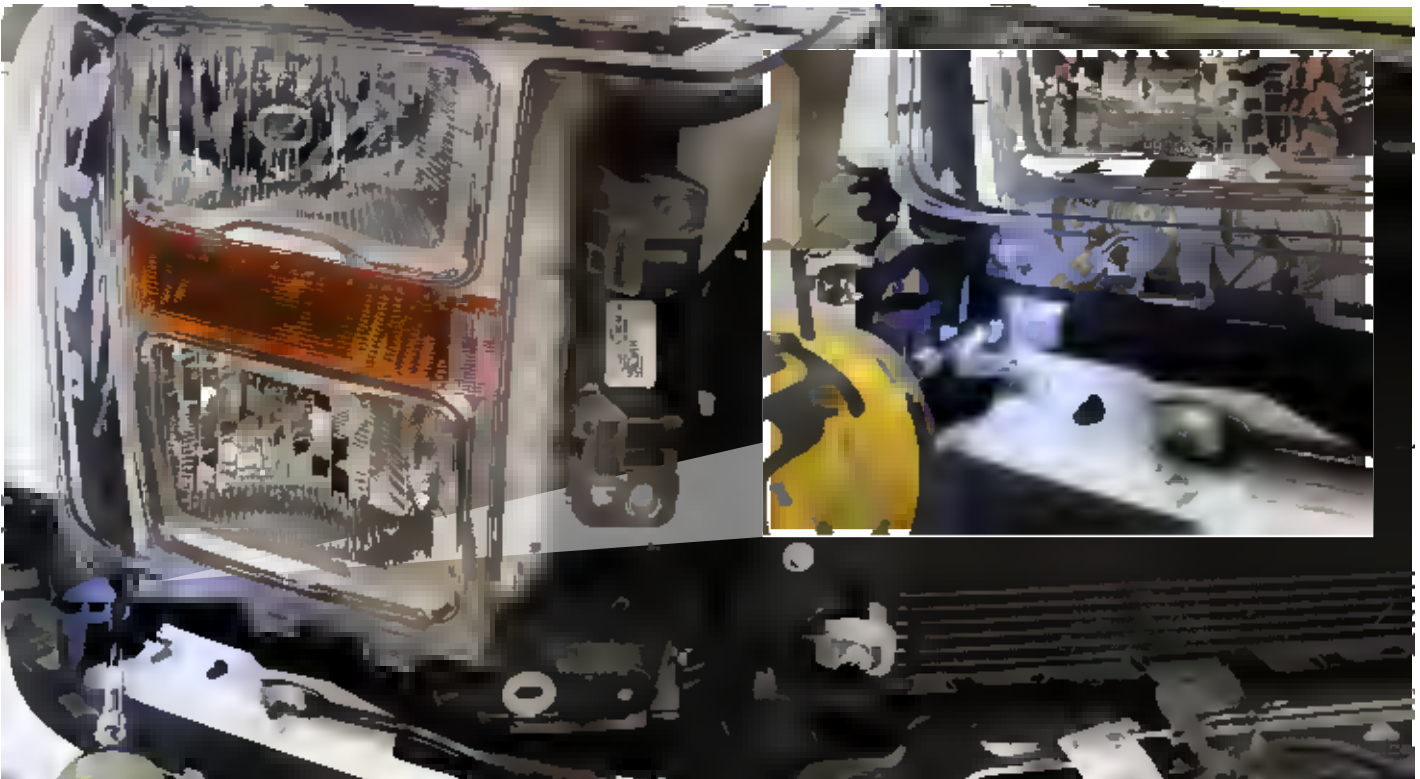
Release the two plastic tension clips and gently pull the grille assembly outward to remove it. Set the assembly aside for future reinstallation.



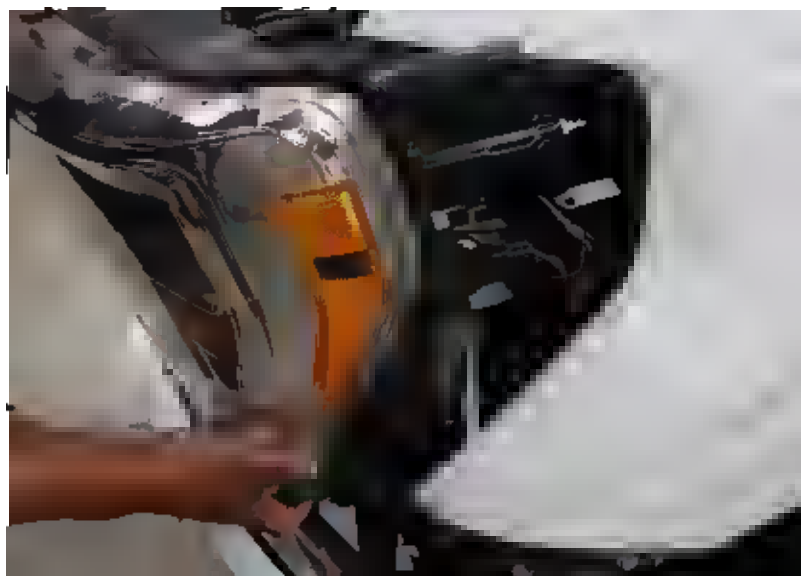
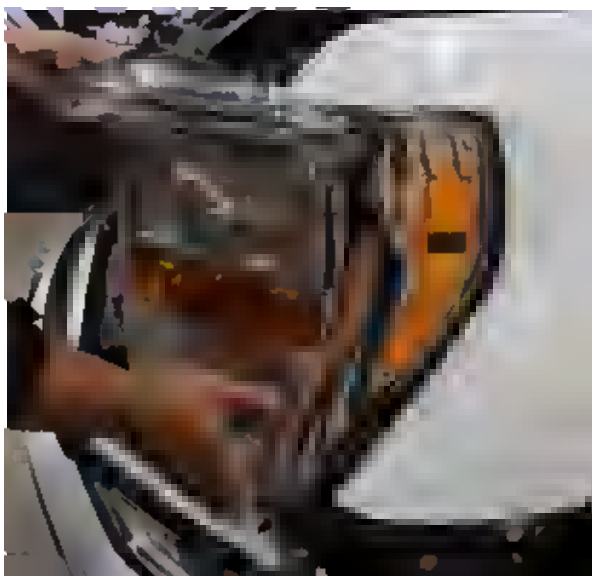


## STEP 6. REMOVE HEADLIGHT BOLTS

Uninstall the headlight from the truck by loosening the following bolts: Each headlight has 2 X 8mm screw bolts on the bottom and 1 X 10mm nut. One push clip on the top and 4 X 10mm bolts.



Gently slide the headlight outward to carefully remove it.



## **STEP 7. UNPLUG HEADLIGHT WIRING CONNECTION**

Disconnect the wiring connection from the back of each headlight housing and place it aside.





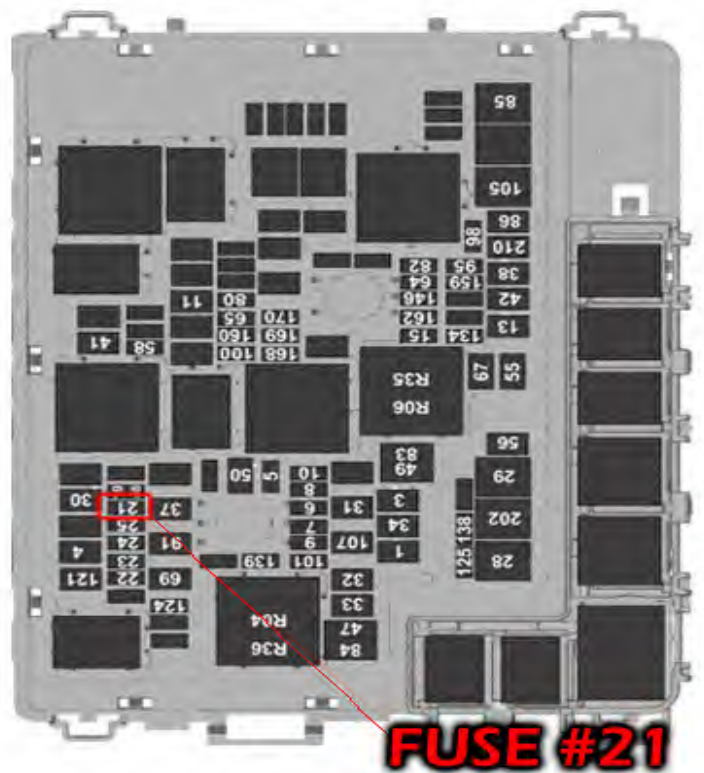
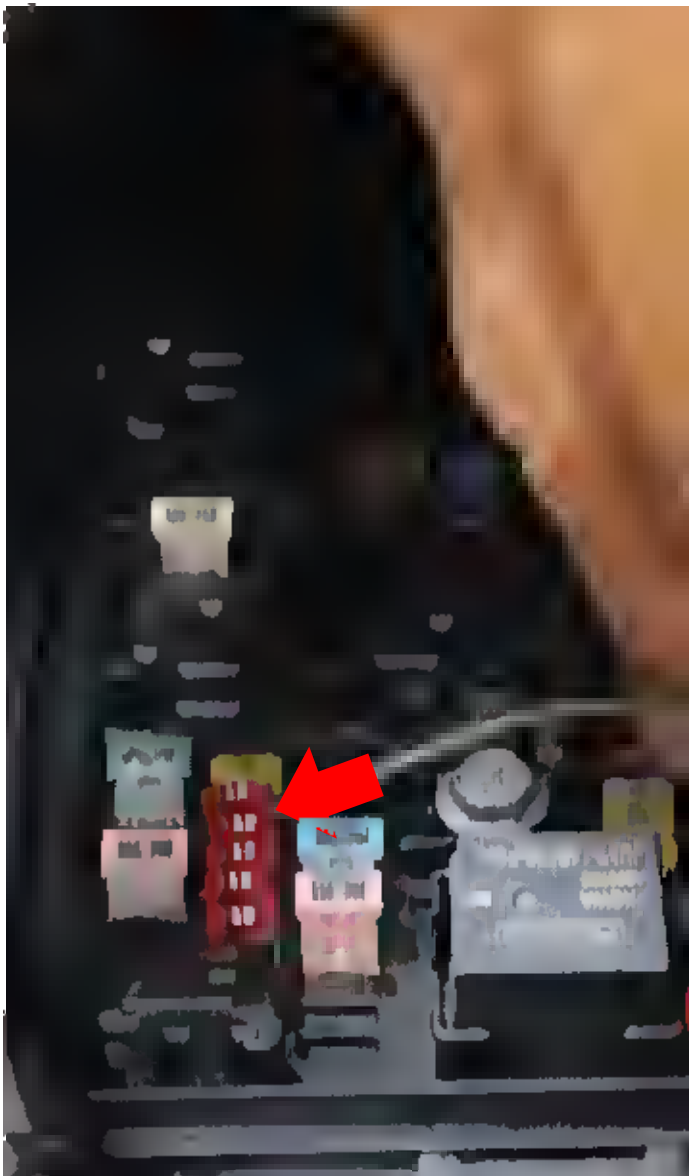
**STEP 8. ROUTE THE DRL HARNESS**

Route the daytime running lights harness towards the two headlights, beginning with the passenger side, which is closest to the truck's battery.

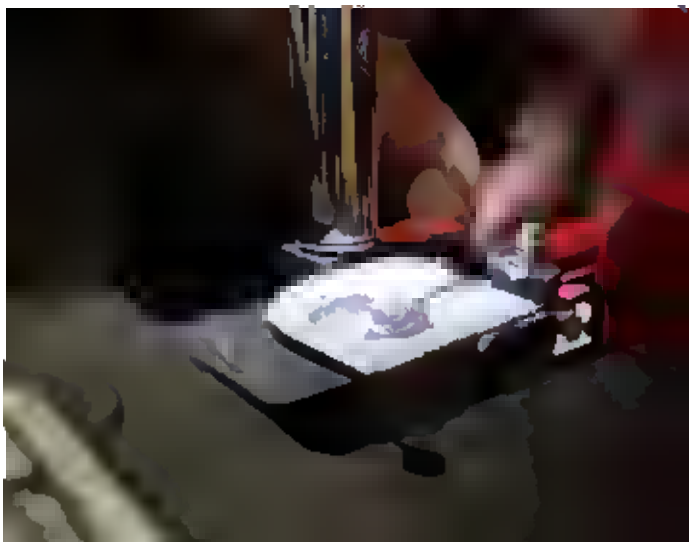


## STEP 9. CONNECT DRL HARNESS TO THE FUSE TAP

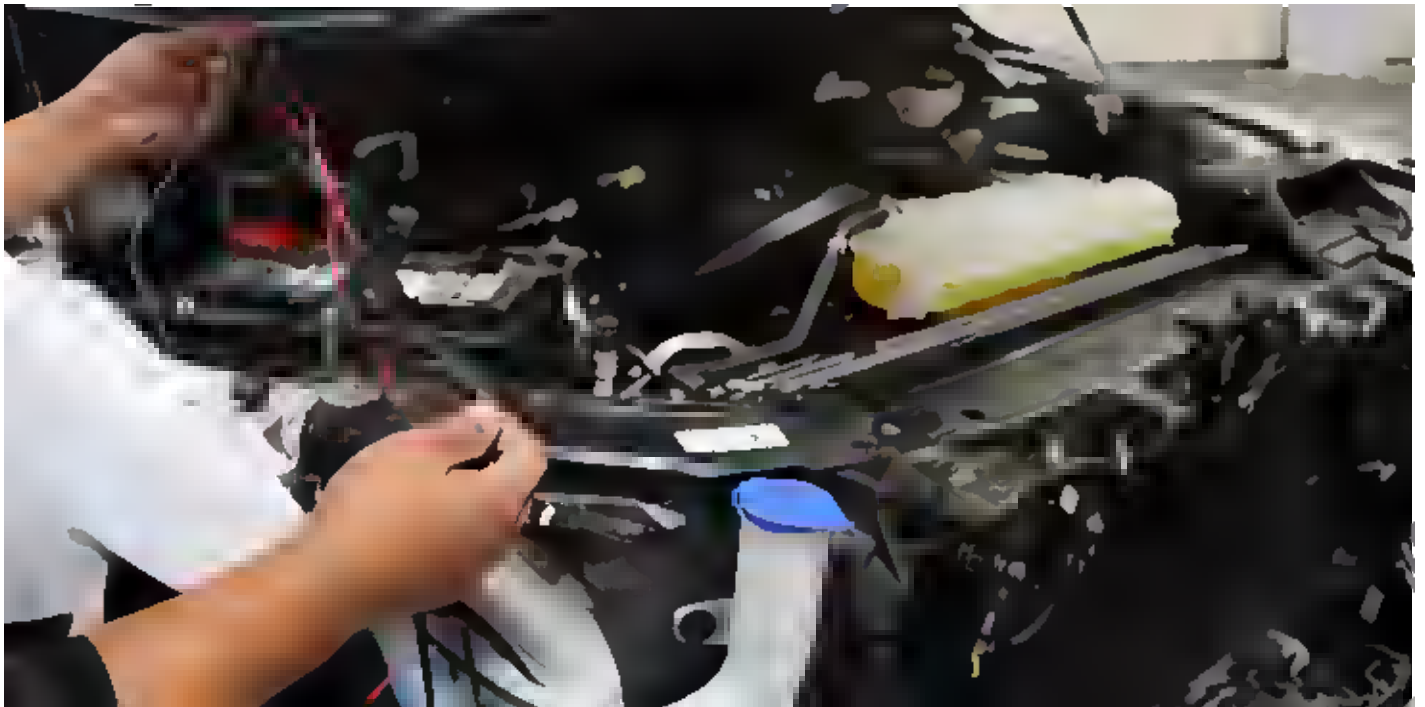
Proceed to the fuse box and connect to fuse number 21.



Attach the red wire to the positive terminal of the battery and the black wire to the negative terminal.



Securely fasten and organize the daytime running lights harness using zip ties.



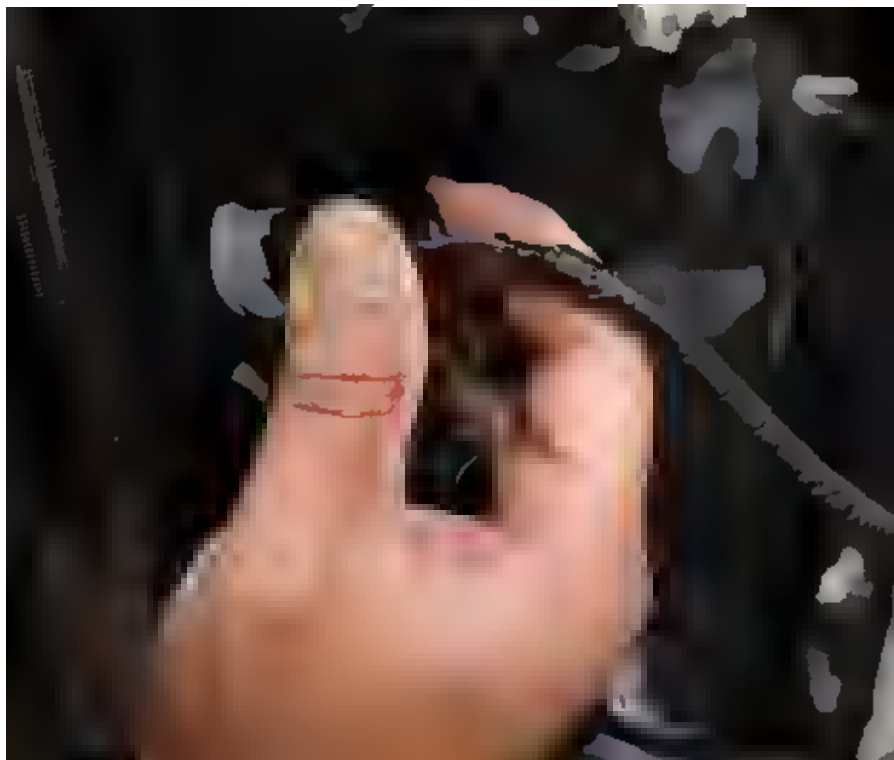
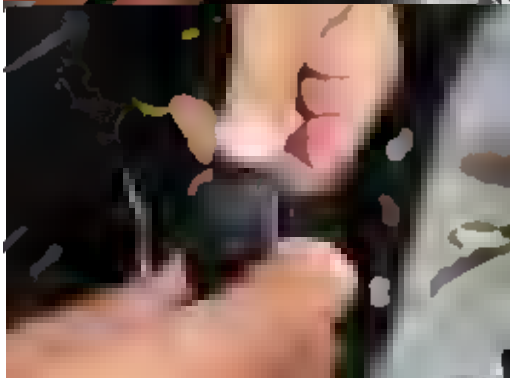
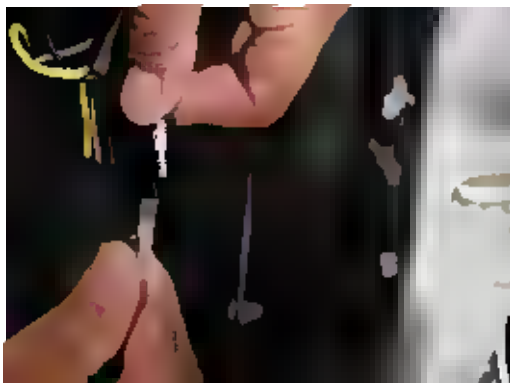
## PART II INSTALL HEADLIGHTS

### STEP 1. INSTALL ALPHAREX HEADLIGHTS



Connect the stock headlight connectors along with the daytime running lights connector to the ALPHAREX headlight. Proceed to install the headlight onto the truck.

**DO NOT USE DIELECTRIC GREASE!**



Perform the same steps outlined earlier on the opposite side headlight for both removal and installation.



## STEP 2. TEST THE HEADLIGHT FUNCTIONS

Test the functions of your ALPHAREX headlights to ensure everything works properly.

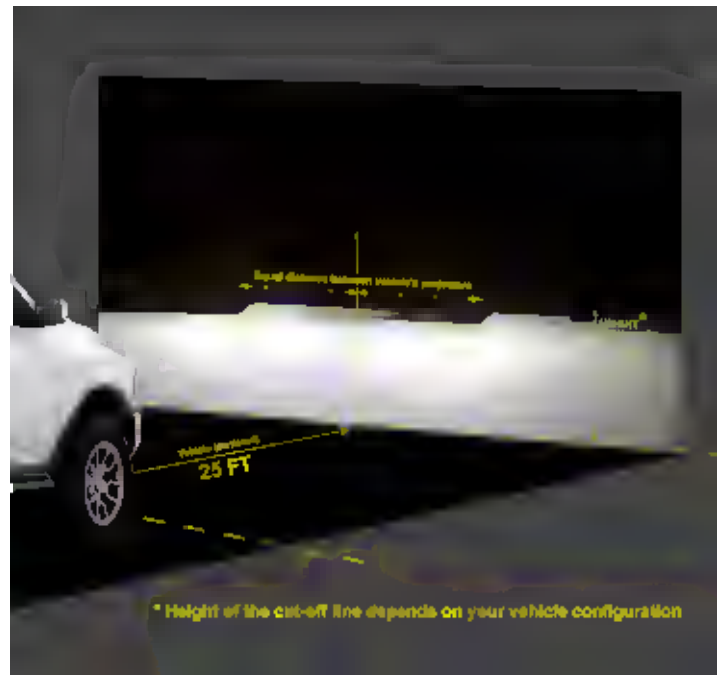


## STEP 3. ADJUST HEADLIGHT LEVEL

Once everything has been tested, aim your ALPHAREX headlights by parking 25ft from a wall and level the headlight evenly.

**Turn clockwise:** to lower the light

**Turn counterclockwise:** to raise the light



## STEP 4. COMPLETE INSTALLATION

Congratulations! You have completed the installation for ALPHAREX 21-23 Ford F150 | RAPTOR HEADLIGHTS.

