

# How to Switch to Amber Daytime Running Light (DRL) for AlphaRex 14-18 GMC Sierra Headlights

## Table of Contents

- AMBER SWITCH PLUGS LOCATION
- CONNECT THE AMBER SWITCH PLUGS
- COMPLETE SWITCHING INTO AMBER DRL & PARKING LIGHTS

*Disclaimer: This installation article is a tutorial guide. By reading this article, you agree it is for reference only and AlphaRex USA and its distributors make no guarantee on the finished results. Under no circumstances whatsoever shall AlphaRex USA nor its distributors be liable for any damage, misuse or personal injuries. If you do not fully understand the installation procedure, it is highly recommended that you seek help from professional mechanics to do the installation.*

This instruction guide is applicable to the following ALPHAREX headlight products:

14-18 GMC Sierra LUXX-Series LED Projector Headlights (Alpha-Black) / SKU: 880614

14-18 GMC Sierra LUXX-Series LED Projector Headlights (Black) / SKU: 880615

14-18 GMC Sierra NOVA-Series LED Projector Headlights (Alpha-Black) / SKU: 880616

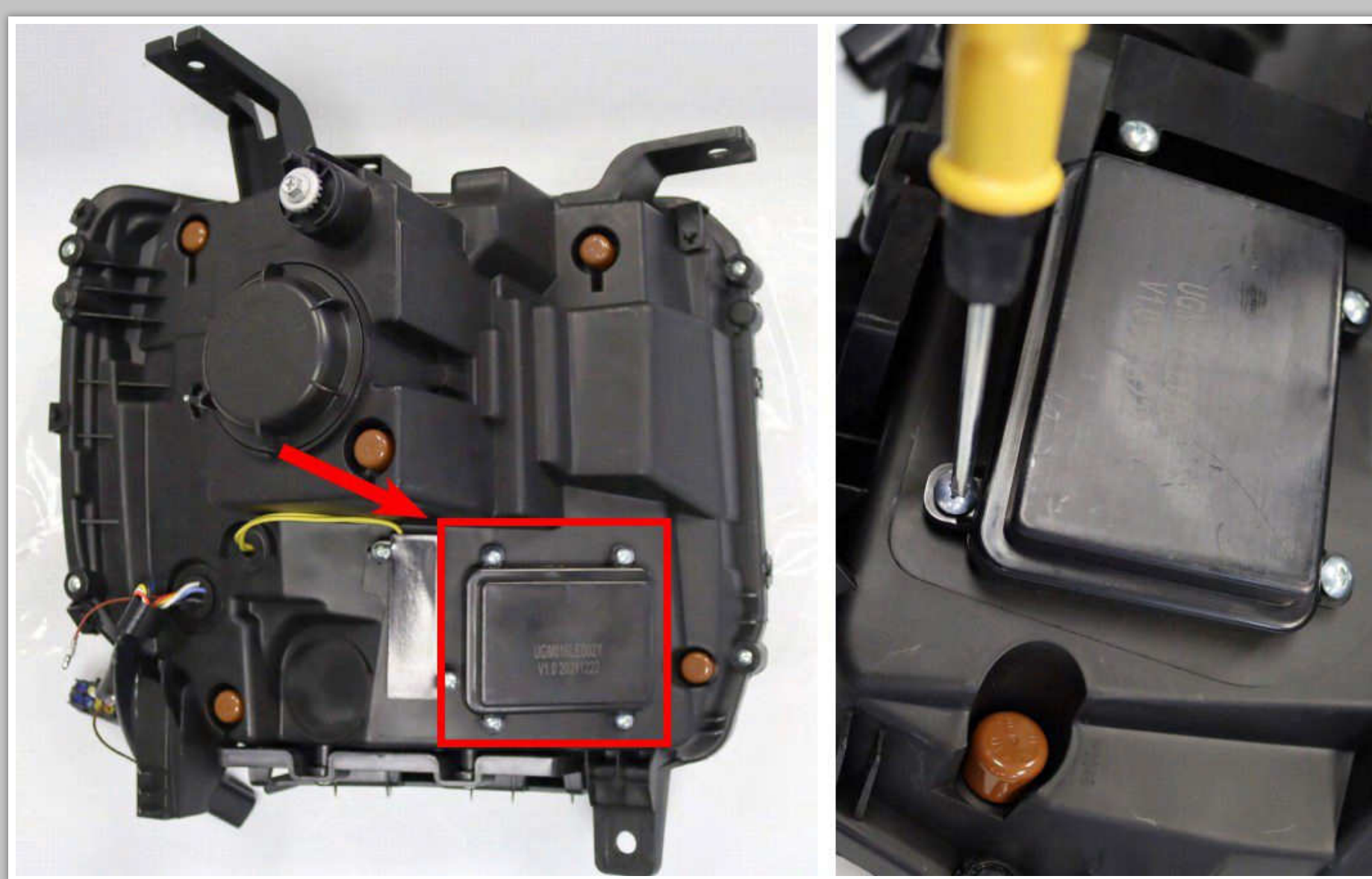
14-18 GMC Sierra NOVA-Series LED Projector Headlights (Black) / SKU: 880617

In the product list, the LUXX-Series and the NOVA-Series headlights designed for the 2014-18 GMC Sierra offer an optional switch plug, allowing you to customize the color of the Daytime Running Lights (DRL) and Parking lights to Amber (Yellow). By default, these lights come in White from the factory.

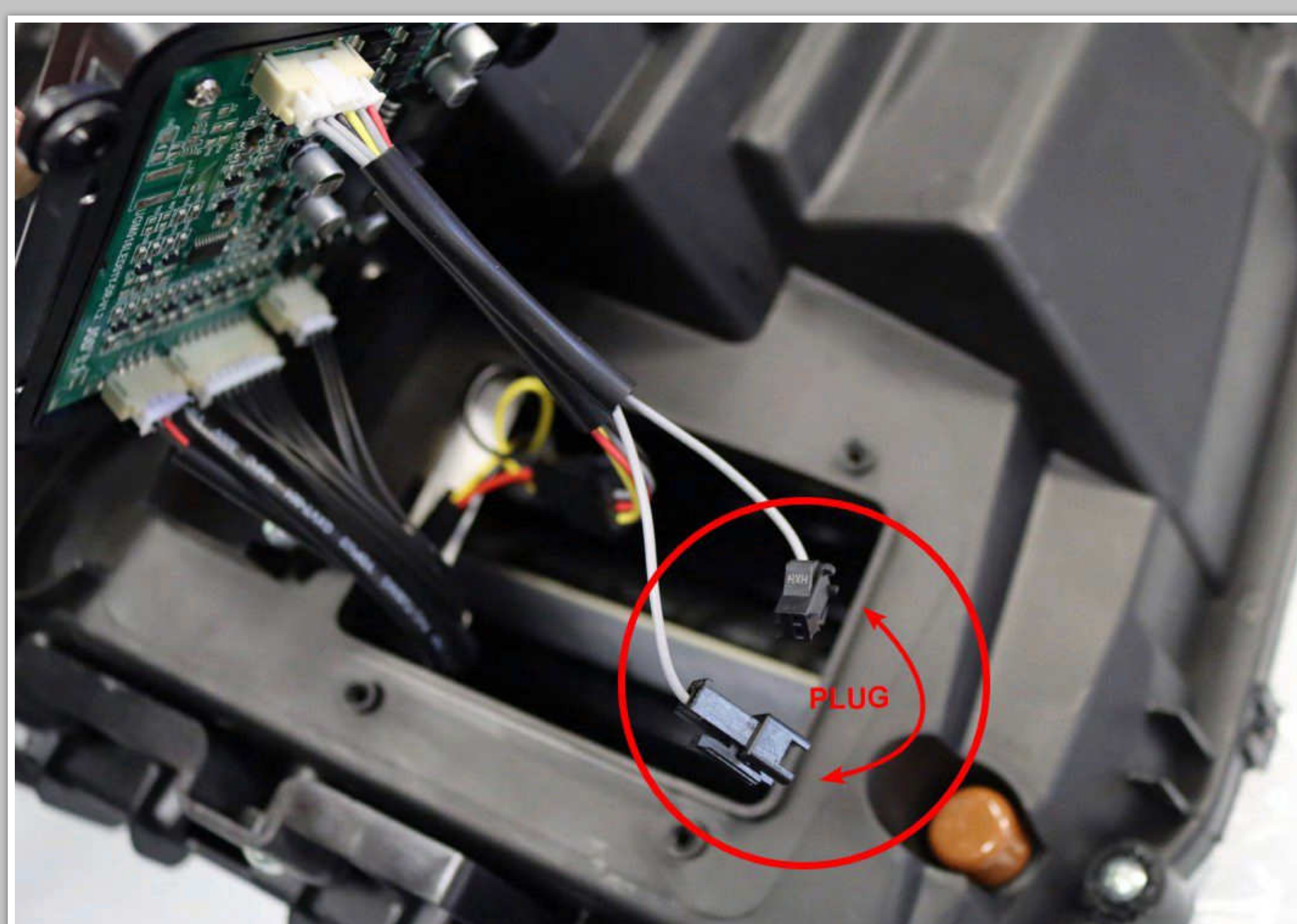
Customers have the flexibility to choose Amber (Yellow color) based on their preference. PLEASE NOTE: Once you have plugged in and switched to Amber, the color of the Daytime Running Lights (DRL) and Parking lights will remain in Amber (Yellow color).

## AMBER SWITCH PLUGS LOCATION

To access the back of each ALPHAREX headlight, unscrew the four screws securing the rectangular cover at the back, and then open the cover.

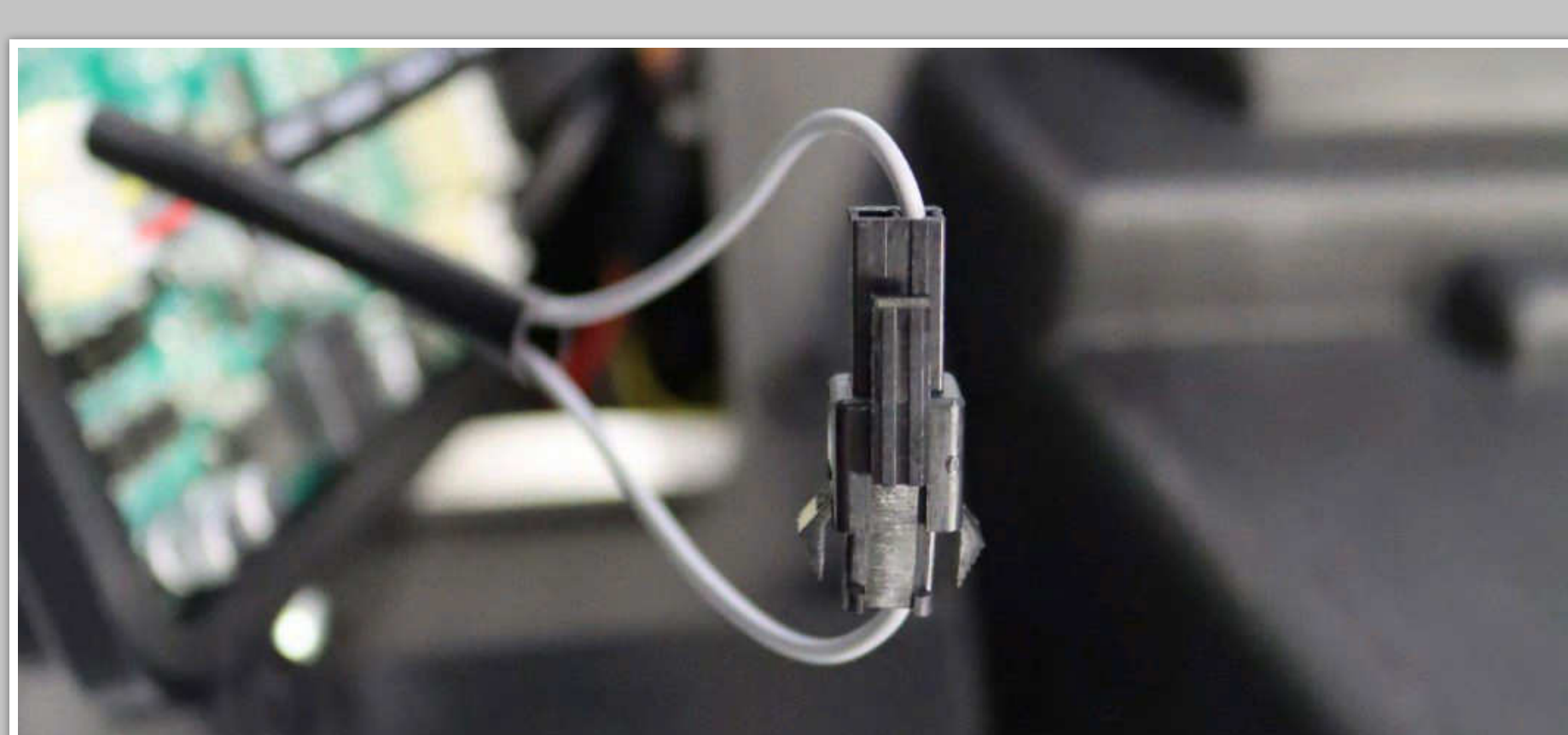


Within the headlight assembly, you'll find plug connectors specifically designed for switching the DRL (Daytime Running Lights) and Parking lights into Amber (Yellow color).



## CONNECT THE AMBER SWITCH PLUGS

Connect the amber DRL plugs directly to each of the headlights.  
DO NOT USE DIELECTRIC GREASE!



## COMPLETE SWITCHING INTO AMBER DRL & PARKING LIGHTS

After plugging in the connection, reinstall the headlights onto the vehicle. Congratulations! You have successfully switched to Amber (Yellow color) Daytime Running Lights (DRL) and Parking lights.

