

Installation Guide for 14-22 Toyota Tundra Headlights

ALPHAREX specializes in designing and producing superior and uniquely stylish aftermarket automotive performance lighting with unrival innovative technology. The following installation guide we take you through the installation of your new **ALPHAREX HEADLIGHTS** for your 2014-22 TOYOTA TUNDRA step by step.

NOTE: This vehicle require the DRL harness installed for the headlight to function properly.

DO NOT USE DIELECTRIC GREASE!



Table of Contents



PART I REMOVE HEADLIGHTS

- **INSTALLATION TOOLS**
- **STEP 1.** Disconnecting the negative battery terminal
- **STEP 2.** Front grille removal
- **STEP 3.** Remove bumper trim piece
- **STEP 4.** Remove headlight bolts
- **STEP 5.** Release the wiring harness
- **STEP 6.** Remove the turn signal bulb and transfer into the new headlights

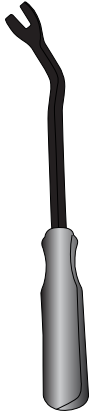
PART II INSTALL HEADLIGHTS & WIRING

- **STEP 1.** Connect DRL harness
- **STEP 2.** Tap the fuse
- **STEP 3.** Plug and install headlights
- **STEP 4.** Test the headlight functions
- **STEP 5.** Adjust headlights level and complete installation

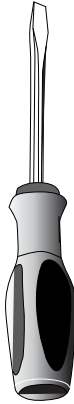
PART I REMOVE HEADLIGHTS

INSTALLATION TOOLS

PREPARE THESE TOOLS FOR INSTALLATION



Metal Panel Popper



Flat Screwdriver



Phillips Screwdriver



1/4 Ratchet



1/4 Extension

10mm



Socket

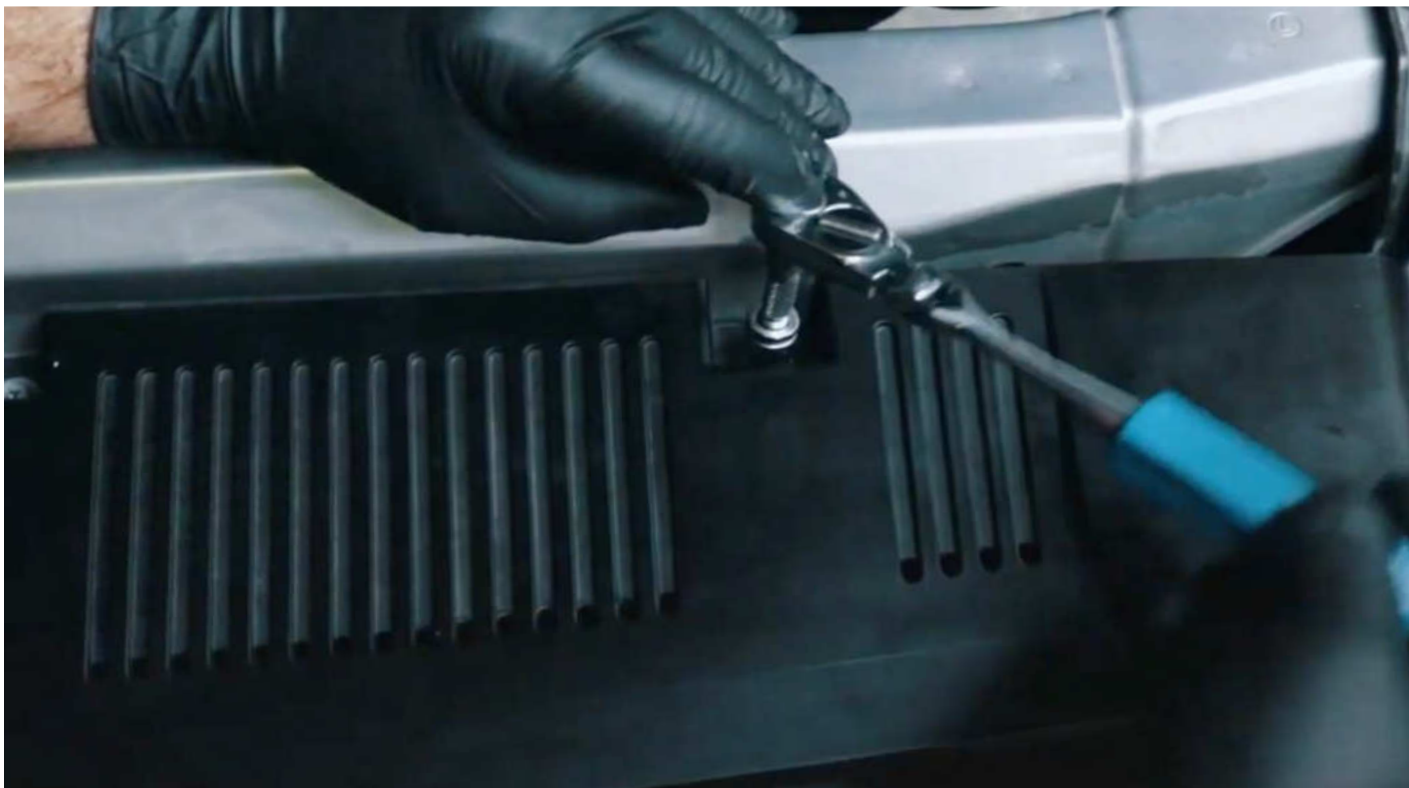
STEP 1. DISCONNECTING THE NEGATIVE BATTERY TERMINAL

Whenever working on your vehicle always start by disconnecting the negative battery terminal.



STEP 2. FRONT GRILLE REMOVAL

Open hood and remove 4 X 10mm bolts on the top of the grille followed by the 2 plastic clips at the corners of the grille.



Remove the grille from the truck and set it aside to be reinstalled.



STEP 3. REMOVE BUMPER TRIM PIECE

Remove the 2 X 10mm bolts inside the wheel well.



Remove the clip located on the inside of the trim piece.
Please follow the same procedure for the other side.



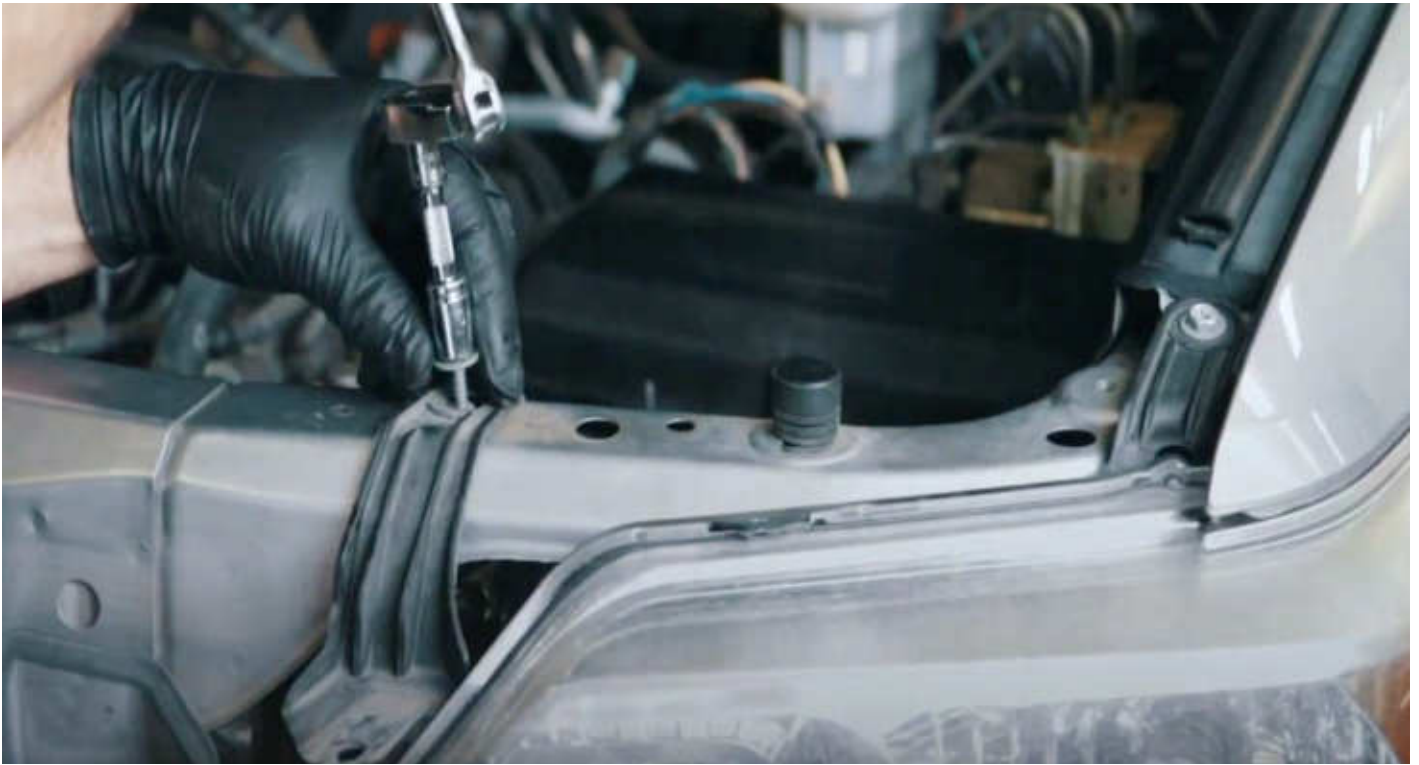
Once the bolts and clips are removed, carefully remove the trim piece and set it aside to be reinstalled later.



STEP 4. REMOVE HEADLIGHT BOLTS

The headlight is secured with 3 X 10mm bolts, remove them with a wrench.





Lift up on the two top arms and remove the headlight from the truck.
Please follow the same procedure for the other side.



STEP 5. RELEASE THE WIRING HARNESS

Unplug the side marker headlight leveling and turn signal harness from the headlight.

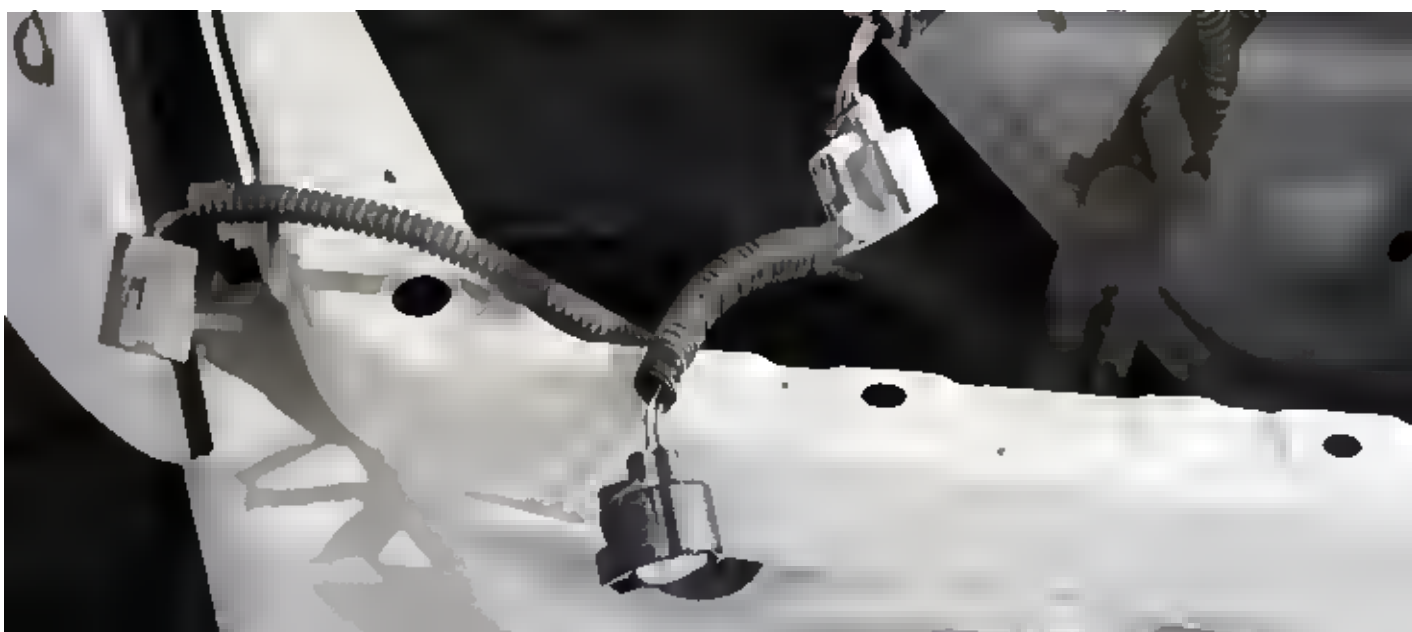
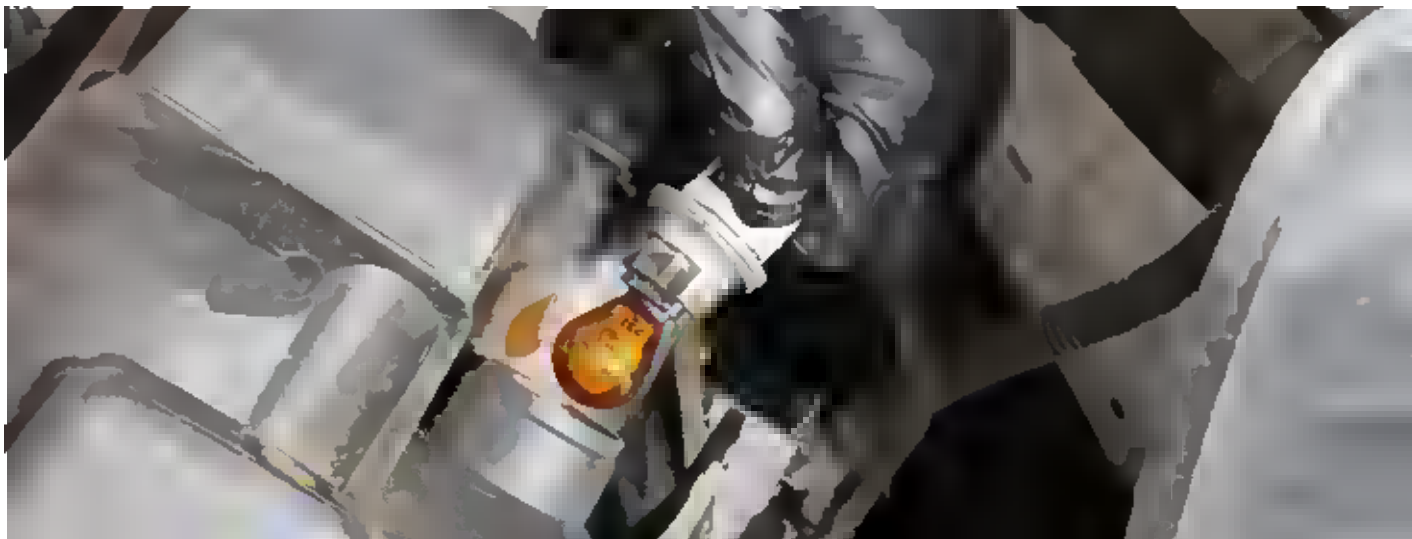


Use the panel popper to release the wiring harness from the headlight.

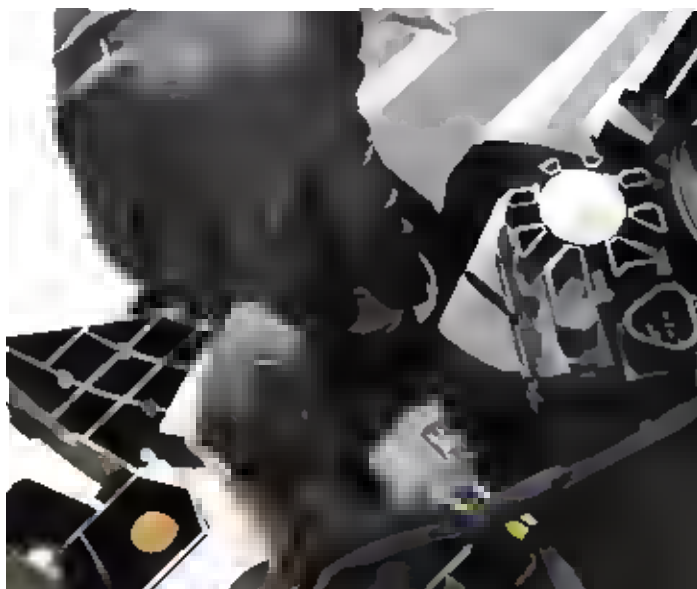


STEP 6. REMOVE THE TURN SIGNAL BULB AND TRANSFER INTO THE NEW HEADLIGHTS

First, unplug and remove the turn signal light bulb.



Transfer the turn signal bulb into the new ALPHAREX headlight.



Next, connect the turn signal light socket from the new ALPHAREX headlight assembly.
Please follow the same steps for the other side of the headlight.



PART II INSTALL HEADLIGHTS & WIRING

STEP 1. CONNECT DRL HARNESS



Prepare to connect the daytime running light harness with the red wire to the battery positive and the black wire to the battery negative or to the 10mm bolt of the fender grounding cable in order for the daytime running lights to function during the day.

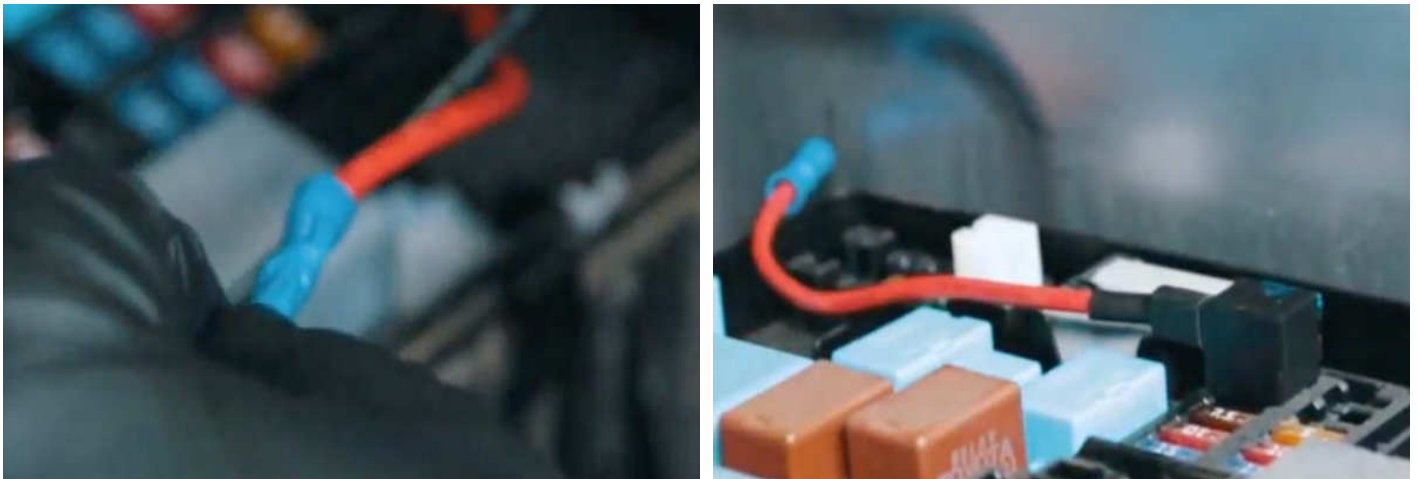


STEP 2. TAP THE FUSE

Remove the fuse box cover and locate the IGN and add it to the fuse tap.



Crimp the gray wire from the harness to the fuse tap and reinstall the fuse box cover.



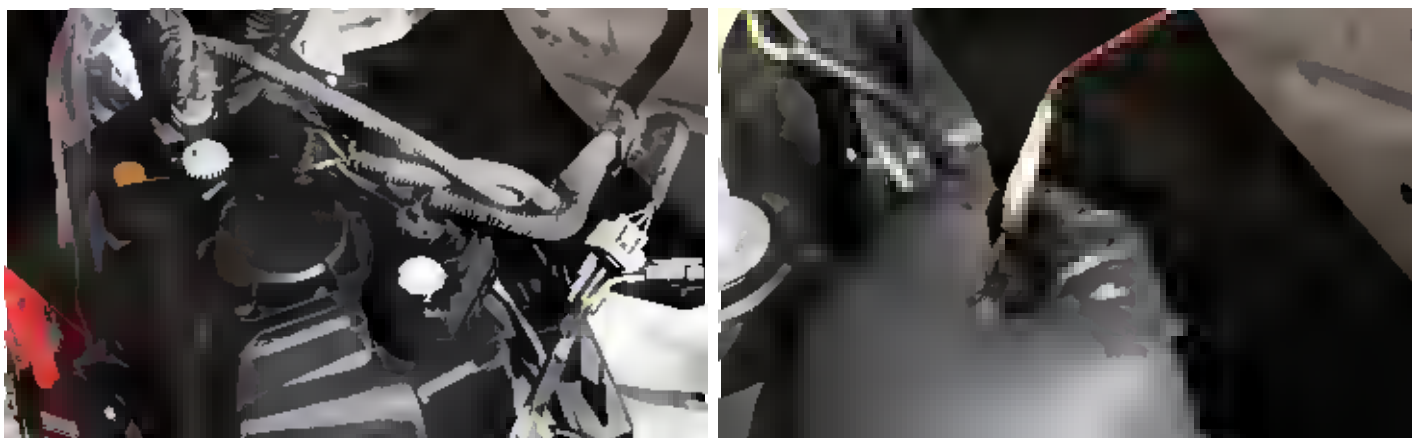
STEP 3. PLUG AND INSTALL HEADLIGHTS



Connect the trucks low/high beam leveling motor and turn signal harness to the ALPHAREX headlight. **DO NOT USE DIELECTRIC GREASE!**



Attach the harness to the daytime running light connection on the back of the headlight.



Reattach the headlight wiring harness on to the ALPHAREX headlight. **DO NOT USE DIELECTRIC GREASE!**



Finish the installation by securing the headlight to the truck.
Please follow the same procedure for the other side.



STEP 5. TEST THE HEADLIGHT FUNCTIONS

Test the functions of your ALPHAREX headlights to ensure everything works properly.



STEP 6. ADJUST HEADLIGHTS LEVEL AND COMPLETE INSTALLATION

Secure all bolts and reverse the unistall process to complete installation. Next, aim the headlights at about 25ft against a wall on a level surface for headlights level adjustment.

Turn clockwise: to lower the light

Turn counterclockwise: to raise the light



Congratulations! you have completed the installation for ALPHAREX 14-22 Toyota Tundra Headlights.

