



## Installation Guide for 2017-19 Ford Super Duty F250 | F350 | F450 | F550 Headlights

ALPHAREX specializes in designing and producing superior and uniquely stylish aftermarket automotive performance lighting with unrivalled innovative technology. This installation guide takes you through the step-by-step process of installing your new **ALPHAREX HEADLIGHTS** for your 2017-19 Ford Super Duty F250 | F350 | F450 | F550

**DO NOT USE DIELECTRIC GREASE!**



### Table of Contents



#### PART I REMOVE HEADLIGHTS

- **INSTALLATION TOOLS**
- **STEP 1.** Disconnecting the negative battery terminal
- **STEP 2.** Remove the radiator shroud
- **STEP 3.** Remove the grille
- **STEP 4.** Remove the headlight bolts
- **STEP 5.** Unplug the headlight wiring harness

#### PART II INSTALL HEADLIGHTS

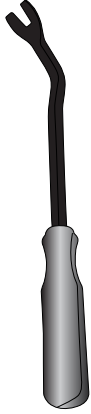
- **STEP 1.** Route the DRL harness
- **STEP 2.** Tap the fuse
- **STEP 3. Plug the wires** (important steps) and install the headlights
- **STEP 4.** Test the headlight functions
- **STEP 5.** Adjust headlight level
- **STEP 6.** Complete installation

*Disclaimer: This installation article is a tutorial guide. By reading this article, you agree it is for reference only and AlphaRex USA and its distributors make no guarantee on the finished results. Under no circumstances whatsoever shall AlphaRex USA nor its distributors be liable for any damage, misuse or personal injuries. If you do not fully understand the installation procedure, it is highly recommended that you seek help from professional mechanics to do the installation.*

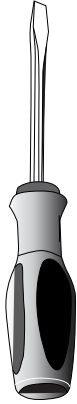
# PART I REMOVE HEADLIGHTS

## INSTALLATION TOOLS

PREPARE THESE TOOLS FOR INSTALLATION



Metal Panel Popper



Flat Screwdriver



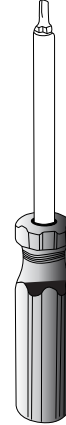
Pick Tool



1/4 Ratchet



1/4 Extension



Torx Screwdriver



T25 Star Torx



10mm

Socket

**NOTE:** Whenever using a power tool, please make sure do not overtighten the screws.

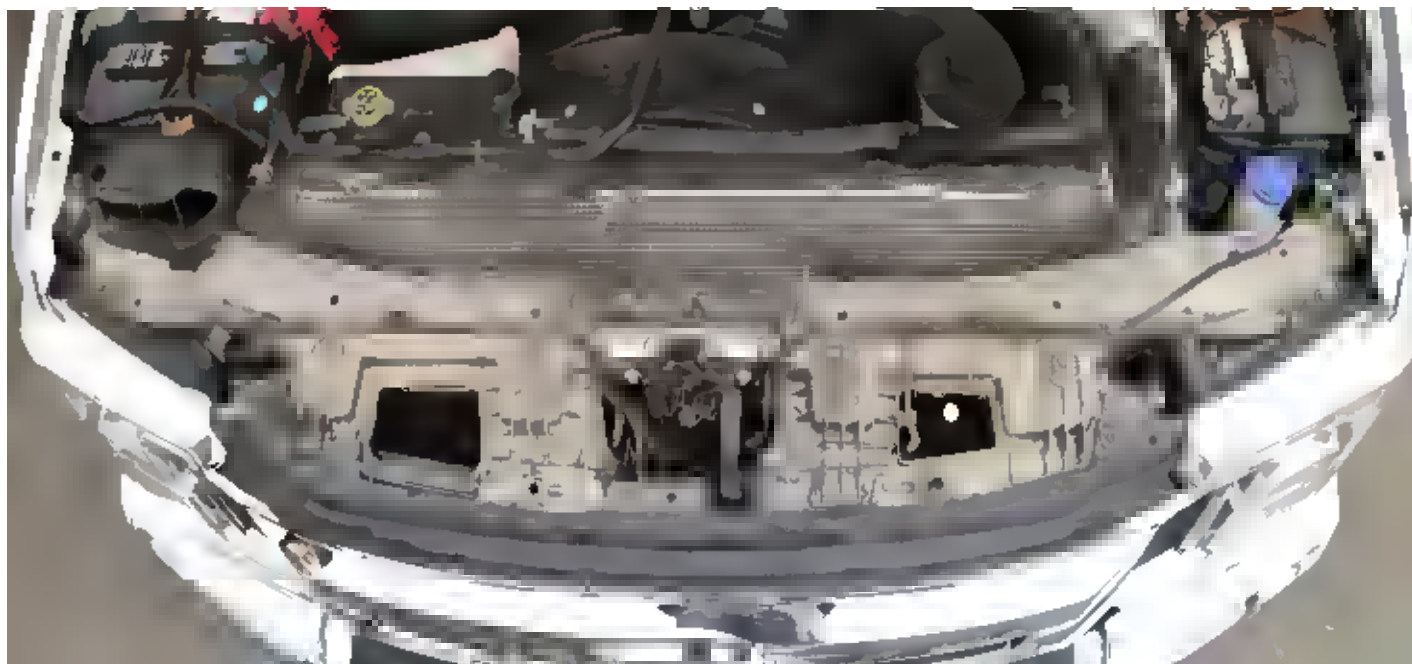
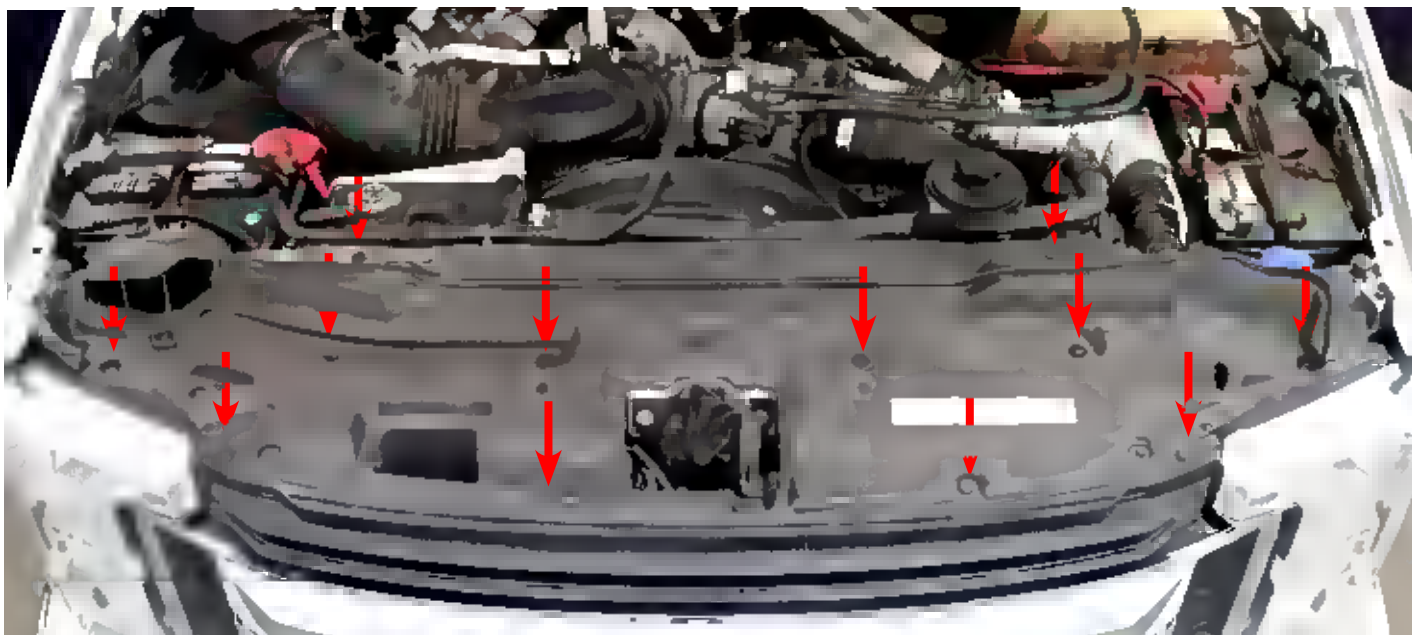
## STEP 1. DISCONNECTING THE NEGATIVE BATTERY TERMINAL

Whenever working on your vehicle, always start by disconnecting the negative battery terminal.



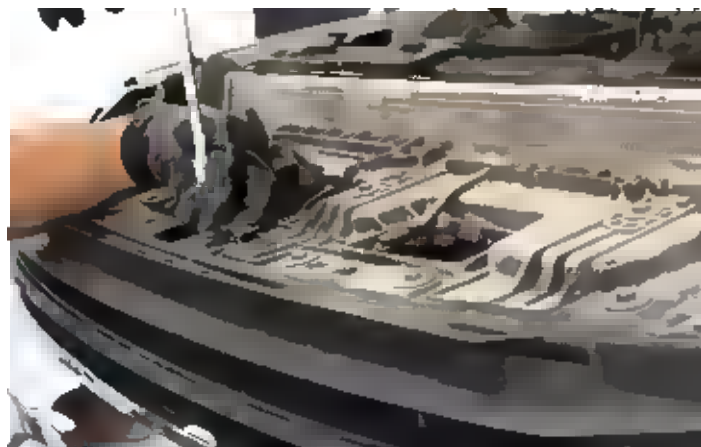
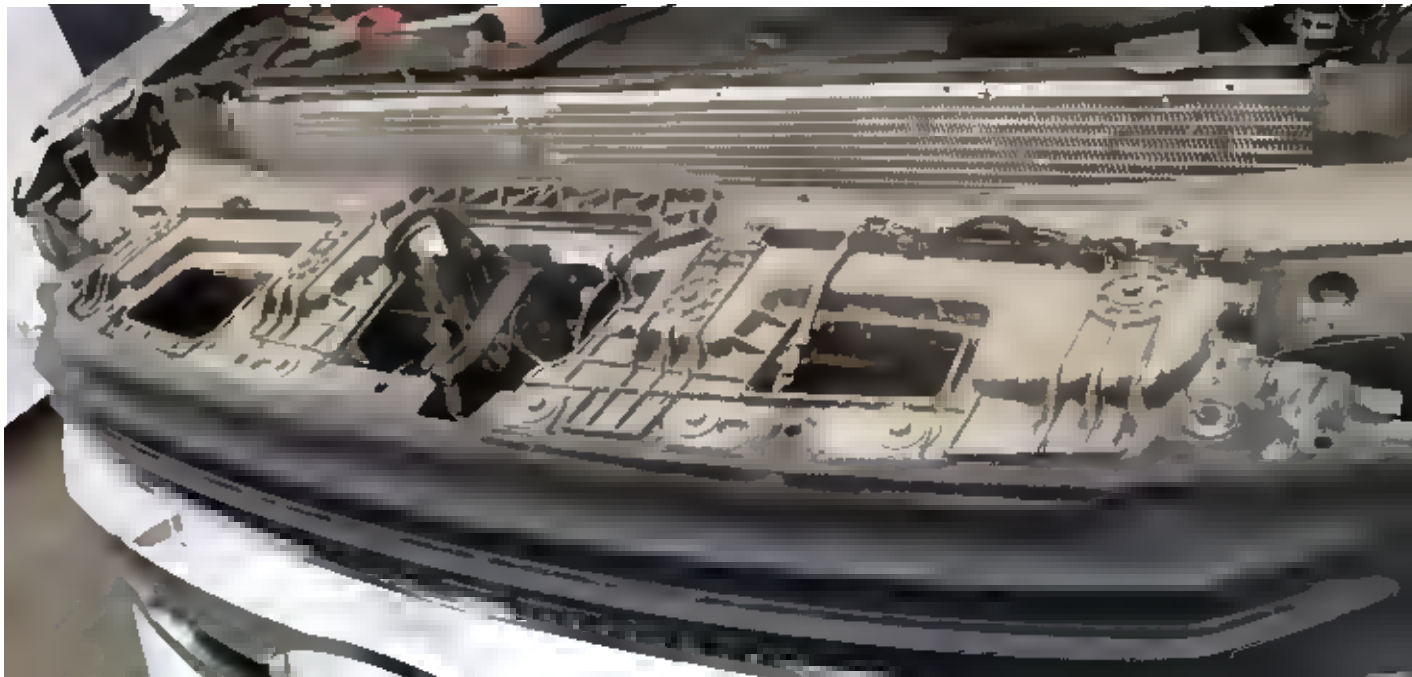
## STEP 2. REMOVE THE RADIATOR SHROUD

Utilize a panel popper to begin the process of removing the (12) plastic push pins that are securing the radiator shroud in place.



### STEP 3. REMOVE THE GRILLE

Unscrew and remove the 10mm bolts located on the top of the grille.

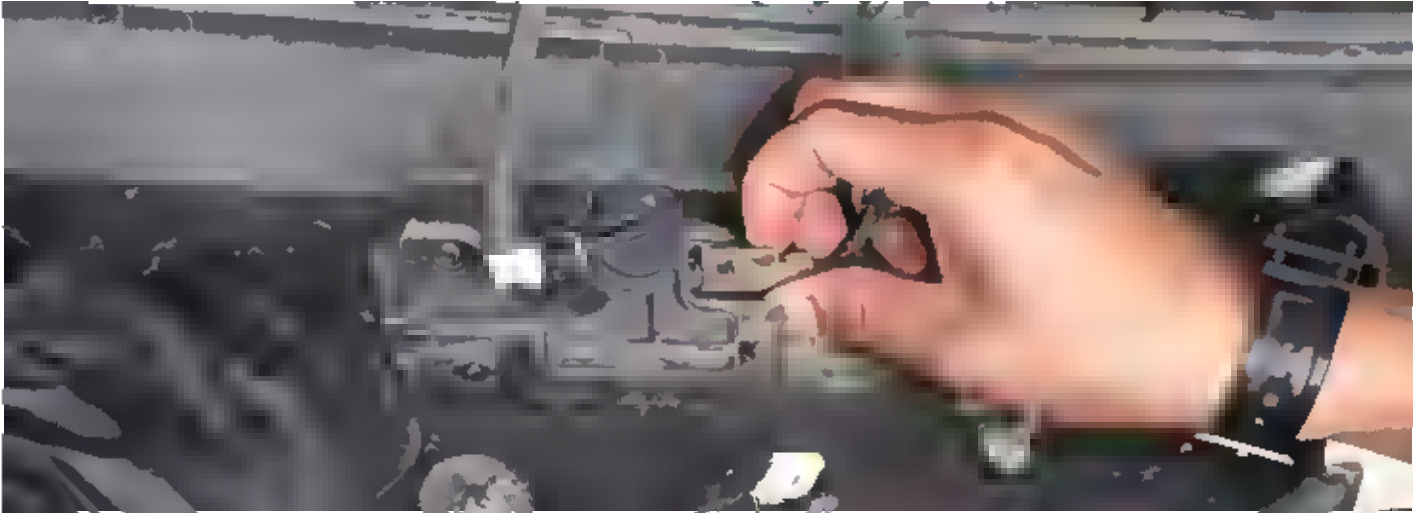


Next, employ a flat screwdriver to assist in releasing the (4) grille molding clips located at the bottom of the grille.





Subsequently, gently pull the grille outward towards you to disengage it from all the mounting points and remove the front grille. If your truck is equipped with a Front View Camera Washer, ensure to unplug the nozzle's tube and the wiring before removing the grille.



## STEP 4. REMOVE THE HEADLIGHT BOLTS

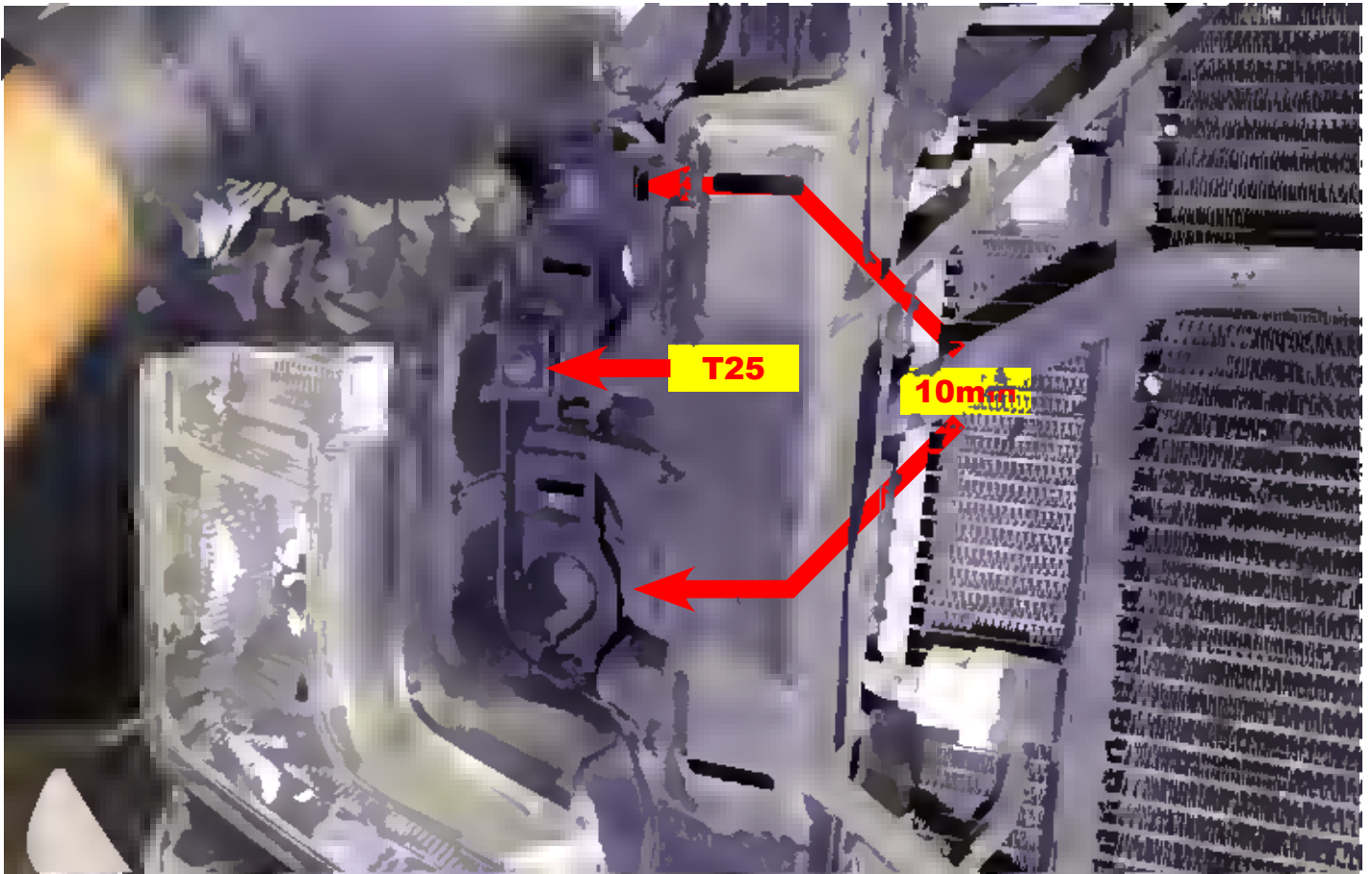
Take out the 10mm bolts and the T25 bolt from each of the headlight housing to facilitate their removal.



Utilize a ratchet to unscrew the top 10mm bolts securing the headlight.



Proceed to remove the two 10mm bolts and one T25 bolt located on the side of the headlight.



Utilize an extension to assist in removing the 10mm bolt from the side of the headlight, located inside the front fender and bumper mounts. Repeat these steps for the other side of the headlight.

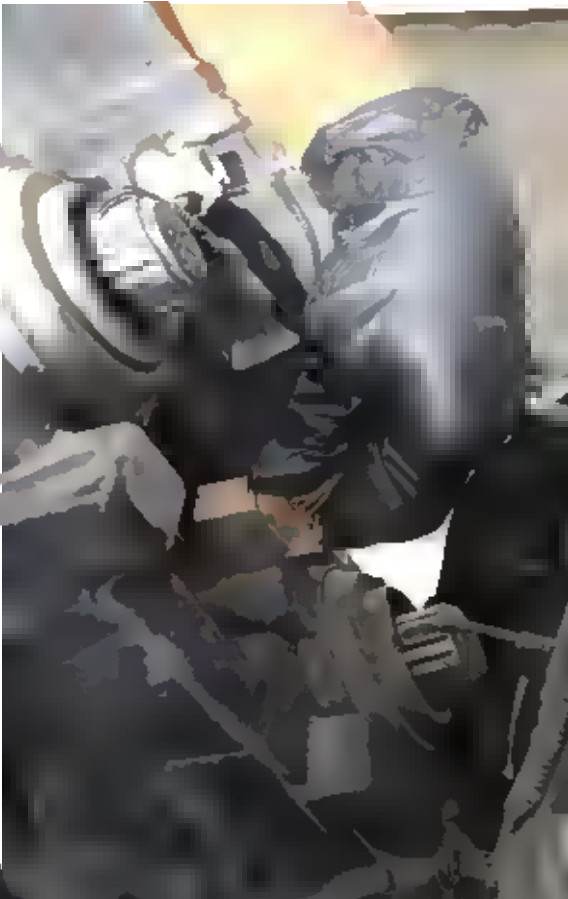


## STEP 5. UNPLUG THE HEADLIGHT WIRING HARNESS

Gently pull out the headlight and disconnect the headlight wiring harness.



Repeat the identical steps for the other side of the headlight.





## PART II INSTALL HEADLIGHTS

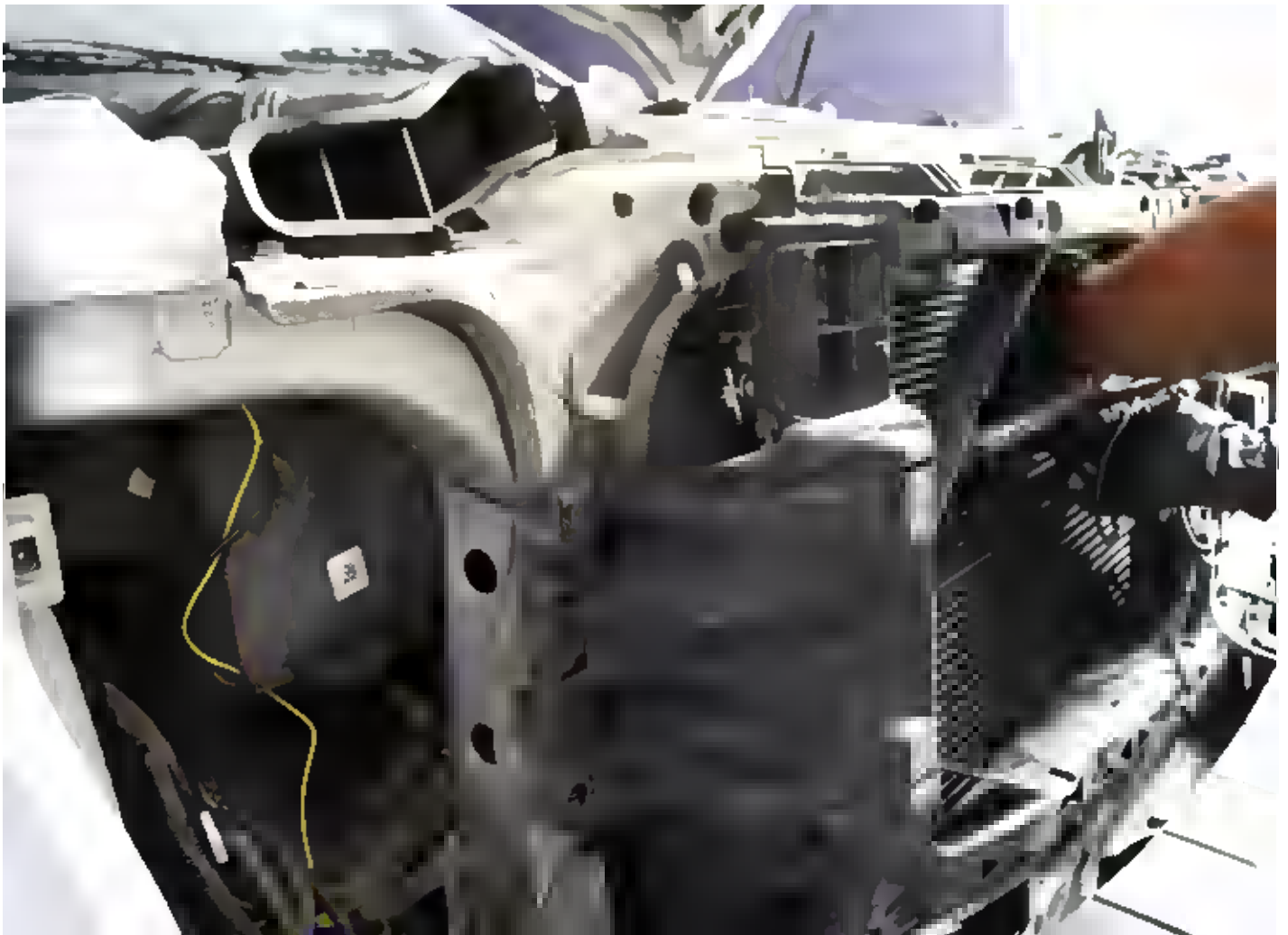
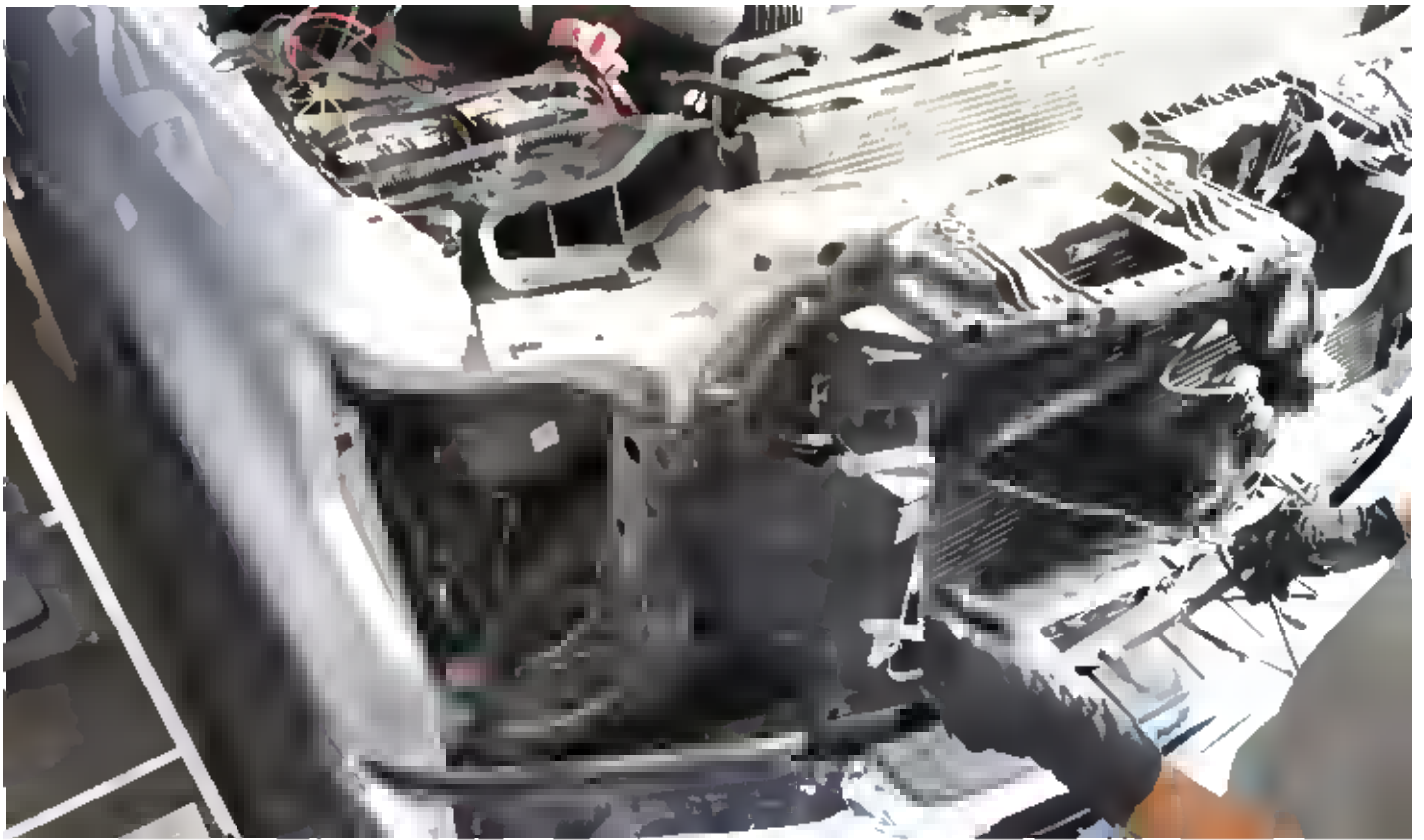


### STEP 1. ROUTE THE DRL HARNESS

Start the routing of the DRL wires from the passenger's side, which is nearest to the battery and fuse box. Connect the red wire to the battery's positive terminal and the black wire to either the battery's negative terminal or the 10mm bolt on the firewall.

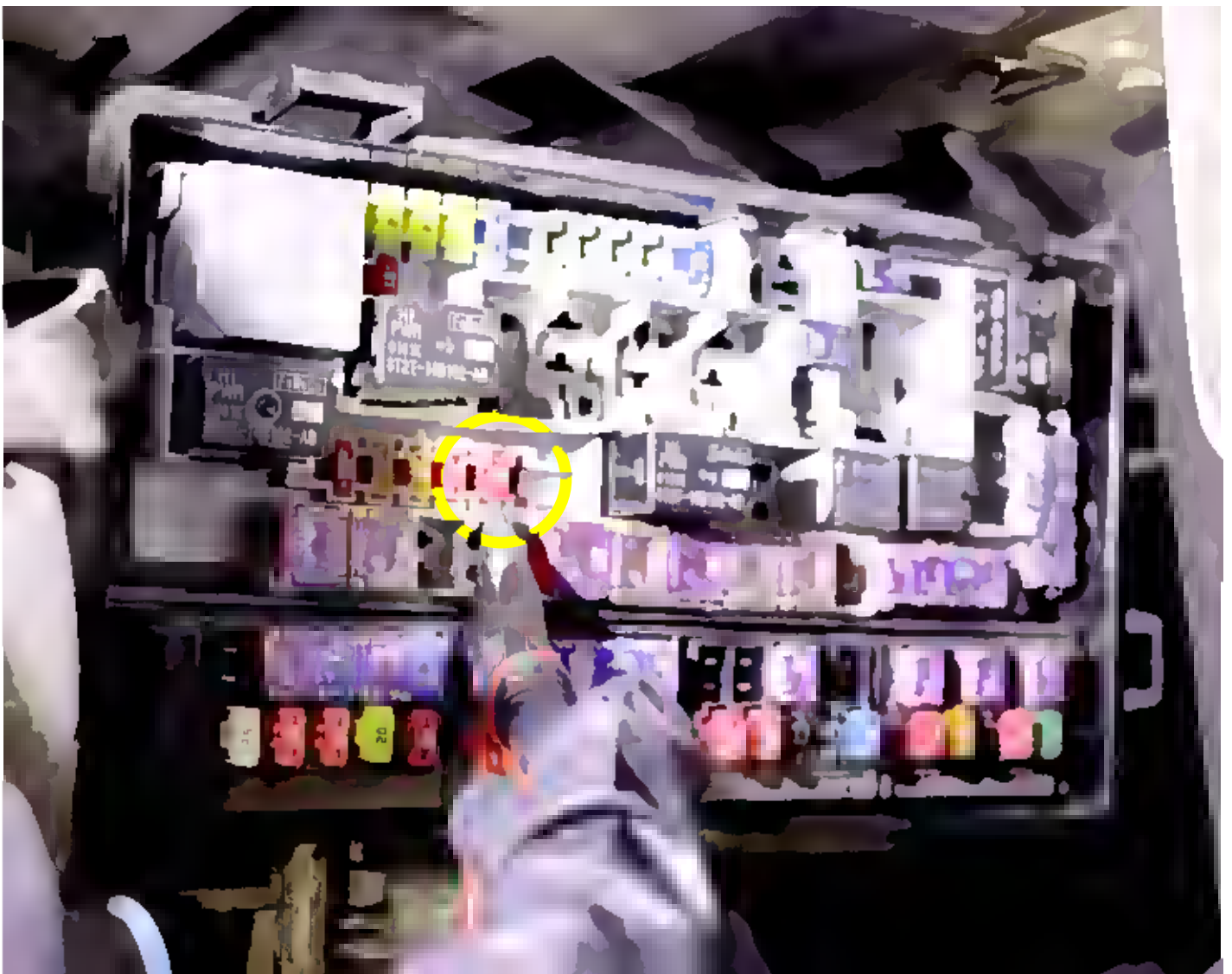
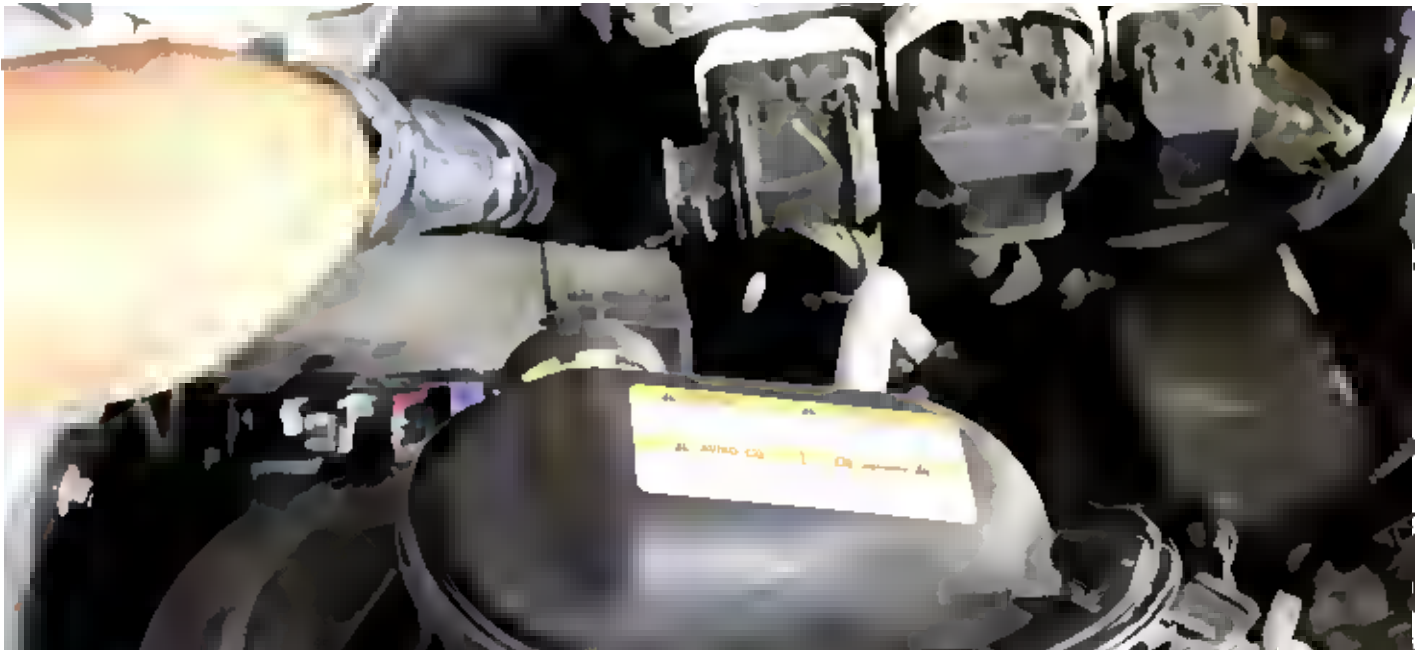


Guide the DRL wires to both sides of the headlights.



## STEP 2. TAP THE FUSE

Open the fuse box and find the 10A fuse.

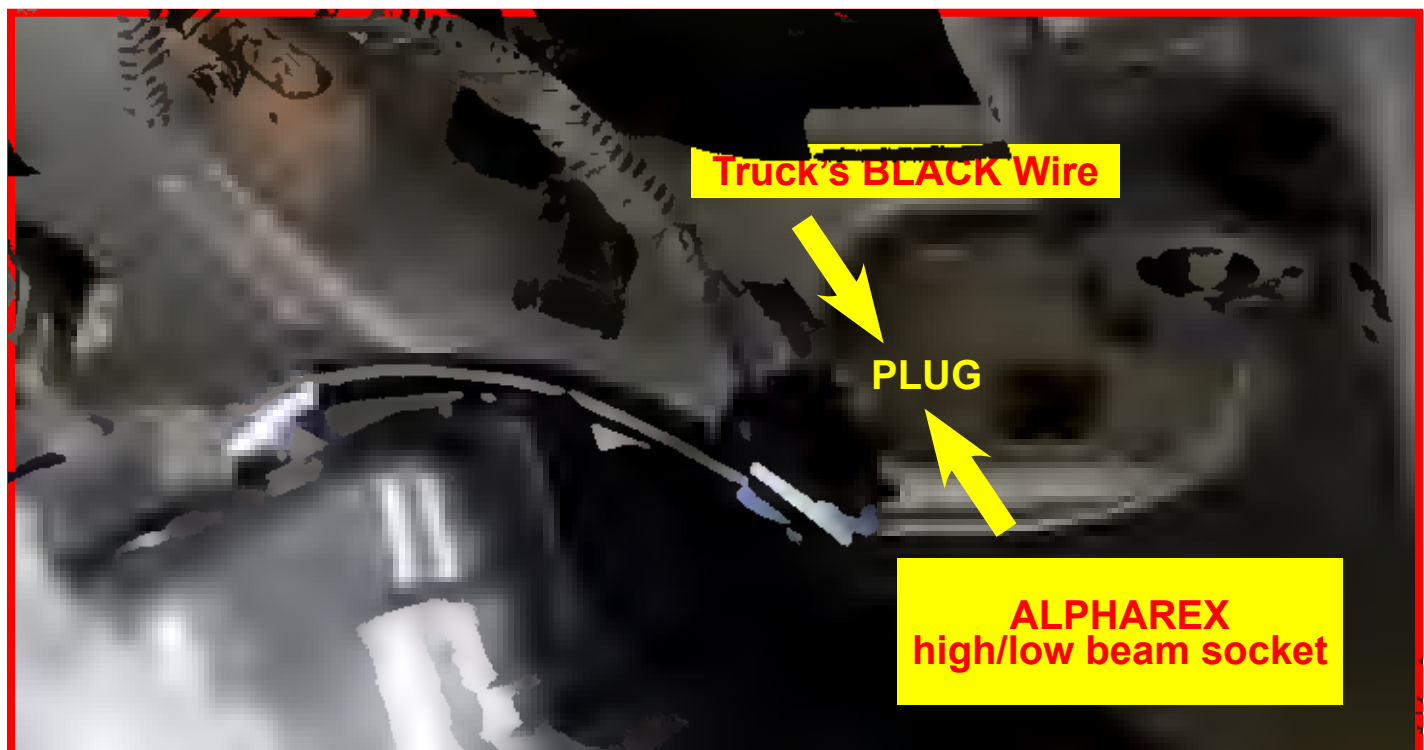
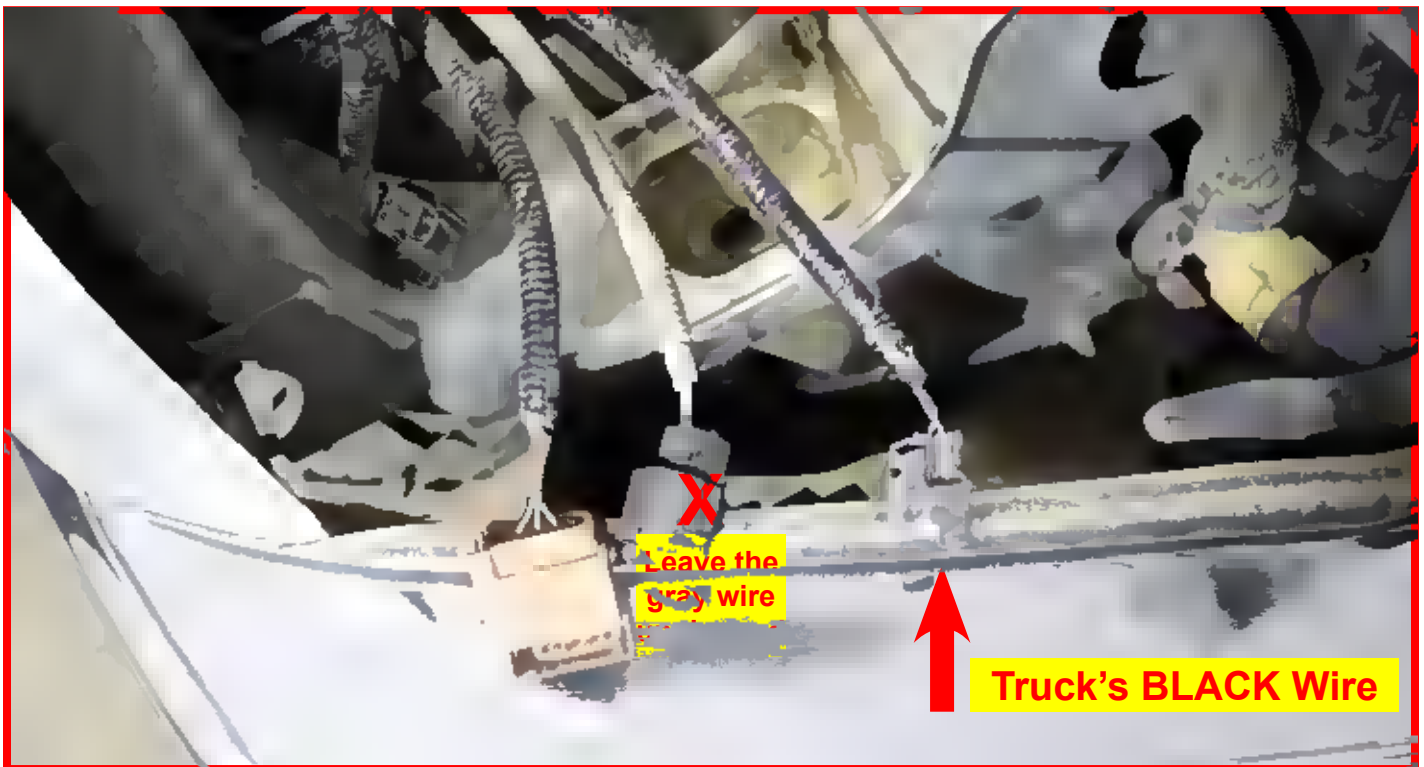


### STEP 3. PLUG AND INSTALL THE HEADLIGHTS

Connect the wires into the new ALPHAREX headlights. **DO NOT USE DIELECTRIC GREASE!**

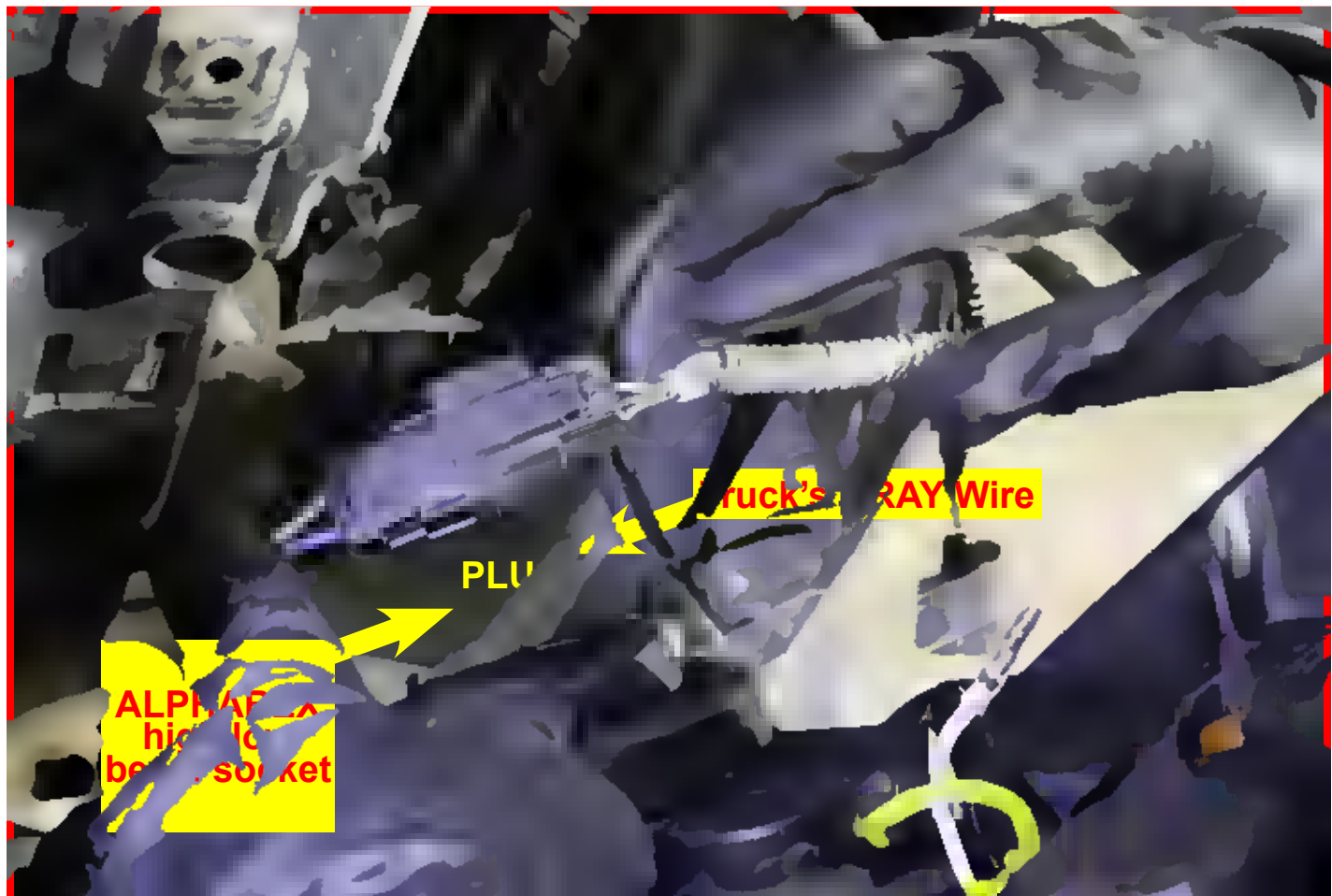
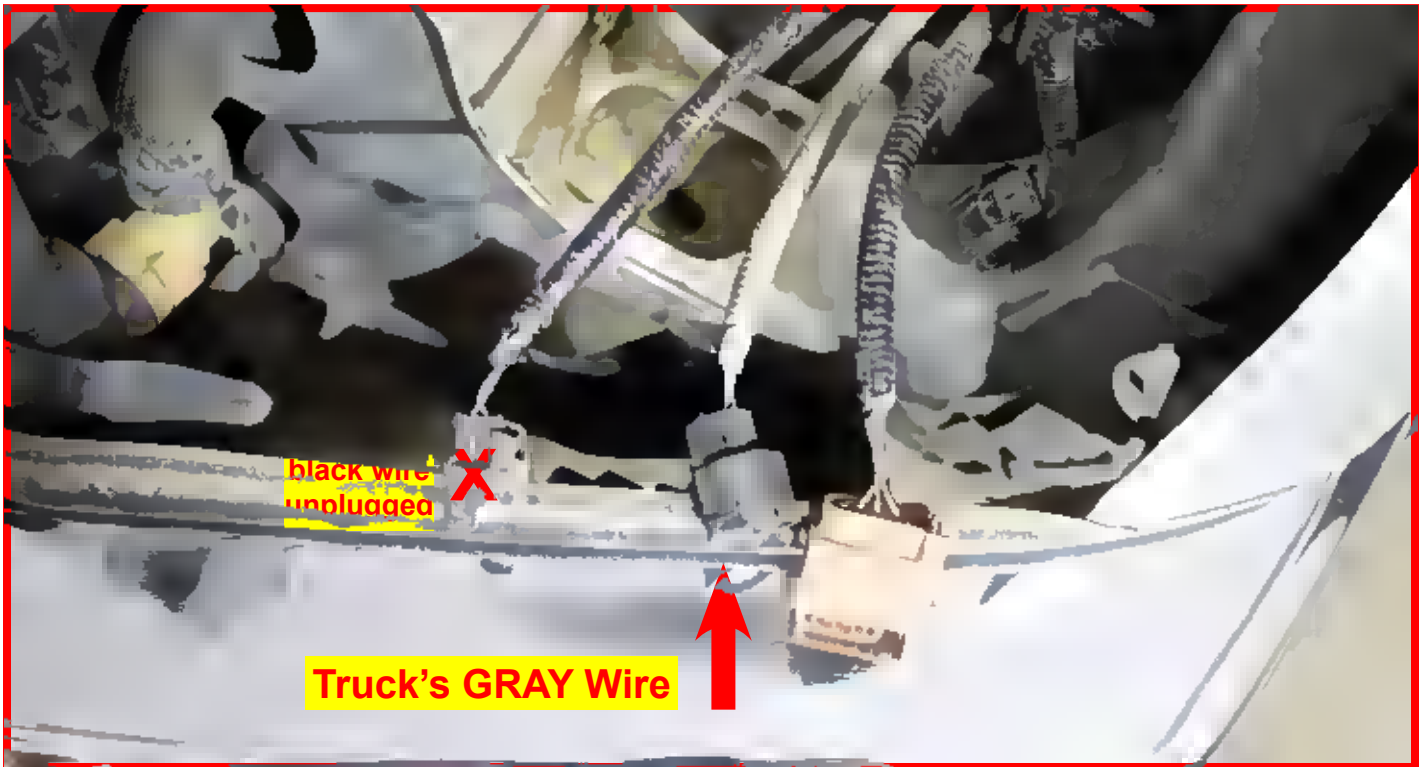
**Note: To ensure proper functionality of the new headlights, follow the steps starting from the passenger's side headlight.**

**Plug only the truck's BLACK wire into the new ALPHAREX Headlight's High/Low beam socket. Leave the gray wire unplugged.**



## FROM THE DRIVER'S SIDE HEADLIGHT

Only plug the truck's GRAY wire into the new ALPHAREX Headlight's High/Low beam socket, and leave the black wire unplugged.



Connect the turn signal and parking light wires into the new ALPHAREX headlight.

**DO NOT USE DIELECTRIC GREASE!**

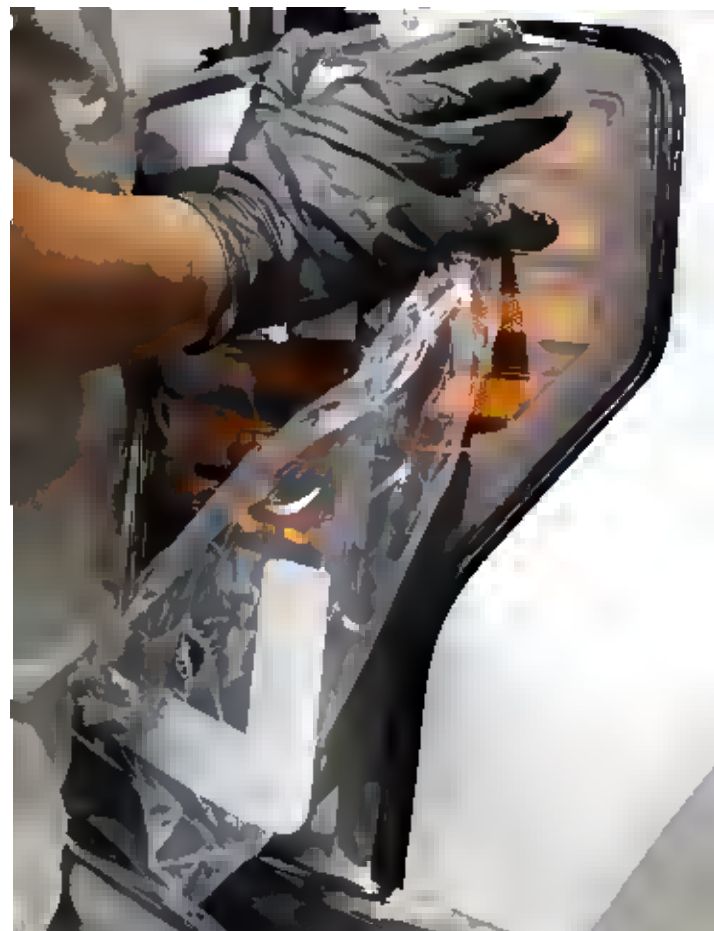


Secure the harness to the daytime running light connection on the back of the headlight.

Repeat the same steps for the other side of the headlight.

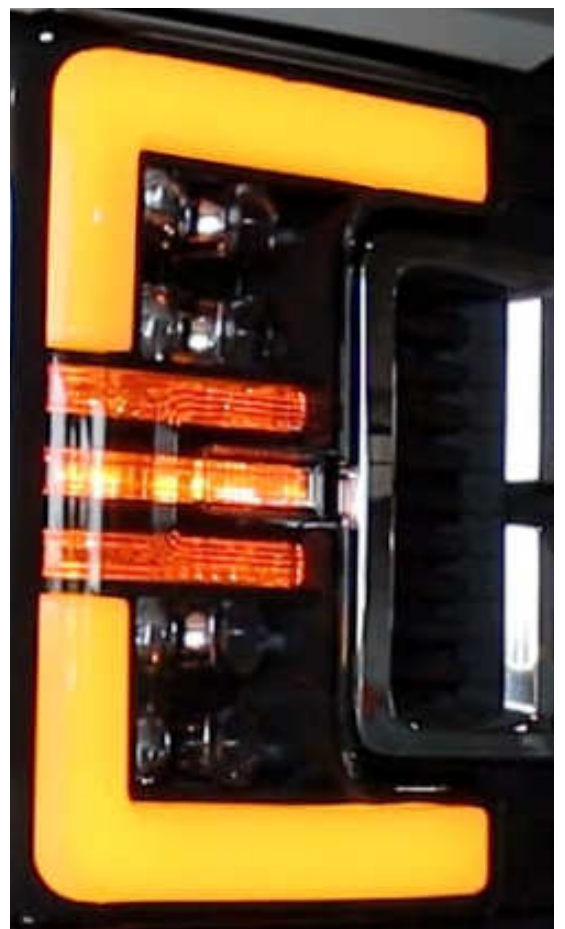


Conclude the installation by securing the headlight to the truck.  
Reverse the removal process to complete the installation.



## STEP 4. TEST THE HEADLIGHT FUNCTIONS

Test the functions of your ALPHAREX headlights to ensure everything works properly.



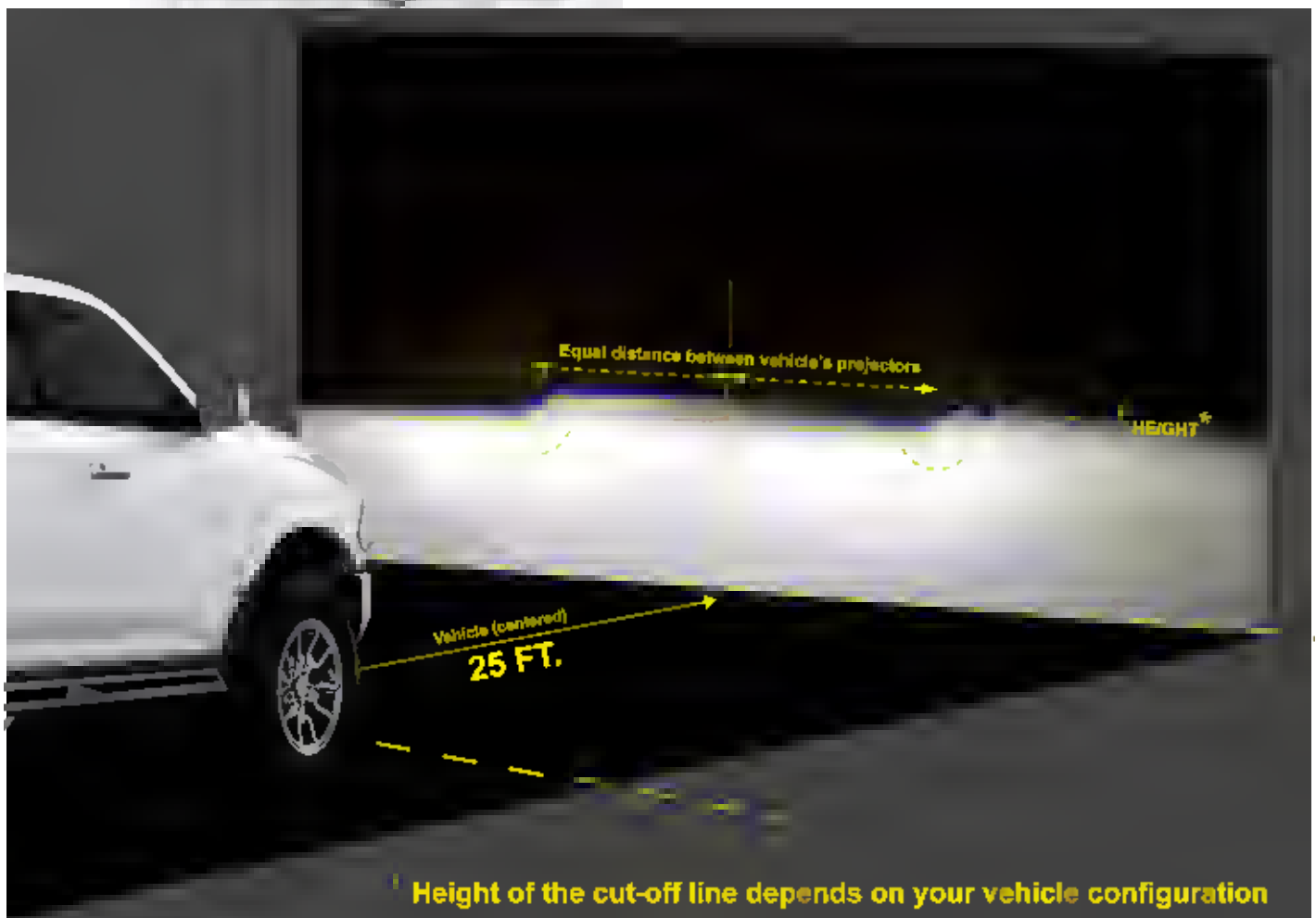
## STEP 5. ADJUST HEADLIGHT LEVEL

Once everything has been tested, aim your ALPHAREX headlights by parking 25ft from a wall and level the headlight evenly.

**Clockwise to lower the level**

**Counterclockwise to raise the level**

*Follow the same procedure for the other headlight.*



## STEP 6. COMPLETE INSTALLATION

Congratulations! You have completed the installation for **ALPHAREX 17-19 Ford Super Duty F250 | F350 | F450 | F550 HEADLIGHTS.**

