

How to Switch to Amber Daytime Running Light (DRL) for AlphaRex 15-20 Ford F150 / 17-20 F150 Raptor Headlights

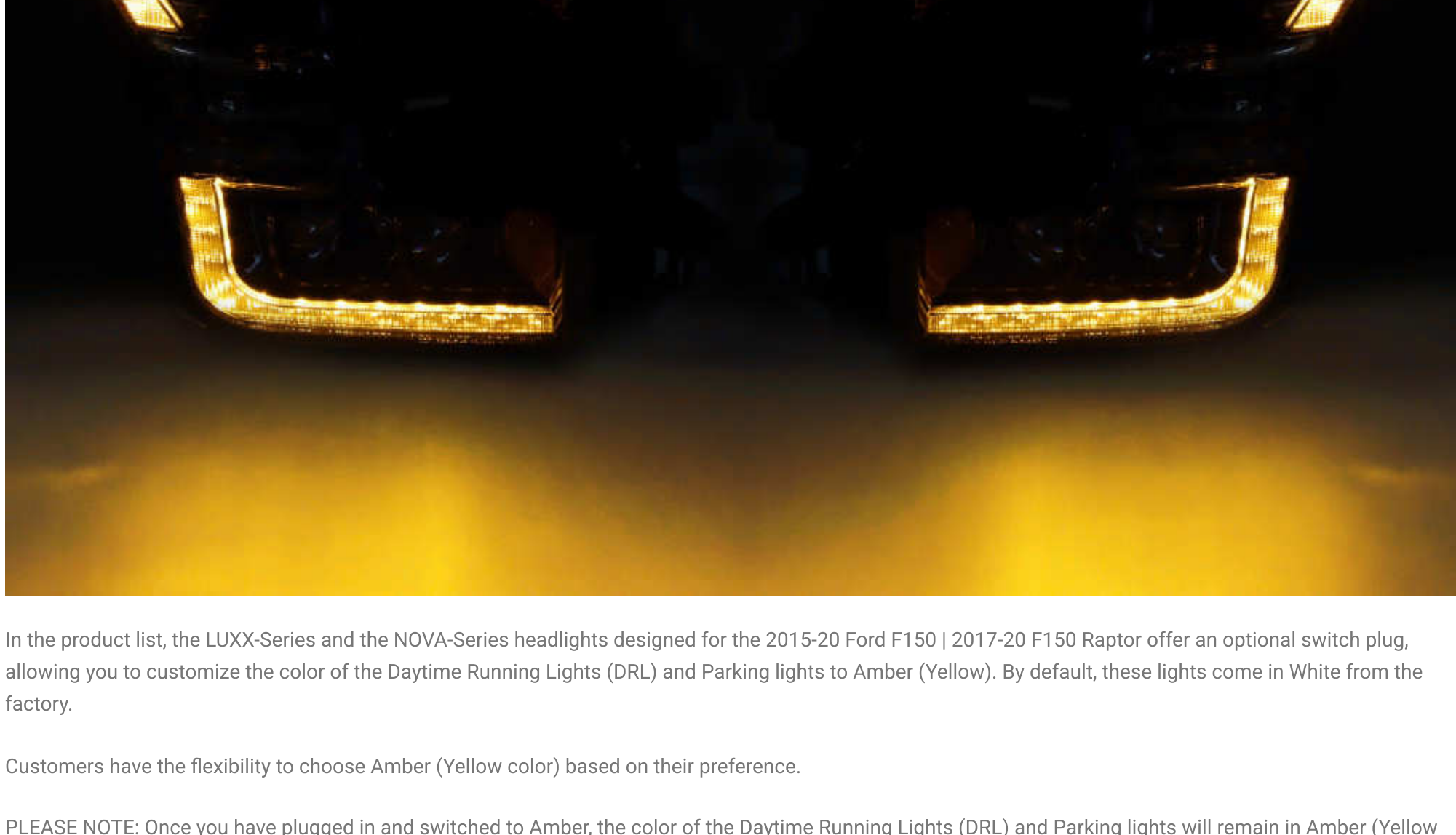
Table of Contents

- AMBER SWITCH PLUG LOCATION
- CONNECT THE AMBER SWITCH PLUGS
- COMPLETE THE SWITCH TO AMBER DRL & PARKING LIGHTS

Disclaimer: This installation article is a tutorial guide. By reading this article, you agree it is for reference only and AlphaRex USA and its distributors make no guarantee on the finished results. Under no circumstances whatsoever shall AlphaRex USA nor its distributors be liable for any damage, misuse or personal injuries. If you do not fully understand the installation procedure, it is highly recommended that you seek help from professional mechanics to do the installation.

This instruction guide is applicable to the following ALPHAREX headlight products:

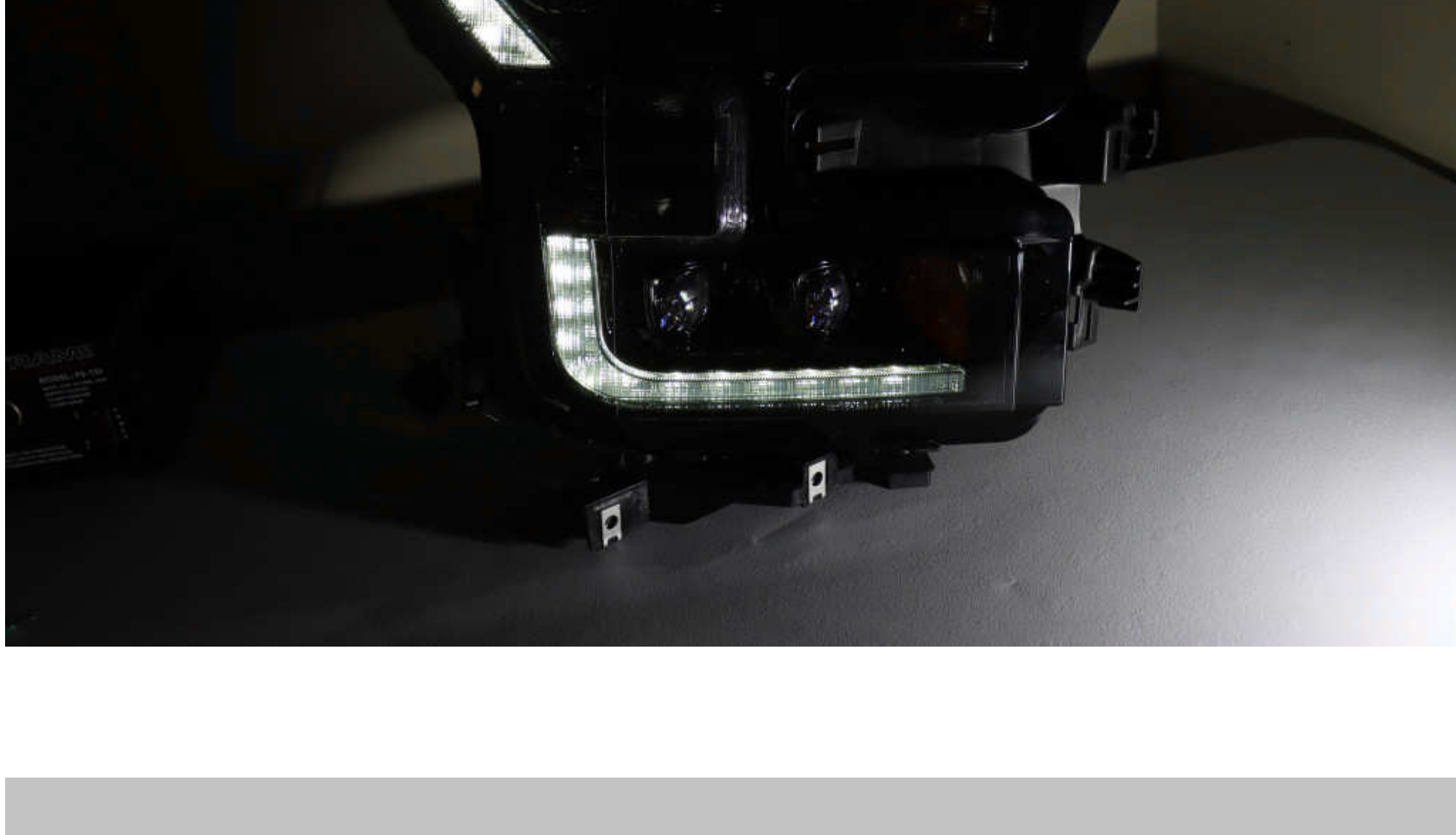
15-17 Ford F150 | 17-20 F150 Raptor NOVA-Series LED Projector Headlights (Chrome) / SKU: 880151
15-17 Ford F150 | 17-20 F150 Raptor NOVA-Series LED Projector Headlights (Black) / SKU: 880152
15-17 Ford F150 | 17-20 F150 Raptor NOVA-Series LED Projector Headlights (Alpha Black) / SKU: 880163
15-17 Ford F150 | 17-20 F150 Raptor LUXX-Series LED Projector Headlights (Black) / SKU: 880167
15-17 Ford F150 | 17-20 F150 Raptor LUXX-Series LED Projector Headlights (Jet Black) / SKU: 880168
18-20 Ford F150 NOVA-Series LED Projector Headlights (Alpha Black) / SKU: 880165
18-20 Ford F150 NOVA-Series LED Projector Headlights (Chrome) / SKU: 880181
18-20 Ford F150 NOVA-Series LED Projector Headlights (Black) / SKU: 880182
18-20 Ford F150 LUXX-Series LED Projector Headlights (Jet Black) / SKU: 880174
18-20 Ford F150 LUXX-Series LED Projector Headlights (Chrome) / SKU: 880175
18-20 Ford F150 LUXX-Series LED Projector Headlights (Black) / SKU: 880176
18-20 Ford F150 (MK II 14th Gen Style) NOVA-Series LED Projector Headlights (Black) / SKU: 880248
18-20 Ford F150 (MK II 14th Gen Style) NOVA-Series LED Projector Headlights (Alpha-Black) / SKU: 880249
18-20 Ford F150 (MK II 14th Gen Style) LUXX-Series LED Projector Headlights (Black) / SKU: 880250
18-20 Ford F150 (MK II 14th Gen Style) LUXX-Series LED Projector Headlights (Alpha-Black) / SKU: 880251



In the product list, the LUXX-Series and the NOVA-Series headlights designed for the 2015-20 Ford F150 | 2017-20 F150 Raptor offer an optional switch plug, allowing you to customize the color of the Daytime Running Lights (DRL) and Parking lights to Amber (Yellow). By default, these lights come in White from the factory.

Customers have the flexibility to choose Amber (Yellow color) based on their preference.

PLEASE NOTE: Once you have plugged in and switched to Amber, the color of the Daytime Running Lights (DRL) and Parking lights will remain in Amber (Yellow color).

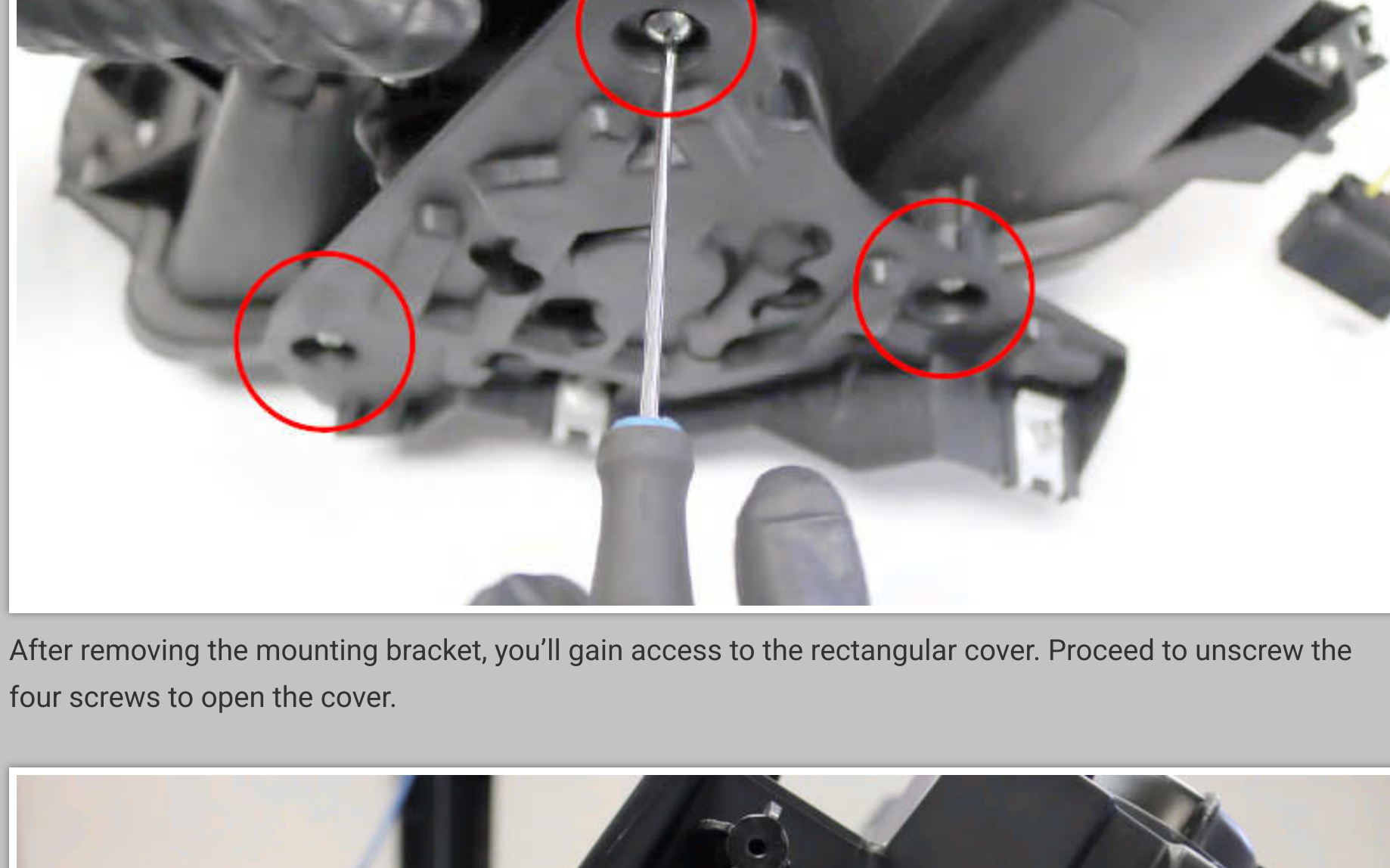


AMBER SWITCH PLUG LOCATION

To access the rear of each ALPHAREX headlight, unscrew the screws securing the mounting bracket.



Use a Phillips screwdriver to carefully unscrew the three screws securing the mounting bracket in place.



After removing the mounting bracket, you'll gain access to the rectangular cover. Proceed to unscrew the four screws to open the cover.



CONNECT THE AMBER SWITCH PLUGS

Find the amber DRL plugs on the circuit board. Connect each plug directly to its respective headlight, ensuring a secure and proper connection. **DO NOT USE DIELECTRIC GREASE!**



To finish, reverse the steps taken for removal to reassemble everything.



COMPLETE THE SWITCH TO AMBER DRL & PARKING LIGHTS

After plugging in the connection, reinstall the headlights onto the vehicle. Congratulations! You have successfully switched to Amber (Yellow color) Daytime Running Lights (DRL) and Parking lights.

