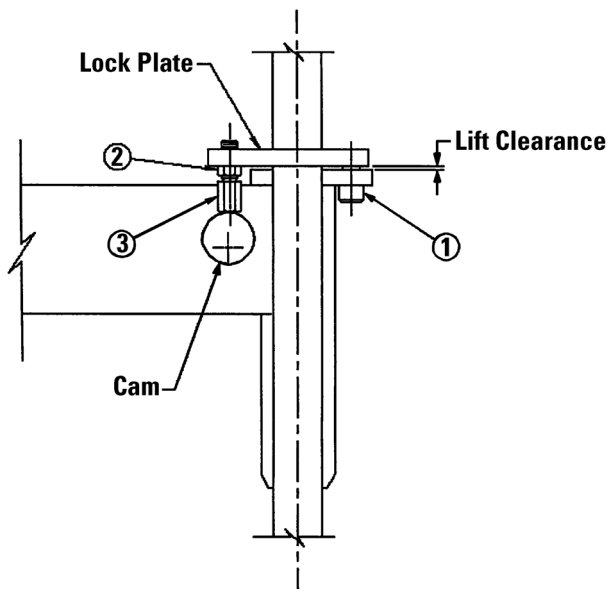
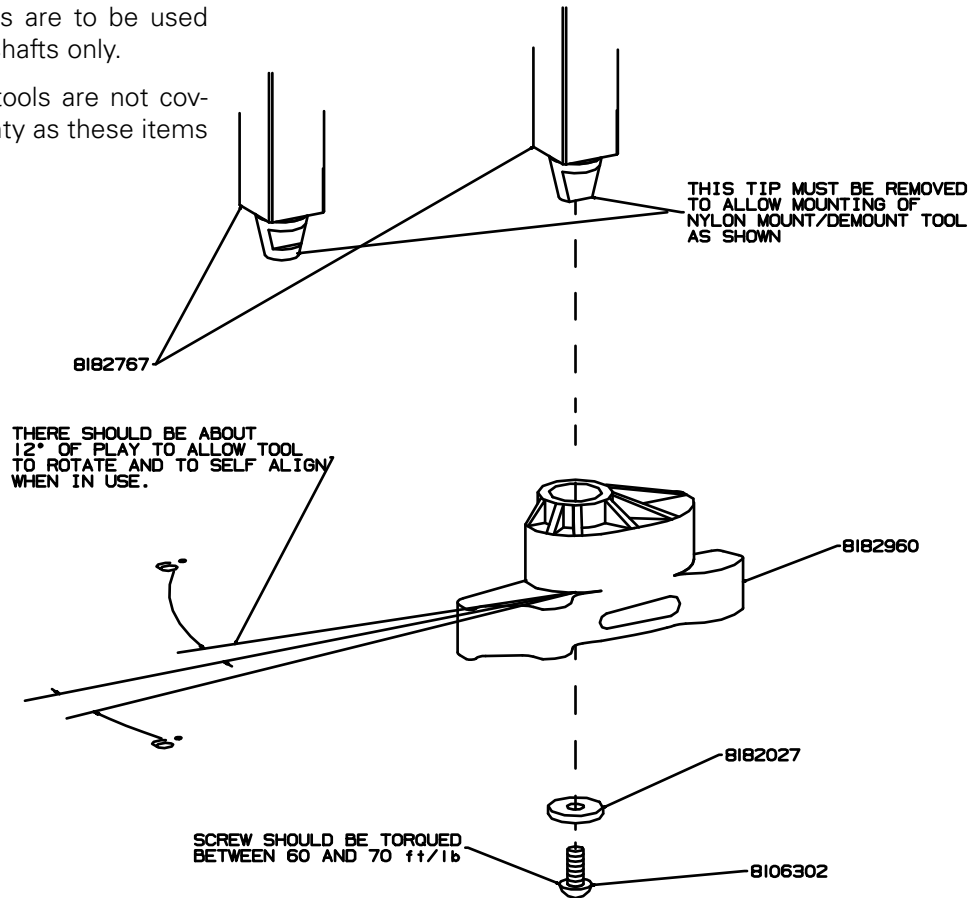




Duckhead™ Mount/Demount Tool Upgrade Kit 8183061

Note: These instructions are to be used on tapered vertical slide shafts only.

Nylon mount/demount tools are not covered under regular warranty as these items are expendable.



Mount/Demount Tool Head Adjustment

To Adjust Tool Head Lift

Shoulder screw (ref.1) sets the tool head lift for metal duckheads – no adjustment required. Place shim 85606345 on screw if using a plastic duckhead.

To Adjust Lock Tightness

With lock handle unlocked, loosen jam nut (ref. 2) and adjust pin (ref. 3) until a slight firmness is obtained, then tighten jam nut and check. Also recheck tool head lift at this time.