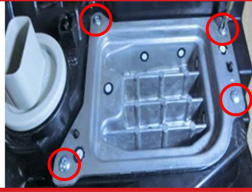


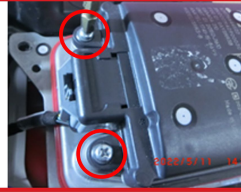
"DON'T GET LEFT IN THE DARK"

**2019-2022 FORD RANGER
TAIL LIGHTS
INSTALLATION GUIDE**

FOLLOW INSTRUCTIONS
ONLY IF YOUR VEHICLE IS
EQUIPPED WITH THE OEM BLIS



STEP 1
REMOVE 4 SCREWS HOLDING
BLIS MODULE ASSEMBLY TO
OEM LIGHT.



STEP 2
REMOVE 4 SCREWS HOLDING
BLIS MODULE TO COVER FOR
ACCESS TO BLIS CONNECTION.

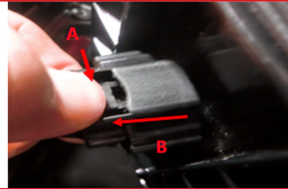


STEP 3
DISCONNECT BLIS MODULE
CONNECTOR BY PRESSING
TAB A AND PULLING AWAY
FROM CONNECTOR SHOWN IN
DIRECTION "B".

SET ALL PARTS REMOVED IN STEP 1 TO 3
ASIDE FOR LATER INSTALLATION.



STEP 4
REMOVE 4 SCREWS HOLDING
BLIS COVER ON NEW TAIL
LIGHT.



STEP 5
DISCONNECT THE CONNECTOR
HOLDING BLIS COVER ON NEW TAIL
LIGHT BY PRESSING TAB A AND
PULLING AWAY FROM CONNECTOR
SHOWN DIRECTION "B".

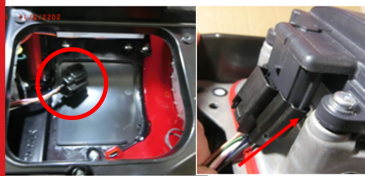
SET ALL PARTS REMOVED IN STEP 4 AND 5
ASIDE FOR LATER USE.



STEP 6
FASTEN SCREWS TO INSTALL
OEM BLIS SENSOR TO OEM
COVER FROM STEP 1.



STEP 7
INSTALL OEM BLIS MODULE
ASSEMBLY TO NEW TAIL LIGHT
IN THE FOLLOWING STEPS.



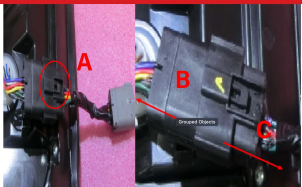
STEP 8
CONNECT CIRCLED
CONNECTOR FROM NEW TAIL
LIGHT TO BLIS MODULE
ASSEMBLY FROM STEP 4. PUSH
THE CONNECTOR IN UNTIL
HEARING "CLICK" SOUND.



STEP 9
FASTEN SCREWS TO INSTALL
BLIS MODULE ASSEMBLY TO
NEW TAIL LIGHT. MAKE SURE
BLIS ASSEMBLY IS FULLY
TIGHTENED DOWN TO NEW
TAIL LIGHT. INSTALL OEM TAIL LIGHT
HARNESS CONNECTION TO NEW
TAIL LIGHT.

**TEST ALL LIGHT FUNCTIONS
BEFORE DRIVING ON THE ROAD.**

**FOLLOW INSTRUCTIONS BELOW
(STEP 1-4) ONLY IF YOUR VEHICLE IS
NOT EQUIPPED WITH THE
OEM BLIS SYSTEM.**



STEP 1
DISCONNECT THE PRE-INSTALLED
CONNECTOR CIRCLED IN RED
COLOR ON NEW TAIL LIGHT BY
PRESSING TAB "A" AND PULLING
AWAY FROM CONNECTOR SHOWN
IN DIRECTION "B" AND "C".



STEP 2
LOCATE PROVIDED TAIL LIGHT
ADAPTOR HARNESS. CONNECT
TAIL LIGHT ADAPTOR HARNESS
AS SHOWN ABOVE. RED CIRCLE
TO RED CIRCLE, AND GREEN
CIRCLE TO GREEN CIRCLE FOR



STEP 3
CONNECT CONNECTOR FROM
TAIL LIGHT ADAPTOR HARNESS
TO OEM TAIL LIGHT HARNESS
CONNECTOR.



STEP 4
USE DOUBLE-SIDED TAPE ON
RESISTOR TO FIX AND SECURE
INTO VEHICLE INNER FENDER
WELL AND FINISH TAIL LIGHT
INSTALLATION. TEST ALL TAIL
LIGHT FUNCTIONS BEFORE
DRIVING ON THE ROAD.