

# Installation Instructions for IA10SAA1B

by APS Auto Parts Specialist Inc.

Application: For 2018-2020 JEEP WRANGLER JL 4 DOOR

Estimated Time: 1 to 2 hours

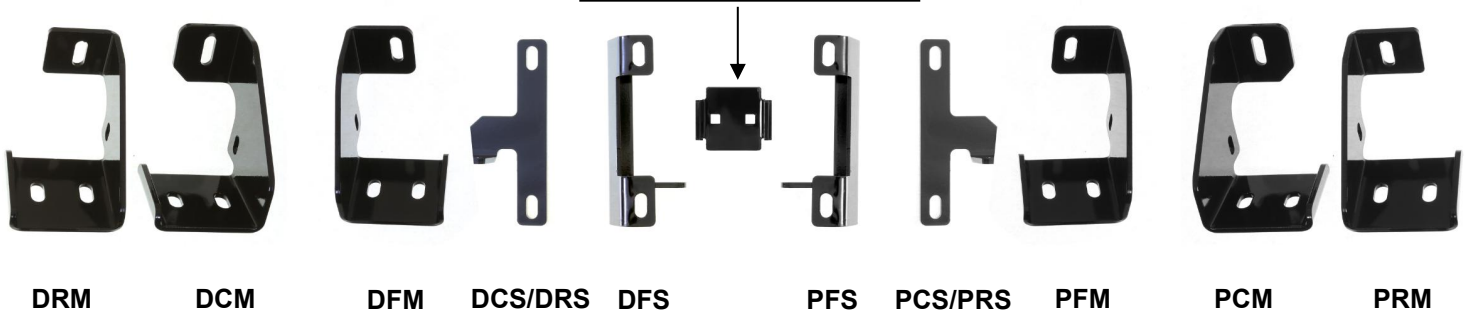


The instruction here is for your reference only. We strongly recommend the professional installer for best result. We are not responsible for any damage caused by the installation. Thank you for choosing our product!

**PARTS LIST:**

Item	QTY	Description	Item	QTY	Description
#1	2	Driver/ Passenger Side Bar	#13	18	M8 Large Flat Washers
#2	1	Driver Front Mounting Bracket (DFM)	#14	12	M8 Lock Washers
#3	1	Driver Center Mounting Bracket (DCM)	#15	12	M6X1-25 Hex Bolts
#4	1	Driver Rear Mounting Bracket (DRM)	#16	24	M6 Large Flat Washers
#5	1	Passenger Front Mounting Bracket (PFM)	#17	12	M6X1 Nylon Lock Nuts
#6	1	Passenger Center Mounting Bracket (PCM)	#18	6	M8X1.25 - 25mm Hex Bolts
#7	1	Passenger Rear Mounting Bracket (PRM)	#19	6	M8X1.25 Hex Nuts
#8	1	Driver Front Support Bracket (DFS)	#20	6	2-Hole Support Bracket
#9	1	Passenger Front Support Bracket (PFS)	#21	12	M10 Flat Washer
#10	2	Driver Center Support Bracket (DCS/DRS)	#22	12	M10 Lock Washer
#11	2	Passenger Center Support Bracket (PCSPRS)	#23	12	M10X1.5 Hex Nuts
#12	6	M8X1.25 - 35mm Hex Bolts	#24	12	M10X1.5-75 Carriage Bolts

2-Hole Support Bracket

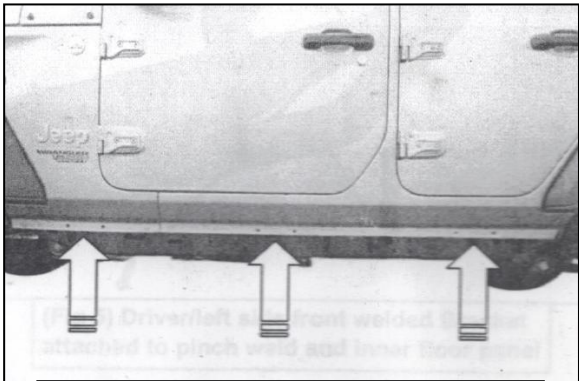


**PROCEDURE:**

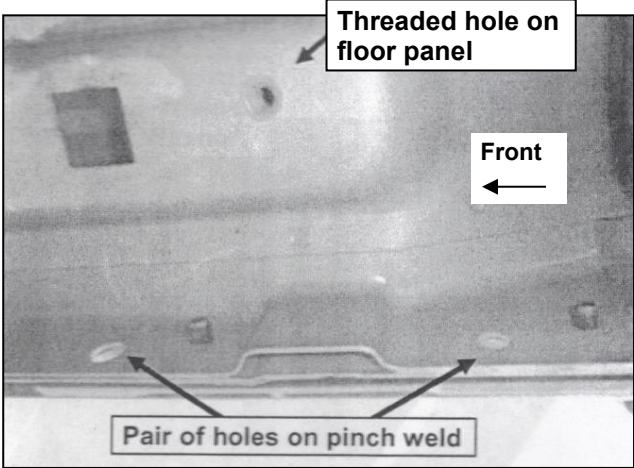
- REMOVE CONTENTS FROM BOX. VERIFY ALL PARTS ARE PRESENT. READ INSTRUCTIONS CAREFULLY. FACTORY INSTALLED OR AFTERMARKET "ROCK RAILS,"SIDE STEPS OR RUNNING BOARDS MUST BE REMOVED. ASSISTANCE IS HIGHLY RECOMMENDED.**
- Start installation on the Passenger side of the vehicle. Locate the (3)pairs of factory mounting holes along the pinch weld(**Figure 1**). The mounting brackets on the Side armor attach to the holes in the pinch weld and the small factory threaded hole directly behind the pinch weld(**Figure 2-4**).
- Install mounting brackets as shown(**Figure 5 -7**).
- Select the Passenger Side Bar. Slip (2) M10X1.5-75 Carriage Bolts into each 2-Hole Support Brackets ,and insert the 2-Hole support bracket into the Driver Side Bar.(**Fig 8**). Carefully position the Bar onto the (3) Mounting Brackets. **IMPORTANT: Do not slide the Bar on the Brackets or damage to the finish may result. Attach the Driver Side Bar to the Mounting Brackets with (2) M10 Hex Nuts,(2)M10 lock washers and (2)M10 flat washers, (Fig 9).** Do not tighten hardware.
- Level and adjust the Bar properly and tighten all hardware. **NOTE: Torque all M10 X1.5-75 Carriage Bolts to 22~25 lb-ft. Don't over tighten,or the aluminum square bars will be damaged by the brackets.**
- Repeat Step 2-5 for the other side installation. Installation completed!!! (**See Fig 10**)
- Do periodic inspections to the installation to make sure that all hardware is secure and tight. Products have a high quality finish that must be cared for like any other exposed finish on the vehicle. Protect the finish with a non-abrasive automotive wax, (e.g.Pure Carnauba ) on a regular basis. The use of any soap,

polish or wax that contains an abrasive is detrimental, as the compounds scratch the finish and open it to corrosion.

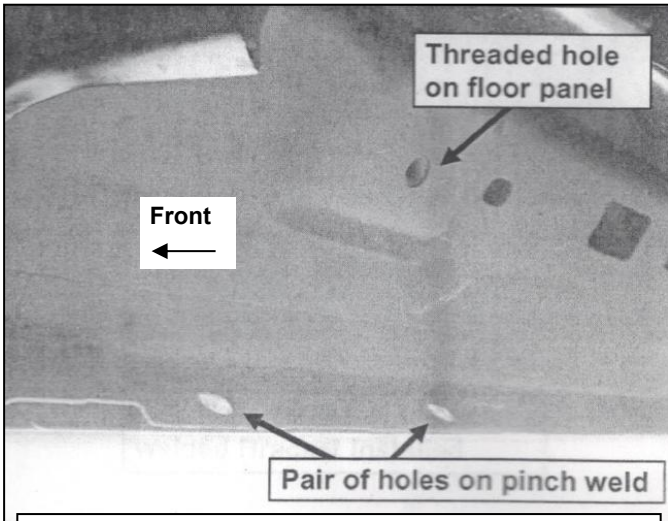
**Driver/Passenger Side Installation Pictured**



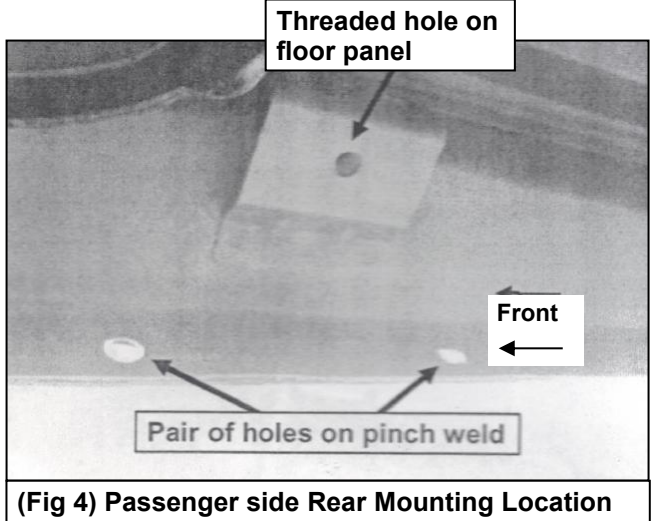
(Fig 1) Locate the (3) pairs of factory mounting holes



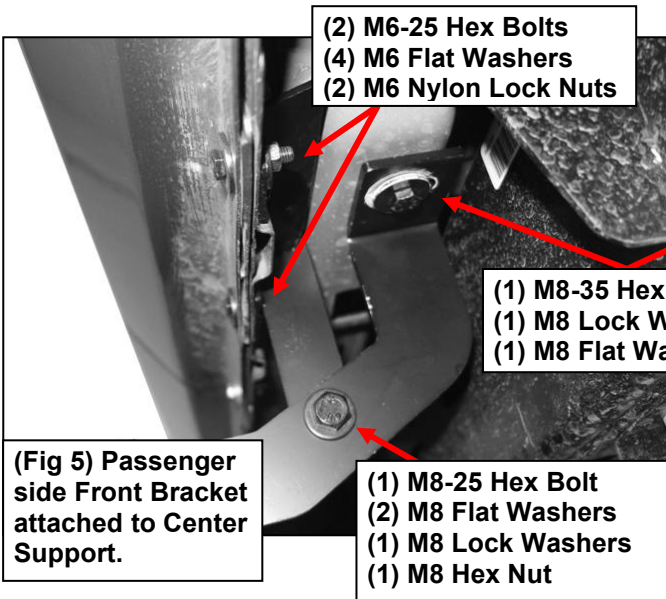
(Fig 2) Passenger side Front Mounting Location



(Fig 3) Passenger side Center Mounting Location



(Fig 4) Passenger side Rear Mounting Location

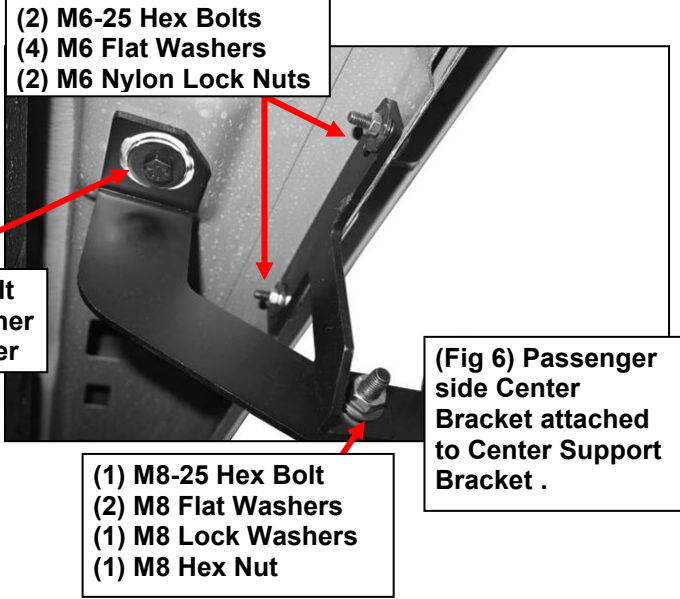


- (2) M6-25 Hex Bolts
- (4) M6 Flat Washers
- (2) M6 Nylon Lock Nuts

- (1) M8-35 Hex Bolt
- (1) M8 Lock Washer
- (1) M8 Flat Washer

(Fig 5) Passenger side Front Bracket attached to Center Support.

- (1) M8-25 Hex Bolt
- (2) M8 Flat Washers
- (1) M8 Lock Washers
- (1) M8 Hex Nut

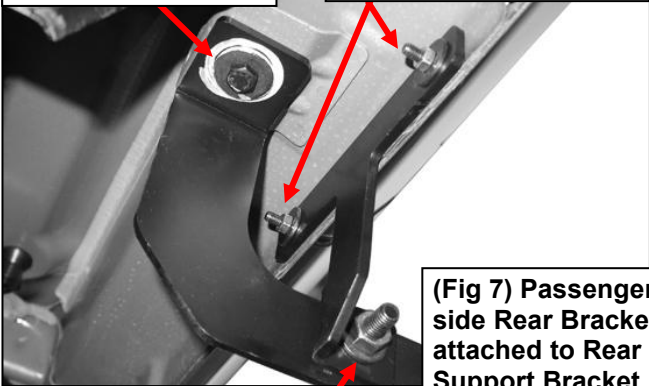


- (2) M6-25 Hex Bolts
- (4) M6 Flat Washers
- (2) M6 Nylon Lock Nuts

(Fig 6) Passenger side Center Bracket attached to Center Support Bracket .

- (1) M8-25 Hex Bolt
- (2) M8 Flat Washers
- (1) M8 Lock Washers
- (1) M8 Hex Nut

- (1) M8-35 Hex Bolt
- (1) M8 Lock Washer
- (1) M8 Flat Washer
- (2) M6-25 Hex Bolts
- (4) M6 Flat Washers
- (2) M6 Nylon Lock Nuts



(Fig 7) Passenger side Rear Bracket attached to Rear Support Bracket.

- (1) M8-25 Hex Bolt
- (2) M8 Flat Washers
- (1) M8 Lock Washers
- (1) M8 Hex Nut

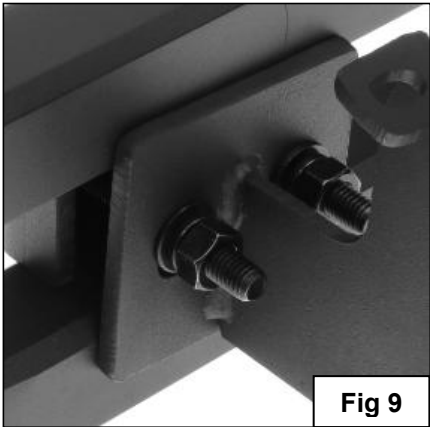


Fig 9



Fig 8



Complete Installation

Fig 10