

INSTALLATION MANUAL

216088

Level of Difficulty

Easy

Installation difficulty levels are based on time and effort involved and may vary depending on the installer level of expertise, condition of the vehicle and proper tools and equipment.

This is the second of two manuals required to complete this installation. The first manual is included with your mounting brackets.

Parts List

1	Driver / left SlimGrip™ running board
1	Passenger / right SlimGrip™ running board
2	Right end cap
2	Left end cap
8	Self-piercing phillips screw
8	Mounting plate
16	Hex bolt, M8
16	Flat washer, M8
16	Serrated flange nut, M8

Attachment hardware is supplied with the mounting brackets. Hardware quantities will vary depending on the vehicle application.

Tools Required

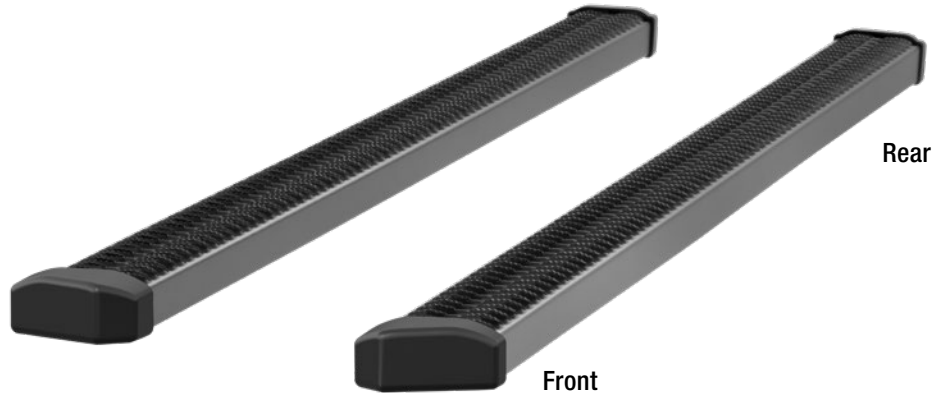
Ratchet set	Torque wrench
-------------	---------------

Torque Specifications

	Metric	SAE
	M6 bolt	3 ft-lbs.
	M8 bolt	7 ft-lbs.
	M10 bolt	16 ft-lbs.
	M12 bolt	28 ft-lbs.
	1/4" bolt	3 ft-lbs.
	5/16" bolt	7 ft-lbs.
	3/8" bolt	16 ft-lbs.
	7/16" bolt	20 ft-lbs.
	1/2" bolt	28 ft-lbs.

Use above torque setting unless otherwise noted

Product Photo



Notes and Maintenance

Before you begin installation, read all instructions thoroughly.

Proper tools will improve the quality of installation and reduce the time required.

To protect the product, wax after installing. Regular waxing is recommended to add a protective layer over the finish. Do not use any type of polish or wax that may contain abrasives that could damage the finish.

For polished, gloss and other smooth finishes, polish may be used to clear small scratches and scuffs on the finish.

Mild automotive detergent may be used to clean the product. Do not use dish detergent, abrasive cleaners, abrasive pads, wire brushes or other similar products that may damage the finish.

Refer to the table to the left when securing hardware during the installation process to help prevent damage to the product or vehicle.

Product Registration and Warranty

ARIES stands behind our products with industry-leading warranties. To get copies of the product warranties, register your purchase or provide feedback, visit: warranty.curtgroup.com/surveys

Step 1

Secure the end caps using self-piercing screws.

Slide the provided track mounting plates into the bottom of the SlimGrip™ board.

Note: The number of mounting brackets may vary based on application. Use one mounting plate per bracket.



Step 2

Carefully place the running board onto the mounting brackets.

Align the track mounting plates with the mounting brackets on the vehicle.



Step 3

Attach the track mounting plates to the mounting brackets using two black M8 hex bolts, hex nuts, lock washers and flat washers per bracket. Repeat for the remaining mounting brackets.

At this time, adjust the running board to the desired location.

With the running board in position, it is recommended to tighten all brackets to the vehicle first, followed by the running board connections.

For recommended torque specifications, refer to the table on page 1.



Step 4

Repeat steps 1 through 4 on the passenger side of the vehicle.

Congratulations on the installation of your new SlimGrip™ running boards.

With the running boards installed, periodic inspections should be performed to ensure all mounting hardware remains tight.

To protect your investment, see the 'Notes and Maintenance' section on the first page of this instruction manual.



INSTALLATION MANUAL

2055104

Level of Difficulty

Easy

This is the first of two manuals required to complete this installation. The second manual is included with your running boards / side steps.

Parts List

6	VersaTrac™ mounting bracket, universal
12	Clip nut, M8
12	Hex bolt, M8 - 1.25 x 30mm (S)
12	Flat washer, M8 (S)
12	Lock washer, M8 (S)
12	Hex bolt, M8 - 1.25 x 25mm (B)
12	Flat washer, M8 (B)
12	Lock washer, M8 (B)
12	Hex nut, M8 (B)

(S) = Silver hardware, (B) = Black hardware

Running boards / side steps sold separately

Tools Required

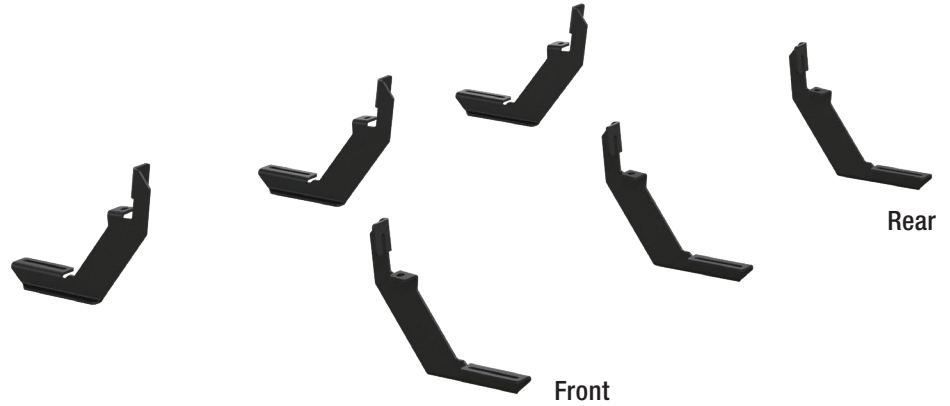
Ratchet	Socket set
Torque wrench	Level
Flathead screwdriver	--

Torque Specifications

	Metric	SAE
M6 bolt	3 ft.-lbs.	
M8 bolt	7 ft.-lbs.	
M10 bolt	16 ft.-lbs.	
M12 bolt	28 ft.-lbs.	
1/4" bolt	3 ft.-lbs.	
5/16" bolt	7 ft.-lbs.	
3/8" bolt	16 ft.-lbs.	
7/16" bolt	20 ft.-lbs.	
1/2" bolt	28 ft.-lbs.	

Use above torque setting unless otherwise noted

Product Photo



Notes and Maintenance

Before you begin installation, read all instructions thoroughly.

Proper tools will improve the quality of installation and reduce the time required.

Mild automotive detergent may be used to clean the product. Do not use dish detergent, abrasive cleaners, abrasive pads, wire brushes or other similar products that may damage the finish.

Refer to the table to the left when securing hardware during the installation process to help prevent damage to the product or vehicle.

Product Registration

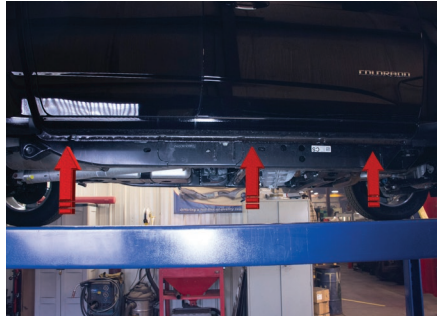
CURT Group stands behind our products with industry leading warranties. You can help us continue to improve our product line and help us understand your needs by registering your purchase by visiting:

warranty.curtgroup.com/surveys

At CURT Group, customer is king. We value your feedback and we use that information to make improvements on our products. Please, take a minute and let us know how we are doing.

Step 1

Starting on the driver side, locate the three mounting locations underneath the vehicle body.



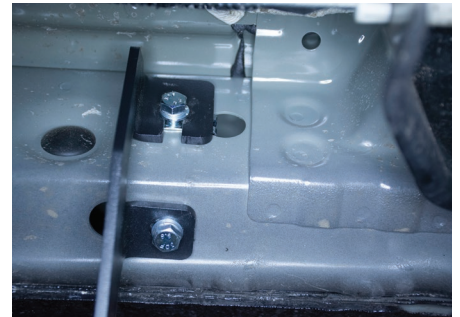
Step 2

Starting at the front driver-side mounting location, remove the two hole plugs.

Insert a clip-nut through the access hole and align it over the adjacent smaller hole. Insert a second clip-nut over the lower mounting tab.

Place the driver-side front mounting bracket onto the vehicle and secure with two silver M8 hex bolts, lock washers and flat washers.

Snug the hardware, but do not fully tighten.



Step 3

Repeat step 2 to install the middle and rear mounting brackets.

Repeat steps 1 through 3 on the passenger side of the vehicle.

Note: To complete the installation, refer to the manual included with your running boards / side steps.

