



INSTALLATION MANUAL

S223046-2

Level of Difficulty

Easy

Installation difficulty levels are based on time and effort involved and may vary depending on the installer level of expertise, condition of the vehicle and proper tools and equipment.

Parts List

Qty	Description
1	Driver / left side bar
1	Passenger / right side bar
2	Mounting bracket, front
4	Mounting bracket, universal
12	Hex bolt, M10 x 30mm
12	Flat washer, M10, small outer diameter
24	Lock washer, M10
12	Hex bolt, M10 x 25mm
12	Flat washer, M10, large outer diameter

Tools Required

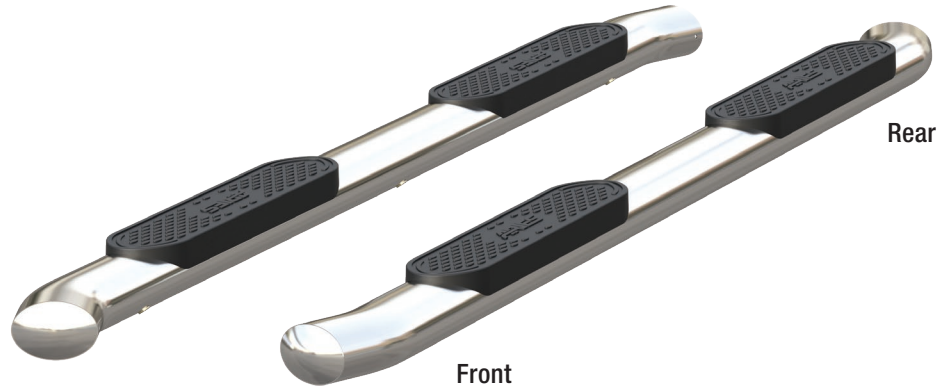
Ratchet	Level
Socket, 16mm	--

Torque Specifications*

	Metric	SAE
	M6 bolt	3 ft-lbs.
	M8 bolt	7 ft-lbs.
	M10 bolt	16 ft-lbs.
	M12 bolt	28 ft-lbs.
	1/4" bolt	3 ft-lbs.
	5/16" bolt	7 ft-lbs.
	3/8" bolt	16 ft-lbs.
	7/16" bolt	20 ft-lbs.
	1/2" bolt	28 ft-lbs.

*Above specifications are general guidelines. If purchasing hardware use the torque specifications provided with that hardware.

Product Photo



NOTICE

Before you begin installation, read all instructions thoroughly.

Proper tools will improve the quality of installation and reduce the time required.

Periodic inspection of your product should be performed to ensure all hardware and / or components remain secure.

To help prevent damage to the product or vehicle, refer to the specified torque specifications when securing hardware during the installation process.

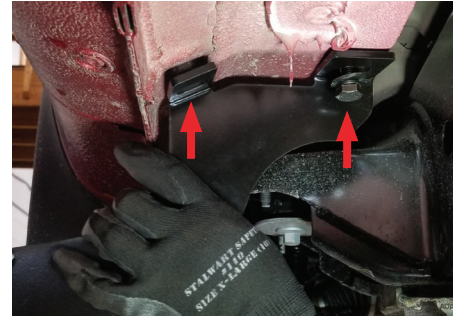
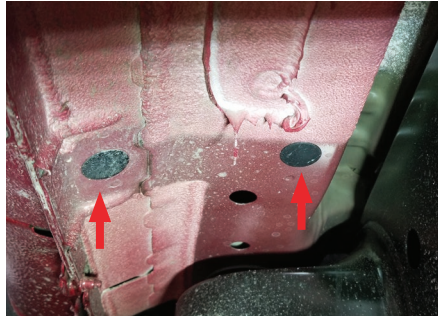
Maintenance

Mild automotive detergent may be used to clean the product. Do not use dish detergent, abrasive cleaners, abrasive pads, wire brushes or other similar products that may damage the finish.

Step 1

Starting at the front driver side mounting location, locate the threaded holes on the inside of the body panel and remove the rubber plugs.

Attach a front mounting bracket to the body panel using two M10 x 25mm hex bolts with a lock washer and large outside diameter flat washer.



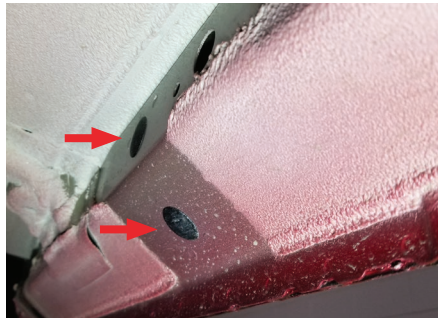
Step 2

Locate the threaded holes for the middle mounting location on the inside of the body panel and remove the rubber plugs.

Attach a universal mounting bracket to the body panel using two M10 x 25mm hex bolts with a lock and large outside diameter flat washer.

Snug the hardware, but do not fully tighten.

Repeat for the rear mounting location.



Step 3

Place the side bar onto the mounting brackets and align the mounting points.

Note: If the holes on the side bar do not match up with the brackets, ensure all brackets have been installed in the correct locations and the correct side bar is being used.



Step 4

Secure the side bar to the brackets using an M10 x 30mm hex bolt, lock washer and small outside diameter flat washer at each mounting location.

Snug the hardware, but do not fully tighten.



Step 5

Adjust and level the side bar.

With the side bar in position, it is recommended to tighten all brackets to the vehicle first, followed by the side bar connections.

Repeat steps 1 through 5 on the passenger side of the vehicle.

Congratulations on the installation of your new ARIES 4" oval side bars.

With the side bars installed, periodic inspections should be performed to ensure all mounting hardware remains tight.

To protect your investment, see the 'Maintenance' section on the first page of this instruction manual.

