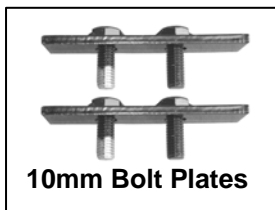




INSTALLATION INSTRUCTIONS
GRILLE GUARD
04-06 TOYOTA TUNDRA DOUBLE CAB
PART #2053

PARTS LIST:

1	Grille Guard	2	10-1.50mm x 25mm Hex Head Bolts
1	Driver/Left Mounting Bracket	2	10-1.50mm x 25mm Button Head Bolts
1	Driver/Left Top Bracket	8	10.4mm ID x 21mm OD x 1.7mm Flat Washers
1	Passenger/Right Mounting Bracket	8	10mm Nylock Nuts
1	Passenger/Right Top Bracket	6	12-1.75mm x 30mm Hex Head Bolts
2	10mm x 20mm Double Bolt Plate	6	12mm Nylock Nuts
2	Top Support "L" Brackets	12	12.5mm ID x 30.1mm OD x 3.1mm Flat Washers



PROCEDURE:

1. REMOVE CONTENTS FROM BOX. VERIFY ALL PARTS ARE PRESENT. READ INSTRUCTIONS CAREFULLY BEFORE STARTING INSTALLATION.
2. Starting on the driver side of the vehicle, remove factory tie downs (**Figure 1**).
NOTE: Factory tie downs can be re-install in conjunction with the Grille Guard if desired.
3. Partially attach driver side Mounting Bracket to frame rail using factory tie down bolts (**Figure 2**).
NOTE: If you are installing tie downs back to the vehicle, mount them over Mounting Bracket.
4. Repeat steps 2 & 3 for passenger side Mounting Bracket.
5. Open and lift hood, locate the two inside (rear) factory holes in the driver side head light housing mounting support (**Figure 3**). These are located on each side of the grille shell cavity.
6. Insert one of the 10mm Double Bolt Plates from the bottom of the head light housing mounting support and oriented it to the two inside (rear) factory holes, so bolts come through towards inside of the vehicle (**Figure 4**).
7. With the 90° degree bend to the bottom, attach one of the Top Support “L” Brackets to already inserted 10mm Double Bolt Plate using the included (2) 10mm Nylock Nut and (2) 10mm Flat Washers (**Figure 5**). Fully tighten at this time.
8. Partially attach driver side Top Bracket to Top Support “L” Bracket using the included (1) 10mm Hex Head Bolt, (1) 10mm Nylock Nut, and (2) 10mm Flat Washers (**Figure 6**).
9. Repeat steps 5-8 for passenger side Top Bracket.
10. With help position Grille Guard on the outside of Mounting Brackets. Use the included (6) 12mm x 30mm Hex Head Bolts, (6) 12mm Nylock Nuts, and (6) 12mm Flat Washers to attach Grille Guard to Mounting Brackets (**Figure 7**). Do not tighten at this time.
11. Attach Grille Guard to Top Brackets using the included (2) 10mm x 25mm Button Head Bolts, (2) 10mm Nylock Nuts, and (2) 10mm Flat Washers (**Figure 8**).
12. Adjust Grille Guard properly; and then tighten all hardware at this time.
13. Do periodic inspections to the installation to make sure that all hardware is secure and tight.

To protect your investment, wax this product after installing. Regular waxing is recommended to add a protective layer over the finish. Do not use any type of polish or wax that may contain abrasives that could damage the finish.

For stainless steel: Aluminum polish may be used to polish small scratches and scuffs on the finish. Mild soap may be used also to clean the Grille Guard.

For gloss black finishes: Mild soap may be used to clean the Grille Guard.

(Driver Side Installation Shown)

