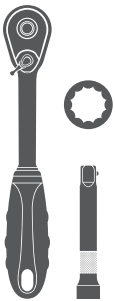


### Parts List

1	<a href="#">Driver / left, running board</a>
1	Passenger / right, running board
2	Mounting bracket, front
2	Mounting bracket, middle
2	Mounting bracket, rear
24	Hex head bolt, 8mm
24	Flat washer, 8mm
24	Lock washer, 8mm
12	Hex nut, 8mm

### Tools Required

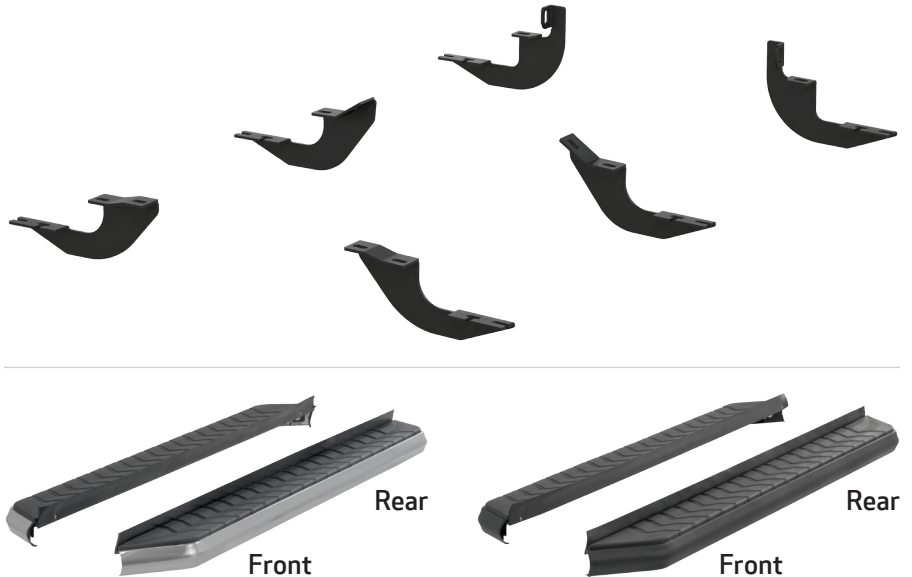
Ratchet	Socket, 13mm
Extension	



### Level of Difficulty

Easy

### Product Image



### Notes and Maintenance

Before you begin installation, read all instructions thoroughly.

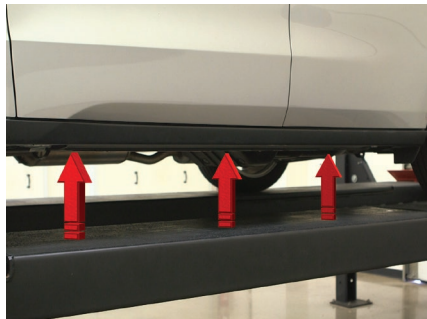
Proper tools will improve the quality of installation and reduce the time required.

For stainless steel, polish may be used to clear small scratches and scuffs on the finish. Mild soap may be used also to clean the product.

For black finishes, mild soap may be used to clean the product.

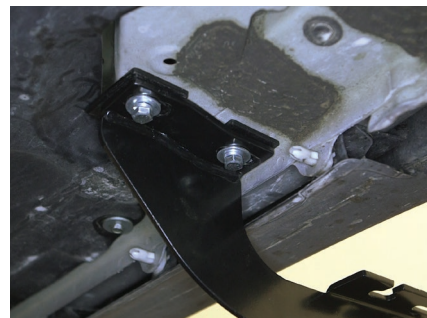
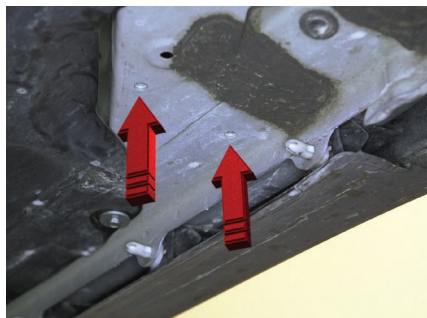
### Step 1

Starting on the driver-side, locate the three mounting locations and the front bracket for the driver side.



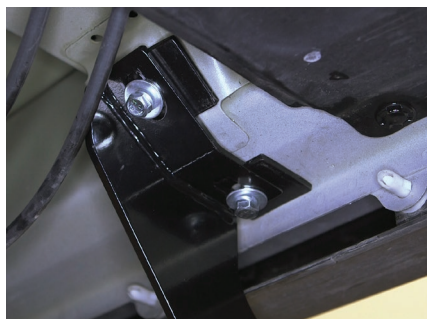
### Step 2

Locate the front two threaded mounting locations. Place the front bracket up to the vehicle and secure it using two 8mm hex bolts, two 8mm lock washers and two 8mm flat washers.



### Step 3

Repeat step 2 to install the middle and rear brackets over the mounting hole locations from step 1.

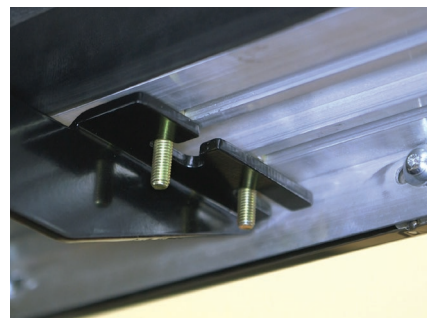


### Step 4

Remove the flat washers, lock washers and hex nuts from the running board.

Carefully place the running board onto the mounting brackets.

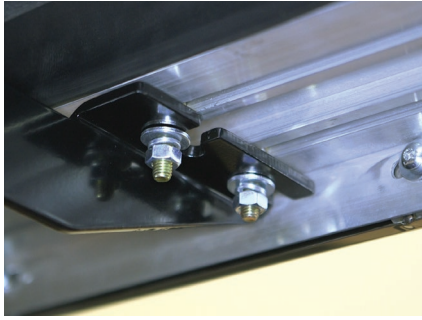
Slide each hex bolt into the appropriate slot on the mounting bracket.



### Step 5

Attach the running board to the brackets using six 8mm lock washers, six 8mm flat washers and six 8mm nuts.

Snug the hardware, but do not fully tighten.



### Step 6

Adjust the running board, centering it between the front and rear wheel wells.

With the running board in position, it is recommended that all brackets first be tightened to the vehicle, followed by the running board connections.



### Step 7

Repeat steps 1 through 6 on the passenger side of the vehicle.

Congratulations on the installation of your brand new ARIES AeroTread™ running boards.

With the running boards installed, periodic inspections should be performed to ensure all mounting hardware remains tight.

To protect your investment, see the 'Notes and Maintenance' section on the first page of this instruction manual.

