

Parts List

1	Driver / left running board
1	Passenger / right running board
2	Mounting bracket, front
2	Mounting bracket, middle
2	Mounting bracket, rear
2	Hanger bracket, middle
2	Hanger bracket, rear
8	Hex bolt, 8mm
16	Flat washer, 8mm
8	Lock washer, 8mm
8	Hex nut, 8mm
10	T-bolt, 60mm tab
10	Flat washer, 10mm
10	Lock washer, 10mm
10	Hex nut, 10mm
10	Bolt retainer, plastic

Additional Hardware*

12	Hex bolt, 8mm
12	Flat washer, 8mm
12	Lock washer, 8mm
12	Hex nut, 8mm

* Running boards are supplied with additional hardware. Quantities listed are in addition to the standard supplied hardware.

Tools Required

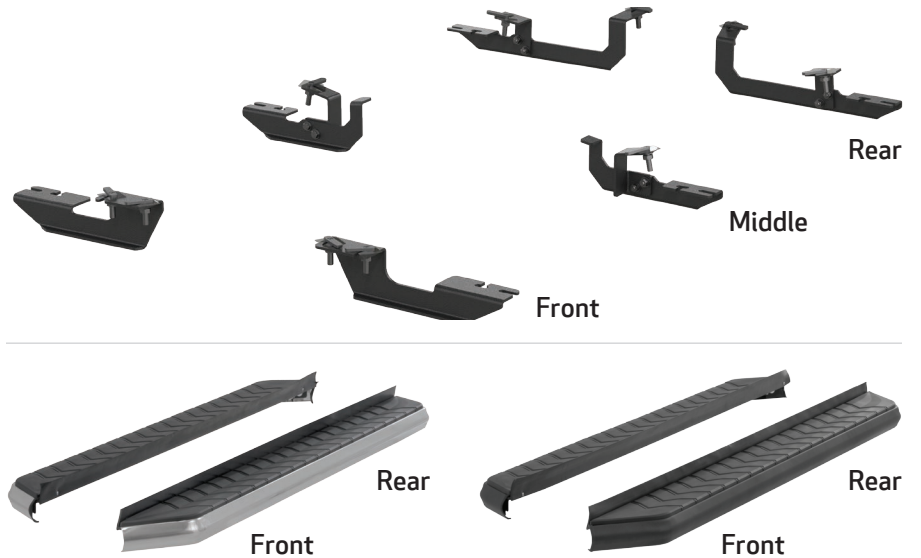
Ratchet	Socket, 10mm
Torque wrench	Socket, 13mm
Wrench, 13mm	Utility knife
Paint marker	Level



Level of Difficulty

Easy

Product Image



Notes and Maintenance

Before you begin installation, read all instructions thoroughly.

Proper tools will improve the quality of installation and reduce the time required.

For stainless steel, polish may be used to clear small scratches and scuffs on the finish. Mild soap may be used also to clean the product.

For black finishes, mild soap may be used to clean the product.

Step 1

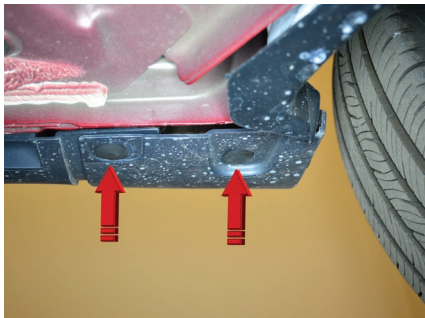
Starting on the driver side, locate the three mounting locations underneath the vehicle.

Note: Each bracket is specific to a mounting location and is stamped accordingly.



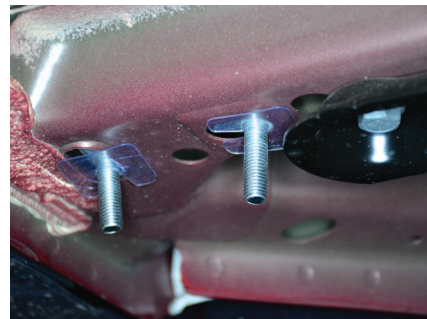
Step 2

Locate and remove the fasteners along the edge of the driver-side of the vehicle.



Step 3

Locate the two driver-side front mounting points. Insert a 60mm T-bolt plate into each opening. Slide a plastic bolt retainer over the thread of the bolt to hold the bolt in place.



Step 4

Place the driver-side front mounting bracket onto the vehicle and secure with a 10mm flat washer, 10mm lock washer and 10mm hex nut on each bolt plate.

Snug the hardware, but do not fully tighten.



Step 5

Locate the driver-side middle mounting point. Insert a 60mm T-bolt plate into the opening. Slide a plastic bolt retainer over the thread of the bolt to hold the bolt in place.

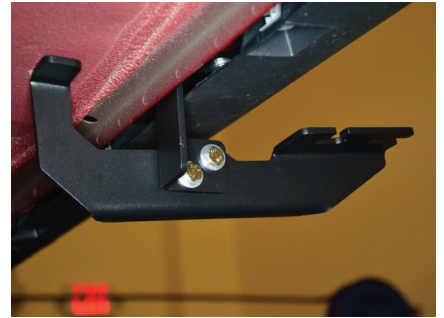


Step 6

Place the middle hanger bracket onto the vehicle and secure with a 10mm flat washer, 10mm lock washer and 10mm hex nut.

Secure the middle mounting bracket to the hanger bracket by inserting an 8mm hex bolt and 8mm flat washer through the outside of the hanger bracket and securing with an 8mm flat washer, 8mm lock washer and 8mm hex nut on the inside of the bracket.

Snug the hardware, but do not fully tighten. Repeat this process for the remaining mounting point.



Step 7

Locate and remove the rear plastic cover.



Step 8

Locate the driver-side rear mounting point in the rocker panel. Insert a 60mm T-bolt plate into the opening. Slide a plastic bolt retainer over the thread of the bolt to hold the bolt in place.

Place the rear hanger bracket onto the vehicle and secure with a 10mm flat washer, 10mm lock washer and 10mm hex nut.

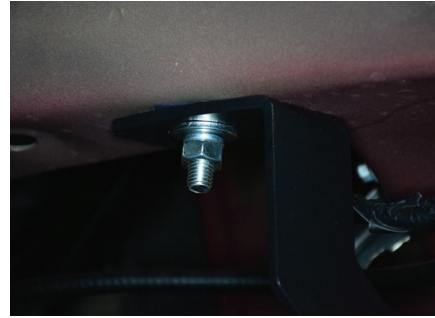
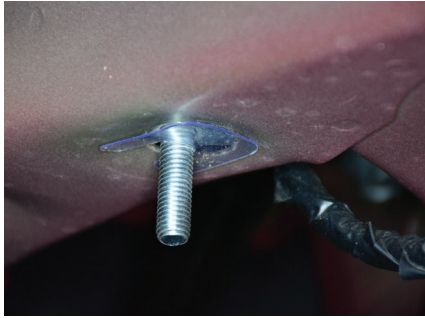


Step 9

Locate the driver-side rear mounting point. Insert a 60mm T-bolt plate into the opening. Slide a plastic bolt retainer over the thread of the bolt to hold the bolt in place.

Place the rear mounting bracket onto the vehicle and secure with a 10mm flat washer, 10mm lock washer and 10mm hex nut.

Snug the hardware, but do not fully tighten.



Step 10

Secure the rear mounting bracket to the hanger bracket by inserting an 8mm hex bolt and 8mm flat washer through the outside of the hanger bracket and securing with an 8mm flat washer, 8mm lock washer and 8mm hex nut on the inside of the bracket.

Snug the hardware, but do not fully tighten.



Step 11

To reinstall the rear plastic cover, hold the cover up to the rear mounting bracket and mark the plastic cover using a paint marker.

With the plastic cover marked, lay it down on a flat surface and use a utility knife to cut out the marked area.

Reinstall the rear plastic cover using the previously removed factory hardware.



Step 12

Remove the 8mm nuts, 8mm lock washers and 8mm flat washers from the running board.

Place the running board onto the brackets and align the 8mm bolts with the slots in the brackets on the vehicle.



Step 13

Attach the running board to the brackets using six 8mm bolts, lock washers, flat washers and nuts.

Snug the hardware, but do not fully tighten.



Step 14

Adjust and level the running board, centering it between the front and rear wheel wells.

With the running board in position, it is recommended to tighten all brackets to the vehicle first, followed by the running board connections.



Step 15

Repeat steps 1 through 14 on the passenger side of the vehicle.

Congratulations on the installation of your brand new ARIES AeroTread™ running boards.

With the running boards installed, periodic inspections should be performed to ensure all mounting hardware remains tight.

To protect your investment, see the 'Notes and Maintenance' section on the first page of this instruction manual.

