



Astro Pneumatic Tool Company

BETTER TOOLS FOR BETTER BUSINESS



DIE GRINDER



Model No. **218**
**1/8" PENCIL TYPE
DIE GRINDER - 56,000RPM**

- Designed for high speed porting and finishing of small parts
- Precision balance and remote exhaust



Model No. **T20AH**
**1/4" 90° ANGLE DIE GRINDER
WITH SAFETY LEVER -
FRONT EXHAUST - 20,000RPM**

- Unmatched lifespan for high production settings
- Compact and lightweight



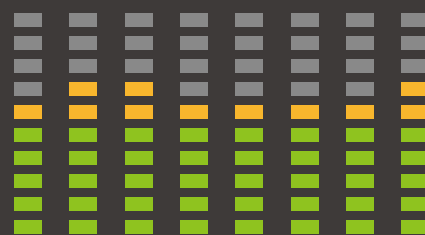
Model No. **T210**
**1/4" MEDIUM DIE GRINDER
WITH SAFETY LEVER - REAR
EXHAUST - JAPAN BEARINGS
- 22,000RPM**

- Lever throttle for feathering control
- Maximum durability 1/2HP motor

QL SERIES

UP TO 15 DB LESS THAN INDUSTRY STANDARD

Noise Level **80dB**



Model No. **206QL** **.35 HP**

QUICK-LOCK 1/4" STRAIGHT DIE GRINDER

- Compact and lightweight
- Maximum noise suppression, only 78dB



Model No. **216QL** **3/4 HP**

3/4HP QUICK-LOCK 1/4" QUIET DIE GRINDER

- Industrial power levels in the palm of your hand
- Quick RPM adjustable dial under locking lever throttle



Model No. **205QL** **1/3 HP**

QUICK-LOCK 1/4" 90° ANGLE DIE GRINDER

- Composite handle eliminates vibration, cold temperatures and provides a firm grip
- Lever throttle for feathering control



Model No. **210QL** **1/2 HP**

HD QUICK-LOCK 1/4" SWIVEL THROTTLE 90° DIE GRINDER

- 360 degree swivel trigger assembly for close quarters customization
- Heavy-Duty construction and the power and gearing for heavy-duty use

**EASY CHANGE SYSTEM
REQUIRES ONLY ONE WRENCH**



DIE GRINDER & BURR KITS

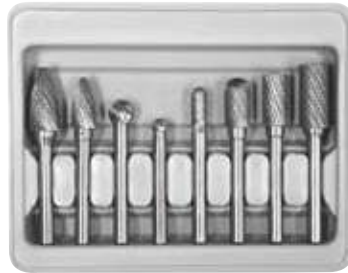
AIR TOOLS



Model No. **219**

ONYX 3PC. DIE GRINDER KIT W/ 1/4" 90° ANGLE AND STRAIGHT DIE GRINDER W/ 8PC. DOUBLE CUT CARBIDE ROTARY BURR SET

- Increased motor size provides more power
- Over-molded grip for comfort and insulation



Model No. **2181**

8PC. DOUBLE CUT CARBIDE ROTARY BURR SET 1/4" SHANK

- Solid Tungsten Carbide burrs for rapidly removing all ferrous materials including steel, stainless and cast iron



Model No. **2185**

5PC. LONG DOUBLE CUT CARBIDE BURR SET 4.5"

- Extra-long 4.5" double cut for hard to reach areas



Model No. **2181B**

2PC. DIE GRINDER KIT WITH 1/4" MEDIUM DIE GRINDER AND 8PC. DOUBLE CUT CARBIDE ROTARY BURR SET

- Lever throttle for feathering control
- Positive grip - 1/4" capacity collet chuck



IMPACTS & AIR HAMMERS



Model No. **1812**

1/2" SUPER DUTY IMPACT WRENCH - TWIN HAMMER

- Ideal for general automotive work, light truck, farm, body shop, tire shop and front-end work
- Two piece construction for easy maintenance



Model No. **1822**

ONYX 1/2" NANO IMPACT WRENCH - 450FT/LB

- Extremely short profile, full length of less than 3 7/8"
- Incredibly light weight at 3.0lbs



Model No. **1828**

ONYX 3/8" NANO IMPACT WRENCH - 450FT/LB

- Ideal for use in restricted spaces such as engine, transmission, and suspension work
- 3/8" model allows for the shortest profile possible when paired with 3/8" impact sockets



Model No. **4901**

0.401" SHANK SUPER DUTY AIR HAMMER W/ 5PC. CHISEL SET

- Maximum power industrial grade .401" shank air hammer for heavy duty, off-road, and automotive applications
- Ideal for chipping, piercing, trimming, and cutting



Model No. **4980**

0.498" SHANK SUPER DUTY AIR HAMMER / RIVETER

- Maximum power air hammer for heavy duty, off-road, industrial and automotive applications
- Remove or install rivets in I-beam suspension and work site equipment, heavy duty servicing of truck bushings, springs, king pins and more

RATCHETS & DRILLS

AIR TOOLS



Model No. **1111**

1/4" PALM RATCHET WRENCH

- Ideal tool for confined working areas such as under dashboard work
- Overall length 5 1/2" (140mm)



Model No. **1119**

3/8" DRIVE MINI WOBBLE AIR RATCHET

- Ideal for use on hard to reach places
- Wobble drive provides added flexibility to access hard to reach areas



**THE LATEST
IN IMPACT RATCHET
TECHNOLOGY**

Model No. **1124**

1/4" MINI IMPACT RATCHET WRENCH

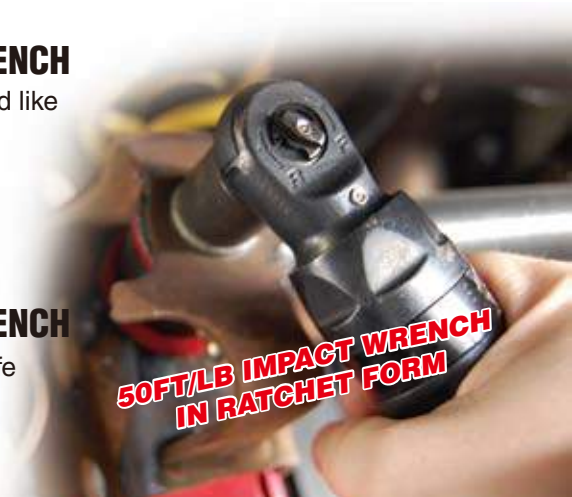
- Will not stop and rip from the user's hand like traditional ratchets, continues to impact
- 700RPM, 2-3X faster operation than traditional ratchets



Model No. **1128**

3/8" MINI IMPACT RATCHET WRENCH

- Sealed head design for increased tool life
- 50ft/lbs of working torque, 6.45" long



Model No. **525C**

3/8" REVERSIBLE AIR DRILL - 1,800RPM

- Equipped with a built-in muffler for noise reduction
- Provides full power in forward and reverse



Model No. **527C**

1/2" EXTRA HEAVY DUTY REVERSIBLE AIR DRILL - 500RPM

- Side handle for greater operator control
- One hand reverse lever for reversible action

Model No. **3035 AIR BELT SANDER 3/4" X 20.5"**
WITH 2PC. BELTS (#80 & #100)

Additional Belts Sold Separately (QTY10)

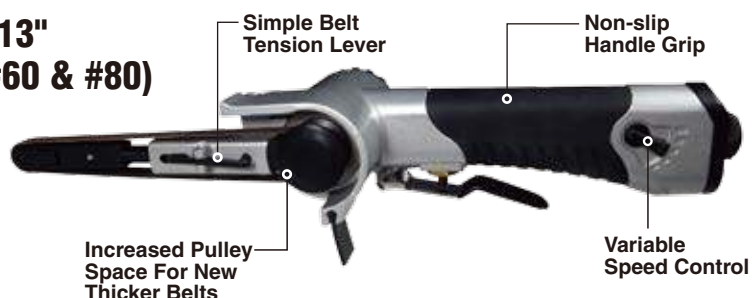
- **303540G** - 40 Grit - 13/16" x 20.5"
- **303560G** - 60 Grit - 13/16" x 20.5"
- **303580G** - 80 Grit - 13/16" x 20.5"
- **3035100G** - 100 Grit - 13/16" x 20.5"



Model No. **3036 AIR BELT SANDER 3/8" X 13"**
WITH 3PC. BELTS (#40, #60 & #80)

Additional Belts Sold Separately (QTY10)

- **303640G** - 40 Grit - 3/8" x 13"
- **303660G** - 60 Grit - 3/8" x 13"
- **303680G** - 80 Grit - 3/8" x 13"
- **3036100G** - 100 Grit - 3/8" x 13"



Model No. **3037 AIR BELT SANDER 1/2" X 18"**
WITH 3PC. BELTS (#36, #40 & #60)

- Great for Spot Weld Removal

Additional Belts Sold Separately (QTY10)

- **303736G** - 36 Grit - 1/2" x 18"
- **303740G** - 40 Grit - 1/2" x 18"
- **303760G** - 60 Grit - 1/2" x 18"
- **303780G** - 80 Grit - 1/2" x 18"
- **3037100** - 100 Grit - 1/2" x 18"



MICRO SANDERS

Model No. **ONYX MICRO SANDER**
320 -0.4HP



Model No. **ONYX MICRO RANDOM**
321 ORBIT SANDER



- Ideal for spot sanding focused areas
- Includes 2" & 3" PU Hook & Loop backing pad

HOOK & LOOP SANDING DISCS

| | | | | | |
|----------------------------|------------------------|--------------|--------------|---------------|--------------|
| 2" Sanding Discs | Model No. 2060P | 2080P | 2100P | 2120P | 2180P |
| | 60 Grit | 80 Grit | 100 Grit | 120 Grit | 180 Grit |
| | Model No. 2220P | 2320P | 2400P | 2600P | 2800P |
| | 220 Grit | 320 Grit | 400 Grit | 600 Grit | 800 Grit |
| 3" Sanding Discs | Model No. 3320P | 3400P | 3600P | 31000P | |
| | 320 Grit | 400 Grit | 600 Grit | 1000 Grit | |

25 PER PACK

SMALLEST & MOST POWERFUL SANDERS IN THEIR CLASS

Model No. **322P**

ONYX 6" FINISHING PALM SANDER WITH 6" PU PSA BACKING PAD - 3/16" STROKE

- Unit comes with Astro #4608 - 6" PSA Backing Pad
- High powered
- Sealed bearings for extended life



ALSO AVAILABLE WITH HOOK & LOOP Model No. 322



Model No. **4606**

6" PU HOOK & LOOP BACKING PAD

- 5/16 inch-24 UNF thread
- Max. RPM: 10,000



WORKS WITH POPULAR BRAND SANDERS AND POLISHERS

Model No. **4607**

5" PU HOOK & LOOP BACKING PAD

- 5/16 inch-24 UNF thread
- Max. RPM: 12,001

Model No. **3050**

COMPLETE DUAL ACTION SANDING & POLISHING KIT



Model No. **3055**

3" MINI AIR POLISHING KIT

- Ideal for buffing small confined areas where larger tools cannot do the job



SPECIALTY • PUNCH • FLANGE TOOLS

Model No. **209**

ONYX IN-LINE 3" CUT-OFF TOOL

- Unique In-Line design provides greater control



Model No. **409**

QUICK CHANGE IN-LINE 4" CUT-OFF TOOL

- Quick Change button on housing locks motor for easy disc changes
- Works with 3" or 4", 3/8" and 5/8" hole cut-off wheels



Model No. **512**

ONYX IN-LINE CUTTING SHEER

- In-line design for more natural cutting and smaller profile
- Incorporated regulator for adjustment



Model No. **727**

ONYX HEAVY DUTY AIR NIBBLER

- For professional grade applications
- Works on up to 17-gauge cold rolled steel



Model No. **605PT**

ONYX PISTOL GRIP PUNCH/ FLANGE TOOL WITH 5.5MM PUNCH

- Punch designed for easy replacement
- Features a rotating head for convenient use

Model No. **608PT**

ONYX PISTOL GRIP PUNCH/ FLANGE TOOL WITH 8MM PUNCH



Model No. **605ST**

ONYX STRAIGHT TYPE PUNCH/ FLANGE TOOL WITH 5.5MM PUNCH

- Every pull of the lever delivers a single punch or a single flange crimp with precision control
- Forms an offset crimped edge on sheet metals for no-bump lap welds

Model No. **608ST**

ONYX STRAIGHT TYPE PUNCH/ FLANGE TOOL WITH 8MM PUNCH

PINSTRIPES & ADHESIVE REMOVAL

400E SMART ERASER® PAD ITEMS

Model No. **400E**
SMART ERASER® PAD
FOR PINSTRIPES
REMOVAL TOOL



MADE IN THE USA

Model No. **400E6**
6 PACK -
SMART ERASER® PAD



6 PACK

Model No. **32**
PINSTRIPES
REMOVAL
KIT & 12
SMART
ERASER® PADS



Model No. **232**
ONYX PINSTRIPES
REMOVAL KIT WITH
ONYX PINSTRIPES
REMOVAL TOOL
& 12 SMART ERASER® PADS



500E **Rapid** ERASER PAD ITEMS

Model No. **500E**
RAPID ERASER PAD



MADE IN THE USA

Model No. **500ARS**
ONYX ADHESIVE
REMOVAL SYSTEM



Model No. **500ARS6**
ONYX ADHESIVE
REMOVAL SYSTEM -
INCLUDES 1PC. 500ET & 6PC. 500E



Model No. **WINDKO**

ONYX AIR WINDSHIELD REMOVER WITH 3PC. BLADE SET - REAR EXHAUST (ASSORTED BLADES AVAILABLE SEPARATELY)

- Efficiently cleans & smoothes moldings after glass removal
- Sealant cutter that cuts around bonded and encapsulated glass



Model No. **DS1000**

PNEUMATIC DOOR SKINNING TOOL

- Save significant time and cost in skinning doors



- Faster than any other method

Model No. **DS2000**

PNEUMATIC DOOR SKIN REMOVAL TOOL

- Design allows tool to maneuver around inner and outer curves as well as most body design features



Model No. **1715**

DELUXE AIR BLOW GUN WITH 13" LONG ANGLED NOZZLE



Model No. **1716**

DELUXE AIR BLOW GUN WITH 20" LONG ANGLED NOZZLE



Model No. **1717**

DELUXE 4" AIR BLOW GUN - GREEN



Model No. **1718**

DELUXE 4" AIR BLOW GUN - ORANGE



- *New, improved 2017 design maximizes lifetime expectancy*

Model No. **1711**

MICRO HIGH FLOW AIR BLOW GUN

- Turbo tip uses vacuum to multiply air flow, totaling up to 13CFM
- Includes pneumatic fitting and key chain ring



SIMPLE BUTTON THROTTLE





Model No. **4008**
SPRAY GUN WITH CUP
- RED HANDLE

- 1.8 mm Nozzle

- All-purpose easy-to-clean paint spray gun
- Two-piece construction with gun featuring exclusive air valve design



Model No. **PT2-4GH**
2-1/4 GALLON PRESSURE
TANK WITH SPRAY GUN &
12' HOSE - BLACK GUN

- 1.0 mm Nozzle

- Pressure spray gun equipped with pressure gauge and fluid pressure regulator for accurate settings
- 12 ft. twin set of hose permits easy movement and operation of spray gun



Model No. **2PG7S**
2 QUART PRESSURE POT
WITH SPRAY GUN AND
HOSE

- 1.2 mm Nozzle

- Pressure spray gun with 2 quart (1893cc) pressure pot
- Equipped with pressure gauge and fluid pressure regulator for accurate settings

Model No. **EUROHE103 / EUROHE105**
 1.3 mm Nozzle 1.5 mm Nozzle

EUROHE107 / EUROHE109
 1.7 mm Nozzle 1.9 mm Nozzle

EUROPRO HIGH EFFICIENCY / HIGH
TRANSFER SPRAY GUN

- HE technology for a wider pattern that layers paint thicker
- Less overlap on passes required



FAST DISPERSAL
OF MATERIAL

Model No. **EUROHV103 / EUROHV105**
 1.3 mm Nozzle 1.5 mm Nozzle

EUROHV107 / EUROHV109
 1.7 mm Nozzle 1.9 mm Nozzle

EUROPRO FORGED HVLP
SPRAY GUN

- Industry leading transfer efficiency, spend less on paint
- Maximum atomization
- Minimal CFM requirement



AIR REGULATORS & FILTERS

Model No. **AS7SP**

SPRAY GUN WITH CUP - BLACK HANDLE - 1.8MM NOZZLE

- Designed for superior atomization and coverage compared to other all-purpose spray guns
- Two-piece construction with gun featuring exclusive air valve design



Model No. **WS11**

AIR REGULATOR WITH GAUGE

- Provides fine air control for spray guns and air tools
- Swivel top allows for easy installation
- Fits any spray gun or air tool



Model No. **2618**

AIR CONTROL UNIT - 120CFM CAPACITY

- Filter and regulator in one
- Easy to install for light to medium industrial and automotive applications



Model No. **5706**

BRASS AIR REGULATOR

- Increases or decreases air pressure as desired
- 1/4" NPT

Model No. **557003**

500 LB. CAPACITY PORTABLE WORK STAND

- Great for working on doors, fenders, hoods and bumpers
- Adjustable height of 33" to 40" tall



ALSO AVAILABLE IN HEAVY-DUTY Model No. **557010**



Model No. **557100**

THE FENDER EXTENDER - 80" ADJUSTABLE EXTENSION FOR PORTABLE WORK STAND

- Extension designed for long/wide bumpers, hoods, and fenders that would normally be difficult to balance on a work stand
- 3 way adjustable from 77.5" to 80" in length, works on any tube design work stand



Model No. **7306**

ADJUSTABLE 7 FOOT PAINT HANGER

- Adjustable frame that extends from 5ft to 8ft
- Six Hooks to hold parts for painting/drying





Model No. **ASMS2**
**MASKING STATION
- TREE TYPE**

- Mobile yet stable
- Up to 18" paper rolls



Model No. **MM18**
18" MASKING MACHINE

- Allows for custom alignment of paper rolls and tape position



Model No. **4577**
**MOBILE STEP
MASKING MACHINE**

- Unit can be used as a step stool
- Lightweight, easy to use and portable



Model No. **4550A**
AIR OPERATED PAINT SHAKER

- New larger adjustable rubber clamps accommodate pints, quarts, gallons and large European cans



Model No. **7300**
**SUPER STAND - UNIVERSAL ROTATING
PARTS WORK STAND**

- Handle any panel, fender, door, hood, or bumper to make repairs and refinishing easy
- Comes with 8 adjustable bars to fit almost any panel securely



Model No. **9425**
DUAL TEMPERATURE HEAT GUN KIT

- Unit has a switch which allows for two different heat settings
- Double insulation for extra safety



Model No. **9426**
INDUSTRIAL HEAVY-DUTY HEAT GUN

- Variable temperature adjustment provides a maximum temperature of 1000-1100 Degrees F
- Powerful blower provides a high volume of air needed for industrial applications

Model No. **4524**
11PC. AUTO FASTENER & MOLDING REMOVAL TOOL SET

- For use on internal and external vehicle molding and trim fasteners
- Plastic construction of tools prevents scratching and damage to vehicle paint, leather, chrome, etc



Model No. **7600**
HOT STAPLE GUN KIT FOR PLASTIC REPAIR

- Designed for quick repair and reinforcing broken/ripped/damaged/split plastic on autos, motorcycles, ATVs, boats, etc
- Unique Staple Gun heats special designed staples and sets staples into plastic



COLOR MATCH LIGHTS

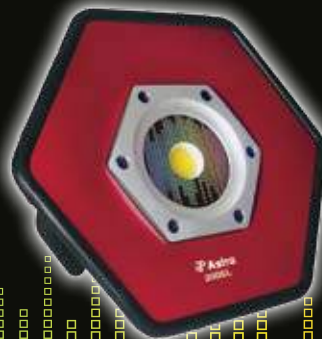
Model No. **50SL** **SUNLIGHT** 400 LUMEN RECHARGEABLE HANDHELD COLOR MATCH LIGHT - CRI 97



Model No. **200SL**

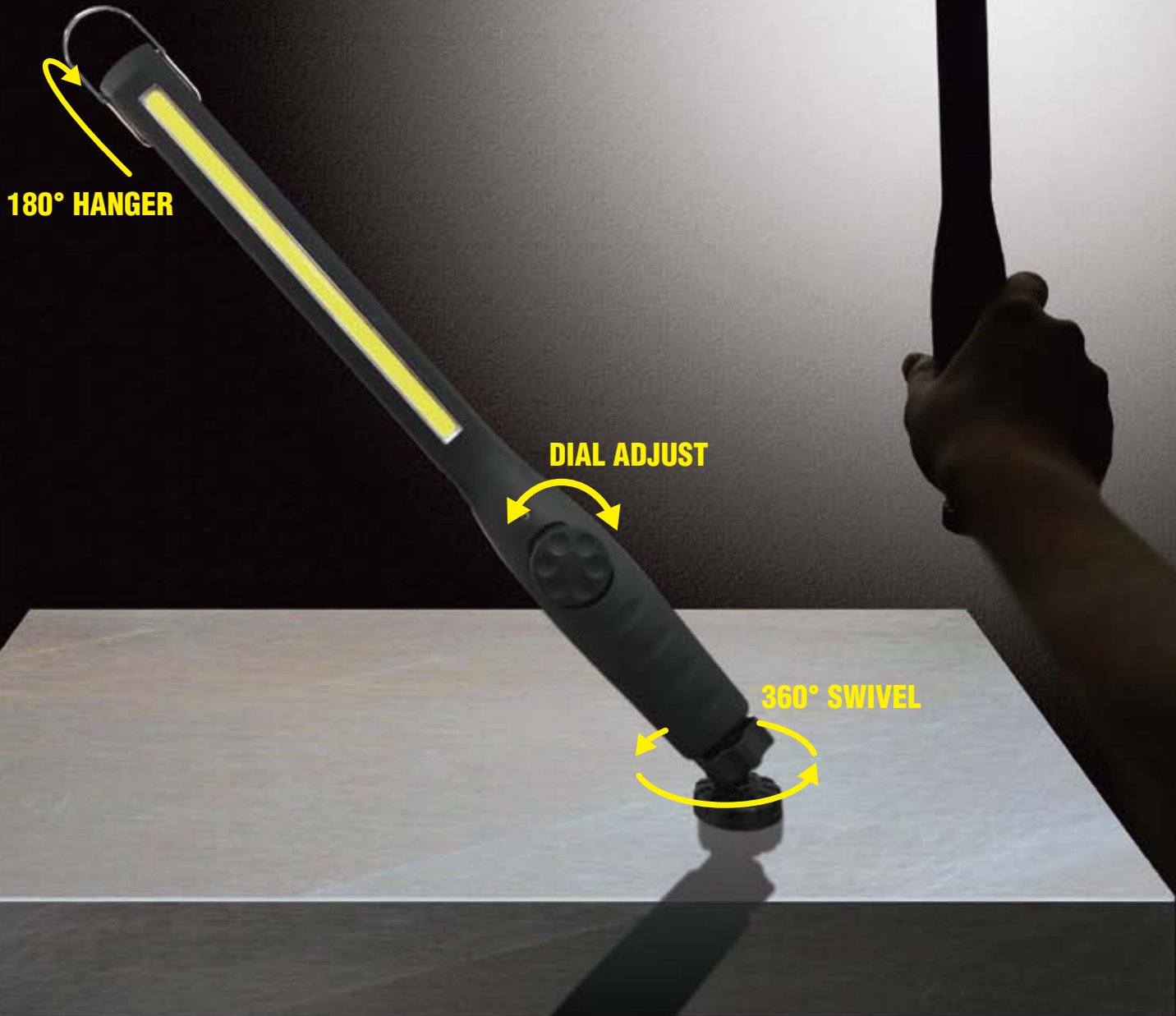
SUNLIGHT

1800 LUMEN RECHARGEABLE COLOR MATCH FLOOD LIGHT - CRI 95 W/ ROLLING STAND



Model No. **40SL**

410 RECHARGEABLE
LUMEN COB LED SLIM LIGHT



180° HANGER

DIAL ADJUST

360° SWIVEL



REAR MAGNET

FOLD NEARLY 180°

Model No. **20SL**

350 LUMEN FOLDING RECHARGEABLE COB LED SLIM LIGHT

- Folds both forward and backward to direct light where it is needed
- Large 2800mAh lithium battery for 3.5-4hrs at max output



ALSO AVAILABLE IN TACTICAL CAMO Model No. **35SLC**

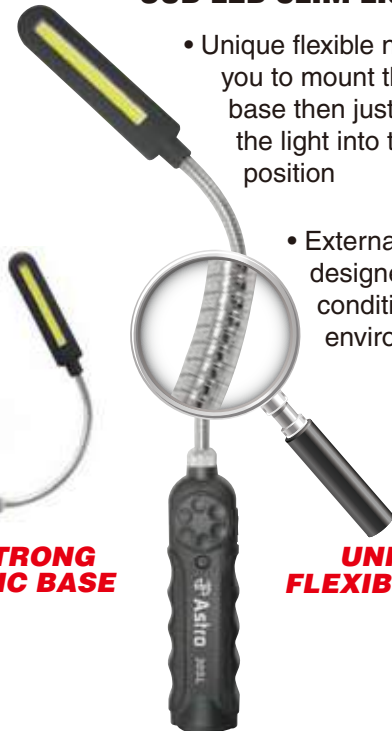
Model No. **35SLB TACTICAL BLACK EASY CHANGE LED INSPECTION LIGHTS**

- Easily switch between 350 lumen COB inspection light and 250 lumen flashlight heads
- Magnetic Base

Model No. **30SL**

FLEXIBLE RECHARGEABLE COB LED SLIM LIGHT

- Unique flexible neck allows you to mount the magnetic base then just bend and twist the light into the desired position
- Externally and internally designed for harsh conditions and dirty environments



20LB STRONG MAGNETIC BASE

UNIQUE FLEXIBLE NECK

Model No. **12SL**

ULTRA SLIM RECHARGEABLE INSPECTION LIGHT WITH MAGNET & HOOK ACCESSORIES

- The thinnest and most durable rechargeable light on the market
- Constructed with a super slim design making it 0.5" thick and weighs 0.25 lbs.





***INDUSTRY LEADING
RIVETERS AND RIVET NUT TOOLS***

RIVETERS

Model No. **1423**

1/4" HEAVY DUTY 13" HAND RIVETER

- Shorter profile yet requires less effort due to hinged torque multiplier design
- No need to adjust the tool when changing rivet diameters



Model No. **1426**

1/4" HEAVY DUTY HAND RIVETER

- Extra long handles provide excellent leverage
- Spent mandrels are collected in the plastic container for safety and easy disposal



Model No. **PR14**

AIR RIVETER - 3/32", 1/8", 5/32", 3/16" AND 1/4" CAPACITY

- Provides quick, quiet and comfortable operation in high use settings

ALSO AVAILABLE WITH UP TO 3/16" CAPACITY Model No. **PR36**



HAND RIVET NUT TOOLS



Model No. **1442**

13" HAND RIVET NUT SETTING KIT

- New "Toolless Quick-Change Head" design allows for easy changing of mandrels and nosepieces by hand
- Disassembly of tool never required, unique spring loaded inner hex
- Includes 10 pieces of each of the following rivet nuts: M5, M6, M8, 10-24, 1/4-20 and 5/16-18



Model No. **1452**

XL NUT/THREAD SETTING HAND RIVETER KIT 1/2" CAPACITY



- This XL models makes setting extra large rivet nuts like 1/2" and M12 a breeze

Model No. **1427**

HAND RIVET NUT KIT - M5, M6, M8, M10 & M12 KIT

- Works for rivet nuts in M5, M6, M8, M10 & M12 sizes in aluminum, steel and stainless steel



AIR RIVET NUT TOOLS

FASTENING

Model No. **PRN1**

3/8" CAPACITY PNEUMATIC RIVET NUT SETTING KIT - METRIC & SAE

- Instantly set rivet nuts with a pull of the trigger
- Quickly un-thread set rivet nuts by operating free spinning rear wheel



| Model No. | Size | Model No. | Size |
|-------------|------|---------------|------------|
| RN4M | M4 | RN832 | #8 - 32 |
| RN5M | M5 | RN1024 | #10 - 24 |
| RN6M | M6 | RN14 | 1/4" - 20 |
| RN8M | M8 | RN516 | 5/16" - 18 |

100PCS RIVET NUTS



ONYX PNEUMATIC RIVET NUT SETTING GUN

Model No. **PRN12**
3/8" & 1/2" MANDRELS

Model No. **PRN12M**
10MM & 12MM MANDRELS

- Dial in regulator settings for specific rivet nut sizes and compositions
- Forward and reverse actions for quick operation



ONYX PNEUMATIC RIVET NUT SETTING GUN W/ QUICK-CHANGE

Model No. **PRN516**
1/4" & 5/16" MANDRELS

Model No. **PRN8M**
6MM & 8MM MANDRELS

- Quick change mandrel system
- Adjustable power, dial in regulator setting for specific rivet nut sizes and compositions

**NEW STRONGER
C-CLAMP FOR 2017**

Model No. **7897**

BALL JOINT SERVICE TOOL AND MASTER ADAPTER SET

- C frame press alone can be used to remove and replace universal joints
- Set includes all the receiver tubes and removing/installing adapters needed to work on press-fit upper and lower ball joints on most domestic and many 4WD and 2WD vehicles



Model No. **7865**

BALL JOINT SERVICE TOOL WITH 4-WHEEL DRIVE ADAPTERS

- Set contains C-frame press, 3 receiver tubes sizes: 2-3/4"x3", 2-1/4"x2-1/2" & 1-3/4"x2", installation and removing adapters
- This heavy duty tool set is excellent for removal and installation of press-fit parts such as ball joints, universal joints and truck brake anchor pins



**NEW STRONGER
C-CLAMP FOR 2017**

Model No. **7868**

MASTER BALL JOINT ADAPTER SET

- Includes all the receiving tubes and removing/installing adapters needed to work on most GM, Ford and Dodge 2-wheel and 4-wheel drive pick-ups, vans and sport utility vehicles through 1997
- Work on press-fit upper and lower ball joints





Model No. **78585**

UNIVERSAL RADIATOR PRESSURE TESTER & VACUUM TYPE COOLING SYSTEM KIT

- Allows easy testing for leakage in radiator system and quick change of coolant
- Unit is suitable for domestic and import vehicles



Model No. **78930**

16PC. MASTER DISCONNECT KIT

- A complete Fuel & Transmission Line Disconnect Set in a handy blow-molded case
- Separate fittings on fuel lines, fuel filters & fuel tank return lines



Model No. **7824**

BEARING RACE AND SEAL DRIVER-MASTER SET

- Makes it easier to insert wheel bearing race and seals without damage to race and axle housing
- Set includes nine disc sizes to fit most standard wheel bearings

Model No. **78613**

ONE-PERSON BRAKE BLEEDING WRENCH KIT W/ CHECK VALVE

- Ideal for brake bleeding without removing the wheels and/or raising the vehicle
- Prevent old fluid and air contamination with drip-less one way check valve design



Model No. **7848**

8PC. PROFESSIONAL BRAKE TOOL SET

- Brake Spring Installer
- Spring Compressor



Model No. **78618**

18PCS. BRAKE CALIPER WIND BACK TOOL SET

- Designed for push back and wind back brake pistons
- Left and right-handed thrust bolts for a wide range of applications



Model No. **78810**

10PC. TORQUE LIMITING EXTENSION SET

- Accurately torque wheel nuts to recommended torque
- Save time securing wheel to vehicle, finish with torque wrench



Model No. **78818**

8PC. TORQUE LIMITING EXTENSION AND PROTECTIVE IMPACT SOCKET COMBO SET

- Lug Nut sockets feature protective sleeves and inserts to prevent wheel damage
- Color coded for quick reference

JACKS • HYDRAULIC PRESS • TRANSVERSE BAR

HYDRAULIC



Model No. **250DP**
**2-1/2 TON DOUBLE
PLUNGER HYDRAULIC
SERVICE JACK**



**ALSO AVAILABLE IN
LOW PROFILE** Model No. **5304A**

Model No. **5302A**
**20 TON AIR/MANUAL
BOTTLE JACK**



Model No. **AJ22C**
**22 TON CAPACITY AIR
OVER JACK WITH
QUICK SPRINGS**



Model No. **5820**
**ENGINE TRANSVERSE
BAR WITH SUPPORT
ARM**



Model No. **500HWA**
**1/2 TON CAPACITY
TELESCOPING
TRANSMISSION JACK**



Model No. **TS22A**
**HYDRAULIC PRESS -
20 TON CAPACITY**

Model No. **3018**

3.5" DIGITAL TIRE INFLATOR WITH HOSE

- New 21" Stainless braided hose for increased durability
- New dual AAA battery powered design. 4X the battery life and simplified battery installation



Model No. **3081**

DIAL GAUGE TIRE INFLATOR

- Aluminum die-casting unit covered with rubber sleeve for extra comfort and durability
- Two position inflate/deflate lever



Takes up to 200 psi from the compressor, reads up to 65 psi from the tire

Model No. **3082**

TPMS DIAL TIRE W/ STAINLESS HOSE 0-65 PSI

- Extreme accuracy. Up to 260% more accurate than the ANSI standard
- 3-in-1 function: inflate, deflate and measure tire pressure



Model No. **7445**

45PC. TIRE REPAIR TOOL KIT

- Set Includes:
 - 1pc - Heavy-duty Steel T-Handle Insert Tool
 - 1pc - Heavy-duty Steel T-Handle Spiral Probe Cement Tool
 - 2pc - Replacement Tool
 - 40pc - 4" string
 - 1pc - Lubricant
- With black blow molded case

PLIERS

7" 4PC. INTERNAL/EXTERNAL CR-V SNAP RING PLIERS

Model No. **94220** - .050"

Model No. **94221** - .067"



- Black & Polished Finish w/ Dipped Handles
- Internal and External straight and 90 degree bent pliers



Model No. **9401**
10PC. SNAP RING PLIERS SET

- Operates both internal and external rings
- Heat treated Chrome-Vanadium



Model No. **9049A**
HOSE CLAMP PLIERS

- New cable adjuster and multiple gear lock provide accurate and secure locking for any clamp position between minimum and maximum range
- Pliers can be locked, freeing up your hands and making your job easier and faster



Model No. **9502**
2PC. HOSE REMOVAL HOOK SET

- Two hook designs to fit between various fittings and hoses
- Works great when paired with Astro's 9409A Hose Clamp Pliers

FLARE NUT WRENCHES

5PC RATCHET & RELEASE FLARE NUT WRENCH SET



MODEL NO. 7120 SAE



DON'T GIVE UP STRENGTH OR DURABILITY

[7120]
3/8", 7/16",
9/16", 5/8", 11/16"

[7120M]
10mm, 12mm,
13mm, 14mm, 18mm

MODEL NO. 7120M METRIC



SOCKETS & SHOP EQUIPMENT

Model No. **7407**

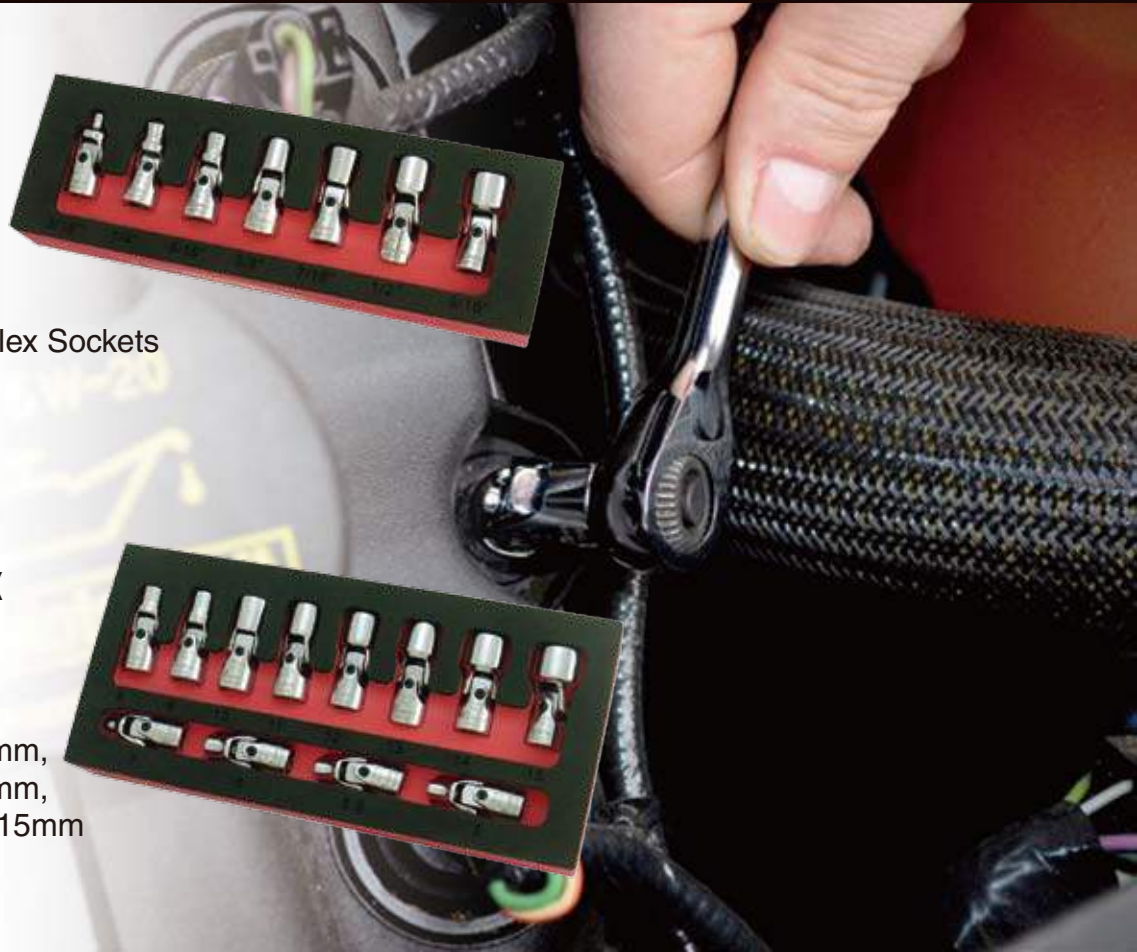
7PC. 1/4" DRIVE FLEX SOCKET SET - 6 POINT - SAE

- Set includes:
3/16", 1/4", 5/16", 3/8",
7/16", 1/2" and 9/16" Flex Sockets

Model No. **7412**

12PC. 1/4" DRIVE FLEX SOCKET SET - 6 POINT - METRIC

- Set includes:
5mm, 5.5mm, 6mm, 7mm,
8mm, 9mm, 10mm, 11mm,
12mm, 13mm, 14mm, 15mm
Flex Sockets



Model No. **1600**

16PC. PUNCH AND CHISEL SET

- Included Taper Punch, Cold Chisels, Pin Punch and Center Punch
- Product material: CR-V and hardness: 54~58HRC



Model No. **1612**

12PC. LARGE COLD CHISEL & PUNCH SET

- High Rockwell hardness, but low enough to prevent chipping and cracking from heavy hammering
- Each blade is designed for the best balance between edge sharpness and edge strength



Model No. **7661**

DUAL VOLUME CONTROL ELECTRONIC SAFETY EARMUFFS

- Each side has independent power and volume control
- No exposed wiring for increased durability and ideal for easy storage



Model No. **7764**

DIGITAL LCD 3-48V WIDE RANGE CIRCUIT TESTER

- Computer Safe with Backlit LCD display for accurate voltage readouts



Model No. **7760**

CORDLESS CIRCUIT TESTER

- Does not require ground wire or clip and is safe with ECMs, Sensors, Transducers, Airbags, etc.
- Special designed V-Tip needle allows safe piercing and prevents side-slipping when piercing wire's insulation. V-Tip can be removed to test hard to reach places



Model No. **9477**

7PC. PROFESSIONAL QUICK INTERCHANGEABLE RATCHET CRIMPING TOOL SET

- Quick changing jaw design does not require any other tool to change the jaws
- Ergonomically designed steel frame handles with contoured rubber grips



Model No. **9478**

220PC. WEATHER PACK INTERCHANGEABLE RATCHETING CRIMPING TOOL & ACCESSORY SET

- Includes two different jaws sets for a wide range of Delphi Packard style connectors
- Wide range of accessories for repairing or building your own weatherpack connectors



Model No. **8330**

HEAVY DUTY PLASTIC 2 SHELF UTILITY CART - BLACK COLOR

- Trays are 3 1/2" deep and can hold up to 300lbs
- For shop, office, warehouse or medical facility use



Model No. **7343**

MANUAL FLUID EXTRACTOR - 9.0 LITERS

- Unique brake fluid attachment w/ hose seals onto brake bleeder fittings
- New and improved for longer lasting vacuum



Model No. **78521**

2-IN-1 OIL FILTER SOCKET - LEXUS / TOYOTA

- Easy to use in limited space, and can be used with a 1/2" drive tool or 21mm wrench
- For Toyota - 3.5L since 2007
For Lexus - IS250, IS350, GS300, GS350, GS450HE, S350, RX350, LS480, and LS600H

AstroFlex

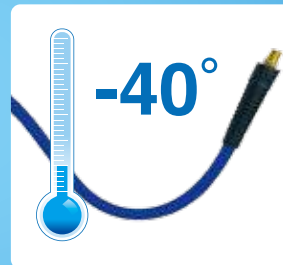


**ULTIMATE COMBINATION
OF FLEXIBLE HOSE
WITH ROBUST STEEL
HOSE REEL!**



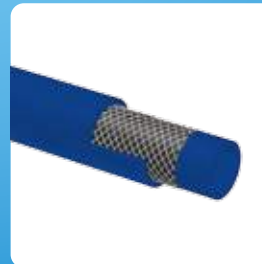
- All-weather flexibility including extreme cold

- Lighter and less bulky than traditional solid rubber hoses



- Specially formulated polymer, nylon rubber hybrid design

- Solid Brass Fittings



| Model no. | Size | Type | Brass Fittings | Color |
|-----------|------------|-------------|----------------|-------|
| 3695 | 3/8" x 50' | Hybrid Reel | 1/4" | Blue |
| AF3825B | 3/8" x 25' | Hybrid Hose | 1/4" | Blue |
| AF3850B | 3/8" x 50' | Hybrid Hose | 1/4" | Blue |
| AF3850R | 3/8" x 50' | Hybrid Hose | 1/4" | Red |
| AF1250R | 1/2" x 50' | Hybrid Hose | 3/8" | Red |

| SPECIFICATIONS | |
|----------------------|--------------------|
| <i>Air Hose Size</i> | 3/8" x 50' |
| <i>Air Inlet</i> | 1/4" NPT(F) |
| <i>Air Outlet</i> | 1/4" NPT(M) |
| <i>Max. Pressure</i> | 300 PSI |
| <i>Max. Air Flow</i> | 25 CFM |