

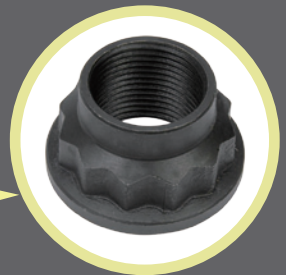


Model # 78866

**8PC. 6 POINT
AXLE NUT
SOCKET SET**



- EXTRA DEEP PRECISION BROACHED AND FORGED FROM CR-MO WITH LASTING FINISH
- INCLUDES SEVEN 6-POINT AXLE NUT SOCKETS AND ONE 12-POINT AXLE NUT SOCKET (39MM)
- 39MM SIZE IS 12-POINT DESIGN FOR 39MM APPLICATIONS WHICH ALL HAVE 12-POINT NUTS (TOYOTA/LEXUS)

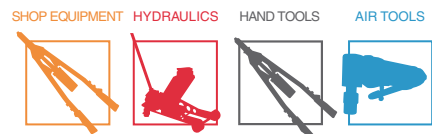


Model	Kit Includes
78866	29mm, 30mm, 32mm, 34mm, 35mm, 36mm, 38mm, 39mm

- 6-POINT 29MM, GM LATE MODEL, FORD, ASIAN
- 6-POINT 30MM, GM BODY STYLES A, J AND N, ASIAN
- 6-POINT 32MM, HONDA, CHRYSLER
- 6-POINT 34MM, GM MID-SIZE
- 6-POINT 35MM, GM
- 6-POINT 36MM, GM, FORD, CHRYSLER
- 6-POINT 38MM, FULL-SIZE AND SUVs
- 12-POINT 39MM, TOYOTA/LEXUS FULL-SIZE AND SUV



UNDERCAR KIT



MODEL NO.
78866



IMPACT RATED

8 6 POINT PIECE AXLE NUT SOCKET SET

- ✔ Includes seven 6-point axle nut sockets and one 12-point axle nut socket (39mm)
- ✔ 39mm size is 12-point design for 39mm applications which all have 12-point nuts (Toyota/Lexus)
- ✔ Extra deep precision broached and forged from Cr-Mo with lasting finish

WHAT'S INCLUDED

1PC - 6-Point 29mm, GM Late model, Ford, Asian
 1PC - 6-Point 30mm, GM body styles A, J and N, Asian
 1PC - 6-Point 32mm, Honda, Chrysler
 1PC - 6-Point 34mm, GM Mid-size
 1PC - 6-Point 35mm, GM

1PC - 6-Point 36mm, GM, Ford, Chrysler
 1PC - 6-Point 38mm, Full-size and SUVs
 1PC - 12-Point 39mm, Toyota/Lexus
 Full-size and SUV



39mm FOR TOYOTA AXLE NUTS

