

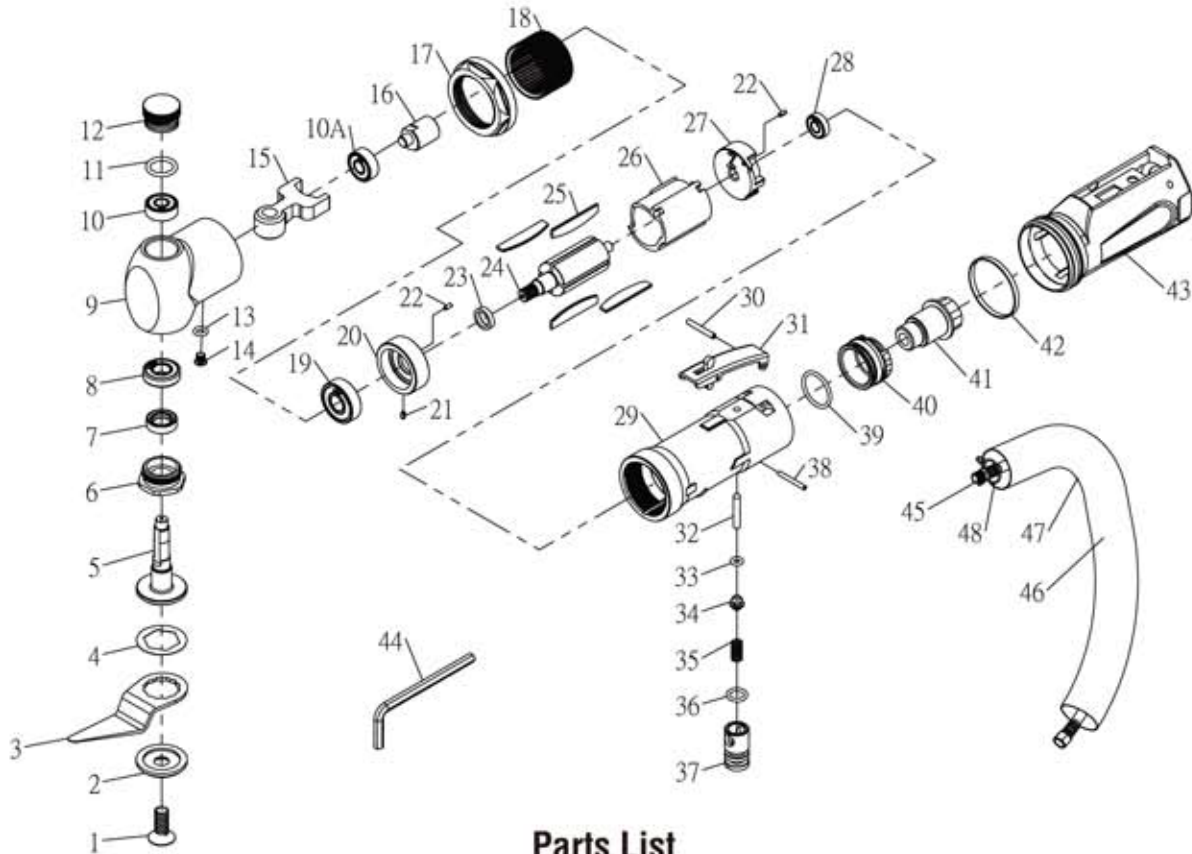


**Astro Pneumatic
Tool Company**

Model:
WINDKO

Product Type:
**AIR WINDSHIELD REMOVER WITH
3PC. BLADE SET - REAR EXHAUST**

PARTS BREAKDOWN



Parts List

Index	Part No.	Description	Qty
1	WINDKO-01	Screw (M8x20)	1
2	WINDKO-02	Retainer	1
3	WINDKO-08E	Blade 57mm (2-14")	1
4	WINDKO-04	Packing	1
5	WINDKO-05	Spindle Drive	1
6	WINDKO-06	Nut Clamp	1
7	WINDKO-07	Seal Oil	1
8	WINDKO-08	Ball Bearing (6900zz)	1
9	WINDKO-09	Head	1
10	WINDKO-10	Ball Bearing (607zz)	1
10A	WINDKO-10A	Ball Bearing (607zz)	1
11	WINDKO-11	O-Ring (P14)	1
12	WINDKO-12	Plug	1
13	WINDKO-13	O-Ring (P5)	1
14	WINDKO-14	Screw (M5x6)	1
15	WINDKO-15	Fork Drive	1
16	WINDKO-16	Shaft Crank	1
17	WINDKO-17	Coupling Nut	1

Index	Part No.	Description	Qty
18	WINDKO-18	Internal Gear	1
19	WINDKO-19	Ball Bearing (6000ZZ)	1
20	WINDKO-20	Front End Plate	1
21	WINDKO-21	Spring(ø2.5x4)	1
22	WINDKO-22	Spring Pin (ø2.5x5)	2
23	WINDKO-23	Washer	1
24	WINDKO-24	Rotor	1
25	WINDKO-25	Rotor Blade	4
26	WINDKO-26	Cylinder	1
27	WINDKO-27	Rear End Plate	1
28	WINDKO-28	Ball Bearing (696ZZ)	1
29	WINDKO-29	Motor Housing	1
30	WINDKO-30	Spring Pin (ø3x22)	1
31	WINDKO-31	Safety Lever Ass'y	1
32	WINDKO-32	Valve Shaft	1
33	WINDKO-33	O-Ring (P4)	1
34	WINDKO-34	Throttle Valve	1
35	WINDKO-35	Valve Spring	1

Index	Part No.	Description	Qty
36	WINDKO-36	P10A	1
37	WINDKO-37	Valve Screw	1
38	WINDKO-38	Spring Pin(2.5x20)	1
39	WINDKO-39	O-Ring (S22.4)	1
40	WINDKO-40	Exhaust Sleeve	1
41	WINDKO-41	Inlet Bushing	1
42	WINDKO-42	"O" Rubber band	1
43	WINDKO-43	Housing Cover	1
44	WINDKO-44	Hattagon Wrench Key 5	1
45	WINDKO-45	Air Hose Ass'y 1/4"	1
46	WINDKO-46	Sponge	1
47	WINDKO-47	Exhaust Hose	1
48	WINDKO-48	Stop Ring	1