

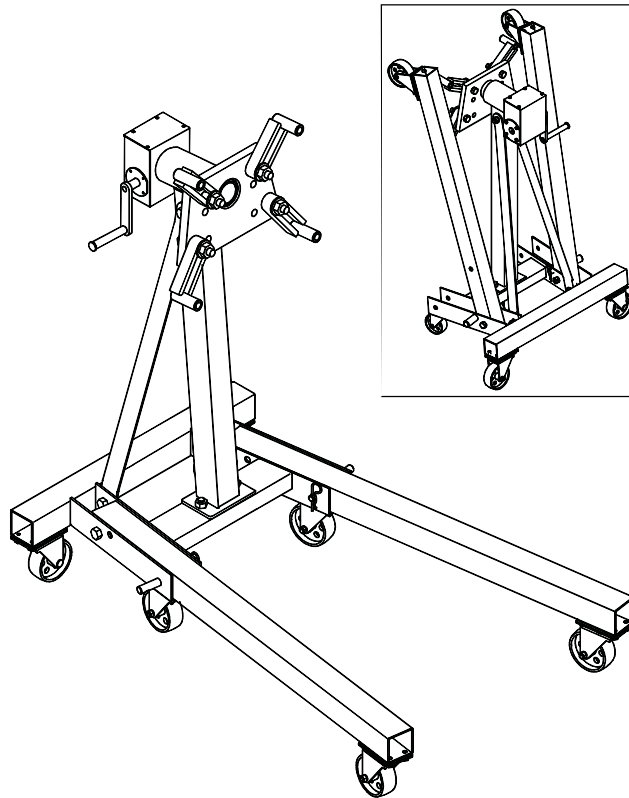


Folding Engine Stand

Manual

Model Number
ATD-7479

Capacity
1250 lbs.



Model ATD-7479 (Gear box control rotating head)

⚠ WARNING ⚠

WARNING: This product may contain chemicals, including lead, known to the State of California to cause cancer, birth defects or other reproductive harm. *Wash hands after handling.*

Save these instructions. For your safety, read and understand the information contained within. The owner and operator shall have an understanding of this product and safe operating procedures before attempting to use this product. Instructions and safety information shall be conveyed in the operator's native language before use of this product is authorized. Make certain that the operator thoroughly understands the inherent dangers associated with the use and misuse of the product. If any doubt exists as to the safe and proper use of this product as outlined in this factory authorized manual, remove from service. **Inspect before each use.** Do not use if broken, bent, cracked or otherwise damaged parts are noted. If the engine stand has been or suspected to have been subjected to a shock load (a load dropped suddenly and unexpectedly upon it), discontinue use until checked out by an authorized factory service center. Owners and operators of this equipment shall be aware that the use of this equipment may require special training and knowledge. It is recommended that an annual inspection be done by qualified personnel and that any missing or damaged parts, decals, warning/safety labels or signs be replaced with factory authorized replacement parts only. Any engine stand that appears to be damaged in any way, is worn or operates abnormally shall be removed from service immediately. Labels and owner's manuals are available from manufacturer (see Replacement Parts, page 6 thru 8).

PRODUCT DESCRIPTION

ATD Tools Folding Engine Stands are designed to safely support rated capacity engines. Welded steel tube construction, heavy gauge steel head plates and mounting arms along with compliance with factory standards ensure safety, strength and stability.

SPECIFICATIONS

Model	Capacity	Base Size	Overall Height	Head Plate	Head Plate Thickness	Wheel Dia.	Weight
ATD-7479	1250 lbs.	41-3/4" x 23-5/8"	42-3/4"	7-1/2" x 6-1/2" x 10-1/2"	5/8"	3-1/2"	117 lbs.

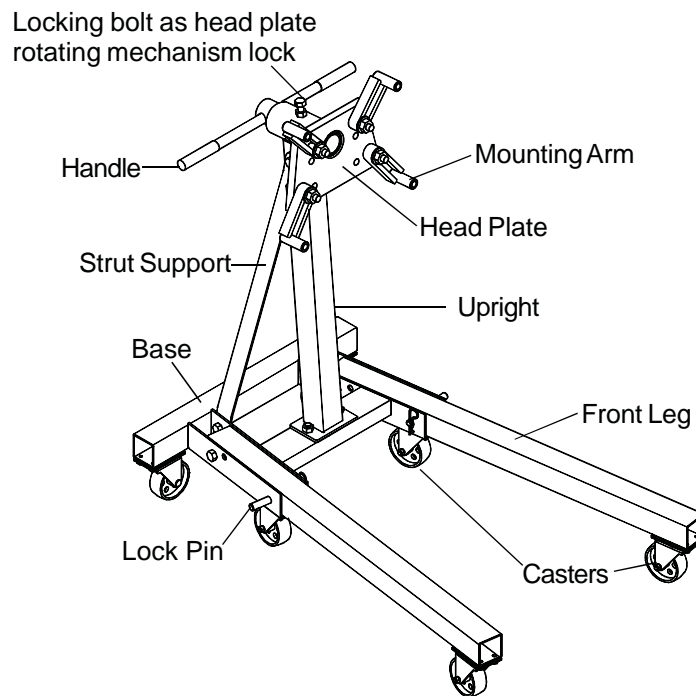
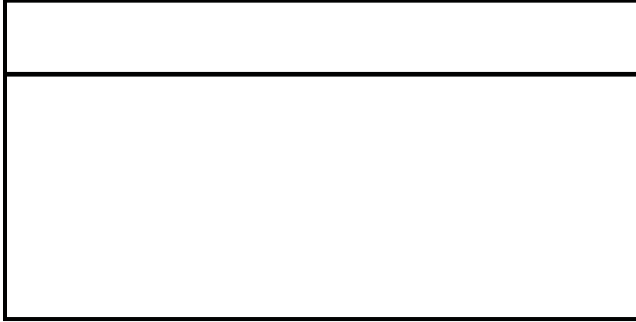


Figure 2 - Model ATD-7480 Engine Stand components

BEFORE USE

1. Inspect stand before each use. Do not use if bent, broken or cracked components are noted. Ensure that casters / wheels and head plate rotate freely. Check for and tighten any loose assemblies.
2. Verify that the product and the application are compatible.
3. Before using this product, read the owner's manual completely and familiarize yourself thoroughly with the product and the hazards associated with its improper use.



WARNING

- Study, understand, and follow all instructions provided with and on this device before use.
- Do not exceed rated capacity.
- Use only on a hard, level surface.
- Never put any portion of your body under engine when it is supported by the engine stand.
- Use only hardened, appropriately sized bolts to secure engine to stand.
- Center the engine on mounting plate and ensure attaching hardware is tightly fastened.
- Off center loading may cause the engine to rotate unexpectedly and cause the loaded stand to tip over.
- Lock mounting plate rotating mechanism before beginning engine service.
- Unlock rotating mechanism slowly and carefully.
- Do not modify or alter this product.
- Do not use this device for any purpose other than that for which it is intended.
- Failure to heed these markings may result in personal injury and/or property damage.

ASSEMBLY

Model ATD-7479 (see Figure 3)

Note. Reference numbers are for assembly purposes only. See replacement parts illustration for ordering replacement parts.

1. Attach four 3-1/2" casters (#29) to legs (#35) and base (#28) with M8x16 bolts & washers (#31 & 30).
2. Attach two 3" casters (#32) to base with M8x16 bolts, washers and spacers (#31, 30 & 33).
3. Attach upright (#12) to the base (#28) with M12x60 bolts, washers and nut (#37, 27 & 9). Hand tighten only.
4. Attach 2 of each strut supports (#25) to upright (#12) with M12x85 one bolt (#10). Attach strut supports (#25) to base (#28) with 2 M12x25 bolts, washers and nuts (#26, 27 & 9). Tighten all nuts.
5. Attach two legs (#35) to base (#28) with two M12x85 bolts, washers and nuts (#10, 27 & 9). Insert bolts from outer part of base.
6. Align holes and slide in lock pins (#34) and secure with cotter pins (#36)
7. Attach four mounting arms (#5) to the head plate assembly (#6) with M14x70 bolts, washers, spacers and nuts (#4, 3, 2 & 1).
8. Attach handle (#22) to gear box (#12) and secure with M5x12 bolt and spring washer (#14 & 15).

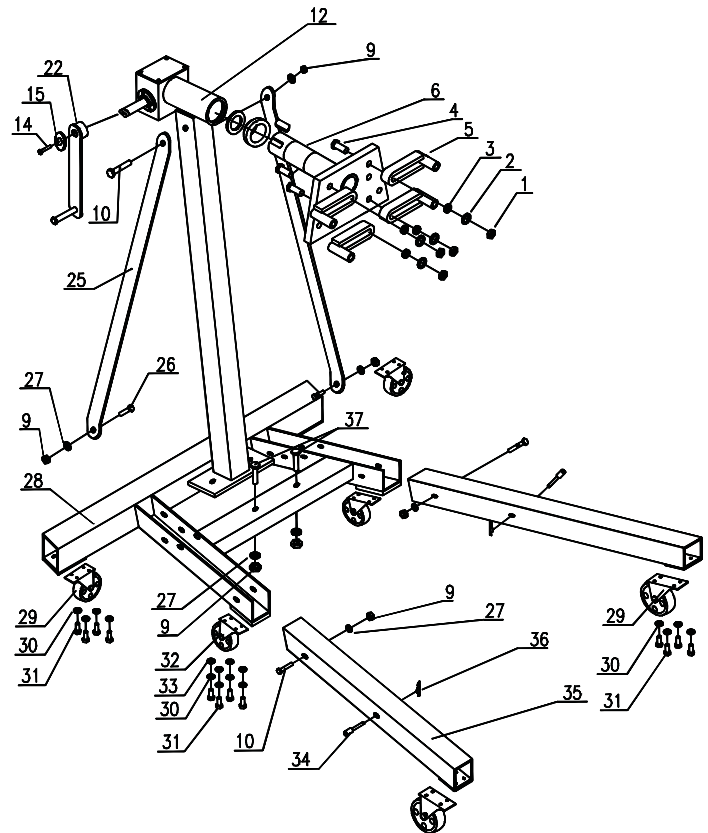


Figure 3 - Assembly Illustration for model ATD-7479

Folding Instruction (refer to Figure 5)

1. Remove lock pin of center wheel assembly and slide it into the top hole and secure with cotter pin.
2. Remove cotter pins and lock pins from both legs.
3. Carefully and slowly fold the leg up.
4. Slide two of each lock pins into the front hole of the base and secure with cotter pins.

! SAFETY MESSAGE !
Never load the Engine Stand while it is folded.

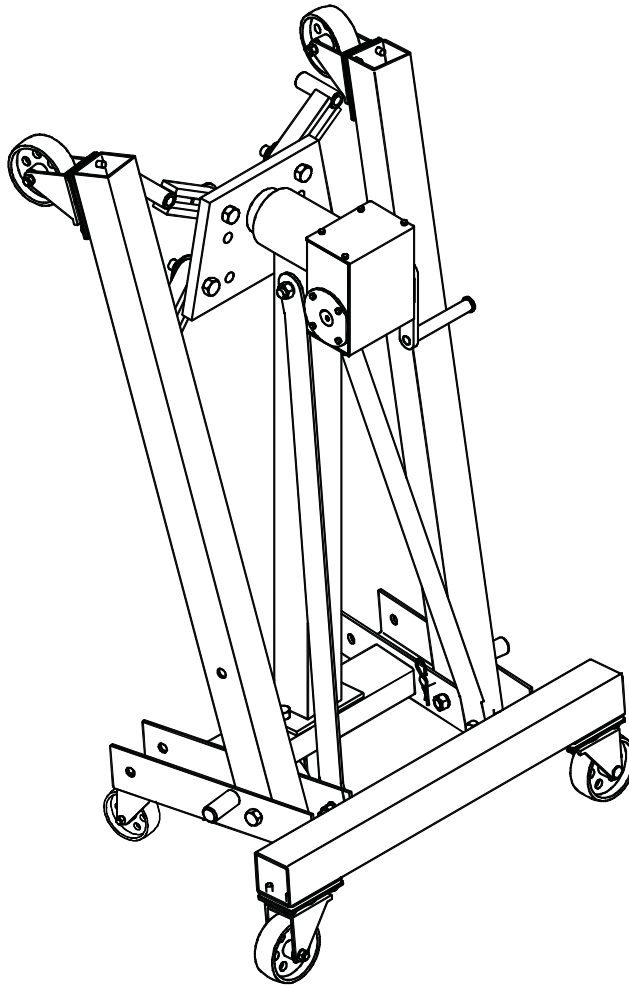


Figure 5 - Model ATD-7479 Engine Stand folding nomenclature

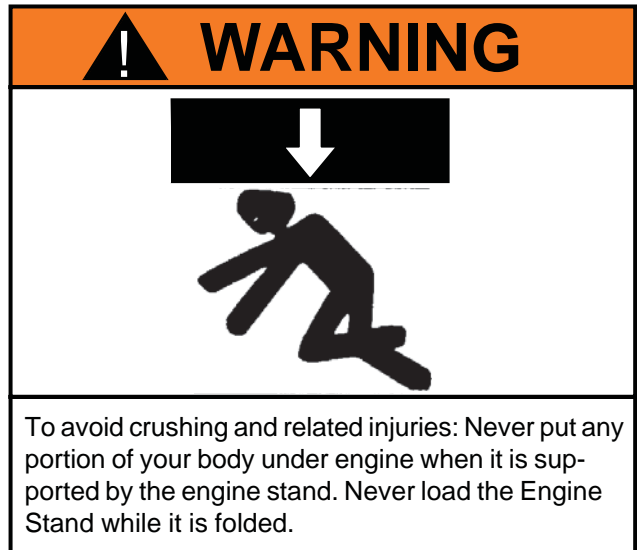
OPERATION

1. Ensure application is compatible with product.
2. Align engine with stand, then adjust mounting arms to match bell housing mounting bolt holes.
3. Carefully secure engine so that load is centered on stand. Secure with suitable high strength stud bolts and flat washers. **Ensure threads are compatible with your engine.** Use flat washers on both sides of head plate.
4. To rotate engine:
Use handle to rotate, then secure with rotational locking device. Carefully and slowly use operating handle to rotate.
5. Check to ensure stand is secure before working on or around stand. **NEVER WORK UNDER LOADED STAND.**

Note: Do not move loaded stand off hard smooth, level surface!

MAINTENANCE

Periodically inspect each stand. Ensure all parts move freely. Apply very light coating of grease to head plate collar. If rust appears, sand affected area and cover with suitable utility paint.



! SAFETY MESSAGE !

Be sure all tools and personnel are clear before lowering load. No alterations shall be made to this device. Only attachments and/or adapters supplied by the manufacturer shall be used.

Parts Description List for model ATD-7479

<u>Item</u>	<u>Part#</u>	<u>Description</u>	<u>Qty.</u>	<u>Item</u>	<u>Part#</u>	<u>Description</u>	<u>Qty.</u>
1 *	5202-0001	Hex Nut M14	4	21 *	T096-01007	Lock Pin	1
2 *	5302-0001	Big Spacer 14	4	22 *	T096-01200	Handle group	1
3 *	5303-0001	Spring Washer 14	4	23 *	T096-01001	Cottor Pin	1
4 *	5101-1407	Bolt M14x70	4	24 *	T096-01009-000	Gear Bar	1
5 *	T084-05000	Mounting Arms	4	25	T096-00001-000	Strut Support	2
6 *	T096-01100-000	Head Plate Assy	1	26	5101-12025-000	Bolt M12x25	2
7 *	T096-01004	Key	1	27 *	5303-00012-000	Spring Washer 12	7
8 *	T096-01006	Pipe	1	28	T095-01000-000	Base Assembly	1
9 *	5202-00012-000	Hex Nut M12	7	29	T084-06000-000	Caster, 3 1/2"	4
10	5101-12085-000	Bolt M12x85	3	30	5303-00008-000	Spring Washer 8	24
11 *	5602-4006	Bearing d40xD68	2	31	5102-08016-000	Bolt M8x16	24
12 *	T096-01300	Upright	1	32	T093-08000-000	Caster, 3"	2
13 *	T096-01008	Cover	1	33	5301-00008-000	Spacer 8	8
14 *	5102-0501	Bolt Hcs M5x12	19	34	T095-00002-000	Pin	2
15 *	T096-01010	Washer	2	35	T095-03000-000	Front Leg	2
16 *	5602-1704	Bearing d17xD40	2	36	T474-00007-000	Pin	2
17 *	T096-01005	Worm wheel	1	37	5101-12060-000	Bolt M12x60	2
18 *	T096-01003	Washer	1	-	T096-01000-000	Post Head Assy	-
19 *	5303-0000	Spring Washer 5	1	-	T096-02000-000	Hardware Kit Pack	-
20 *	T096-01002	Case Cover	1				

* - Included in Post Head Assy.

REPLACEMENT PARTS

Available Parts: Please refer to the Parts drawing when ordering parts. Not all components of the jack are replacement items, but are illustrated as a convenient reference of location and position in the assembly sequence. When ordering parts, give model number, part number and description. Call your distributor for current pricing:

Parts Illustration for model ATD-7479 (refer to parts description on page 7)

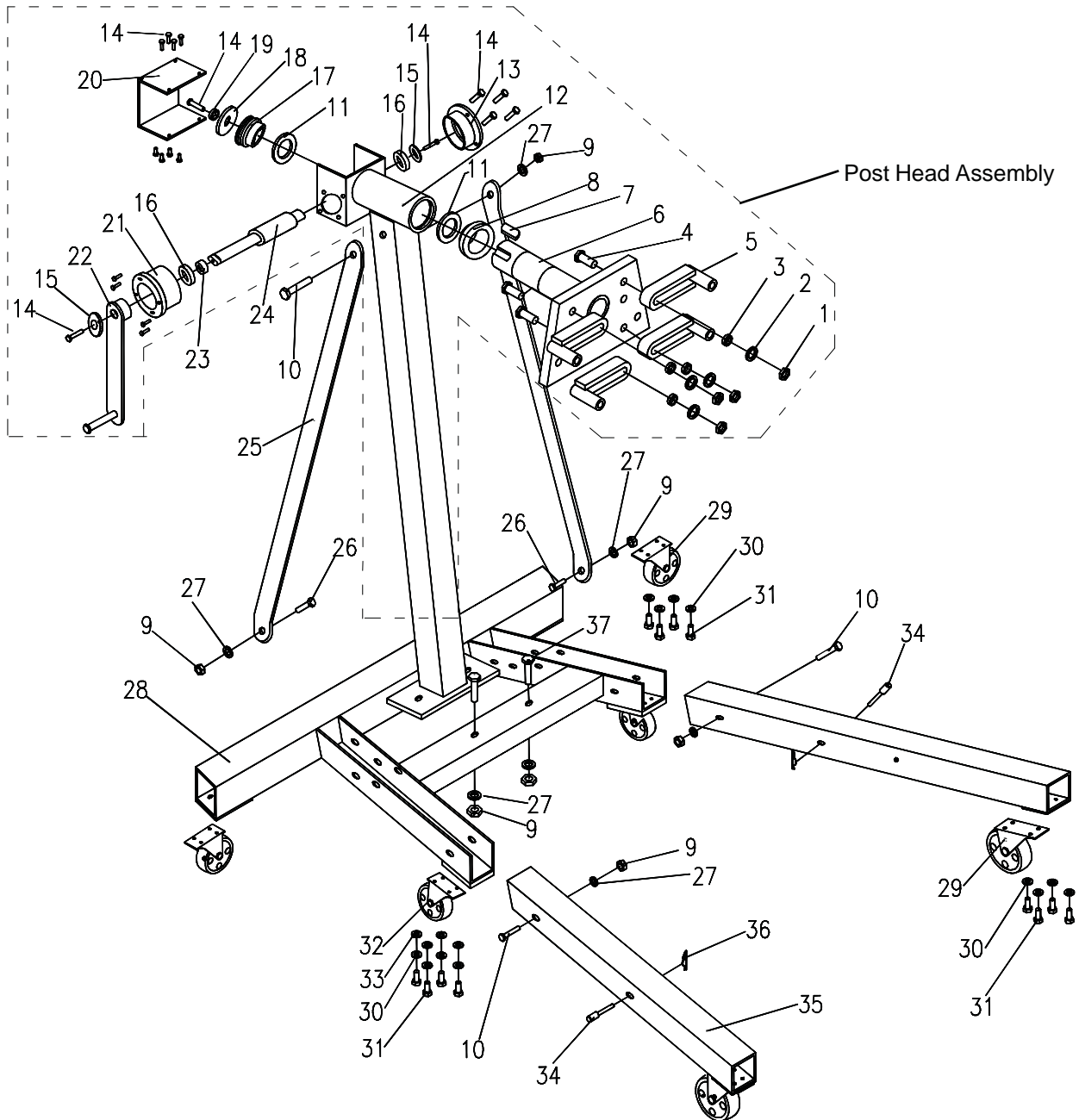


Figure 7 - Replacement Parts Illustration for model ATD-7479