



ATD-8635
35 pc. Truck Tire Repair Kit



Set Includes:

- 1 pc – T-handle Insert Tool
- 1 pc – T-handle Spiral Probe Tool
- 2 pc – Hex Key
- 30 pcs – 7.5" Tire Repair String (Tire Plug)
- 1 pc – Lubricant

⚠ WARNING ⚠

WARNING: This product contains chemicals, including lead, known to the State of California to cause cancer, birth defects or other reproductive harm. **Wash hands after handling.**

⚠ Safety Precautions

Caution: To help prevent personal injury

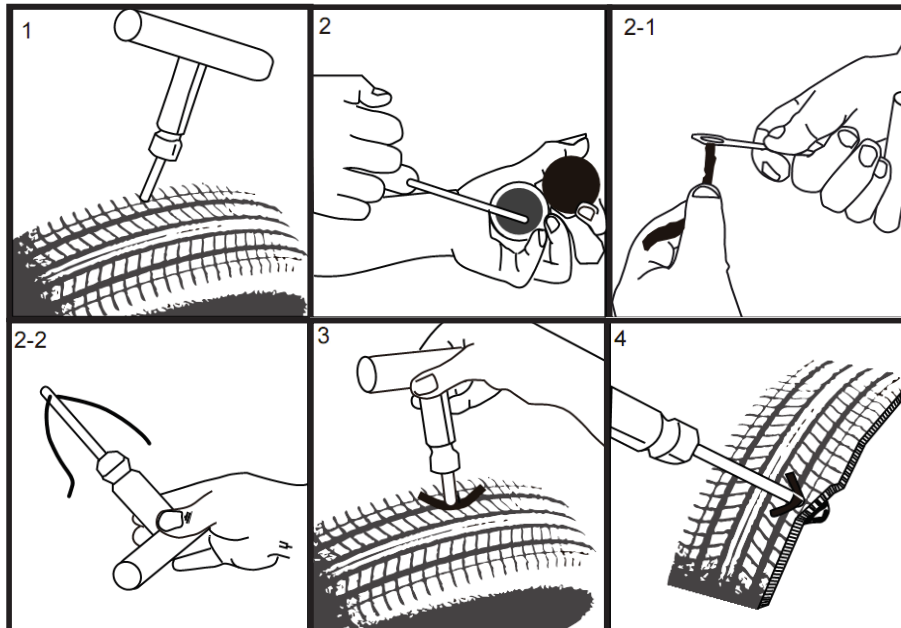
- Do not use the tool outside of the designed intent. Never modify the tool for any other purpose, or for its use.
- Normal use of this product is likely to expose the user to dust and/or microscopic particles containing chemicals known to the State of California to cause cancer, birth defects or other reproductive harm. Always wear appropriate safety equipment and clothing when using this product. Study, understand and follow all instructions provided with this product.
- Always wear ANSI approved goggles when using this product.
- Always select the correct accessories of the correct size and design for the job that you are attempting to perform.
- Always work in a clean, safe, well-lit, organized and adequately equipped area.
- Do not begin repairs without assurance that vehicle is in secure position, and will not move during repair.

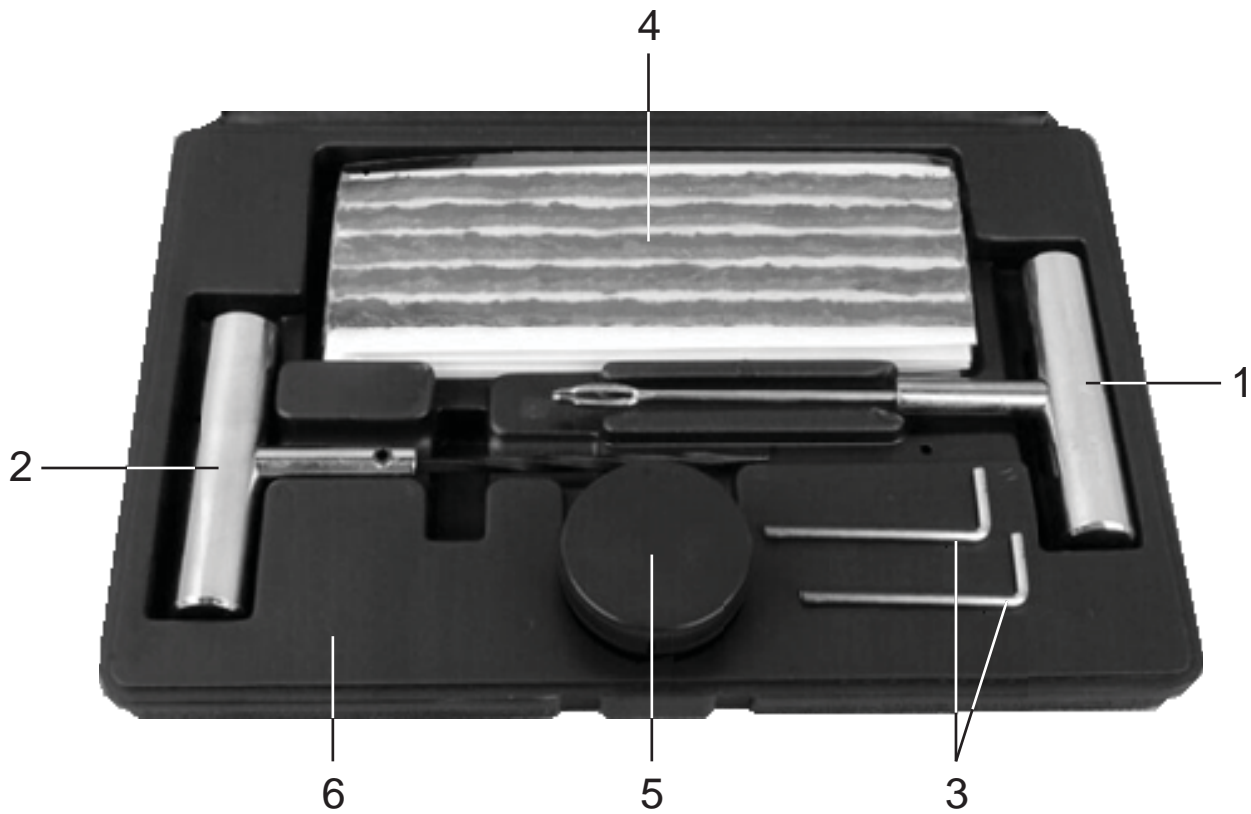
Important

Read these instructions carefully before installing, operating, servicing or repairing this tool. Keep these instructions in a safe accessible place.

INSTRUCTIONS:

1. Insert the T-handle Spiral Probe Tool into the punctured tread at a slight angle then straighten the tool and push the tapered shaft in and out of the hole several times to expand and enlarge the broken steel cord.
2. Prepare T-handle Insert Tool for insertion by first dipping the tip into the lubricant.
2-1 Next insert the tire repair string (tire plug) through the hole in the installer tool.
2-2 Make sure that the tire repair string (tire plug) is fairly well centered in the shaft prior to installation.
3. Insert the tire repair string (tire plug) into the hole and push straight down on the insert tool handle until the ends of the tire repair string (tire plug) are sticking out of the tire 1/2" to 1".
4. Pull the T-handle Insert Tool straight out of the hole until the tip is just even with the tire tread then cut the exposed tire plug ends just slightly above the tread and remove the installation tool.
5. After airing up the tire to its correct tire pressure spray the tire repaired area with a soapy water and check that the puncture is sealed and not leaking.





ITEM#	ORDERING PART#	PART DESCRIPTION
1	PRT8630-01	T-HANDLE INSERT TOOL
2	PRT8630-02	T-HANDLE SPIRAL PROBE TOOL
3	PRT8630-03	HEX KEY
4	ATD-86303	7.5" TIRE REPAIR STRING (TIRE PLUG) (30)
5	ATD-86302	LUBRICANT
6	PRT8635-CASE	BLOW MOLDED CASE