



Auto Custom Carpets, Inc.

Product Guide

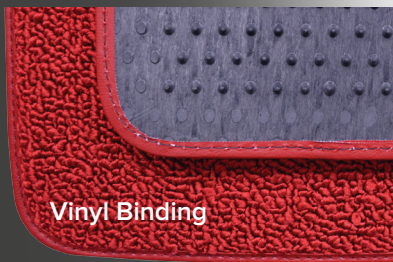
Floor Mats



Floor mats can improve your interior's look with very little effort. There are a lot of companies making floor mats these days but with limited colors and options. What sets ACC floor mats apart is they are manufactured in all the same true automotive-grade materials and colors as our carpet flooring products. This allows us to insure a great match. All ACC floor mats are die cut based on your year, make, and model vehicle, insuring a perfect fit. Don't settle for a set of floor mats that are only close in color to your vehicle's carpet, choose the ACC brand floor mats that will complete your vehicle's interior.



Serge Binding



Vinyl Binding



- > Enhances and Protects Carpet
- > Two, three, and four-piece sets
- > Nibbed backing for non-slip
- > Vinyl or serge binding
- > Grommets standard on some models
- > Over 230 licensed embroidered logos
- > Carpet cargo mats also available
- > Custom fit based on your year, make, & model



MOPAR, JEEP, DODGE, HEMI, PLYMOUTH, RAM, SRT, CHRYSLER, AMERICAN MOTORS and related logos, vehicle model names and trade dress are trademarks of FCA US LLC and used under license by Auto Custom Carpets, Inc. ©2015 FCA US LLC



MOPAR, JEEP, DODGE, HEMI, PLYMOUTH, RAM, SRT, CHRYSLER and related logos, vehicle model names and trade dress are trademarks of FCA US LLC used under license by Auto Custom Carpets, Inc. ©2015 FCA US LLC



Auto Custom Carpets, Inc.

World's Leading Manufacturer of Automotive Replacement Carpet

PROUDLY MADE  **IN THE USA**

Carpet Flooring

**Standard
Materials**

Nylon



Molded Carpet

- Molded carpets are typically in vehicles from the early 1960s to current years
- Molded for a perfect fit (some trimming will be required)
- Padding comes standard on most
- Original style heel pad
- Additional items including kick panels, door panels, wheel wells, tail gate pieces, etc. also available
- Finest fit and materials available in the aftermarket
- Easy installation
- Six materials available for molded carpets
- Matching floor mats available

GEO | Honda | Hyundai | Infiniti | International | Isuzu | Jeep | Kia | Lexus | Lincoln | Mazda | MG | Mercedes-Benz | Mercury | Mini | Mitsubishi | Acura | American Motors | Austin Healey | BMW | Buick | Cadillac |

Mass Backing

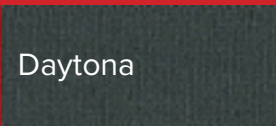
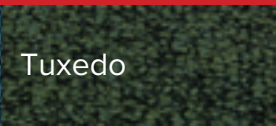
- Backing choice
- Rubber-like material
- Increases moldability of carpet
- Provides sound control
- Can be added to most carpet materials

Mass backing is a black, rubber-like material that can be added to most molded carpets. It provides an additional layer of heat and sound control and also increases mold ability.



Vacuum Molded Vinyl

- Material choice
- Heavy Duty
- Long Lasting
- Vacuum Molded
- Available in 4 colors
- Great for your truck, Jeep, SUV, utility vehicle, taxi cab, or police car



Tuxedo

GrosPoint

Cutpile

TruVette

Daytona

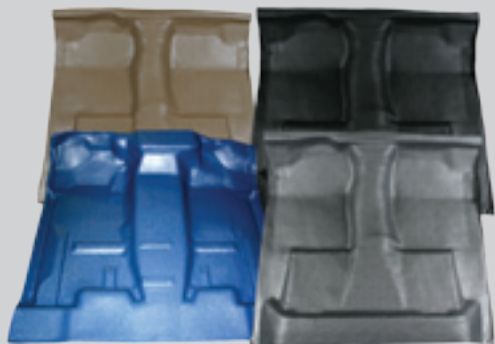
Loop



Cut & Sewn Carpet

- Cut & Sewn carpets are typically in vehicles before 1960
- Die-cut from handmade dies
- Vinyl or serge-bound edges
- Hand sewn heel pad
- Padding comes standard on most
- Matching floor mats available

Chevrolet | Chrysler | DeSoto | Dodge | Eagle | Edsel | Fiat | Ford | GMC
 | Nissan | Oldsmobile | Plymouth | Pontiac | Porsche | Renault | Saturn | Subaru | Sunbeam | Suzuki | Toyota | Triumph | Volkswagen | Volvo



Ultra Plush Essex Material

- Ultra plush
- Upgrade option
- 3/8" pile height
- Cutpile is 14 ounces of yarn per square yard; Essex is 22.5 ounces of yarn per square yard



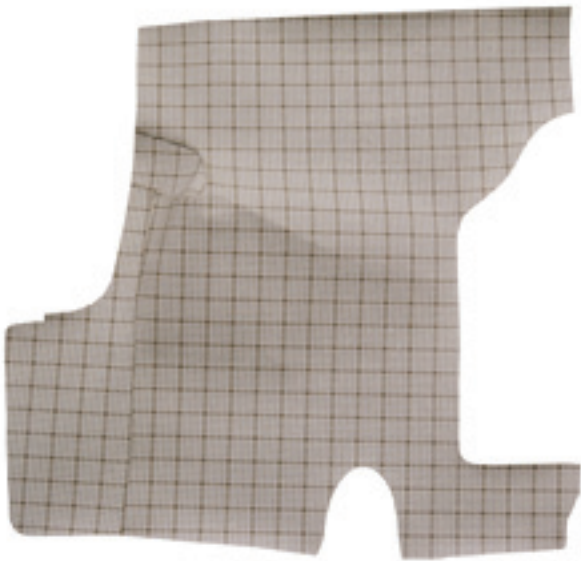
Cutpile

Essex

Trunk Mats & Sound Deadeners

TRUNK MATS

- Die Cut or Molded
- Six materials
- Over 25 patterns



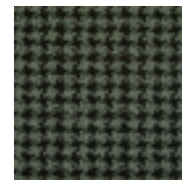
(additional pattern choices available on our website)



03 Gray Herringbone



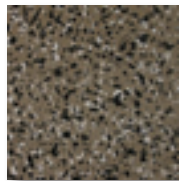
04 Crowsfeet



05 Aqua Houndstooth



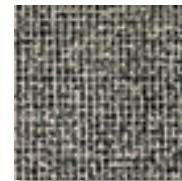
08 Mustang Plaid



18 Mustang Spatter



21 Large Plaid



26 Black & Gray
Basket Weave



34 Ford Spatter

SOUND DEADENERS

- Adds a layer of insulation
- Available in three materials:
 - EVA** - 1/8" average thickness
 - Foil with pad** - 1/4" average thickness
 - Mastic with pad** - 3/8" pad with a thin 1/16" layer of Asphaltic Mastic and paper backing

