



2650-972A

## INSTALLATION INSTRUCTIONS

# 2 1/16" DIA. ELECTRIC TACHOMETER



### IMPORTANT

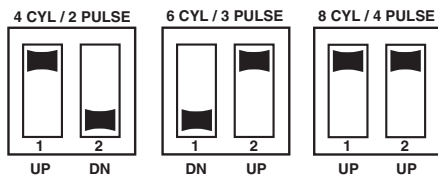
This tachometer is factory calibrated to operate on 8 cylinder engines. For 4 or 6 cylinder engines, it is necessary to make the proper adjustments to adapt this tachometer to your cylinder range.

### NOTE

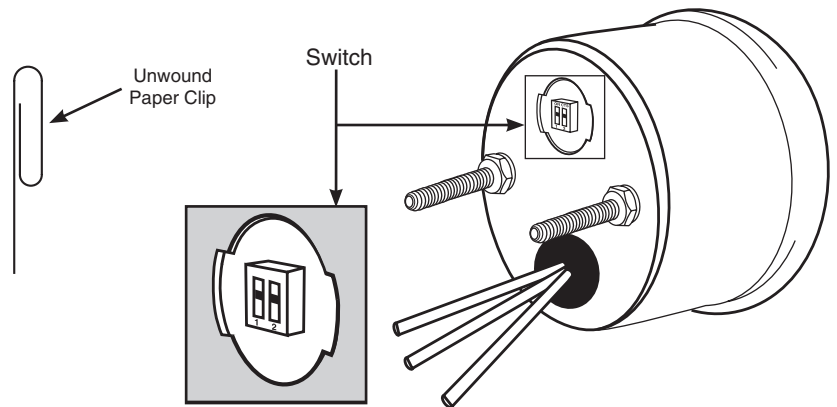
This tachometer has an air core meter. The tach pointer may not always rest at zero. This is normal. When engine is started, pointer will position on the correct RPM.

## Calibration

To change the calibration of the tachometer, remove the twist in light socket assembly to access the cylinder select switches. The switches are located to the left of the light hole. Use a small screwdriver or an unwound paper clip to change the switch settings.

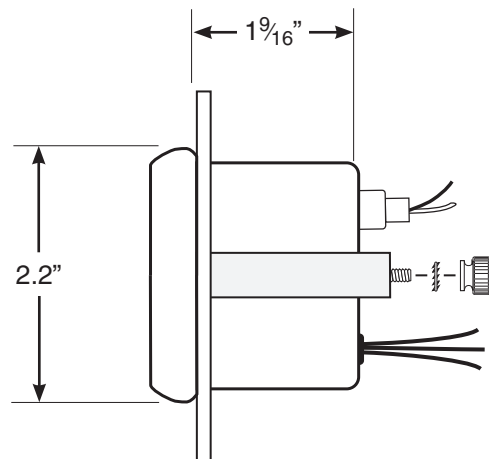


- 4 CYL. - Switch One up, Switch Two down.
- 6 CYL. - Switch One down, Switch Two up.
- 8 CYL. - Both switches up.

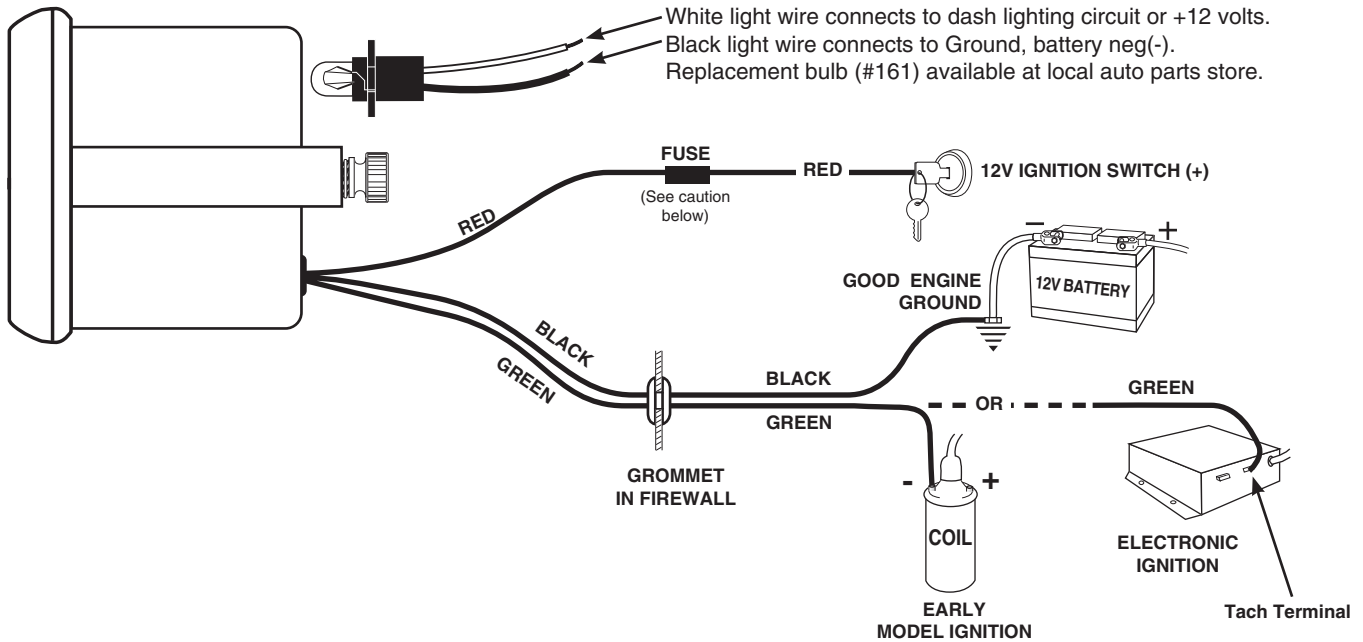


## Mounting

- Can be mounted in a 2 1/16" dia. hole in the dashboard. (Take care that hole is not cut too large.) Can also be mounted in a standard aftermarket street rod panel.
- Cut a 3/8" dia. hole in the firewall where the tachometer wires will be routed. Place rubber grommet in hole and route the connector wires through to the engine compartment.
- Connect the tachometer wires as shown below.
- Secure the tachometer in the dashboard using the bracket, thumbnuts and lockwashers provided.



# Wiring



## **CAUTION!**

As a safety precaution, the +12V terminal of this product should be fused before connecting to the 12V ignition switch. We recommend using a 1 Amp, 3AG fast-acting type cartridge fuse (Littlefuse® # 312 001 or an equivalent).

## **WARNING**

Warranty will be void if connected to coil when using an aftermarket ignition box such as, but not limited to products from the following manufacturers: MSD, Crane, Jacobs, Mallory, Holley, Etc.. Prior to installation of your tachometer, check with the ignition box manufacturer for recommended tachometer signal location.