

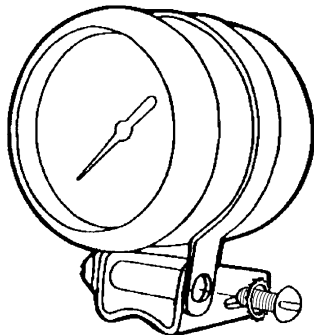
INSTRUCTIONS FOR 2 1/16" GAUGE MOUNTING CUPS

For use with any mechanical or electrical gauge.

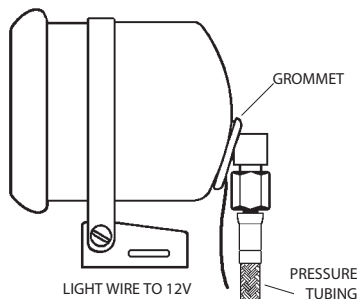
2650-1169



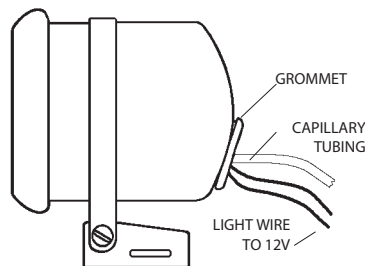
ASSEMBLY



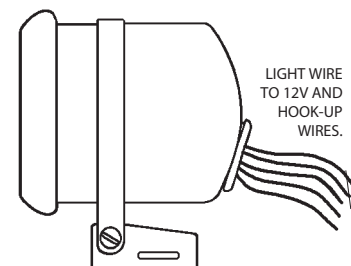
MECHANICAL PRESSURE



MECHANICAL TEMPERATURE



ELECTRICAL



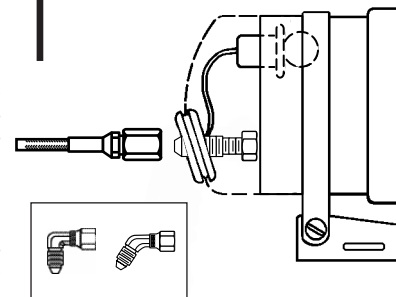
INSTALLATION:

1. Install mounting base using 2 sheet metal screws or stainless steel hose clamp (not included).
2. Attach strap loosely to base using (2) 10-32x1/2 screws with lockwashers and threaded spacer.
3. Slide the mounting cup into the mounting strap and tighten the strap mounting screws.

NOTE: When using 2121, 2203 or 2204 cups, studs on white plastic case must be shortened approximately 1/4 to 3/8".

For some applications it may be necessary to use a -4AN elbow fitting (pictured on right). Either a 90° elbow fitting (Auto Meter model number 3274) or 45° elbow fitting (Auto Meter model number 3273) can be used in the application. These fittings can be purchased through Auto Meter or your local high performance dealer.

Note: To make installation easier install the hose kits and the elbow fittings before installing the cup.



Learn more about gauges and dashboards we have.