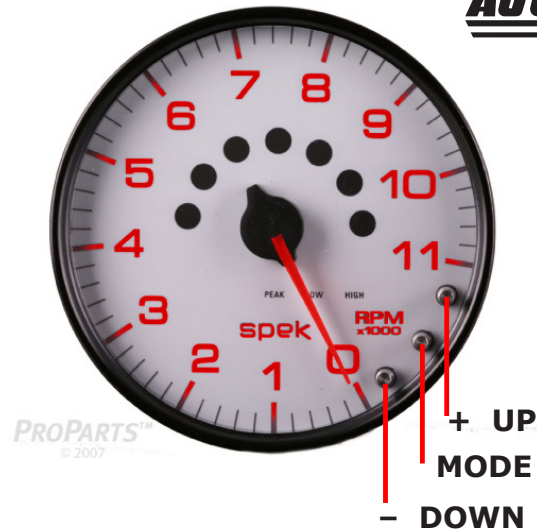


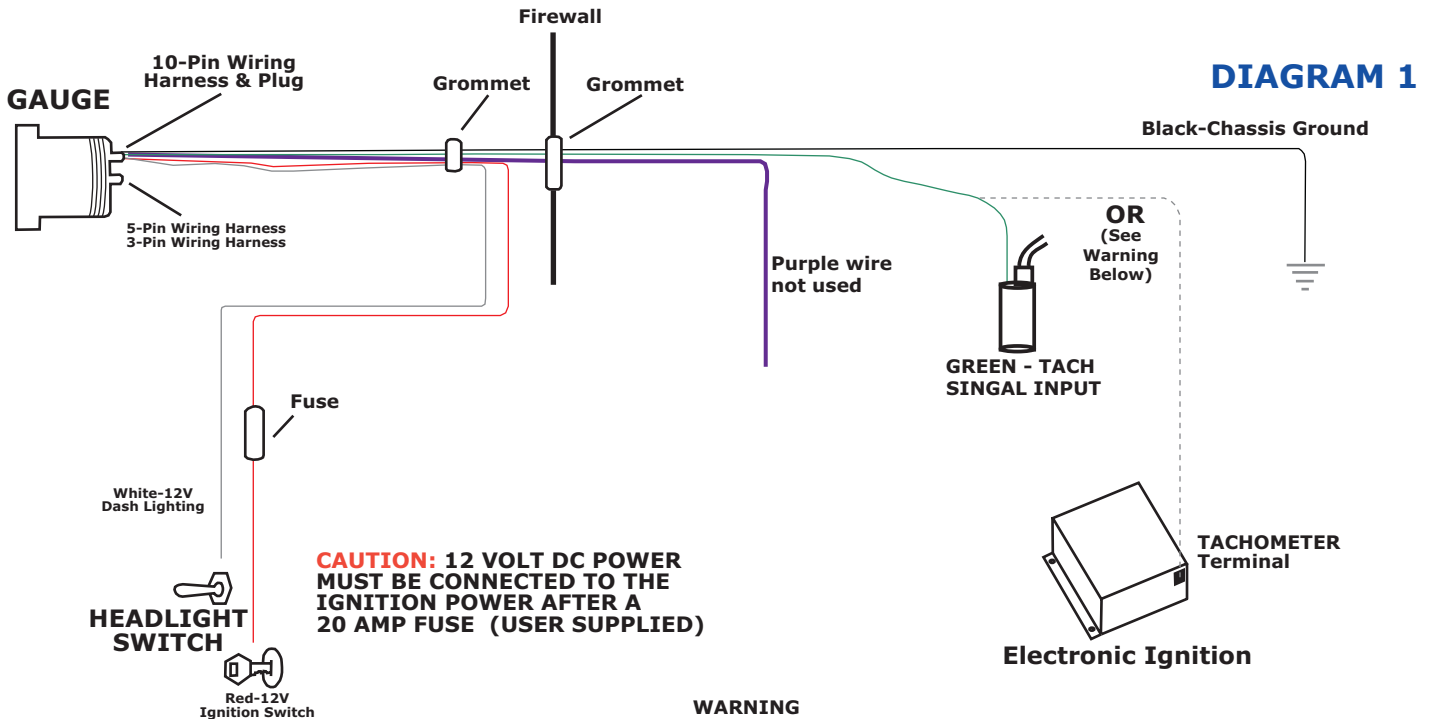
Spek Pro Pro Racing Tachometer With Pit Road Speed Instruction

Auto Meter GAUGE WORKS



WIRING:

- RED:** SWITCHED, KEY ON POWER.
- BLACK:** CHASSIS, OR ENGINE GROUND.
- GREEN:** TACH SIGNAL
- WHITE:** DASH LIGHTS DIMMING CIRCUIT (POWER CONTROLLED, NOT GROUND CONTROLLED)
- PURPLE:** NOT USED ON TACHOMETERS WITH PIT ROAD SPEED.



U.S PATENT #7,278,749
US Patent # 7,612,660
Additional Patents Pending

Programming Basics:

The programming is achieved in steps, using the middle button on the face of the gauge. Think of the middle button, as a "Mode" button. The Left & Right buttons are basically "Down" & "Up" buttons. Please note, that each push & release of the buttons require about a 1 second push to activate. A quick tap may not register to the gauge, that you have pushed the button. Programming requires no tach signal going to it. If the tach does not go into a menu or submenu, cycle power off and then back on.

Spek Pro Pro Racing Tachometer With Pit Road Speed Instruction

MAIN MENU	SUBMENU
PRESS "MODE" BUTTON TO PROGRAM LEVEL. THEN PRESS BOTH CENTER AND LEFT OR CENTER AND RIGHT BUTTONS FOR FIVE SECONDS TO ENTER SUBMENU	
NORMAL/PEAK/PEAK RESET	OPTION: SELECT PPR (PULSES PER REVOLUTION)
PEAK PLAYBACK	OPTION:RESTORE FACTORY DEFAULT
HIGH RED-LINE SETTING	OPTION: PROGRAM HIGH RED-LINE SHIFT LIGHTS
LOW YELLOW-LINE SETTING	
COLOR SCHEME	OPTION A:DEMO MODE OR OPTION B:POINTER BRIGHTNESS
SHIFT LIGHT BRIGHTNESS	OPTION: SET DIAL BACKGROUND BRIGHTNESS OPTION: ADJUST POINTER TO ZERO (0)

PPR Calibration, Cylinder Selection:

To enter into calibration mode, you will need power applied to the white wire (illumination wire). With power on, push and hold the MODE and +UP buttons at the same time. The pointer will begin to "step" upward. Let go of the buttons 2 seconds after the pointer stops stepping upward. The pointer will move to the current PPR setting. You may use the +UP or the -DOWN buttons to raise or lower the pointer to the desired PPR. When finished, you may push & release the MODE button to exit and save your settings

CYLINDERS	PULSES PER REVOLUTION (PPR)	SETTING
2	1	1000
4	2	2000
6	3	3000
8	4	4000
10	5	5000
12	6	6000

Spek Pro Pro Racing Tachometer With Pit Road Speed Instruction

Adjust Pointer to Zero

With power applied to the white wire and the tachometer powered on, press and release the MODE button 5 times. The PEAK, LOW, and HI indicators will be off and the pit road speed lights will be cycling. Press and hold both the MODE button and + UP button until the pointer stops climbing, and the pit road lights stay on solid then immediately release. The pointer will go to "0". Use the + UP button and the - DOWN button to adjust the pointer to move it to the center of the tick mark. You may press and release the MODE button to exit and save.

Lighting:

Gauge Illumination Color Set

With power on, press & release the center MODE button 4 times. The PEAK, LOW, and HI indicators and the gauge illumination will flash. Use the + UP button to move the pointer up and use the - DOWN button to move the pointer to the desired color. The pointer will sweep stopping incrementally on each color. You may press & release the MODE button twice to exit and save.

Illumination Brightness (when no power from dash lighting is used)

With power on, press the center "mode" button 5 times. The PEAK, LOW, and HI indicators will be off and the pit road speed lights will cycle. Press and hold both the - DOWN button and the MODE button until the pointer stops climbing, then continue to hold these buttons until the shift lights/pit road lights stop flashing (about 2 seconds after the pointer stops climbing). Once there, release the two buttons. Use the + UP button to make the lighting brighter and use the - DOWN button to dim the illumination. You may push & release the MODE button to exit and save.

Changing Lit Pointer Brightness

With power on, press & release the MODE button 4 times. The PEAK, LOW, and HI indicators and the gauge illumination will continue to flash. Press and hold both the - DOWN button and the MODE button until the pointer stops climbing. Hold the buttons for an additional 2 seconds (or until the indicators quit flashing) and then release the two buttons. Use the + UP button to make the lighting brighter and use the - DOWN button to dim the illumination. You may press & release the MODE button to exit and save.

Shift Light & Peak Recall:

High Redline / Shift Light Setting

With power on, press and release the MODE button twice. The HI indicator will illuminate and the pointer will go to the current redline setting. Use the + UP button to move the pointer higher and use the - DOWN button to move the pointer lower to the desired redline shift point. You may press & release the MODE button 4 times to exit and save.

Shift Light & PRS Light Brightness

With power on, press & release the MODE button 5 times. The PEAK, LOW, and HI indicators will be off and the pit road speed lights will cycle. Use the + UP button to make the lighting brighter and use the DOWN-button to dim the illumination. You may push & release the MODE button to exit and save.

Peak/Erase

With power on, press & release of the MODE button one time. The PEAK indicator will illuminate. The pointer will move to the peak RPM reading. If no button is pushed for 4 seconds, the gauge will default back to the current RPM reading. To clear the peak, push the - DOWN button while the peak is displayed. The Pointer will sweep to full scale and then return to the current RPM indicating it has cleared the peak memory.

Setting the Pit Road Speed Indicators & Ranges

Sweet Spot Pit Road Speed RPM Set (GREEN)

This is used to set the green range start point while the diver is following the pace car under normal operation. While following the pace car, press and hold the + UP button for 1 second. The gauge will set the green range start point to the current RPM.

Sweet Spot Range Set (GREEN)

With power on, press and release the MODE button three times. The LOW indicator will illuminate and the pointer will go to the current LOW setting. Press and hold both the MODE button and the UP+ button until the pointer stops climbing. Hold the buttons for an additional 2 seconds and then release the two buttons. The green Pit Road Speed band will be illuminated & flashing indicating that you are in the correct mode. Use the UP+ button to move the pointer higher and use the DOWN-button to move the pointer lower. Every thousand RPM equals 100 RPM on the range. (EX: Set the pointer to 4000 RPM will

Spek Pro Pro Racing Tachometer With Pit Road Speed Instruction

give you a 400 RPM window for the green pit road speed band) You may press & release the MODE to save changes and return to normal operation. If no button is pushed for 30 seconds, the gauge will save the changes and default back to the current RPM reading.

Low Pit Road Speed Range Set (YELLOW)

With power on, press and release the MODE button three times. The LOW indicator will illuminate and the pointer will go to the current low set point. Press and hold both the – DOWN button and the MODE button until the pointer stops climbing. Hold the buttons for an additional 2 seconds and then release the two buttons. The yellow Pit Road Speed band will be illuminated & flashing indicating that you are in the correct mode. Use the + UP button to move the pointer higher and use the – DOWN button to move the pointer lower. Every thousand RPM equals 100 RPM on the range. (EX: Set the pointer to 4000 RPM will give you a 400 RPM window for the yellow pit road speed band) You may press & release the MODE button to save and exit.

Low Set (YELLOW)

With power on, press and release the MODE button three times. The LOW indicator will illuminate and the pointer will go to the current low set point. Use the UP+ button to move the pointer higher and use the DOWN-button to move the pointer lower to the desired RPM. You may press & release the MODE button until the gauge returns to normal operation to save changes. If no button is pushed for 30 seconds, the gauge will save the changes and default back to the current RPM reading.

Penalty Light Pit Road Speed RPM Range (RED)

With power on, press and release the MODE button two times. The HI indicator will illuminate and the pointer will go to the current low set point. Press and hold both the +UP button and the MODE button until the pointer stops climbing. Hold the buttons for an additional 2 seconds and then release the two buttons. The red Pit Road Speed band will be illuminated & flashing indicating that you are in the correct mode. Use the + UP button to move the pointer higher and use the – DOWN button to move the pointer lower. Every thousand RPM equals 100 RPM on the range. (EX: Set the pointer to 4000 RPM will give you a 400 RPM window for the yellow pit road speed band) You may press & release the MODE button to save and exit.

Demo Mode

With power on, press and release the MODE button 4 times. The PEAK, LOW, and HI indicators and the gauge illumination will flash. Press and hold both the MODE button and the + UP button until the pointer stops climbing, and the indicators & illumination stop flashing, and immediately release the buttons. The tachometer will start to automatically start sweeping the pointer up & down, and going through several colors. To Exit demo mode, press and release the MODE button one time.

Factory Reset

With power on, press and release the MODE button one time. The pointer will go to the current peak RPM. Press and hold both the MODE button and the + UP button until the pointer stops climbing. Hold the buttons for an additional 2 seconds and then release the two buttons. The pointer will sweep back and forth and the factory settings will be restored.