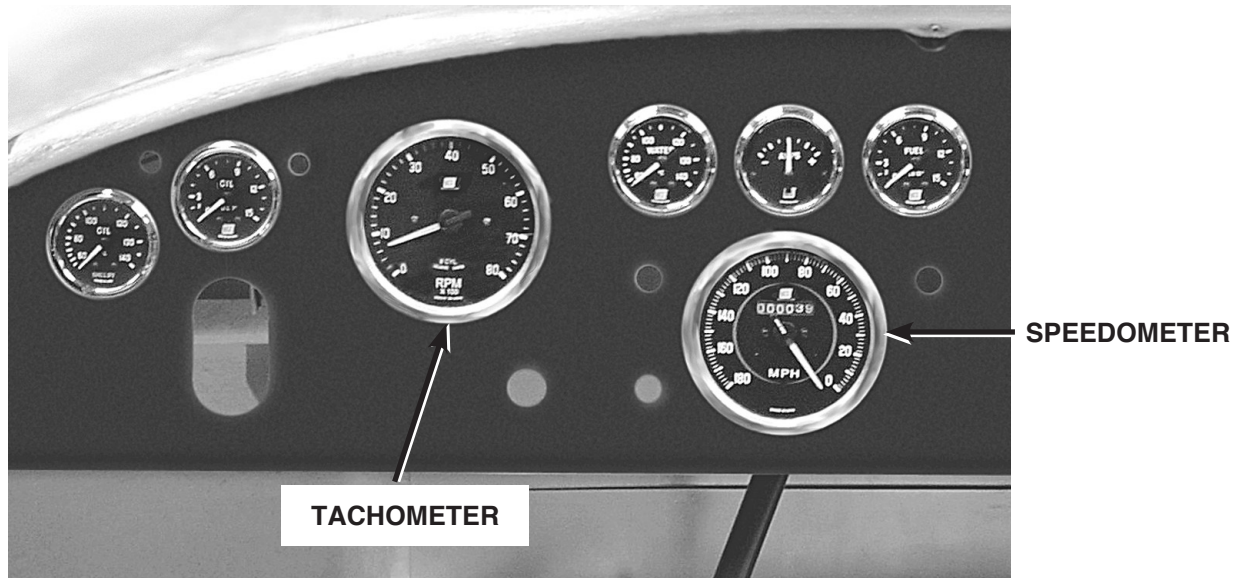


4 INCH SPEEDOMETER AND TACHOMETER INSTALLATION INSTRUCTIONS

2650-951X-10



Mounting



CSX-3022 Original Layout

Preliminary Steps

1. Read instructions thoroughly for the gauge(s) you purchased. The installation of each gauge requires the expertise of a trained mechanic. Please consult a qualified technician if you have not had training on instrument installation.
2. Consult your vehicle's repair manual to locate the appropriate port in the firewall for the gauge you are installing. Also locate the appropriate 12V ignition switch wiring or fuse box.
3. Determine the best route for wires and speedometer cable to follow. Choose a path free of hazards of moving parts or hot engine components.
4. Determine correct mounting location illustrated above. **Note: It is important that each gauge be placed as indicated.** Each gauge is designed with its own hardware to fit the designated position.
5. All efforts have been made to determine the correct gauge location for Shelby Cobras. Although many cars were built differently (special orders), the gauge locations indicated above are logical and vintage original photos of CSX 3022 indicate this layout. We suggest you follow this pattern. In order to retain our suggested original integrity, follow the instructions correctly for the gauge(s) you purchased.
6. Assemble tools and parts required for installation.
7. Disconnect positive (+) battery cable from the battery during gauge installation.
8. See each gauge installation instructions on the following pages.

4 inch Speedometer - Model 201005

The speedometer is installed to the far right of the steering column under the three gauge cluster in the center of the car (see photo). Use only the installation components provided with the gauge.

NOTE: This speedometer is calibrated for 1,000 cable revolutions per minute equal to 60 miles per hour.

1. The light bulb assembly comes installed on the rear gauge housing.
2. Pull the speedometer cable through the mounting hole in the dash. Attach the speedometer cable to the speedometer. The threads on the back of the speedometer are 5/8 -18 thds.
3. Attach lighting wires through the gauge hole to the bulb leads. The white is (+) positive and the black is (-) negative.

4. Hold the bracket up behind the dash and align the studs of the gauge with the bracket. When the bracket is placed over the gauge case studs, install a star lock washer and thread a thumbnut onto each stud. As you tighten the thumbnuts make sure the gauge is aligned properly.
5. Position the speedometer cable away from hazardous moving parts or hot engine components to the point of insertion on the transmission.
6. Ford Top Loader transmissions can have speedometer drives on either side of the transmission. Additionally, the speedometer drive can rotate in both directions depending on the configuration. If the speedometer fails to indicate speed when the car is driven, the speedometer cable is rotating in the wrong direction. Speedometer cable reversing adapter, Auto Meter #990340, will work in this application.
7. Reconnect the battery and inspect installation for binding, sharp turns in the cable.

4 inch Tachometer – Model 201004

The tachometer is installed directly to the right of the steering column (see photo). Use only the installation components provided with the gauge.

NOTE: This tachometer is calibrated to work with an eight cylinder engine. This tachometer will work with most factory and aftermarket ignitions except magnetos.

1. The light bulb assembly comes installed on the rear of the gauge housing.
2. Attach lighting wires to the bulb leads. The white is (+) positive and the black is (-) negative.

3. Using spade connectors, attach negative ground (neg. ground), power (+12 vdc), and ignition signal (ignition) wires to the back of the tachometer. The back of the tachometer has male spade connectors with raised lettering in the plastic case identifying each connection.
4. Hold the bracket up behind the dash and align the studs of the gauge with the bracket. When the bracket is placed over the gauge case studs, install a star lock washer and thread a thumbnut onto each stud. As you tighten the thumbnuts make sure the gauge is aligned properly.
5. Position all wires away from hazardous moving parts or hot engine components.

