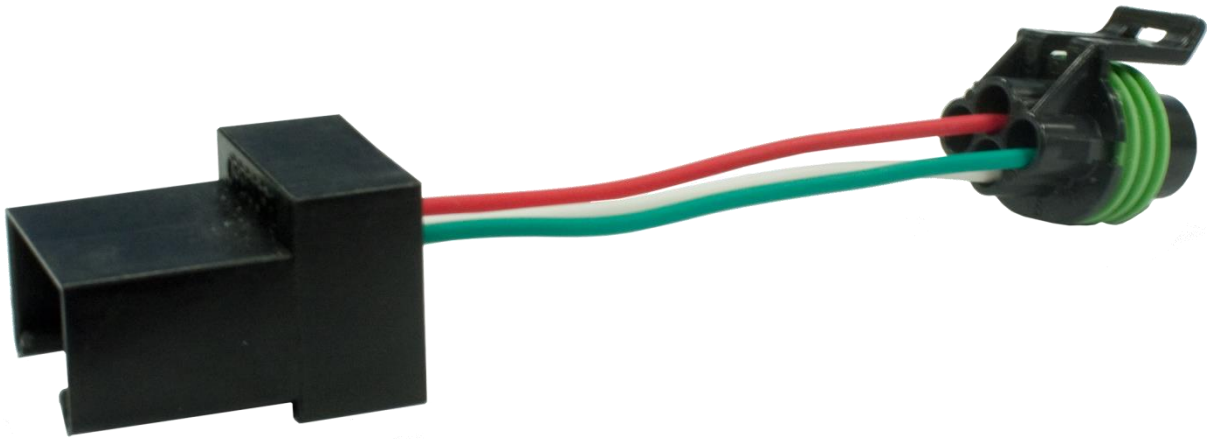




***All previously installed resistors or diodes to limit over pressure codes must be removed before installing this product.***



## **Pressure Transducer Upgrade Kit**

*2000-2007 48RE, 47RE, 46RE, 44RE, 42RE, (A500, A518, A618)  
Transmissions*

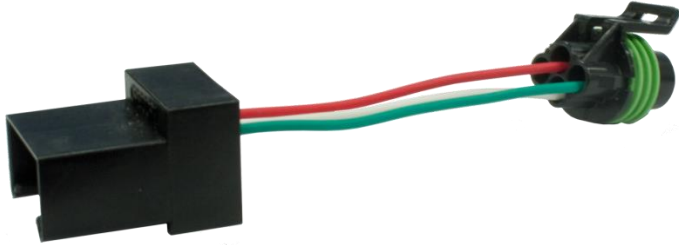


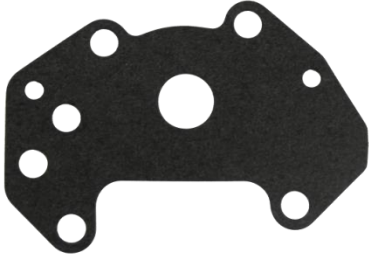
<b>P/N#</b>	<b>1060602</b>
-------------	----------------

<b>P/N#</b>	<b>1060605</b>
-------------	----------------

**PLEASE READ ALL INSTRUCTIONS BEFORE INSTALLATION**

## **KIT CONTENTS:**

Please check to make sure that you have all the parts listed in this kit **before** you start the disassembly of your vehicle.

<b>1600365</b>	<b>4617219</b>
	
<i>Pressure Transducer Adapter</i>	Clip for metal transducer
<b>QTY: 1</b>	<b>QTY: 1</b>
<b>56041403AA</b>	<b>4617216</b>
	
Metal pressure transducer	Governor Body Gasket
<b>QTY: 1</b>	<b>QTY: 1</b>

### ***WHY USE THIS PRODUCT?***

One of the leading causes of transmission faults with the 47RE and 48RE Dodge transmissions is failed governor pressure transducers. The BD pressure transducer adapter addresses this issue by allowing the original sensor to be replaced by a much more reliable and durable sensor which can handle higher transmission line pressures without failure.

### ***This adapter is plug and play - no soldering or splicing required!***

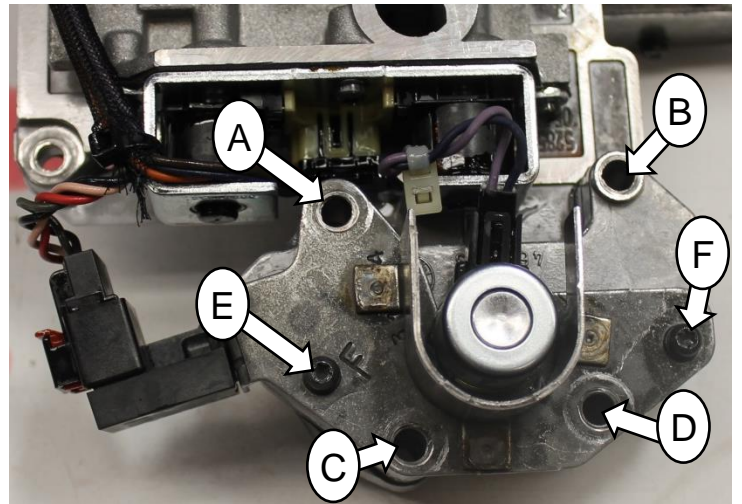
Transducer problems are especially prevalent on performance transmissions which run higher line pressures. The 1996-1999 47RE transmissions utilized a very rugged and reliable metal pressure transducer rather than the lower quality plastic transducer used in the late models. The BD pressure transducer adapter allows late model transmissions to use this early sensor. The adapter has an electronic circuit built in that converts the sensor pressure signal to the correct range and even stops fault codes in applications running higher than stock line pressures. Additionally, the circuit has its own built-in temperature sensor for improved reliability.

**INSTALLATION**

**VEHICLE SHOULD BE SAFELY SECURED BEFORE INSTALLATION.**

1. Raise and properly support vehicle.
2. Drain transmission fluid into a suitable, clean container.
3. Remove transmission oil pan.

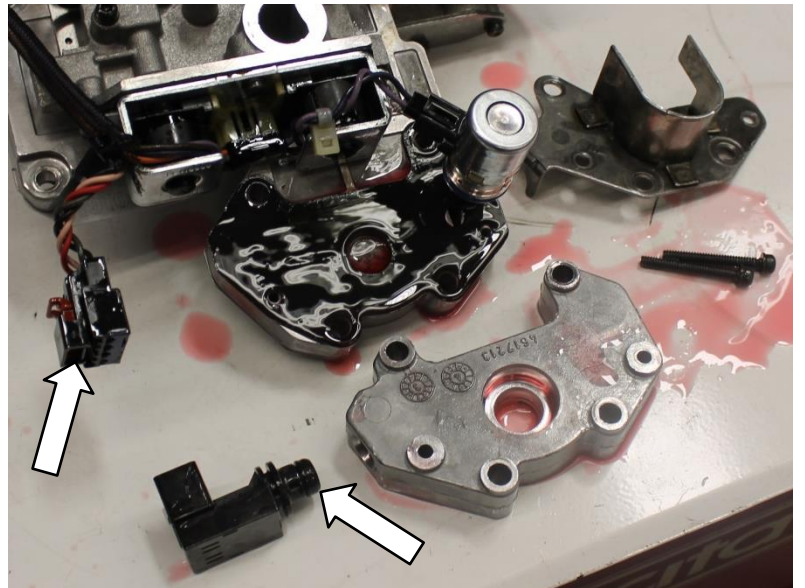
4. Remove the four bolts connecting the governor housing to the transmission (A-D).
5. Unbolt and remove the governor pressure solenoid, sensor retainer bracket and housing. (E&F)



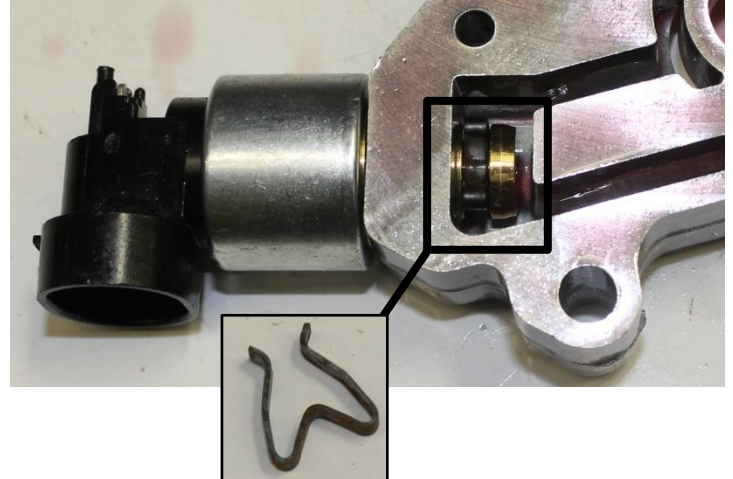
6. Disconnect electrical connector from the old plastic pressure transducer.

NOTE: Pulling back on the red locking tab of the connector will help release the connector.

7. Remove the old pressure transducer from the governor housing.



8. Lubricate the O-ring on the new sensor and insert into the governor housing.

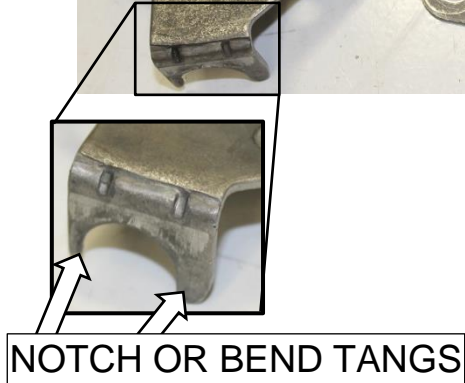
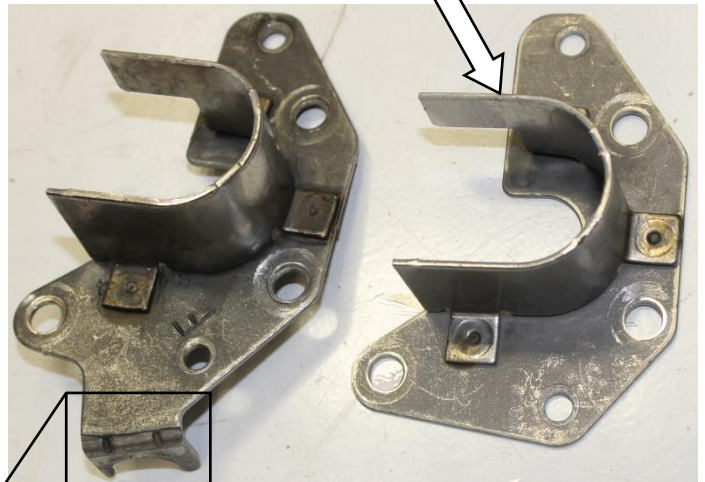


9. Install the metal retainer clip to hold the sensor in the housing.

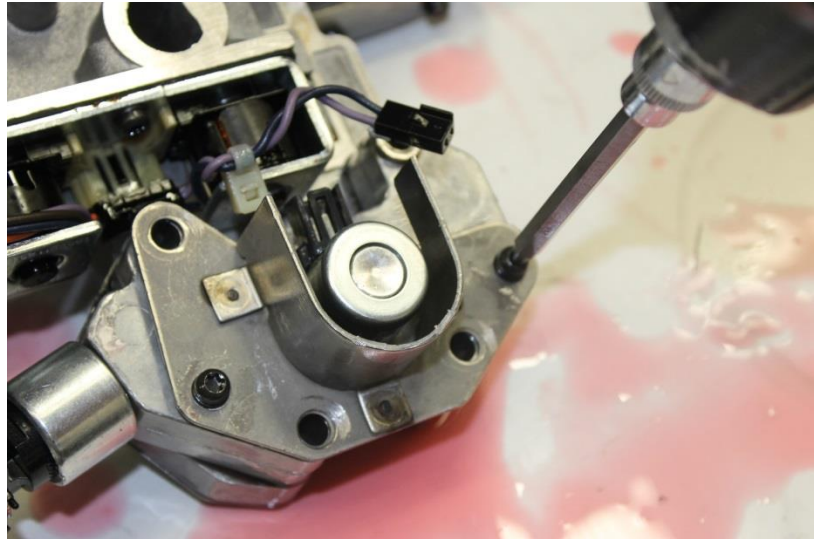
10. The metal retainer bracket will not fit around the new sensor, so the bracket can either be notched with a cutting wheel or the two tangs may be bent out of the way.

*Alternatively, a bracket from a 1996-1999 47RE transmission can be utilized which will not require any modification.*

Alternative bracket from 1996-1999

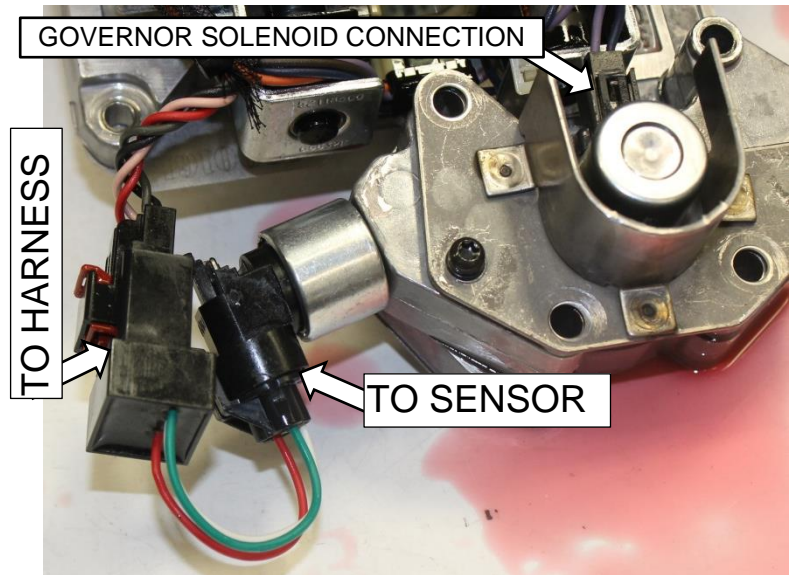


11. Replace the old governor solenoid housing to valve body gasket with the gasket supplied in this kit. (P/N# 4617216).
12. If purchased a 1060605 kit, replace the old governor solenoid with one provided in the kit.

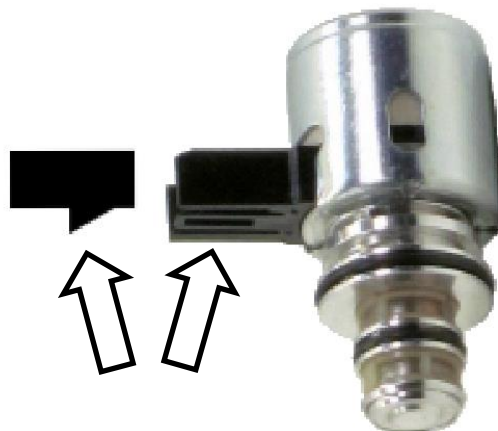


13. Install housing with solenoid, sensor and bracket to the valve body. Tighten attaching screws to 50in-lb.

14. Reconnect governor solenoid connector if it was disconnected during the install.
15. Connect the BD transducer adapter to the sensor and to the transmission wiring harness.



If installing the STOCK governor solenoid, the latch tab will point towards you.  
 If installing an UPGRADE governor solenoid, the latch tab will point away from you.



16. Reinstall the transmission oil pan. Replace gasket if required. Tighten attaching bolts to 125in-lb.
17. Refill the transmission with fluid to factory specifications. Start engine and check fluid level.
18. Shift through all gears a few times to ensure valve body is filled with fluid, then road test vehicle.
19. For further detailed instructions or general transmission diagnosis and repair instructions, we recommend purchasing the appropriate ATRA transmission repair and diagnosis manuals.