

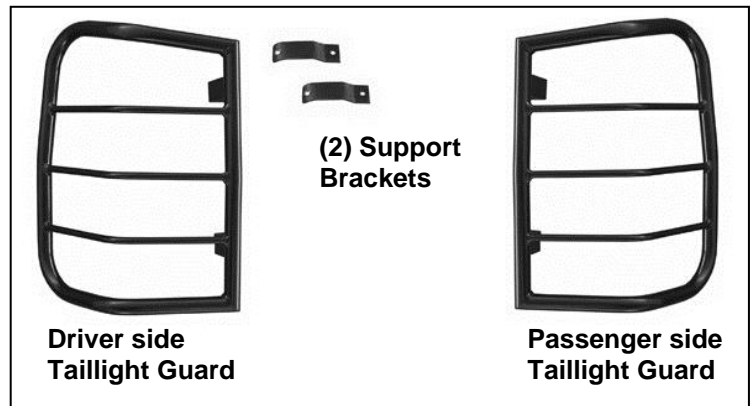


INSTALLATION INSTRUCTIONS

**TAIL LIGHT GUARD FOR HONDA PILOT 09-10
PART # 7H1409SS/7H1409A**

PARTS LIST:

| Qty | Description |
|-----|--|
| 1 | Driver/Left side Tail Light Guard |
| 1 | Passenger/Right Tail Light Guard |
| 2 | Support Brackets |
| 4 | 5mm x 35mm Button Head Phillips Screws |
| 4 | 5mm x 18mm OD x 2mm Flat Washers |
| 4 | 5mm Lock Washers |
| 2 | 4-.70mm x 15mm Phillips Head Screws |
| 2 | 4mm x 9mm OD x 1mm Flat Washers |
| 2 | 4mm Lock Washers |

**PROCEDURE:**

- REMOVE CONTENTS FROM BOX. VERIFY ALL PARTS ARE PRESENT. READ INSTRUCTIONS CAREFULLY BEFORE STARTING INSTALLATION. ASSISTANCE MAY BE HELPFUL.**
- Open the rear door and remove the two hex bolts holding the passenger side taillight housing to the vehicle, **(Figure 1)**. The tail light housing is held in place by two pins on the outer edge of the housing and by a metal clip on the bottom, **(Figure 2)**. Hold the tail light housing firmly in your hands and pull it straight back from the body. **IMPORTANT:** Do not use any tools to pry the tail light housing from the vehicle as damage to the plastic housing or vehicle could occur. This is the same procedure required to change a burnt out taillight bulb in the assembly. For more info see owner's manual on replacing taillight bulbs.
- Unscrew the lower alignment pin from the housing and use it to fasten the Support Bracket into place, **(Figure 3)**. **NOTE:** Do not over tighten the alignment pin into the plastic housing or damage may occur.
- Gently push the tail light housing back into place taking care to properly line up all mounting hardware.
- Locate the passenger side Taillight Guard and line up the two mounting tabs with the factory mounts for the taillight housing. Temporarily attach the Guard to the vehicle with (2) 5mm x 35mm Button Head Phillips Screws, (2) 5mm x 18mm OD x 2mm Flat Washers and (2) 5mm Lock Washers. Snug the hardware but do not tighten at this time.
- Hold the guard up to the Support Bracket. With assistance, slowly close the rear door to check the fit and clearance of the Tail Light Guard. The two Mounting Tabs should fit tightly to the edge of the taillight housing. **NOTE:** If the Mounting Tabs or Support Brackets do not fit properly, they can easily be adjusted with a pair of pliers. If you're doing an adjustment, make sure to cover the Mounting Tab or Support Bracket to protect the finish.
- Once all Tabs and Brackets are properly adjusted for fit against the lens, secure the Taillight Guard to the Support Bracket with (1) 4-.70mm x 15mm Phillips Head Screw, (1) 4mm Lock Washer and (1) 4mm Flat Washer, **(Figure 4)**. Check for clearance and alignment once more and then tighten all hardware.
- Carefully close the rear door to make sure the Mounting Brackets do not interfere with the rear door. Adjust mounting tabs and Support Bracket as necessary.
- Repeat steps 2-8 to install the driver side Taillight Guard.
- Do periodic inspections to the installation to make sure that all hardware is secure and tight.
- WARNING:** As with any exterior trim piece, automated car washes are not recommended and may damage the Tail Light Guard and/or the taillight lens. Only hand washing is advised.

To protect your investment, wax this product after installing. Regular waxing is recommended to add a protective layer over the finish. Do not use any type of polish or wax that may contain abrasives that could damage the finish.

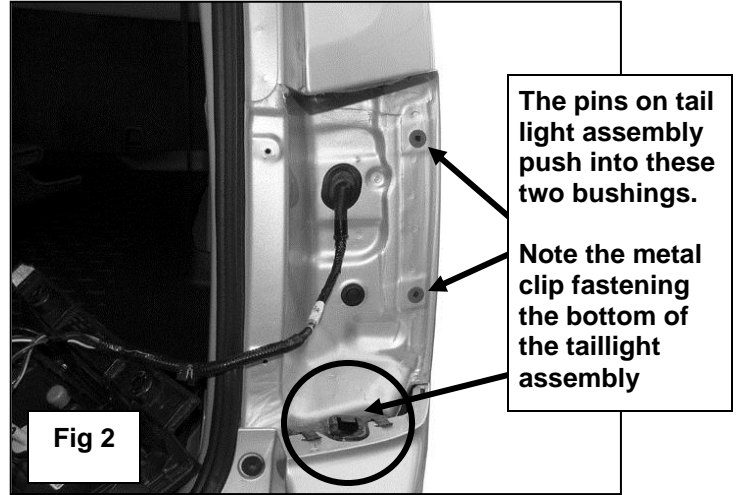
For stainless steel: Aluminum polish may be used to polish small scratches and scuffs on the finish. Mild soap may be used also to clean the Taillight Guard.

For gloss black finishes: Mild soap may be used to clean the Taillight Guard.

PASSENGER SIDE INSTALLATION SHOWN



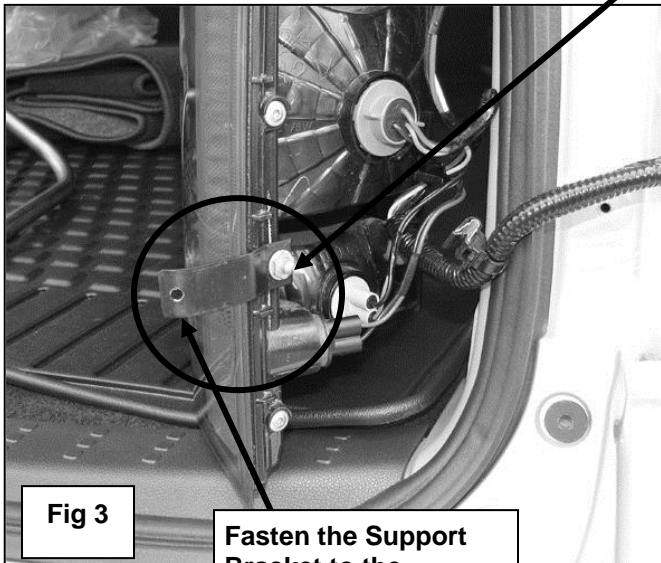
To remove taillight assembly, unscrew the two hex bolts, firmly grasp taillight assembly and pull evenly, straight back from vehicle. Do not pry assembly from vehicle or damage may result.



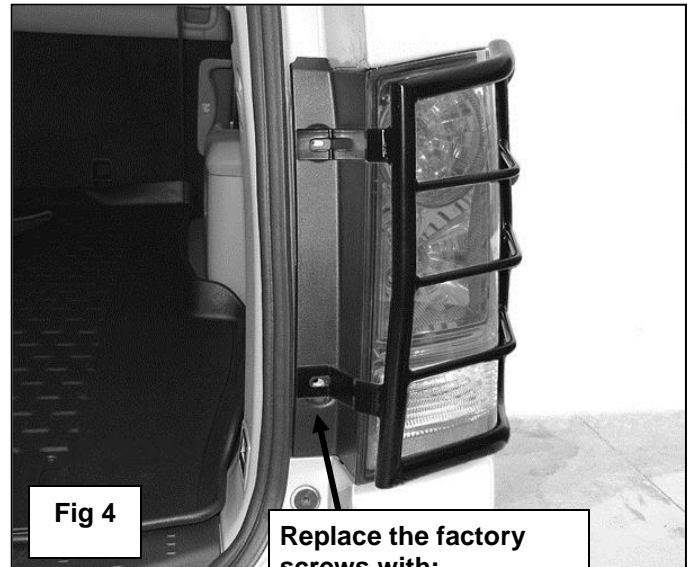
The pins on tail light assembly push into these two bushings.

Note the metal clip fastening the bottom of the taillight assembly

Unscrew the lower factory mounting pin, place the Support Bracket underneath and screw the mounting pin back into location. Do not over-tighten the mounting pin or damage to the taillight housing may result



Fasten the Support Bracket to the Taillight Guard with the supplied:
4-.70mm x 15mm Phillips Head Screw
4mm Flat Washer
4mm Lock Washer



Replace the factory screws with:
2) 5mm x 35mm Button Head Screws
2) 5mm Lock Washers
2) 5mm Flat Washers