

# **INSTALLATION INSTRUCTION**

**Black Bull Bar  
With Skid Plate  
16-17 Jeep Renegade  
PART #BBJPREA-SP**



**BLACK HORSE  
OFF ROAD**

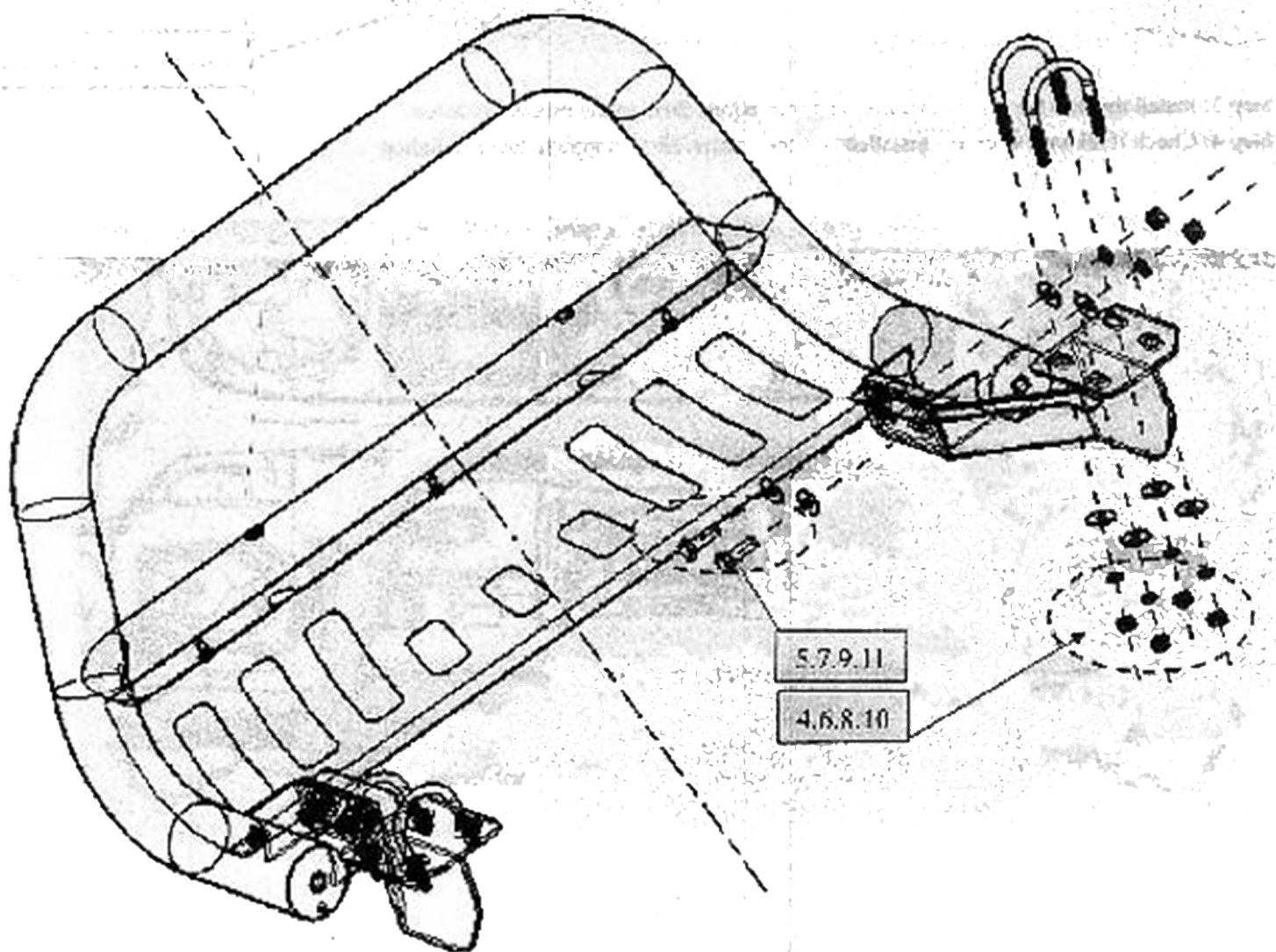
Attention:

- Please read this installation menu before installing this part. Protect your car properly in case there is any scratch might have.
- You may need to periodically to re-tighten all hardware for safety use after installation.
- Installation pictures are only for your reference, there might be some differences between pictures and real parts but no affect for your fitting.

PART LIST

NO.	NAME	QTY	REMARK	NO.	NAME	QTY	REMARK
1	Bull Bar	1		7	Large Washer	8	$\phi 12 \times 30 \times 3.0$
2	Left Bracket 1	1		8	Spring Washer	8	$\phi 10$
3	Right Bracket 1	1		9	Spring Washer	4	$\phi 12$
4	U Bolt	4		10	Hexagon Nut	8	M10
5	Hexagon Bolt	4	M12x35	11	Hexagon Nut	4	M12
6	Large Washer	8	$\phi 10 \times 30 \times 2.5$	12			

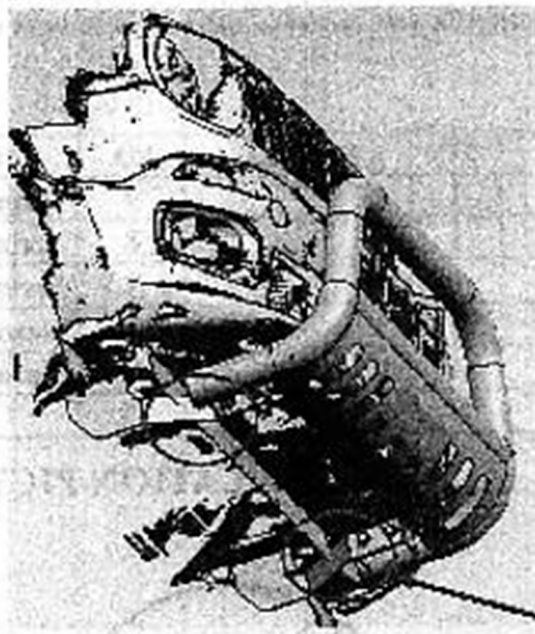
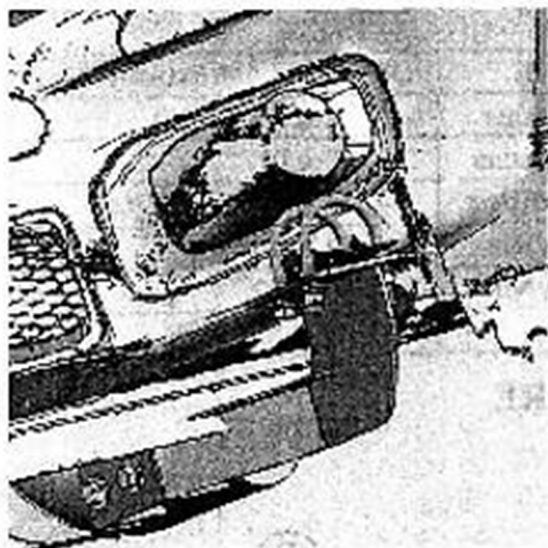
INSTALLATION PICTURE



## INSTALLATION PROCEDURES

Step 1: Refer to Part List to check if all hard ware are included

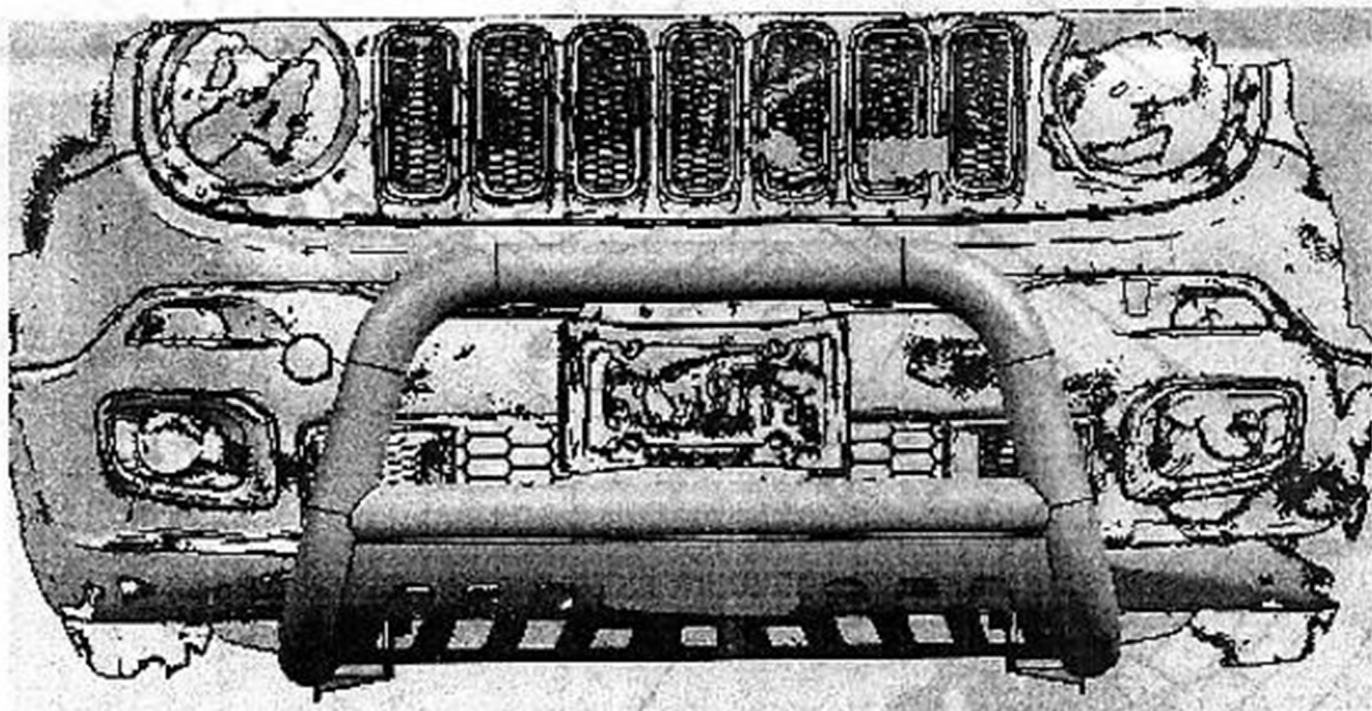
Step 2: Refer to the following picture to install brackets



Cutting notches here.

Step 3: Install the bull bar on the brackets and then adjust them to the proper positions.

Step 4: Check if all hard ware are installed and then fasten all to complete the installation



Disclaimer: Caused due to improper installation initiates or some related problem and losses, are beyond our company's quality assurance.