

## Benefits of Bosch HEPA Premium Cabin Air Filters

- ▶ Comprised of three layers that provide outstanding efficiency in trapping more particles and dust, providing the cleanest air possible with efficiency of 99.97% at 0.3 microns\*.
- ▶ Ultimate protection in trapping allergens, dust and other particulates.
- ▶ Has a Melt-blown Electrostatic layer that provides greater trapping capabilities than non-HEPA cabin air filters.
- ▶ Structural ribs provide additional stability and durability for a stronger cabin air filter.

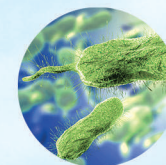
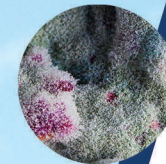
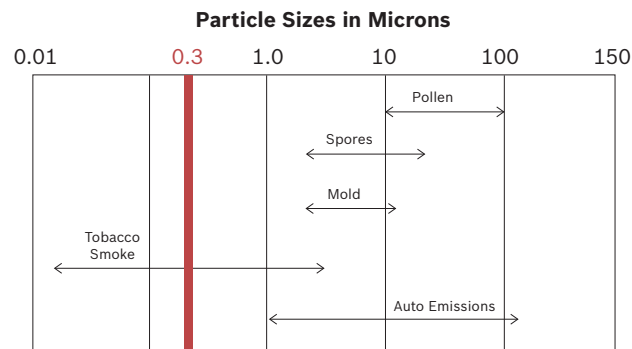


## Changing the cabin air filter

Bosch recommends replacing your Cabin Air filter every 12,000 miles or per your vehicle owners manual. Most cabin air filters take less than 15-20 minutes to change. Instructions for changing a cabin air filter are unique to each car and instructions are included in the box.

### What is a micron?

The average size of the openings between pieces of the filter media are represented in microns. A micron compares the size of common allergens. As a general rule, the smaller micron rating is for a filter, the better the filter is. For example, a 20-micron filter has larger openings than a 5-micron filter. Consequently, the 20-micron filter element will let larger particles pass through the filter than the 5-micron media would. Bosch HEPA Premium Cabin Air Filters provide filtration efficiency of 99.97% at 0.3 microns\*.



# HEPA

## HEPA Premium Cabin Air Filters

**Bosch**  
**Performance**



**BOSCH**  
Invented for life



**BOSCH**  
Invented for life

# HEPA Premium Cabin Air Filters

## Clean Air

### Keep your family breathing clean air

Cabin air filters are designed to clean the air that enters a vehicle through the heating, ventilation, and air conditioning (HVAC) system. Cabin air filters absorb fumes, pollen, dust and pollutants from entering a vehicle and protects passengers from being exposed to these elements, especially those affected by allergies and other respiratory problems. Bosch HEPA Premium Cabin Air Filters are designed and tested to meet High Efficiency Particulate Air (HEPA) standards based on test standard ASTM D2986, and provide filtration efficiency of 99.97% at 0.3 microns\*. This efficiency provides ultimate protection in trapping allergens, dust and other particulates that can enter your vehicle and provides the cleanest air possible for you and your family.



## HEPA Media vs. Non-HEPA Media

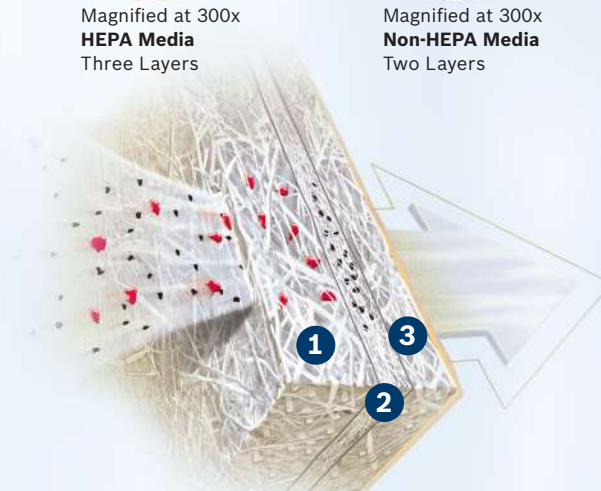
Bosch HEPA Premium Cabin Air Filters have a Melt-blown Electrostatic layer that provides a very dense media with greater trapping capabilities than non-HEPA cabin air filters. Structural ribs provide additional stability and durability for a stronger cabin air filter. Bosch HEPA Premium Cabin Air Filters are also comprised of three layers (a support layer, the HEPA layer and a static cotton layer) while competitor cabin air filters are often made with only two layers. These three layers provide outstanding efficiency in trapping more particles and dust, providing the cleanest air possible.



Magnified at 300x  
**HEPA Media**  
Three Layers



Magnified at 300x  
**Non-HEPA Media**  
Two Layers



- 1** The support layer is hard and designed to support and protect the media on the surface of the filter.
- 2** The HEPA layer is designed to trap microscopic pollutants including pollen, mold and common allergens.
- 3** The static cotton layer is included to improve the particle-holding capacity as well as prolonging the life of the filter. Unlike other cabin air filters, Bosch constructs their filters with an extra layer to combat against even the smallest particles.

## Advantages of HEPA Premium Cabin Air Filter

- ▶ **For your health** – protection against fine dusts, allergens, harmful gases and bacteria.
- ▶ **For your comfort** – noticeably more pleasant and cleaner air inside the vehicle.
- ▶ **For your safety** – less allergic reactions reduce the risk in dangerous situations.
- ▶ **For your vehicle** – less deposits on fans and air conditioning ensure optimum performance and reduce the risk of repairs.



\*Per test ASTM D2986 on part numbers: 6003C, 6026C, 6029C, 6055C, 6056C