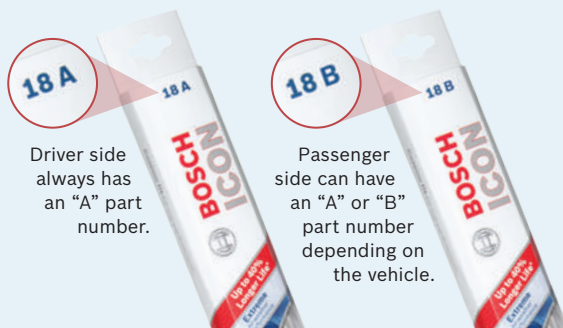


Bosch ICON™ blades use exclusive tension spring arcing technology to create a fit that is custom-contoured to the curvature of each side of the windshield. The correct blade for a particular vehicle is based on a combination of the blade length and the curvature of the windshield.

Reference the Bosch Wiper Blade catalog, or ask your auto parts professional for the exact part numbers for your vehicle.

Single blade part numbers:



Driver side always has an "A" part number.

Passenger side can have an "A" or "B" part number depending on the vehicle.

Up to 40% Longer Life*

Exclusive *fx* dual rubber resists heat and ozone deterioration to remain flexible in all weather conditions. Bosch ICON™ bracketless wiper blades feature a Quiet-Glide™ micro-finish wiping edge to deliver the cleanest wipe over a longer performance life.

*than other premium beam blades



BOSCH is a trademark licensed by Robert Bosch GmbH and/or its affiliated entities.
© 2012 Robert Bosch LLC, USA. All rights reserved.

ICON™ Wiper Blades

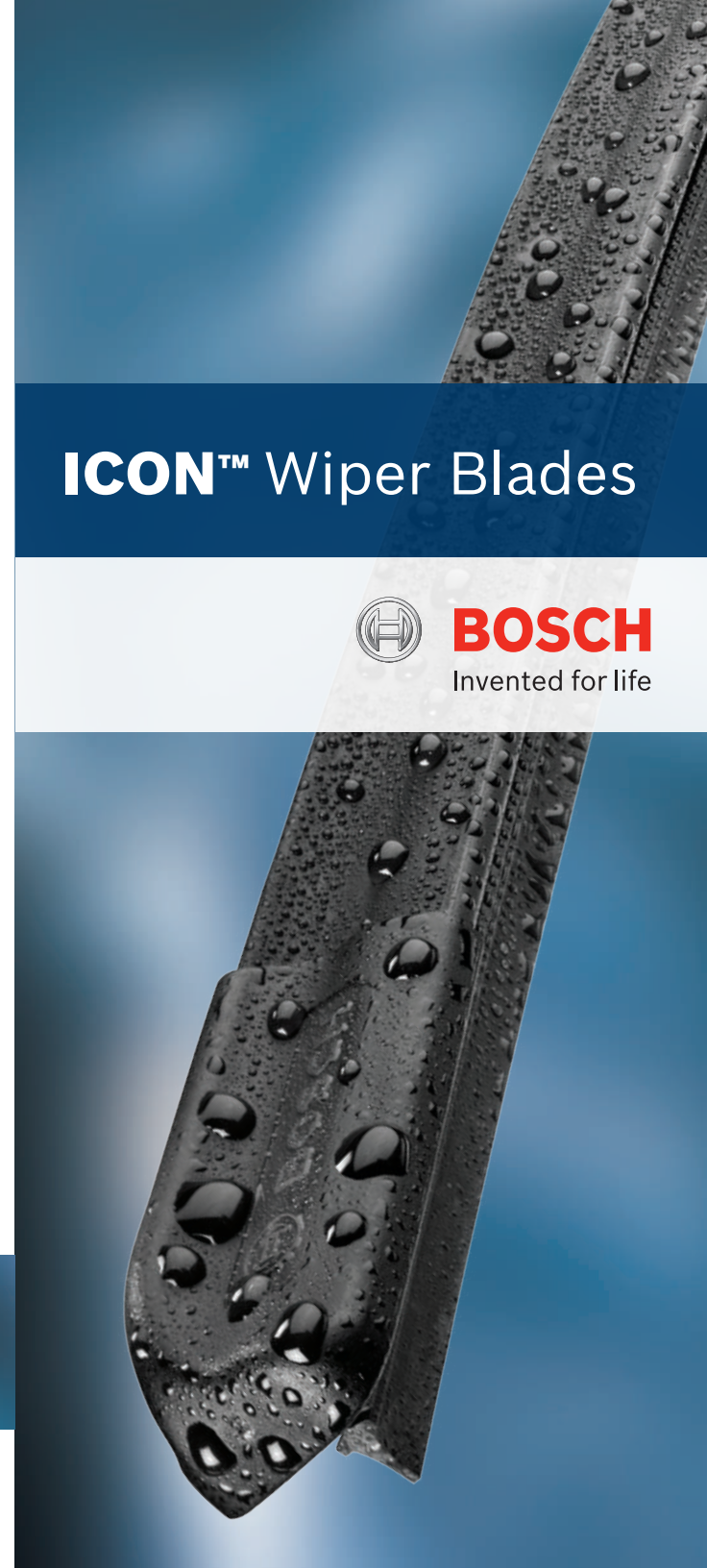


BOSCH
Invented for life

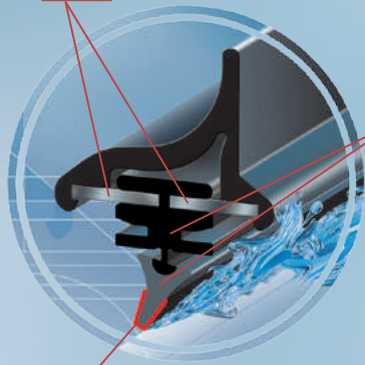
Extreme
All-Weather
Performance



BOSCH
Invented for life



Dual Precision-Tensioned Steel Springs



Exclusive fx Dual Rubber Compound

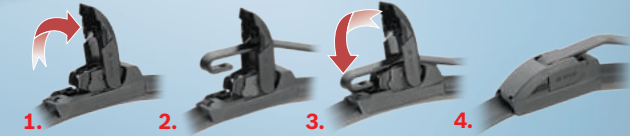
Quiet-Glide™ Micro-Finish Wiping Edge

Aerodynamic Wind Spoiler



Exclusive Weather Shield Connector System

Easy Installation



Extreme All-Weather Performance

Consumer Benefit

Superior wipe with up to **40% longer** performance life than other premium beam blades

Smooth, quiet operation

Exceptional performance at high speed

Optimum visibility in extreme weather conditions

Customized precision fit for top performance

Easy installation

Product Benefit

Specially blended rubber flex element resists heat and ozone deterioration to remain flexible in all weather conditions.

Distributes uniform downward force along the entire blade to hold it firmly to the windshield.

Exclusive tension spring arcing technology creates a fit that's custom-contoured to the curvature of each side of the windshield.

Protects arm connection from ice and snow build up.

No adapters required.

Product Feature

Exclusive fx dual rubber compound with Quiet Glide™ micro-finish wiping edge

Asymmetrical aerodynamic flexible spoiler

Dual precision-tensioned steel springs

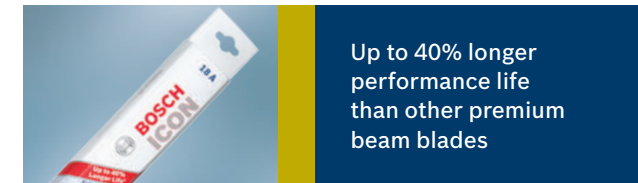
Exclusive pre-installed weather shield connector system



Latest OE
bracketless technology



Extreme all-weather
performance



Up to 40% longer
performance life
than other premium
beam blades

Check out the collection of wiper blades we offer.