

USER MANUAL

BOYO[®]
VISION

Car Rear/Side View Camera

VTE200



**Distance Grid for Rear View Camera
Can be used as Side View Camera**

Car Rear (Side) View Camera

A . Installation Guide for Side View Camera

USER MANUAL & INSTALLATION GUIDE



Rear view camera image



Side view camera image

1. Remove side view mirror and its glass, select suitable flat position on side view mirror and mark it.

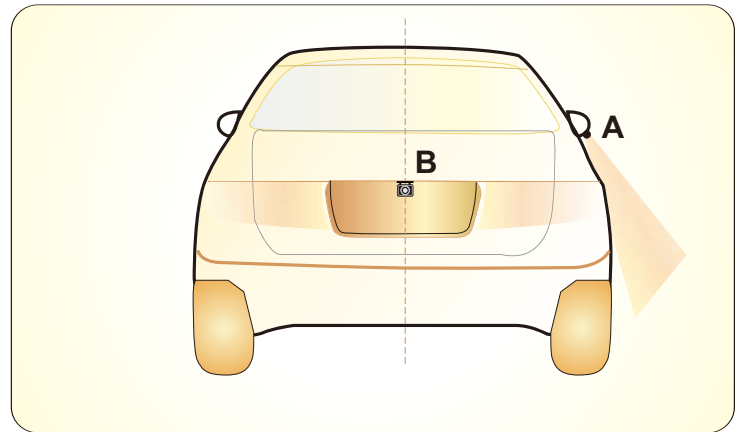
2. Drill a hole according to the camera diameter, and put the camera into the hole, press it evenly for tight and flat mounting.
Side View: The camera power wire connects to the turn signal lamp power supply

Remove car door panel, and put the harness through the car door, connecting the camera cables with Switch Box, then to car monitor

(Condition 1)

Remove car door panel, and put the harness through the car door, connecting the camera cables with Intelligent Switch Monitor.

(Condition 2)



User Manual for Rear (Side) View Camera

● Rear view:

Rear view: The power wires of a camera are connected to the power supply of a backup lamp.

No-DVD-Player or DVD-Off Condition:

When reversing, the monitor is automatically switched to display real-time backup images. After reversing, it goes off automatically.

DVD-On Condition:

When it is reversed, the monitor is automatically switched to display real-time backup image. After it is reversed, it automatically switches back to display DVD video.

● Side view

Side view: The power wires of a camera are connected to the connected to the power supply of a side signal light.

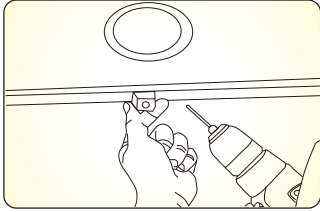
Left/Right side view camera is activated by Left/Right signal light. When the signal light is turned on, the side camera will be automatically kicked in. When the signal light is turned off, it will be automatically shut off.

Condition 2:

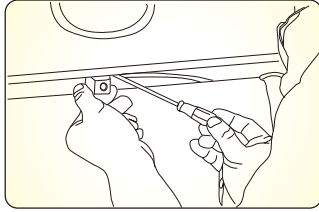
Left/Right side view camera is activated by Intelligent Switch Monitor. when the driver wants to see side view condition, he just touches car monitor switch button. car monitor will display side view camera vision automatically. no need to switching cameras frequently.

Image sensor	1/4" High Definition Color CMOS
Signal System	NTSC/PAL
Effective Pixels	648X488
Sensing Area	3.58mmx2.69mm
Sync System	Internal
Horizontal Resolution	420TVL
Min Illumination	0.2Lux
Diagonal Angle	120°/170°
Video Output	RCA,1.0Vp-p,75ohm
SNR	Better than 48db
Waterproof Grade	IP67
Current Consumption	max450MA
Nominal Voltage	DC12V
Working Environment	-22° F~ 149° F, RH95%MAX
Night Vision	Optional
Image Swtich	Optional
Guard Line	Optional
Other	Auto White Blance, AGC, Backlight Compensation

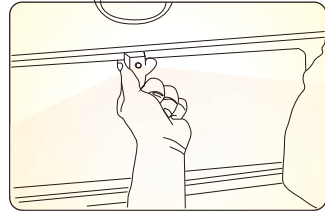
B. Installation Guide for Rear View Camera



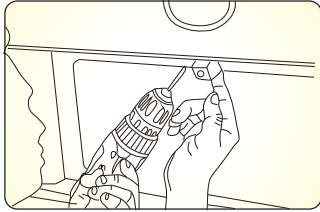
1. Choose a flat position near license plate light and make a small hole for the first screw with a drill.



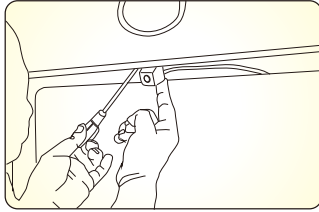
2. Use a screw driver to fix the first screw (but not tightly).



3. Get the power/video cables connected, and then adjust the camera properly to find the best position for the other screw according to the camera image in monitor.



4. Mark the position found for second screw and make a hole with a drill.



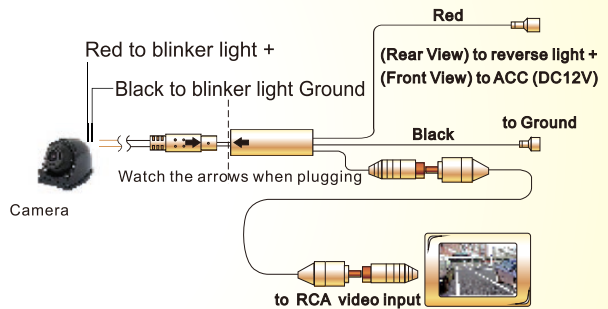
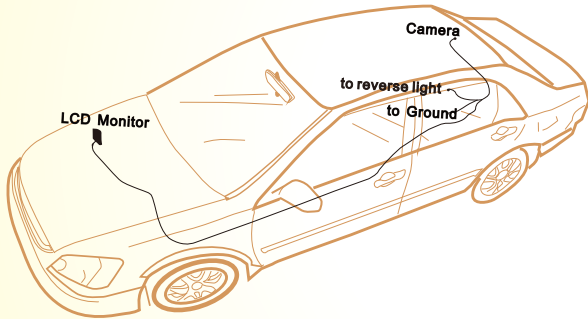
5. Fix the second screw with a screw driver.

Remarks:

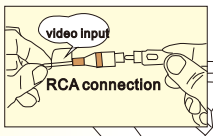
Beside flush and bracket mount cameras, we also have bolt mount camera series, which is mounted by following steps:

1. Select suitable flat position near the license plate light and mark it.
2. Drill a hole according to the bolt diameter.
3. Put the bolt vertically (against ground) into the hole and fix the bolt with the screw supplied from inside.
4. Some models come with up/down image switch option, and can be mounted with its bolt horizontal (against ground) and its lens downward.

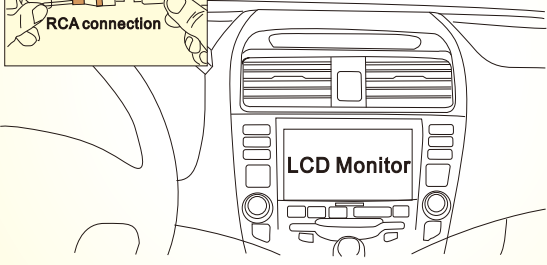
Wiring Diagram



Connection to LCD Monitor



Please connect the camera output jack to the video input interface of the LCD monitor.



Special function

Mirror/ right image switch:

The camera comes with mirror image standard for rear view / or rear side view. It comes with mirror / right image switch option. This option can be available by cutting off the thin blue wire near cable harness from camera body. Need restart power of the camera to see the image reversed. The cutting ends must be insulation-taped before using the camera.

Parking Guide Line Indicate ON/OFF:

The camera comes with OFF parking guide line indicate. It comes with Parking Guide Line Indicate ON/OFF option. This option can be available by cutting off the thin brown wire near cable harness from camera body. Need restart power of the camera to see the Guide Line On. The cutting ends must be insulation-taped before using the camera.

IMPORTANT NOTES

- 1.The rear (Side) view camera functions technically as a driver assistance device, which can not be taken as a substitute for the driver's responsibility when operating the vehicle.
- 2.To keep the camera working properly, please clean the camera regularly to free it from dirt, waterdrops, snowdrops, and etc.
- 3.Although the camera is designed to be waterproof, please do NOT use high-pressure water jet to wash the camera s this may break the glass lens.
- 4.Keep the cables of the camera away from high temperature objects such as engine or exhaust.
- 5.If the camera model you have comes without in-built LED lights, please turn on your license plate light for better vision at night or in dark areas.
- 6.The cameras are applicable to vehicles with DC 12V power output (10% higher or lower allowed), please do NOT use it on vehicles with DC 24V or other power output out of this range, otherwise it is very likely to get burned. (Except some commercial vehicle cameras that can support DC 12V-24V)
- 7.The specifications of the camera are subject to change without prior notice.

Enviromental Reference

- *Old electronic devices don't belong into the bin.*
- *If you want to dispose this equipment later, remove all cables and send it back to supplier or bring it to a collection point for old electronic devices.*
- *You can dispose this device together with your old car, too. You don't have to remove it in this case.*
- *The packing can be recycled. Dispose the packing in a collecting system planned for it.*

