

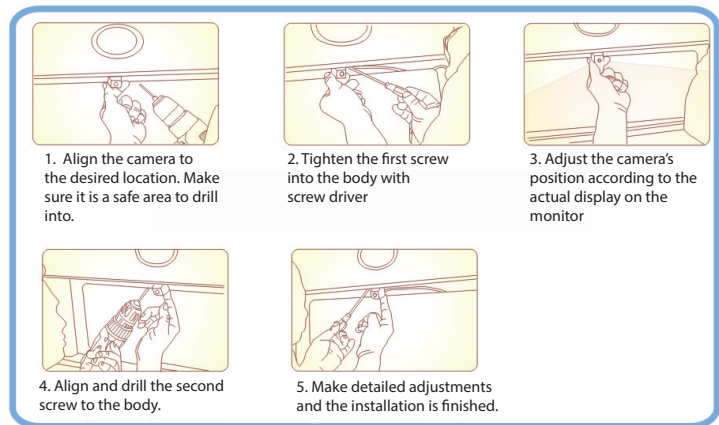
1. BILL OF MATERIALS

- Micro camera x1
- 20ft RCA video extension cable (Male to Male) x1
- 4ft power and video harness x1
- 13mm hole saw x1
- Flush mount camera bezel x1
- Snap ring for flush mounting x1
- O-ring for flush mounting x1
- Heavy duty double sided tape for bracket mount x1
- Bracket screws x3

2. SPECIFICATIONS

- 13mm Micro Camera
- CMOS Image Sensor
- 500 VTL Horizontal Resolution
- 640 x 480 Effective Resolution
- 150° Diagonal View Angle
- IP68 Waterproof Rating
- Selectable Reverse/Non-Reverse Image
- Selectable On/Off Parking Guide Lines
- Dual Mounting - Bracket/Flush Mount

3. INSTALLATION TIPS



4. WIRING

