

Proudly Made
in the USA
Since 1917



Branick® Spreaders

Passenger & Light Truck



5045



Air Powered
5120



Features

- Entry Level to Air Powered Options
- Fit Bead Diameters up to 20" (5025 & 5045) and 22.5" (5120)
- Easily and Quickly Adjustable
- All Steel Construction for Long Life
- Compact Footprint Minimizes Space Required
- Manual and Air Powered Models

QUALITY AND PERFORMANCE THAT'S AFFORDABLE!

Branick has been making spreaders for almost 80 years. We have channeled all that experience into our line of small spreaders. You're sure to find the right fit for your shop with features like sawtooth or spring set adjustment, zinc plated rollers, air powered or gas spring assisted spread arms, and an RMA compliant gooseneck LED light. From the entry model 5025 to the heavier 5120, all are designed to handle any passenger and light truck tire up to 20". The 5120 can even take 22.5" tires. All include a solid 4 point base that can be bolted to the floor for added stability. If you're thinking of adding a spreader, think Branick. Manufactured at Branick's facility in Fargo, ND means you get American made quality and toughness.

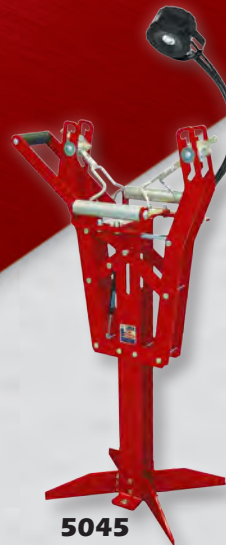
Branick®

Spreaders

Passenger & Light Truck



5120



5045



5025

Specifications

	5025	5045	5120
Maximum Bead Diameter	20"	20"	22.5"
Maximum Tire X-Section	12" / 305 mm	13.5" / 343 mm	14" / 356 mm
Spread Arm Type	Manual	Gas Spring Assist	Air Powered
Spread Arm Operation	Hand	Hand	Foot
Working Height	35"	36.25"	36"
Light	No	LED	LED
Roller	No	Yes	Yes
Hook Adjustment	Sawtooth	Sawtooth	Spring Locking Pin
Tool Tray	No	No	Yes
Shipping Weight	30	80	150
Dimensions	10 W x 10 D x 36 L	22 W X 15 D X 45 L	29 W X 27 D X 40 L

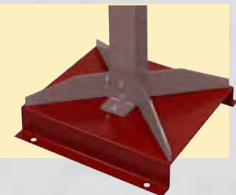
Optional Storage Cabinet (available for 5045)

Keep your repair and inspection tools where you need them, at the spreader. Our optional storage cabinet attaches directly to either side of the spreader so you won't waste time searching for supplies. Steel construction to take the punishment of a shop environment.



Optional Riser Platform (available for 5045)

If you need a little extra height for an ergonomic position, the optional riser platform will do the trick. The platform's 3" lift brings the working surface to 39.25". Bolts directly to the base of the spreader and includes pre-drilled holes for floor mounting.



Optional Model 502 Base (available for 5025)

The Model 502 base gives the 5025 the stability to work without bolting to the floor, allowing the spreader to be moved wherever it's needed. Easy four bolt installation.

