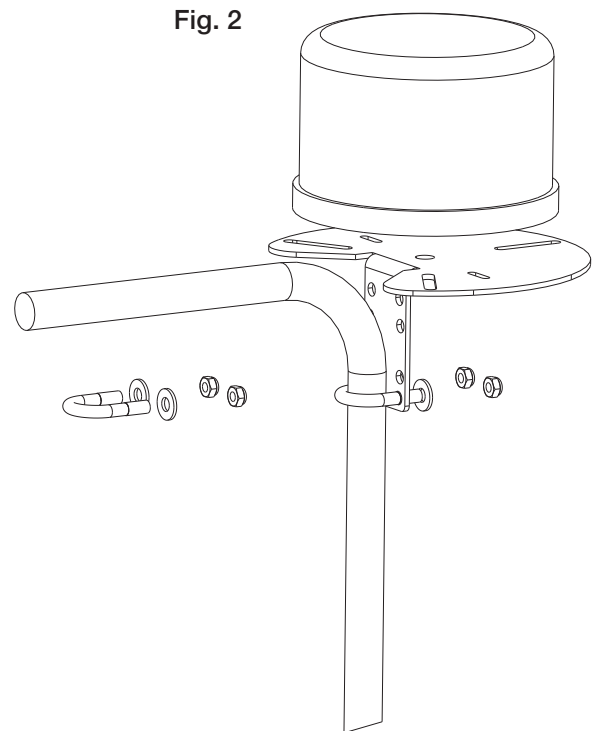
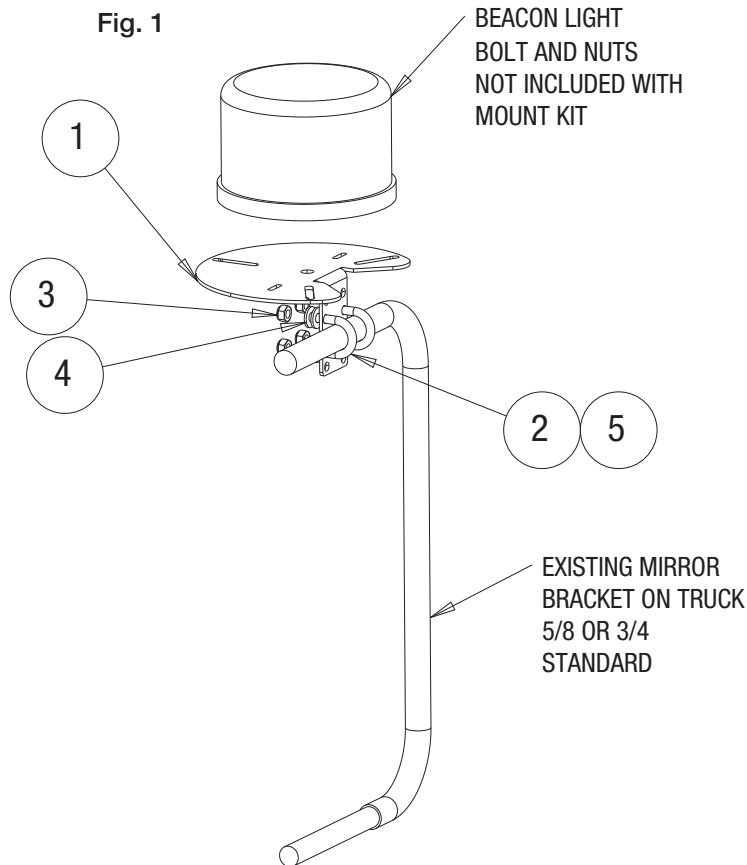


Installation Instructions

8891001 Beacon Mirror Mount

1. Place the Circular Plate onto the mirror bracket.
 2. Insert two u-bolts through the exiting holes on the circular plate.
 3. Secure it with the proper washers and nuts provided.
 4. Extra washers is needed on the smaller 5/8" diameter mirror.
- Optional** - It is optional to mount the Circular Plate vertical to the mirror bracket as shown in fig 2.



Bill of Materials

ITEM	PART NO.	QTY.	DESCRIPTION
1	3027903	1	CIR PLATE, BEACON MOUNT
2	3027912	2	U-BOLT, MIRROR MOUNT
3	FNE025020031SS	4	NUT, NYLON INSERT 1/4-20 SST
4	FWF025063007SS	8	WASHER, FLAT 1/4 SAE SS
5	3030438	2	U-BOLT, MIRROR MOUNT, 1.25 DIA.

WARRANTY

Buyers Products Co. warrants all truck/trailer hardware manufactured or distributed by it, to be free from defects in material and workmanship for a period of one year from date of shipment. Parts must be properly installed and used under normal conditions. Any product which has been altered, including modification, misuse, accident or lack of maintenance will not be considered under warranty. Normal wear is excluded. The sole responsibility of Buyers Products Co. under this warranty is limited to repairing or replacing any part or parts which are returned, prepaid, and are found to be defective by Buyers Products Co. Authorization from Buyers Products Co. must be obtained before returning any part. No charges for transportation or labor performed on Buyers' products will be allowed under this warranty.