

ProTech

Supporting Today's Professional Technician



CARDONE

Inspect Distributor Cam Gear Before Installing Distributor

Application: All gear driven distributors

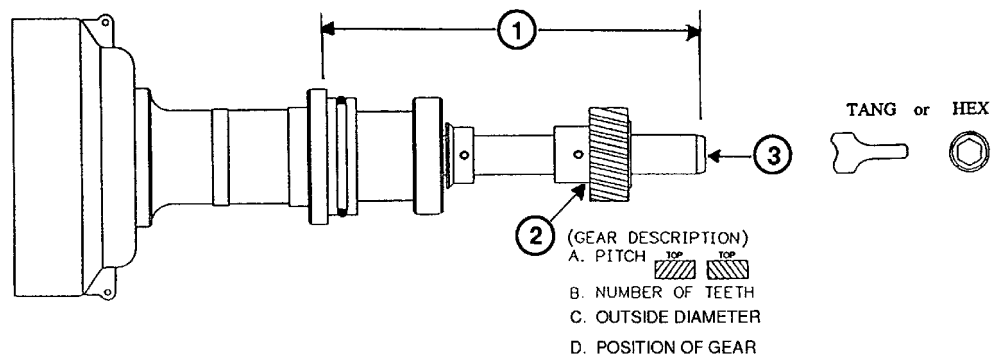
Problem: Original distributor has abnormal gear wear or breakage.

Cause: Distributor gear and camshaft drive gear wear together in a pattern. When only one of the pair is replaced, the likelihood of a repeat failure is very high.

Solution: Inspect both camshaft drive gear and distributor gear for wear. If either is worn, both must be replaced.

Inspect oil pump. If pump does not turn freely, it must be replaced.

Important Note: When replacing the distributor, it is extremely important to match the replacement unit to the original. Key points of comparison are shown below.



ProTech

Supporting Today's Professional Technician



A Little Lube Prevents Distributor Gear Failure

Application:

Ford gear-type distributors.

Problem:

Replacement units installed in new or remanufactured engines experience distributor or cam gear failure.

Cause:

Failure to pre-lube distributor gear, prime oil pump, possible mismatch of gear and camshaft material, or inadequate oil pressure.

Solution:

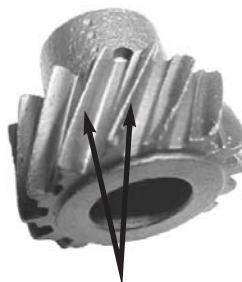
Before installing distributor, lube distributor gear with grease and prime oil pump. Prime pump by using a drill with an intermediate shaft from an oil pump attached. Operate drill in a clock-wise direction until oil pressure develops. Or disable engine so it won't start then crank in short intervals until oil pressure develops.

Installation Tips:

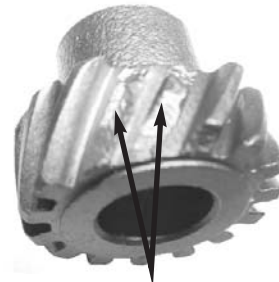
- Do not tap starter or crank engine to position gear teeth.
- After installation check for up and down play of distributor shaft (must be between .015 and .030).
- Check camshaft endplay for proper specification.
- If cam is changed it is very important that cam and gear material match. Steel distributor gears must only be used with roller camshafts, cast iron distributor gears only with cast iron camshafts.



GOOD GEAR



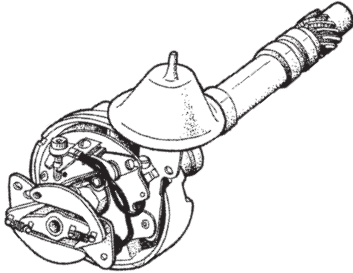
WORN TEETH



BROKEN TEETH

Remanufactured Best by **CARDONE**

Distributors



- ABS Modules
- Body Control Computers
- Engine Control Computers
- Ignition Distributors
- Power Supply Modules
- Suspension Control Modules
- Vane Airflow Meters
- Air Supply Modules
- Cruise Control Modules
- GM PROM Chips
- Mass Airflow Sensors
- Relay Control Modules
- Transmission Control Modules

- Domestic and import coverage for passenger cars, light and medium duty trucks
- The industry's most advanced engineering and remanufacturing technology
- 100% disassembly with component specific cleaning processes
- 100% computerized tested to ensure quality and reliability
- 100% new diaphragm assemblies, o-rings, seals, points and condensers
- 100% appearance inspected to ensure customer satisfaction
- Backed by a 12 month/18,000 mile warranty
- The industry's best full-line Distributor remanufacturer
 - An aggressive new product introduction program keeps you on the leading edge with the parts you need.
- Outstanding availability
 - The best and most consistent in the industry!
- ASE certified technical support
 - CARDONE Distributors stay sold!
- Priority Plus emergency overnight shipping
 - This service helps you increase your customers' satisfaction.
- Easy-to-use catalogs, product instruction guides and tech service bulletins