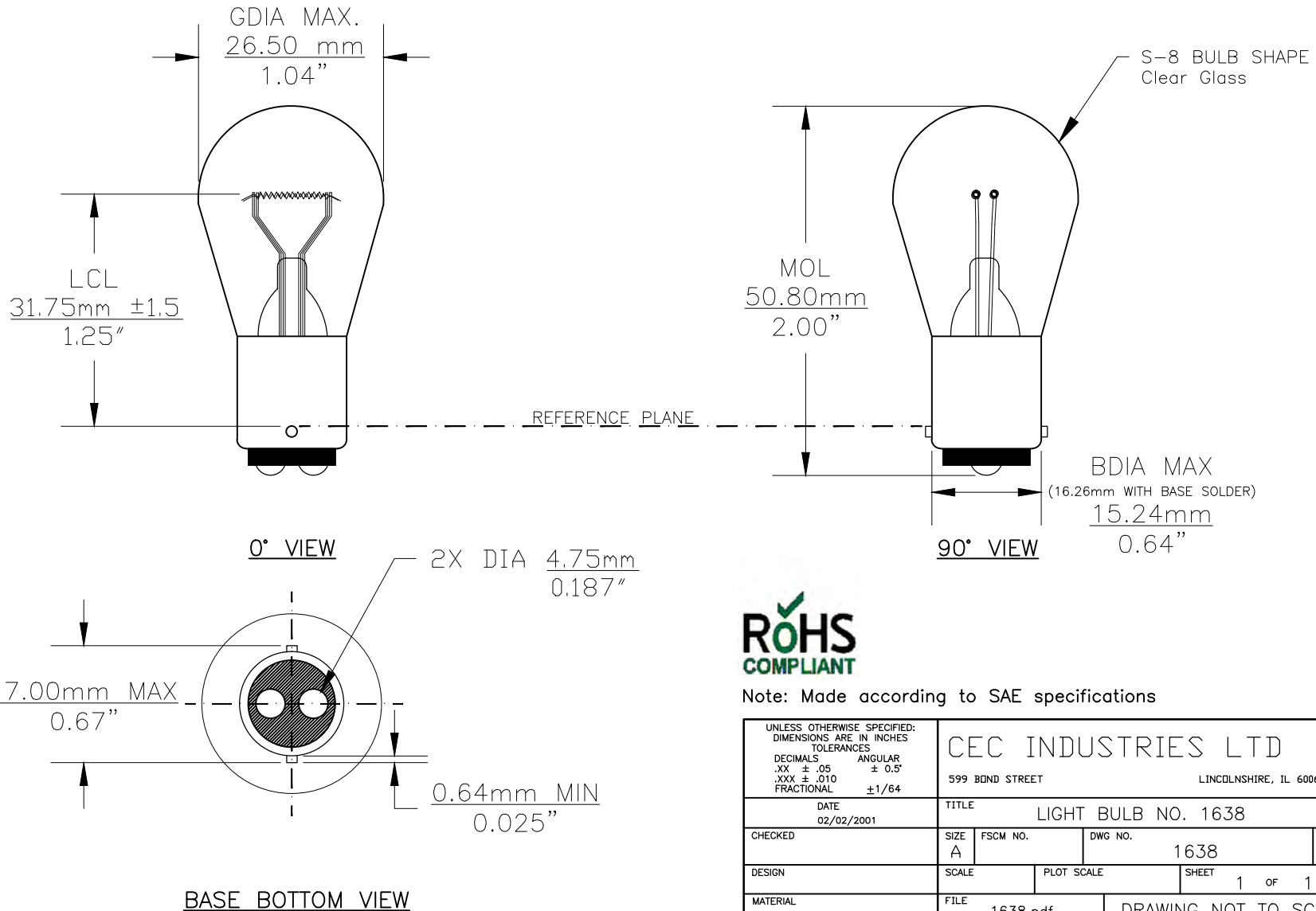




PART NO.	BASE TYPE	DESIGN VOLTS	DESIGN AMPS	MSCD	FILAMENT TYPE	AVERAGE LIFE HOURS	REVISIONS			
							REV #	DESCRIPTION	DATE	APPROVED
1638	D.C. BAYONET (BA15d)	28.0V	1.02±10%	32±15%	2C-6	500	1	ISSUED	02/02/2001	E.S.
							2	ADDITIONAL VIEW AND NOTES	11/02/2010	D.C.
							3	REDRAWN FOR ADDITIONAL VIEW	10/27/2014	R.M.



Note: Made according to SAE specifications

UNLESS OTHERWISE SPECIFIED: DIMENSIONS ARE IN INCHES TOLERANCES		CEC INDUSTRIES LTD			
DECIMALS	ANGULAR	599 BOND STREET		LINCOLNSHIRE, IL 60069	
.XX ± .05	± 0.5°	TITLE LIGHT BULB NO. 1638			
.XXX ± .010		DATE	02/02/2001	SIZE	A
FRACTIONAL	±1/64	CHECKED		FSCM NO.	
		DESIGN		DWG NO.	1638
		MATERIAL		SCALE	
				PLOT SCALE	
				SHEET	1 OF 1
				FILE	1638.pdf
				DRAWING NOT TO SCALE	

Cec Industries provides the best in car bulbs equipment.