

**CRUNCH<sup>®</sup>**



**"The Power  
of Music"**

**2013 PRODUCT LINE**

# V-DRIVE

AMPLIFIERS



**SUPER**  
TECHNOLOGY



WIRE WITH  
**MAXXLINK**  
TO EXTEND  
YOUR WARRANTY

The only thing that can improve on the sound and the power of the CRUNCH amplifier is a ridiculously long warranty. When you install your amplifier with a MAXXLINK amplifier wiring kit, you extend your CRUNCH warranty. So, there it is. CRUNCH CAR AUDIO installed in your system with MAXXLINK to FEEL THE POWER OF MUSIC!

**It's murdered! It's loud! And it delivers The Power of Music!**

Digging into today's digital music file formats and pulling all the hidden information is the draw of Crunch. The new V-Drive components are designed and built for those who love music. Get the music out of the system and into your ears with unequaled clarity and "shut your friends up" power.

### **V-Drive Amplifier Technology Super V Technology, A/B and D Class Designs**

#### **V-Drive Performance**

The Crunch engineers packed the newest Super V-Drive performance technologies inside the massive V-Drive heat sink. New military grade PCBs and large 3 oz. copper traces were added to handle higher current loads. Putting more current through the amplifier and dissipating the heat means more power and a longer life for the Crunch V-Drive amplifiers.

V-Drive amplifiers are available in Class A/B designs for the high end sound quality you need and high power Class D for the sub bass power your system will demand for subwoofers.

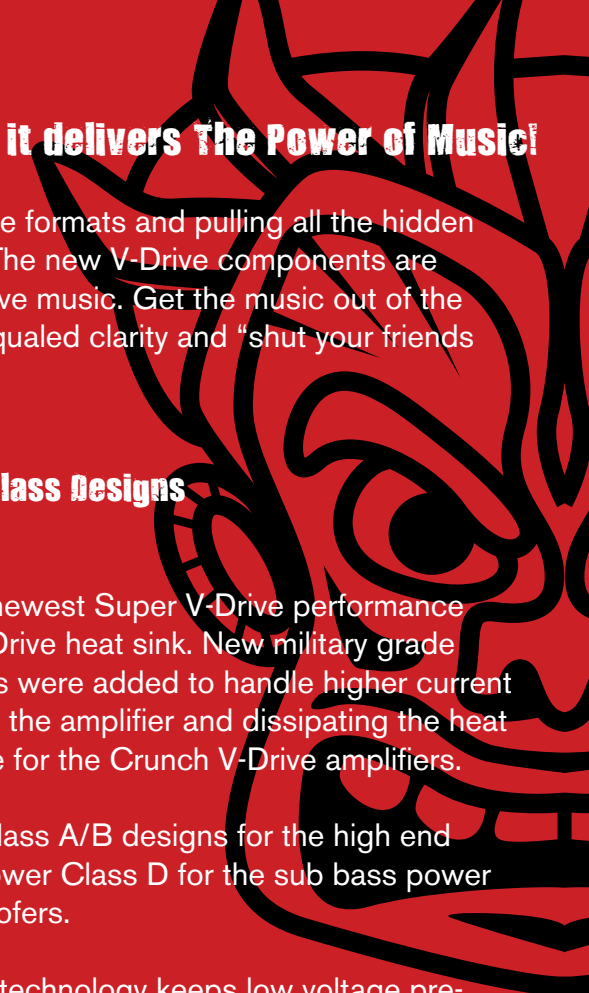
The SP ISO (Signal Path Isolation) technology keeps low voltage pre-amp audio signals like input attenuation and crossover features separated from higher voltage V-Drive 3P Power supply and SPEED-FET MOSFET devices. These technologies work together to create the heart of the V-Drive technology that delivers great music with huge power.

#### **V- Drive Subwoofers**

Your system needs to channel that V-Drive amplifier power! Speakers can only do so much without the full spectrum of low bass. Regardless of the style of music that drives your late night drive-thru visits; deep bass will make your music sound huge. V-Drive subwoofers are built for power and deep sound utilizing Injection Molded Polypropylene cones and 2.0" high temp voice coils. The V-Drive subwoofers have a dual 4-Ohm multilayer voice coil to maximize available power from any amplifier. The Injection molded PP cones are secured to the URS Steel Basket with a UV resistant foam surround assuring that weather and other environmental issues can not affect your big sound.

#### **V-Drive Speaker Technology**

Give a voice to your music! Fight the piped, streamed music life with every ounce of your being. The Crunch V-Speakers are made to do just that. Impact resistant tweeters made from musical yet powerful Neo-Mylar soft domes and cones that are made with Silver Alpha-Cellulose cones. These speakers will breathe life into your music that will scream, The Power of Music! All the installation hardware is included so your install will be quicker than changing the digital channel on that stream they play at work.

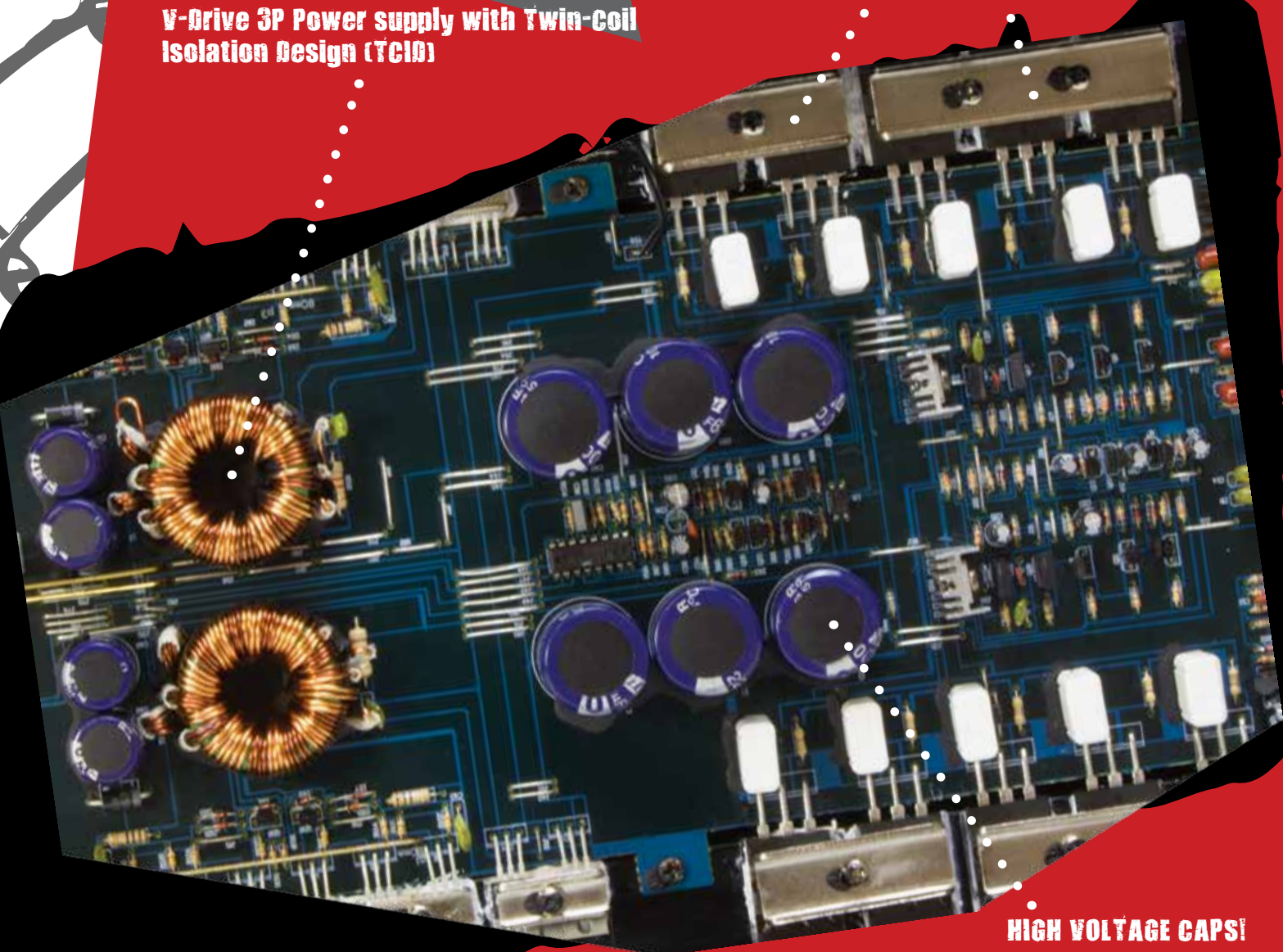




# V-DRIVE AMPLIFIERS

V-Drive 3P Power supply with Twin-Coil Isolation Design (TCID)

SPEED-FETS, High-Speed MOSFET Output devices



HIGH VOLTAGE CAPS!

## Features

- V-Drive technology powers these amplifiers with beefed up circuitry plus clean and powerful music power.
- SEPP (Single Ended Push Pull) A/B Class 2 and 4 channel amplifiers for the sound quality required for great musical power.
- Mono Block amplifiers deliver powerful sound quality with high power and efficient D-Class power
- V-Drive 3P Power supply with Twin-Coil Isolation Design (TCID) power supplies for maximum efficiency in converting 12volt power into huge watts through the amplifiers
- Exponential Variable-Power Supply (EXVP) for efficient DC to AC conversion.
- High-Current Power Supplies
- SPEED-FETS, High-Speed MOSFET Output devices

## Crossover Section:

- Fully Adjustable Crossovers
- 24 dB Low-Pass
- 24 dB Subsonic Filter
- Bass Thrust with Variable Bass Equalization
- Crunch Logo with Murdered "V" Drive Illumination
- Selector Switch Allows Choice of Fixed Illumination or Scrolling Illuminating "V"

## Installation & Configuration:

- Input Sensitivity from .2 to 5V For Multi-Channel and .2 to 6V for the Mono models
- 4/2 Ohm Stable Multi-Channel Models
- 4/2/1 Stable Mono Models
- Multi-Channel Configurable 4/3/2/1
- RCA Line Outputs enables Amplifier Daisy-Chaining
- 4, 8 to 0 Gauge Power Connectors
- Multi-Channel Amplifiers are 2-Ohm Stereo and 4-Ohm Bridged Stable
- High and Low Level Inputs (Except mono amplifiers)
- Subsonic Filter, Bass EQ and Bass Remote Included with all mono amplifiers

SPEED-FETS



## MBC-1 Bass Creator

The Maxxsonics MBC1 contains a Bass Driver circuit that accurately recreates and injects Low Frequency information back into the signal path. What that means in your ears is that the MBC1 will give more bass impact to your best compact discs or lowest quality recordings. This is especially important on older recordings.

- Dash Mount Remote Control: The MBC1 comes with a Dash Mountable Remote Control
- Bass Maximizer Indicator: Shows you the status of when the unit is injecting deep bass signal
- Bass Output Control: Allows the MBC1 to maximize the bass output of any auto sound audio system while restraining destructive bursts.



Model	DRA3250.1D
1-Ohm	1 x 3200
2-Ohms	1 x 1600
4-Ohms	1 x 800
Mono Bridged @ 4-Ohms	n/a
W-9.53" H-2.13" Length-	14.57"

Model	DRA850.2	DRA1150.2	DRA4050.2	DRA1050.4	DRA1450.4	DRA2450.4	DRA4050.4	DRA1850.1D	DRA2550.1D
1-Ohm	n/a	n/a	n/a	n/a	n/a	n/a	n/a	1 x 1800	1 x 2500
2-Ohms	2 x 400	2 x 550	2 x 2000	4 x 250	4 x 350	4 x 600	4 x 1000	1 x 900	1 x 1250
4-Ohms	2 x 200	2 x 275	2 x 1000	4 x 125	4 x 175	4 x 300	4 x 500	1 x 450	1 x 625
Mono Bridged @ 4-Ohms	1 x 800	1 x 1100	1 x 4000	2 x 500	2 x 700	2 x 1200	2 x 2000	n/a	n/a
W-9.53" H-2.13" Length-	11.02"	12.99"	16.93"	11.02"	12.2"	13.78"	17.72"	12.2"	13.78"



# V-DRIVE

## SUBWOOFERS SPEAKERS



Model	DRV12D4	
Size	12"	
Power handling	RMS	350
	MAXX	700
Impedance	Dual 4-Ohm	
Cut-Out Ø	10.91"	
Chassis depth from flange	5.06"	

- Dual 4-Ohm Voice Coil allows the ability to configure the subwoofer system for 2 or 8-Ohm operation to maximize power from any amplifier.
- Injection Molded Polypropylene cone and UV protected Foam Surround to deliver big power with strength and immeasurable distortions.
- URSteel (Ultra Rigid Stamped Steel) Basket for strength in any application or installation
- Multi-Layer High-Temp voice coil for maximum power handling and heat dissipation
- 2" Voice coil on vented former offers the biggest power in the Crunch line and quickest heat dissipation with additional venting for voice coil/magnet heat
- 360° Front-Plate & Voice-Coil Cooling assuring that cool air is entering and heated air is exiting the voice coil gap with optimum efficiency
- Nickel plated push on terminal to assure audio signal transfer from the amplifier to subwoofer. MAXXLINK speaker wire will offer the best voltage transfer.
- High Energy Magnet which is the big motor for big MAXX power for the V-Drive woofers
- Vented ABS Motor Cap to protect the motor from all the junk you have to keep in the trunk

The new V-Drive speakers from Crunch are designed to handle any vocalist, guitar riff or heavy turntable scratch that can be powered through them. The Neo Mylar Soft Dome Tweeter delivers smooth yet powerful music balanced through a passive crossover and smooth mids and mid bass through an *Silver Alpha-Cellulose Cone*. Every feature in the new V-Drive speakers is designed to satisfy The Power of Music.



Model	DRS35CX	DRS4CX	DRS46CX	DRS525CX	DRS5768CX	DRS65LP	DRS693T	DRS6C
Size / Type	3.5" Coax	4" Coax	4 x 6" Coax	5.25" Coax	5 x 7"/6 x 8" Coax	6.5" Low Profile	6 x 9" 3-Way	6.5" Comp
Peak Power	125W MAXX	150W MAXX	200W MAXX	200W MAXX	200W MAXX	250W MAXX	350W MAXX	300W MAXX
Impedance	4-Ohm	4-Ohm	4-Ohm	4-Ohm	4-Ohm	4-Ohm	4-Ohm	4-Ohm
Sensitivity	87dB	87dB	87dB	88dB	88dB	88dB	88dB	89dB
Frequency Response	59Hz - 20KHz	58Hz - 20KHz	57Hz - 20KHz	59Hz - 20KHz	59Hz - 20KHz	55Hz - 20KHz	49Hz - 20KHz	51Hz - 20KHz
Cut Out	3.14"	4.01"	3.9 x 5.6"	4.48"	4.95 x 7.06"	5.59"	5.98 x 8.64"	5.67"
Mounting Depth	1.56"	1.96"	1.98"	2"	2.07"	1.8"	3.1"	2.1"

- Impact Resistant Neo Mylar Soft Dome Tweeter Elements for great sound quality and added reliability
- Silver Alpha-Cellulose Cones for musical power with added resistance to the elements
- Moisture Resistant Rubber Surround with high Mid-Bass Impact
- Anti-Resonant Stamped Steel Basket so you only hear the music - not the speaker
- Spade Speaker Terminals for quick installation
- Wide Nominal Power Range
- Installation Hardware Included



# POWERZONE AMPLIFIERS



Music is changing, did you notice? It is way more than guitars and drums now. Today's music demands that a car audio system can produce everything from classic music to tracks burned by a weekend DJ and mastered on a laptop. Crunch brings out every detail. Sorry DJ's, even the bad mixes will be clear as a bell in your head. So, perhaps a bit more practice before unleashing the demon that is Crunch car audio.

In recognition of 30 years of tradition, the new POWERZONE features everything you'd expect from Crunch with high power, lots of features and significant value.

The POWERZONE series features Versa Cross™ fully adjustable electronic crossovers for fast and easy audio system setups compatible with almost any speaker system. To prevent obsolescence, all multi-channel PZ-series amplifiers are bridgeable and low-impedance stable enabling growth in a car audio system to a much higher performance level.

Model	PZ800.2	PZ1200.2	PZ1800.2	PZ2400.2	PZ900.4	PZ1200.4	PZ1800.4	PZ3000.4	PZ1500.1	PZ2500.1
1-Ohm	N/A	N/A	N/A	N/A	N/A	N/A	N/A	N/A	1 x 1500	1 x 2500
2-Ohms	2 x 400	2 x 600	2 x 900	2 x 1200	4 x 225	4 x 300	4 x 450	4 x 750	1 x 800	1 x 1250
4-Ohms	2 x 200	2 x 300	2 x 450	2 x 600	4 x 115	4 x 150	4 x 225	4 x 375	1 x 400	1 x 625
Mono Bridged @ 4-Ohms	1 x 800	1 x 1200	1 x 1800	1 x 2400	2 x 450	2 x 600	2 x 900	2 x 1500	N/A	N/A
W-9.53" H-2.13" Length-	7.88"	9.85"	12.6"	12.6"	11.02"	12.6"	14.17"	15.75"	15.75"	17.72"

## Features

- SEPP (Single Ended Push Pull) A/B Class Amplifier Designs
- All 2-Channel and 4-Channel Feature Bridgeable Designs
- Carbon Fiber effect body
- Chrome CRUNCH Logo
- Rugged MOSFET Pulse Width Modulation Power Supply for Instant Maxx Power Output
- 1-Ohm Capable A/B Class Mono Block Amps
- 2-Ohm Capable A/B Class 2/4-Channel Amps
- 4-Channel Amps Configure to 3-Channel Right and Left and Sub or 2-Channel Mono Bridged Mode
- Amp Protection with System Diagnostics LED's to Protect Against:
  - Current / Amperage Overload
  - Short Circuits
  - Thermal Overload
  - DC Offset
- Hi-Level Speaker Lead Inputs on 2/4-Channel Amps
- Silver Preamp Level RCA Inputs
- Daisy-Chain Line Outputs
- Mono Blocks Include a Remote Bass Control
- Oversized Speaker Terminals
- SPEED-FETS, High-Speed MOSFET Output devices

**SPEED-FETS**

## Versa Cross Electronic Crossover

- High-Pass Versa Cross X-Over Adjustment 60Hz to 1.2kHz (2/4 channel) except on Mono amplifiers
- Low-Pass Versa Cross X-Over Adjustment 30Hz to 250Hz
- Stereo / Mono Amplifier Mode Switch (2/4 channel)
- Speaker Lead High-Level Inputs for Receiver such as OEM Radios Lacking Preamp Outputs
- Configuration Switch for Changing Channel Operation When Using Bridging Function



**WIRE WITH  
MAXXLINK  
TO EXTEND  
YOUR WARRANTY**

Remember, all CRUNCH amplifiers are eligible for the ridiculously long MAXXLINK warranty. When you install your amplifier with a MAXXLINK amplifier wiring kit, you extend your CRUNCH warranty. Additionally, MAXXLINK speaker wire will maximize performance with all Crunch subwoofers and speakers.

# POWERZONE

## SUBWOOFERS



With all these changes in music, the subwoofers have to perform flawlessly, regardless of musical style, no matter what the source material. The POWERZONE woofer is the perfect match for a POWERZONE amplifier or a POWERZONE amplifier. You can see that POWERZONE is built to handle power, right on the cone, treated with a (CFT) carbon fiber look to add strength, with the 1.5" voice coil and the R2S spider will keep the voice coil cool and suspension musical.

Model		PZ12D4
Size		12"
Power handling	RMS	300
	MAXX	600
Impedance		Dual 4-Ohm
Cut-Out Ø		10.91"
Chassis depth from flange		5.06"



### Features

- Injection Molded Custom Dust cap with Carbon Fiber treatment
- Injection Molded Polypropylene Cone mounted with dustcap and UV Resistant Foam Surround
- R2S (Resin Reinforced Spider)
- 1.5" Voice Coil
- PVC Gasket
- Stamped Steel Basket
- Push on terminals



Remember, all CRUNCH amplifiers are eligible for the ridiculously long MAXXLINK warranty. When you install your amplifier with a MAXXLINK amplifier wiring kit, you extend your CRUNCH warranty. Additionally, MAXXLINK speaker wire will maximize performance with all Crunch subwoofers and speakers.



# POWERONE AMPLIFIERS



## Features

- Complete Lineup of Class A/B Multi-Channel Amplifiers, Class A/B Mono Amplifiers and one Class D Model
- Three 2-Channel models, three 4-Channel models, three mono models and One 5-Channel model
- Illuminated POWERONE Badge
- Aluminum Heatsink for Excellent Heat Dissipation
- Military Grade PCB
- PWM MOSFET Power Supply
- Diagnostic Indicators
- DC, Short Circuit, Thermal and Overload Protection
- RCA Inputs & Outputs

## Mono Amps:

- High Efficiency A/B-Class Technology
- D-Class Technology P1-3050.1
- 4/2/1 Ohm Stable (P1-1050.1 is 4/2 Ohm Stable)
- Bass (Level) Remote
- 45Hz Bass EQ
- Variable Low Pass and Subsonic Filters

## Multi-Channel Amps:

- A/B Analog Class
- High Level Inputs on 2-Channel Models Only
- 4/2 Ohm Stable
- 45Hz Bass EQ
- Variable Low Pass and High Pass Filters
- Selectable FULL/LPF/HPF X-OVER
- Selectable Switch for Internal RCA Signal Routing

THE POWER of MUSIC is delivered across all Crunch amplifiers. The POWERONE amplifiers assure that any system, regardless of complexity. The POWERONE amplifiers feature many of the same leaps in technology with a mind for keeping a grip on cash.

<b>P1-5050.5</b>
n/a
4 x 250 + 1 x 500
4 x 125 + 1 x 300
N/A
2 x 500
21.89"

Model	P1-650.2	P1-1050.2	P1-1650.2	P1-650.4	P1-1050.4	P1-1650.4	P1-1050.1	P1-2050.1	P1-3050.1
1-Ohm	n/a	n/a	n/a	n/a	n/a	n/a	n/a	1 x 2000	1 x 3000
2-Ohms	2 x 300	2 x 500	2 x 800	4 x 150	4 x 250	4 x 400	1 x 1000	1 x 1000	1 x 1500
4-Ohms	2 x 150	2 x 250	2 x 400	4 x 75	4 x 125	4 x 200	1 x 500	1 x 500	1 x 750
Mono Bridged @ 4-Ohms	1 x 600	1 x 1000	1 x 1600	2 x 300	2 x 500	2 x 800	N/A	N/A	N/A
W-9.53" H-2.13" Length-	10.08"	12.05"	12.6"	11.26"	12.44"	12.6"	15.98"	17.98"	19.92"





# SCREAMERS

## PRO SPEAKERS

### SCREAMERS

Very loud! Very reliable! Very versatile! The SCREAMER series of Crunch speakers are designed especially for those systems that have one goal. LOUD! With features like big voice coils and powerful Pressed Paper Cones, these speakers will impress you and those near your car.



- CRSS6.5:**
- 6.5" Full Range Speaker
  - 29oz Magnet

- CRSS8:**
- 8" Full Range Speaker
  - 39oz Magnet

- CRSS8.4:**
- 8" Full Range Speaker
  - 39oz Magnet

- CRSS10.8:**
- 10" Full Range Speaker
  - 39oz Magnet

- Four Full Range High Output Speakers
- Sold as singles so you can design your system around your specific needs.
- 1.5" Voice Coil on a high temp former to control heat while pushing high SPL (Sound Pressure Levels)
- Treated Pressed Paper Cones to deliver high power with high SPL
- Poly Cotton Spider attached to the Pressed Paper Cone with cloth 'W' Surround for optimum power and sound quality.
- Polished Aluminum Phase Plug helps draw sensitive high frequencies to the center of the driver, creating a wide sound stage
- Stamp Steel Basket gives huge strength to this powerful speaker
- Spade Terminals



- CRBT4:**
- 1" High Output Bullet Tweeter
  - 4-Ohms
  - Push & Insert Style Terminals
  - Machined Die-Cast Aluminum Housing



Model	CRSS6.5	CRSS8	CRSS8.4	CRSS10.8	CRBT4
Power Rating:	100W RMS	150W RMS	150W RMS	200W RMS	100W RMS
Peak Power:	200W MAXX	300W MAXX	300W MAXX	400W MAXX	200W MAXX
Impedance:	8-Ohms	8-Ohms	4-Ohms	8-Ohms	4-Ohms
Sensitivity:	95 dB (1w/1m)	95 dB (1w/1m)	95 dB (1w/1m)	97 dB (1w/1m)	100 dB (1w/1m)
Frequency Response:	100Hz-13KHz	100Hz-10KHz	100Hz-10KHz	100Hz-8KHz	1.85KHz-21KHz





Your new CRUNCH system is only as strong as its weakest link. That's why CRUNCH recommends MAXXLINK installation accessories. MAXXLINK accessories are specifically engineered for CRUNCH amps and speakers. Using MAXXLINK accessories will ensure optimum performance from your system. We're so confident that we'll even increase your CRUNCH amplifier warranty when hooked up to a qualifying MAXXLINK amplifier installation kit.

From battery to bumper, MAXXLINK has you covered with a full line of accessories including...

**Amplifier Installation Kits:** Three levels of product that cover nearly every application and price point and all are BC-5W2 marine compliant

**RCA Signal Cables:** Three levels of RCA cables that offer class leading noise isolation and cutting-edge construction.

**Power & Ground Distribution Products:** From battery terminals, to fuse holders and distribution blocks, MAXXLINK utilizes only pure non-recycled brass to let the power flow!

**Line Output Converters:** Three levels of line output converters with two to six channels of input and output that cover nearly any input power range or application imaginable.

**HYPERcharge Capacitors:** Every amplifier can use more power and MAXXLINK gives you six different choices that cover applications from 1,000 to 10,000 watts!

**HYPERmat Sound Deadener:** MAXXLINK's install-ready flat-packed sound deadener uses a proprietary butyl based compound fused to an aluminum heat shield. Check out the car kit for a pre-cut complete car solution.

**Bulk Spooled Wire:** Based on the same wire found in MAXXLINK amp kits, bulk wire is available in a variety of lengths and gauges to cover nearly any application.



## RCA Cables

**V3**

### QUADRAtwist

Featured in V3 amplifier kits and in our best RCA signal cables. The best way to reject unwanted engine noise is to twist your conductor and shield. QUADRAtwist takes this to the next level by twisting both the right and left RCAs to add another dimension of noise rejection.

**V2**

### DUOtwist

Rejecting noise in two conductor cables requires that the conductor and shield be twisted together. All MAXXLINK DUOtwist cables use a proprietary right-angle twist to offer the highest level of rejection available in its category.

**V1**

### UNItwist

V1 signal cables employ a coaxial design but it's not your standard coaxial cable. The center conductor is not a solid strand but it has many precision woven tinned copper strands that offers improved flexibility. While it may be inexpensive, it takes sound quality and noise rejection very seriously.



## Line Output Converters

### INSTALLATION FLEXIBILITY

MAXXLINK offers several LOC choices, the demand for the VLOC-6V3 since its introduction has been insane. The VLOC-6V3 is a high-end six channel line output converter that will handle nearly an unlimited amount of voltage input. With built in signal sense turn-on the system will not bump and tick, regardless of power. Plus, summing and blending allow full control of a full range signal. The VLOC-6V3 also gives the additional flexibility of a line driver feature to allow signal boost to the amplifiers which permits the system to be properly attenuated. Once installed, the VLOC-6V3 unit allows all the system controls to operate as stock.



Also in the Line Output Converter mix are the VLOC-2V3 and VLOC-4V3, two and four channel LOC's that also offer the same signal sense turn-on technology allowing installations to be perfectly quiet of turn on bumps and thumps. LOC's are also available in 35 and 50 watt versions. Lastly, there is also a ground loop isolator available from MAXXLINK to eliminate RCA induced noise in the system. Great music in the car starts with silence and then great signal control. MAXXLINK LOC's keep it quiet and give you control.