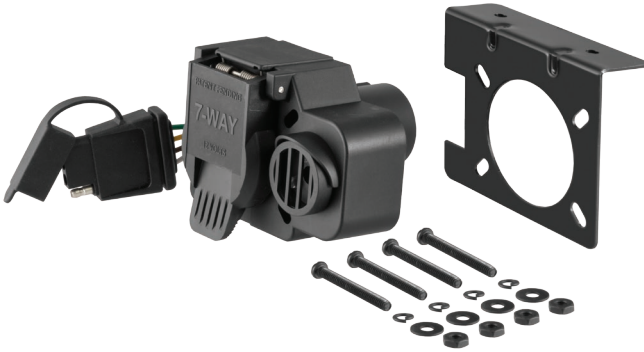


INSTALLATION INSTRUCTIONS

⚠ WARNING: DO NOT EXCEED PRODUCT RATING OR TOW VEHICLE LAMP LOAD RATING, WHICHEVER IS LOWER

MULTI-FUNCTION SOCKET WITH BACK-UP ALARM

USCAR application



WIRING LOCATION GUIDE

PICKUP TRUCKS (T)

Representative vehicle shown below

T3 - Behind driver side rear bumper



INSTALLATION / SAFETY INSTRUCTIONS

Step 1

Locate the factory 7-way attached to the hitch, behind the center of the rear bumper in position T3 as shown in the 'Wiring Location Guide'.

Step 2

Locate vehicle battery on the driver side under the hood and disconnect the negative battery terminal.

Step 3

Separate the factory socket and the 7-way.

Step 4

Insert the 57101 into the factory housing.

Step 5

Mount the bracket to the vehicle and secure the socket.

Step 6

Reinstall all items removed during install and reconnect negative battery terminal.

NOTICE

All steps must be followed to ensure the CURT socket will function properly. Once installed, test for proper function by using a test light or connecting a properly wired trailer.