

55774

BUICK ENCLAVE	GMC SIERRA
BUICK RAINIER	GMC YUKON
CADILLAC ESCALADE	HUMMER H2 & H3
CHEVY AVALANCHE	INFINITI QX56
CHEVY SILVERADO	ISUZU ASCENDER
CHEVY SUBURBAN	NISSAN PATHFINDER
CHEVY TAHOE	NISSAN TITAN
CHEVY TRAILBLAZER	OLDSMOBILE BRAVADA
GMC ACADIA	SAAB 9-7X
GMC ENVOY	SATURN OUTLOOK

WIRING LOCATION GUIDE



MUST READ FIRST!

All steps must be followed to ensure correct function of the T-Connector. To verify proper installation once installed, test by connecting a test light or properly wired trailer.

04/10/07

For Vehicles without a Factory 7-Way:

1. Locate the tow vehicle's trailer harness connector. This harness is located under the vehicle, behind the bumper, on the driver's side of the vehicle. T3

2. Remove protective cap (and save) from connector; check to see that the mating surfaces of the connectors are free of dirt. Clean if necessary.

3. Connect the T-connector adapter end to the vehicle's connector (A). Be sure that the T-connector is fully inserted with locking tabs in place.

4. Place protective cap on remaining plug end. Skip to step 7 for remaining installation instructions.

For Vehicles with a Factory 7-Way:

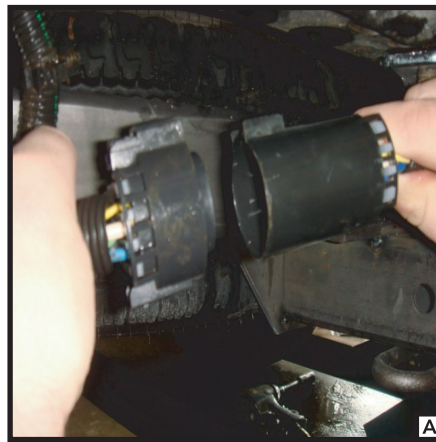
5. Locate the Factory 7-Way attached to the hitch on the driver's side.

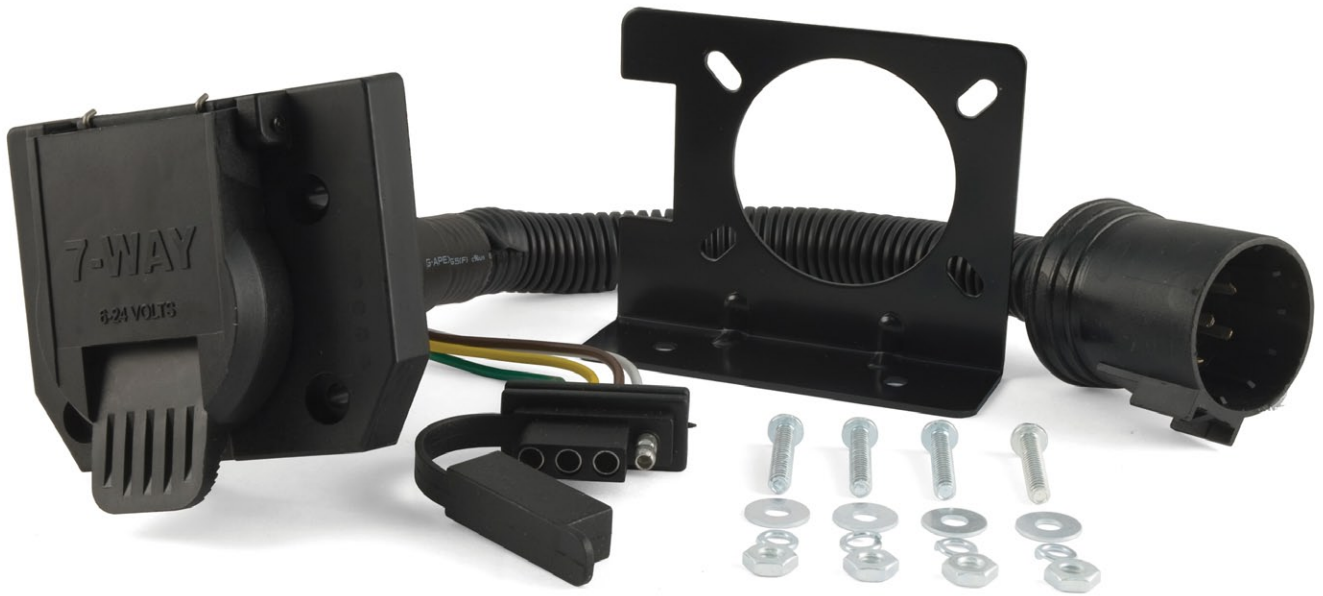
6. Separate the factory socket and 7-Way.

7. Plug the T-Connector between the Factory socket and 7-Way.

WARNING!

Verify miscellaneous items that may be hidden behind or under any surface before drilling to avoid damage and/or personal injury.





Looking for dependable trailer hitches and towing? Rely on CURT for quality and long-lasting products.