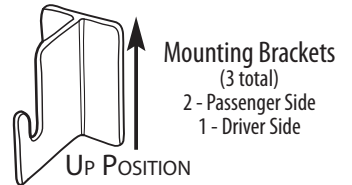
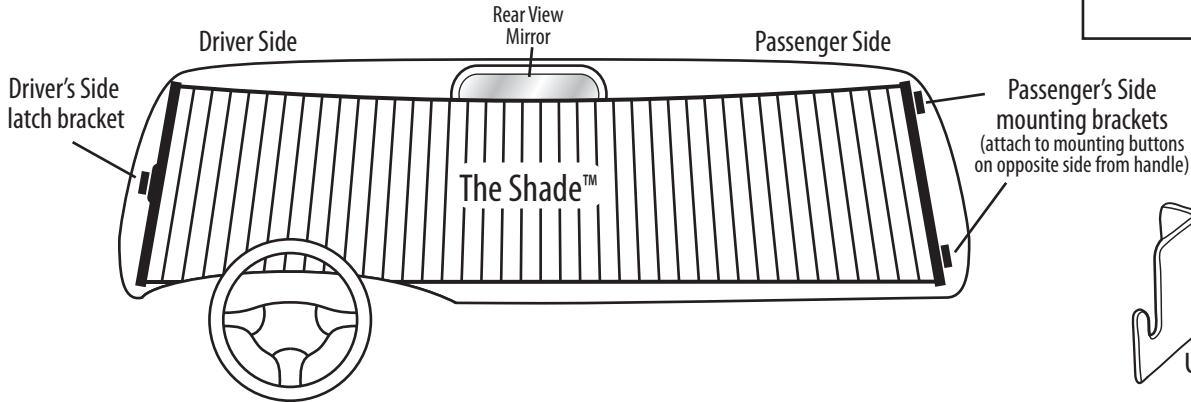


INSTALLATION INSTRUCTIONS

Windshield Mount Kit Includes:
3 Mounting Brackets
1 Alcohol Swab



IMPORTANT: For best tape adhesion: do not apply adhesive on an extremely hot windshield, tape will cure too fast. Install in shaded area if possible. Also be sure windshield is clean before installation. Wipe dry after cleaning.

A. INSTALLING THE SHADE™ BRACKETS ON THE PASSENGER SIDE



Step 1

STEP 1. Sit in the front seat on the passenger side and attach two mounting brackets to the buttons on the back side of The Shade™ (opposite side of handle, see above drawing)



Step 4

STEP 4. Open the alcohol swab and wipe the inside of the windshield where the brackets will attach.



Step 2

STEP 2. With the brackets in place, put The Shade™ next to the pillar post on the passenger side. Center between the top and bottom of the windshield. Be sure the handle is positioned so you can grab it with your right hand from the driver's side. (If not, The Shade™ needs to be flipped 180°)



Step 5a

STEP 5a. With the brackets still on The Shade™, remove the backing paper from the adhesive pads on the brackets. **5b.** Press The Shade™ towards the windshield so the brackets will stick to the glass. Get as close as possible to your markings from Step 3.



Step 5b



Step 3

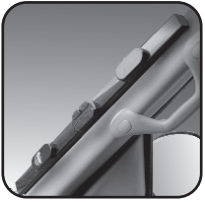
STEP 3. Mark the correct positions of the mounting brackets making sure they are both lying flat on the windshield (mark with masking tape, erasable marker, or wax cray-on).



Step 6

STEP 6. Gently slide The Shade™ off the brackets and press firmly on the flat parts of the brackets for 30 seconds. (You can view from outside while applying pressure to be sure you obtain maximum contact of adhesive to glass.)

A. INSTALLING THE DRIVER'S SIDE LATCH



Step 7

STEP 7. Place The Shade™ onto the brackets on the passenger side.



Step 9

STEP 9. (as in step 3) Mark latch bracket position with masking tape or crayon as in Step 3. Be sure to leave some room at the top of the windshield to lift The Shade™ off of the bracket when retracting. Retract Shade™ into its casing.



Step 8

STEP 8. Attach one bracket to the button on the handle of The Shade™ and extend all the way across the window next to the driver's side windshield post. Pull The Shade around the mirror (not under the mirror).

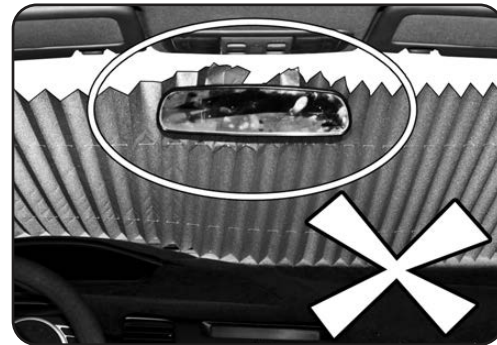
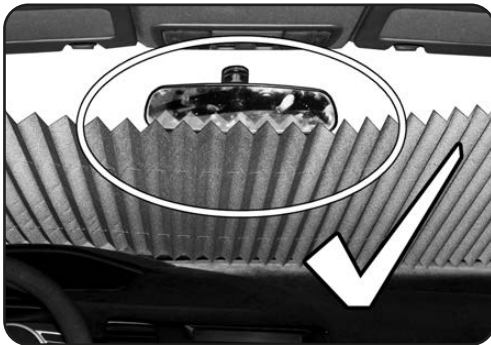


Step 10

STEP 10. Attach driver's side latch bracket (as in Steps 4-6). Make sure surface is clean. Allow adhesive to cure for 24 hrs. before using The Shade™.

INSTALLATION TIPS

1. Retract The Shade™ slowly, to avoid damaging the product or fabric.
2. Press firmly on the mounting brackets for maximum adhesion. Do not use for 24hrs after installation.
3. For maximum adhesion, use alcohol swab before you attach mounting brackets.
4. Never operate your vehicle with The Shade™ opened across the windshield.



The Shade™ should be extended around the rear-view mirror, not behind it. See photos above.

THE SHADE™ WARRANTY

Warranty is 2 years from date of purchase. Seller's and Manufacturer's only obligation shall be to replace or repair The Shade™ if it proves to be defective (valid only with receipt). Neither Seller nor Manufacturer shall be liable for any injury, loss or the inability to use the product. Before using, user shall determine the suitability of the product for their intended use, and user assumes all risks and liability whatsoever in connection thereof.

