



THE LEADER IN DOOR LOCK ACTUATORS

Door Lock Actuators | Integrated Door Lock Actuators



Dorman stands alone by providing comprehensive coverage for both Door Lock Actuators and Integrated Door Lock Actuators for over 250 million repair opportunities on the road today.

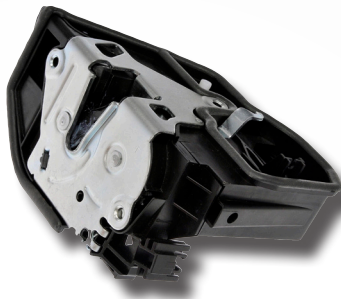
RIGOROUS TESTING ASSURES ALL DORMAN IDLAS MEET FEDERAL MOTOR VEHICLE SAFETY STANDARDS

- Crash Test Simulation
- Tensile Testing
- Salt Spray Testing
- Temperature Testing
- Cycle Testing

BACKED BY DORMAN'S LIMITED LIFETIME WARRANTY

OVER 400 SKUs AVAILABLE
WITH NEW COVERAGE ADDED MONTHLY

INTEGRATED DOOR LOCK ACTUATORS



937-800
BMW 2016-03

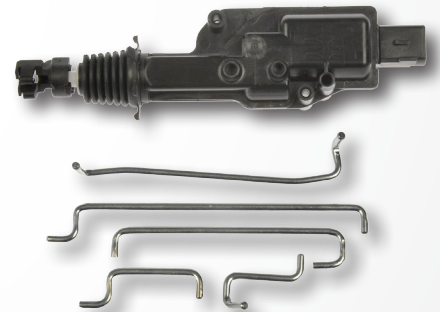


937-866
BMW 2013-99

DOOR LOCK ACTUATORS



746-149
Ford 2010-98, Lincoln 2010-03, Mazda 2009-99,
Mercury 2009-99



746-158
Ford 2003-01, Ford 1998-97, Ford 1994-92,
Lincoln 1998-90, Mercury 1994-92





THE LEADER IN DOOR LOCK ACTUATORS

HIGHLIGHTED APPLICATIONS

| Part # | Applications | VIO |
|--|--|------------|
| INTERGRATED DOOR LOCK ACTUATORS | | |
| 931-303 | Cadillac 2009-07, Chevrolet 2009-07, GMC 2009-07 | 3,157,108 |
| 931-304 | Cadillac 2009-08, Chevrolet 2009-08, GMC 2009-08 | 446,475 |
| 931-301 | Cadillac 2012-10, Chevrolet 2012-10, GMC 2012-10 | 522,666 |
| 931-300 | Chevrolet Impala 2011-06 | 1,309,756 |
| 931-636 | Dodge 2010-03 | 1,909,676 |
| 937-671 | Ford Crown Victoria 2011-04, Mercury Grand Marquis 2011-04, Mercury Marauder 2004 | 618,586 |
| 937-670 | Ford Escape 2007-01, Mercury Mariner 2007-05 | 974,408 |
| 937-641 | Ford Escape 2007-01, Mercury Mariner 2007-05 | 974,408 |
| 937-644 | Ford Escape 2007-05, Mercury Mariner 2007-05 | 523,537 |
| 940-400 | Ford Explorer 2003-91, Ford Explorer Sport Trac 2005-01, Mercury Mountaineer 2001-97 | 1,894,267 |
| 937-601 | Ford Focus 2007-00 | 1,261,650 |
| 937-604 | Ford Focus 2007-02, Mercury Cougar 2002-99 | 1,052,054 |
| 931-001 | Jeep Grand Cherokee 2004-99 | 1,093,428 |
| 931-002 | Jeep Grand Cherokee 2004-99 | 1,093,428 |
| 937-800 | BMW 2016-03 | 1,598,506 |
| 937-801 | BMW 2016-03 | 1,593,809 |
| 937-802 | BMW 2016-05 | 1,343,972 |
| 937-803 | BMW 2016-05 | 1,372,193 |
| 937-810 | BMW 325Ci 2006-01, BMW 330Ci 2006-01, BMW M3 2006-01 | 175,369 |
| 937-811 | BMW 325Ci 2006-01, BMW 330Ci 2006-01, BMW M3 2006-01 | 175,369 |
| 937-812 | BMW 325i 2006-99, BMW 325xi 2005-01, BMW 330i 2005-01, BMW 330xi 2005-01 | 325,633 |
| 937-813 | BMW 325i 2006-99, BMW 325xi 2005-01, BMW 330i 2005-01, BMW 330xi 2005-01 | 325,633 |
| 937-866 | BMW 2013-99 | 1,774,830 |
| DOOR LOCK ACTUATORS | | |
| 746-302 | Acura 2006-02, Honda 2010-01 | 3,137,601 |
| 746-362 | Acura 2006-99, Honda 2009-98 | 4,457,422 |
| 746-368 | Acura CL 2003-01, Acura MDX 2006-01, Acura TL 2003-99, Honda Accord 2002-98, Honda Odyssey 2004-01 | 2,640,387 |
| 746-301 | Acura RSX 2006-02, Honda Accord 2007-03, Honda Odyssey 2010-05, Honda Pilot 2008-03 | 1,861,897 |
| 746-367 | Acura TL 2008-04, Acura TSX 2008-04, Honda Accord 2007-03, Honda Ridgeline 2010-06 | 2,359,603 |
| 746-366 | Acura TL 2008-04, Acura TSX 2008-04, Honda Accord 2007-03, Honda Ridgeline 2010-08 | 2,452,496 |
| 746-014 | American Motor Company (AMC) 1988-80, Chrysler 1996-81, GM 2005-77 | 9,356,298 |
| 746-011 | Buick 2007-91, Cadillac 2011-92, Chevrolet 2008-93, GMC 2007-94, Oldsmobile 2004-91, Pontiac 2006-92 | 27,107,375 |
| 746-017 | Buick 2007-91, Cadillac 2011-92, Chevrolet 2008-93, GMC 2007-94, Oldsmobile 2004-91, Pontiac 2006-92 | 26,867,349 |
| 746-015 | Cadillac 2006-02, Chevrolet 2006-00, GMC 2006-00 | 2,614,123 |
| 746-253 | Chrysler 2003-02, Chrysler 2000-96, Dodge 2000-96, Plymouth 2000-96 | 1,239,288 |
| 746-259 | Chrysler 2007-01, Dodge 2007-01 | 2,225,743 |
| 746-147 | Ford 1994-80, Lincoln 1987-82, Mercury 1994-80 | 1,482,033 |
| 746-158 | Ford 2003-01, Ford 1998-97, Ford 1994-92, Lincoln 1998-90, Mercury 1994-92 | 1,473,001 |
| 746-145 | Ford 2003-89, Ford 1987-80, Lincoln 1994-88, Lincoln 1983-80, Mercury 2003-80 | 3,858,097 |

