

INSTALL/REMOVAL INSTRUCTIONS: STEERING COLUMN AND SHIFTER

ATTENTION: Refer to the appropriate shop manual for your vehicle to obtain specific service procedures for this part. If you do not have a service manual or lack the skill to install this part, it is recommended that you seek the services of a qualified technician. Pay special attention to all cautions and warnings included in the shop manual. Read and follow all instructions carefully.

REMOVAL/INSTALL OF STEERING COLUMN AND SHIFTER (905-023)

Ford F-150 Raptor Crew Cab and Extended Cab Pickup 6.2L V8 4WD 2014–2011

**PLEASE WEAR
SAFETY GLASSES!**

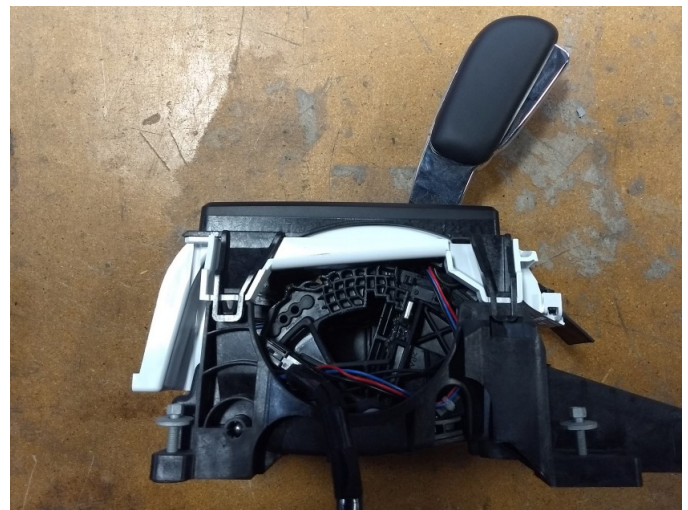
**Tools required for removal
and installation of steering column
and shifter:**

- Wire cutters
- Wire stripper
- Crimper
- Flathead screw driver



Instructions

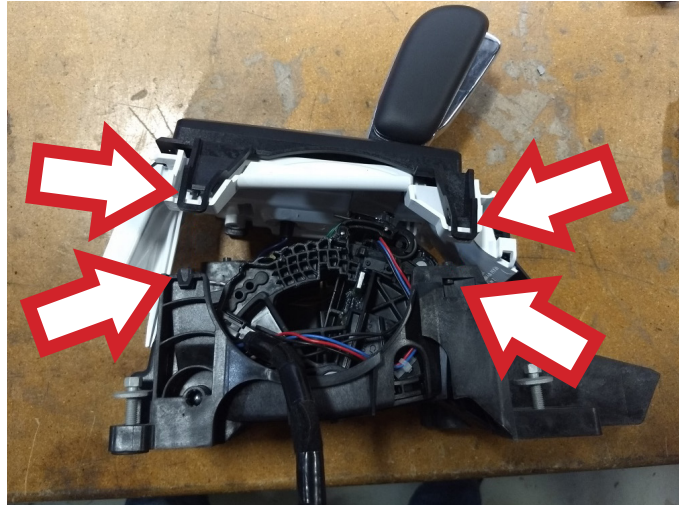
STEP 1: Remove the shifter assembly from the vehicle, following the OE service procedure. (Photo shows shifter assembly after removal from vehicle.)



INSTALL/REMOVAL INSTRUCTIONS: STEERING COLUMN AND SHIFTER

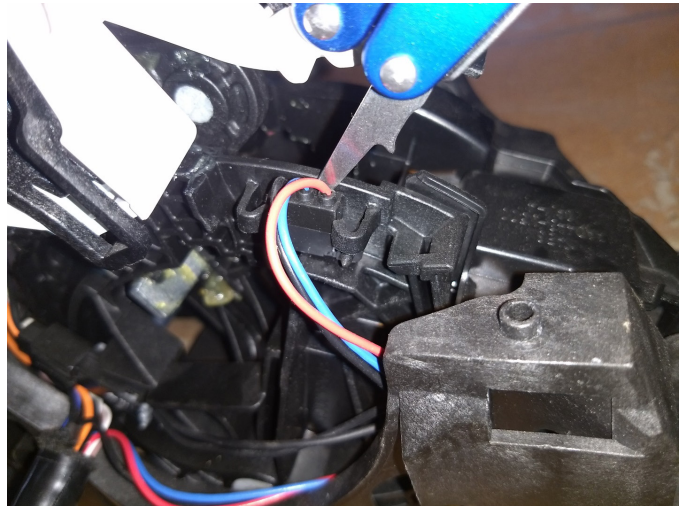
ATTENTION: Refer to the appropriate shop manual for your vehicle to obtain specific service procedures for this part. If you do not have a service manual or lack the skill to install this part, it is recommended that you seek the services of a qualified technician. Pay special attention to all cautions and warnings included in the shop manual. Read and follow all instructions carefully.

STEP 2: Unsnap the top cover/bezel around the shifter. Use the screw driver to unclip the bezel in the areas indicated by the arrows.



STEP 3: Move the shifter to the lowest gear position to move the bezel out of the way.

STEP 4: Use a screwdriver to pop the old switch out of the shifter base. Use moderate pressure to pry the old switch off of the shifter base.



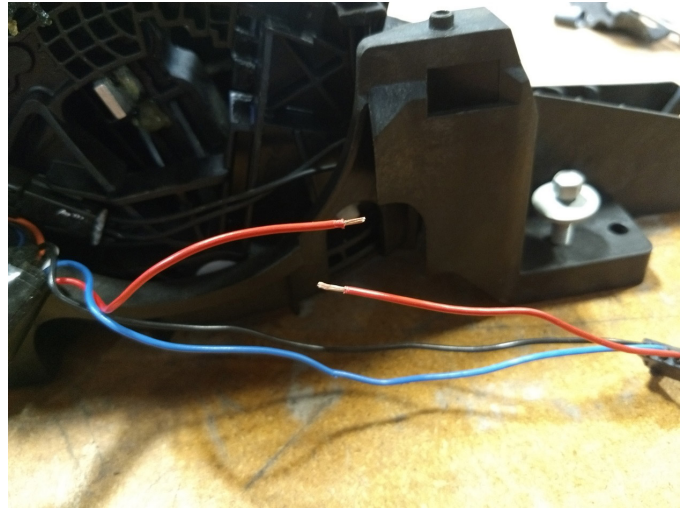
STEP 5: Cut the factory wire tie.

STEP 6: Cut the first wire, and strip back about 5mm of insulation. The wires are 22 AWG.

INSTALL/REMOVAL INSTRUCTIONS: STEERING COLUMN AND SHIFTER

ATTENTION: Refer to the appropriate shop manual for your vehicle to obtain specific service procedures for this part. If you do not have a service manual or lack the skill to install this part, it is recommended that you seek the services of a qualified technician. Pay special attention to all cautions and warnings included in the shop manual. Read and follow all instructions carefully.

STEP 7: Cut the matching color wire on the new switch to the appropriate length, and strip back the insulation about 5mm. Cut and strip the wires. The wire on the left is the factory wire going to the shifter harness, and the wire on the right is from the new switch.



STEP 8: Insert the stripped wires into the provided butt connector and crimp. Crimp the wires and provided connector with an appropriate crimper.

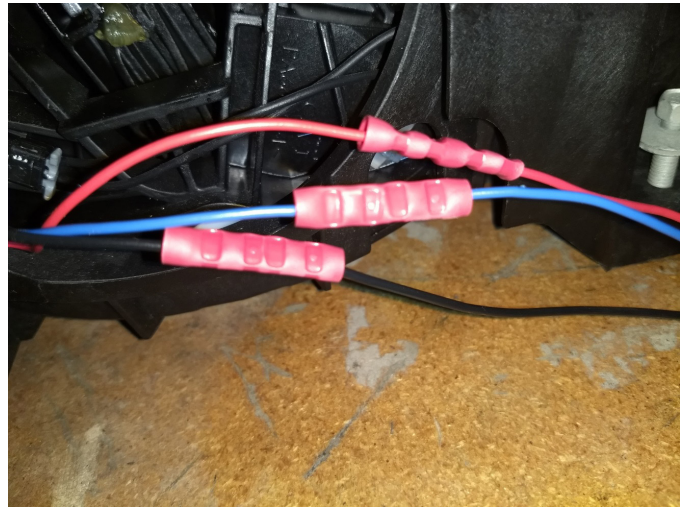


STEP 9: Repeat steps 6 to 8 for the rest of the three switch wires (red, black, and blue wires).

INSTALL/REMOVAL INSTRUCTIONS: STEERING COLUMN AND SHIFTER

ATTENTION: Refer to the appropriate shop manual for your vehicle to obtain specific service procedures for this part. If you do not have a service manual or lack the skill to install this part, it is recommended that you seek the services of a qualified technician. Pay special attention to all cautions and warnings included in the shop manual. Read and follow all instructions carefully.

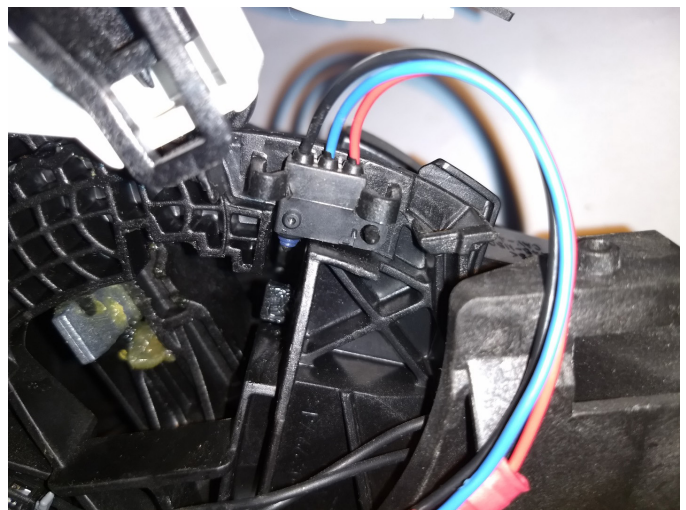
STEP 10: Staggering the location of the connectors is recommended to make routing and securing the wires easier. Stagger the position of the connectors slightly.



STEP 11: Route the wires along the OE path and away from any moving parts.



STEP 12: Reinstall the new switch onto the shifter base. Make sure to align the hole in the switch with the post on the shifter. Align the hole in the switch with the post on the shifter base, and press switch until it clips securely onto the shifter base.



INSTALL/REMOVAL INSTRUCTIONS: STEERING COLUMN AND SHIFTER

ATTENTION: Refer to the appropriate shop manual for your vehicle to obtain specific service procedures for this part. If you do not have a service manual or lack the skill to install this part, it is recommended that you seek the services of a qualified technician. Pay special attention to all cautions and warnings included in the shop manual. Read and follow all instructions carefully.

STEP 13: Ensure that the switch is secure on the shifter base, and that the switch is activated when the shifter lever is in the park position. You should be able to see and hear the actuation of the switch.

STEP 14: Secure the wires to the shifter base. A wire tie or electrical tape is recommended.



STEP 15: Reinstall the top cover/bezel.

STEP 16: Reinstall the shifter assembly into the vehicle.

[View other replacement electrical parts made by Dorman on our website.](#)