



Installation Instructions

PART NUMBERS: 76183, 84183, CQT76183

Applications:

Years	Make	Models
2018-Current*	Audi	Q5 / SQ5

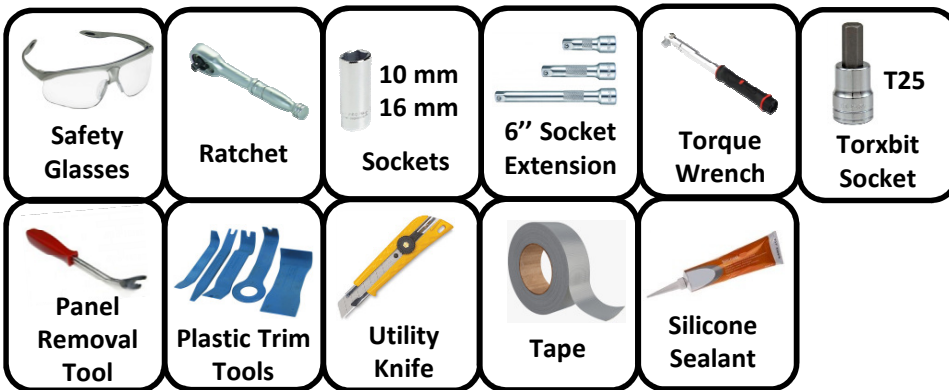
Installation Time: 90 min

The time listed above is the average time for professional installers. If you do not feel comfortable performing this installation on your own or are in need of assistance, please contact a professional installer.



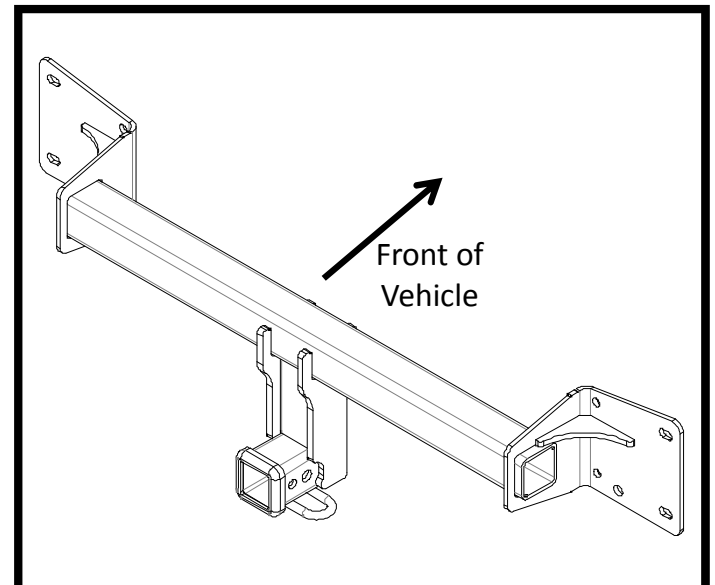
Representative Vehicle Photo

Equipment Required:



DO NOT EXCEED LOWER OF TOWING VEHICLE MANUFACTURER'S RATING OR:

Hitch Type	Max Gross Trailer Weight	Max Tongue Weight
Weight Carrying	5000 lb. (2270 kg)	750 lb. (340 kg)
Weight Distributing	N/A	N/A



Hitch Illustration

Always wear SAFETY GLASSES when installing hitch

Installation Instructions

PART NUMBERS: 76183, 84183, CQT76183

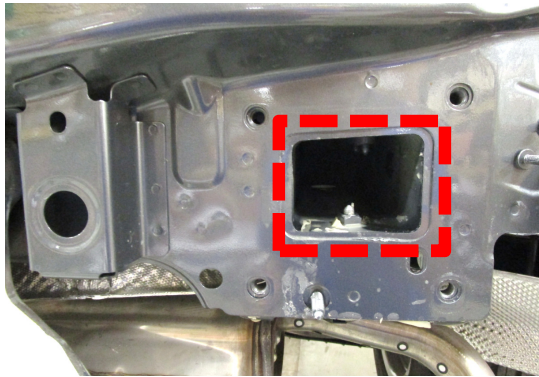


Figure 3

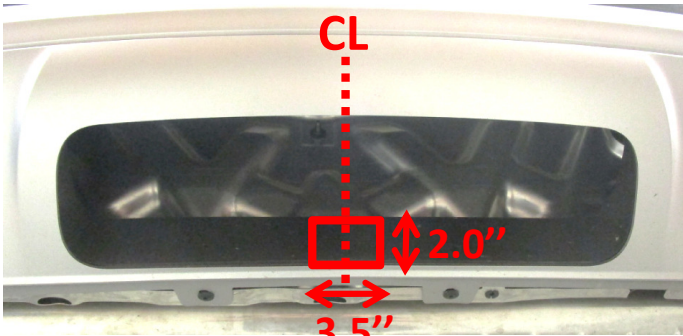


Figure 4

(8) Existing factory M10 bolts

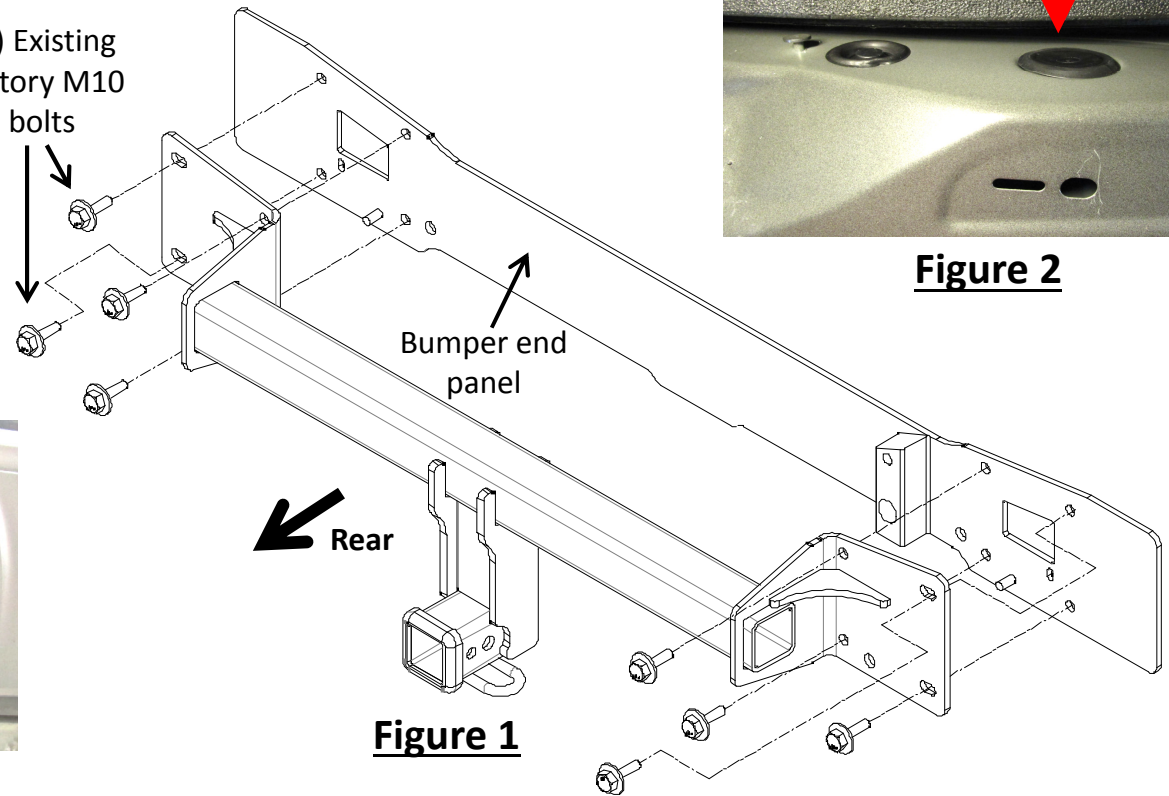


Figure 1

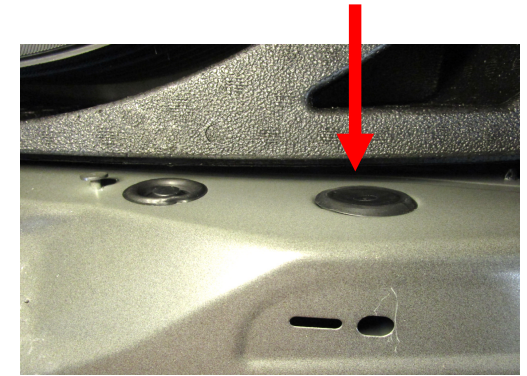


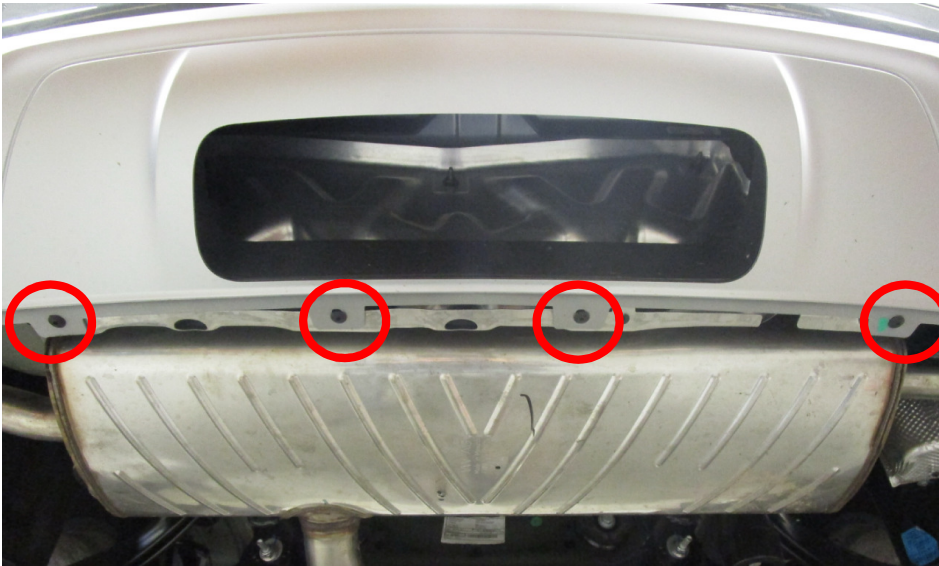
Figure 2

1. **Remove fascia** – (a) Using T25 torx bit, remove (4) screws from rear bottom fascia.
 (b) Using T25 torx bit and 10 mm socket, remove (1) screw and (1) plastic flange nut from wheel well liner, both sides.
 (c) Using plastic trim tools, remove the lower part of wheel well trim by unclipping the tabs from fascia and gently pulling it outward, both sides.
 (d) Using T25 torx bit, remove (3) screws located vertically in the upper area behind the wheel well liner and (1) screw behind wheel well trim, both sides.
 (e) Open lift gate. Using T25 torx bit, remove (2) round plastic screws near trunk weather seal. Remove rear cargo flooring.
 (f) Using panel removal tool, remove scuff plate by unclipping the tabs and pulling it upward. Using 10 mm socket, remove (2) flange nuts from two recessed bumper fascia studs under scuff plate covered by rubber plug, see **Figure 2**.
 (g) Remove driver side interior panel. Unclip (2) wiring harness if present. Behind insulation material, using 10 mm socket, remove (1) flange nut bumper fascia stud inside the compartment. Repeat same steps on passenger side but **DO NOT** remove any wiring harness.
 (h) Using plastic trim panel tool, remove the fascia starting at the outer edges near wheel wells, and gently pulling the fascia.
2. **Remove bumper beam** – Using 16 mm socket, remove (8) M10 factory bolts from bumper beam and cross bar above bumper beam. Return bumper beam and cross bar to owner.
3. **Install hitch** – Use silicone sealant to seal around the opening on the end panel both sides, see **Figure 3**. Raise the hitch into position and loosely install (8) existing factory M10 bolts to the hitch, see **Figure 1**.
4. **Tighten all M10 fasteners with torque wrench to 53 Lb.-Ft. (72 N*M).**
5. **Trim fascia** – Using tape and utility knife, cut a notch in the lower part of fascia as shown in **Figure 4**. **DO NOT** cut the wiring behind center lower fascia.
6. Reinstall all fasteners, wiring harness, panels, rubber plugs, scuff plate, wheel well trim, and fascia removed in Step 1.

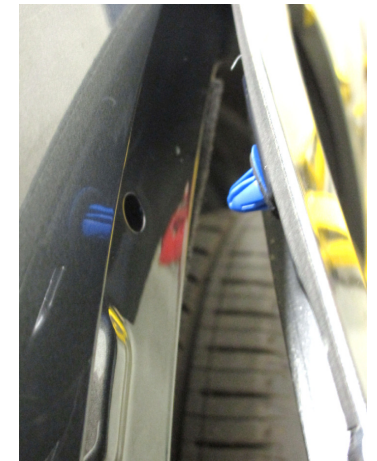
Proper torque is needed to keep the hitch secure to the vehicle when towing.

Note: check hitch frequently, making sure all fasteners and ball are properly tightened. If hitch is removed, plug all holes in trunk pan or other body panels to prevent entry of water and exhaust fumes. A hitch or ball which has been damaged should be removed and replaced. Observe safety precautions when working beneath a vehicle and wear eye protection. Do not cut access or attachment holes with a torch. This product complies with safety specifications and requirements for connecting devices and towing systems of the state of New York, V.E.S.C. Regulation V-5 and SAE J684.

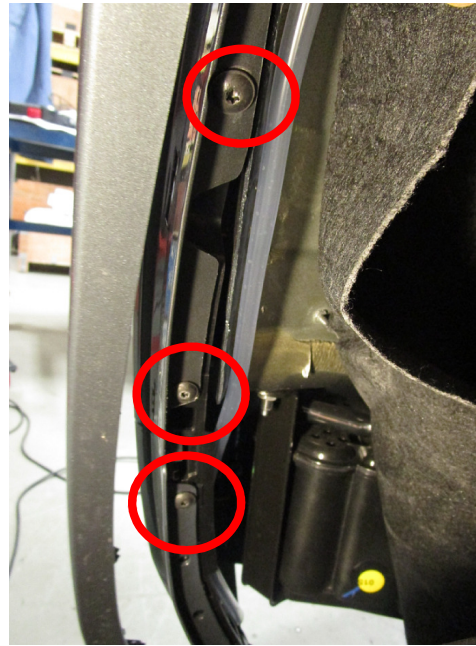
1. Remove fascia – (a) Using T25 torx bit, remove (4) screws from rear bottom fascia.



(b) Using T25 torx bit and 10 mm socket, remove (1) screw and (1) plastic flange nut from wheel well liner, both sides.
(c) Using plastic trim tools, remove the lower part of wheel well trim by unclipping the tabs from fascia and gently pulling it outward, both sides.



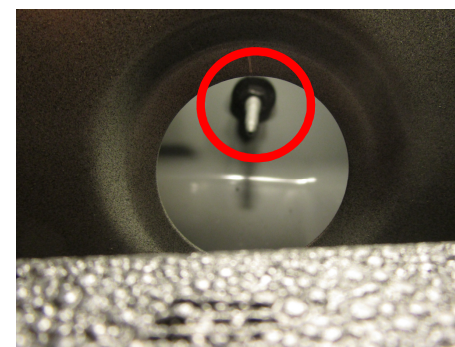
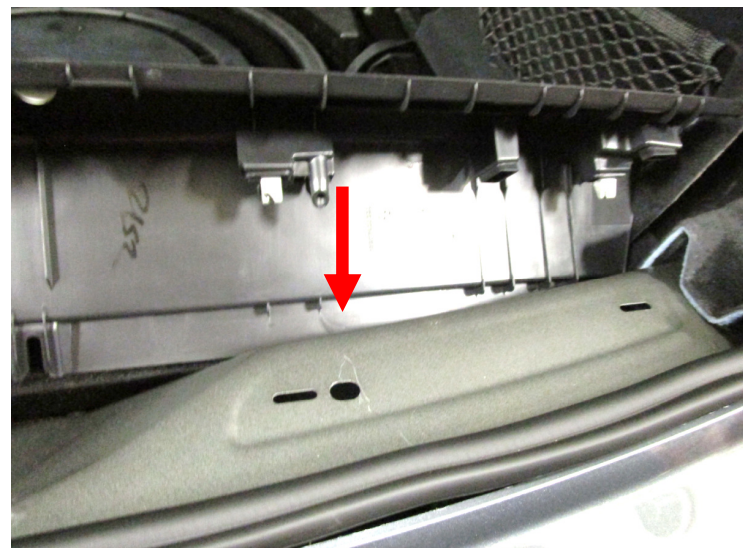
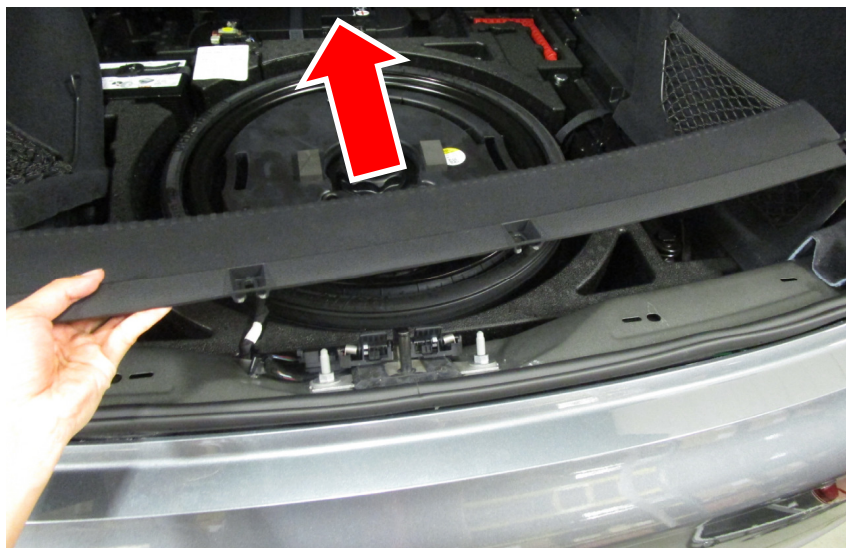
1. Remove fascia – (d) Using T25 torx bit, remove (3) screws located vertically in the upper area behind the wheel well liner and (1) screw behind wheel well trim, both sides.



(e) Open lift gate. Using T25 torx bit, remove (2) round plastic screws near trunk weather seal. Remove rear cargo flooring.

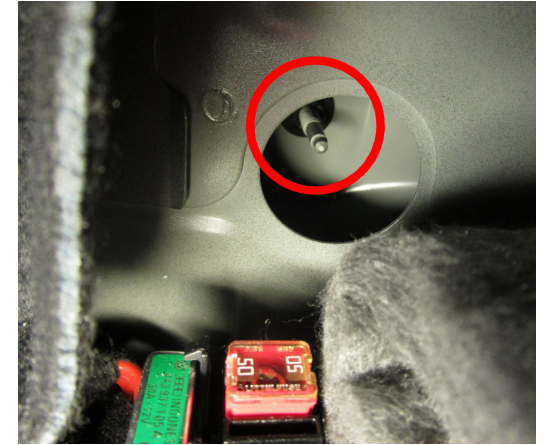
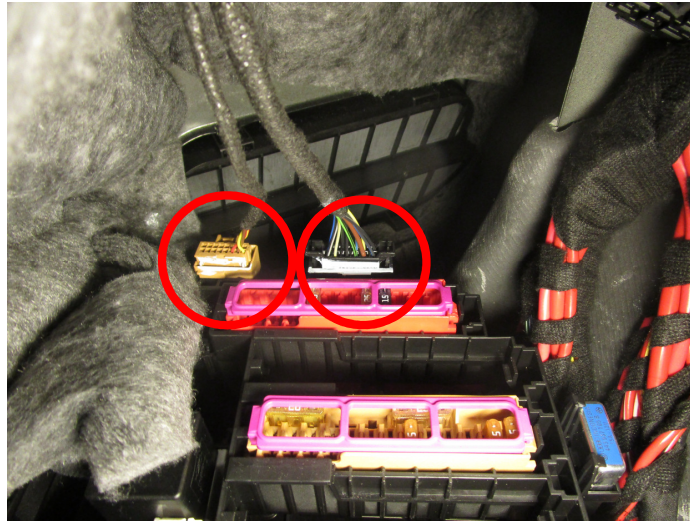
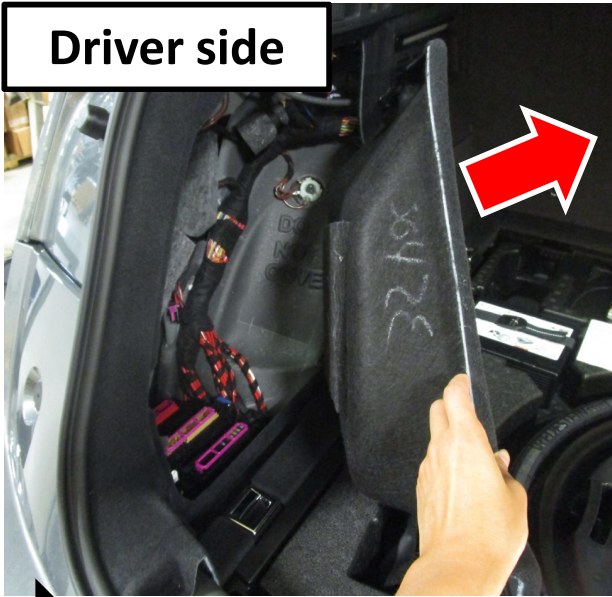


1. Remove fascia – (f) Using panel removal tool, remove scuff plate by unclipping the tabs and pulling it upward. Using 10 mm socket, remove (2) flange nuts from two recessed bumper fascia studs under scuff plate covered by rubber plug, see [Figure 2](#).



1. Remove fascia - (g) Remove driver side interior panel. Unclip (2) wiring harness if present. Behind insulation material, using 10 mm socket, remove (1) flange nut bumper fascia stud inside the compartment. Repeat same steps on passenger side but DO NOT remove any wiring harness.

Driver side



Passenger side



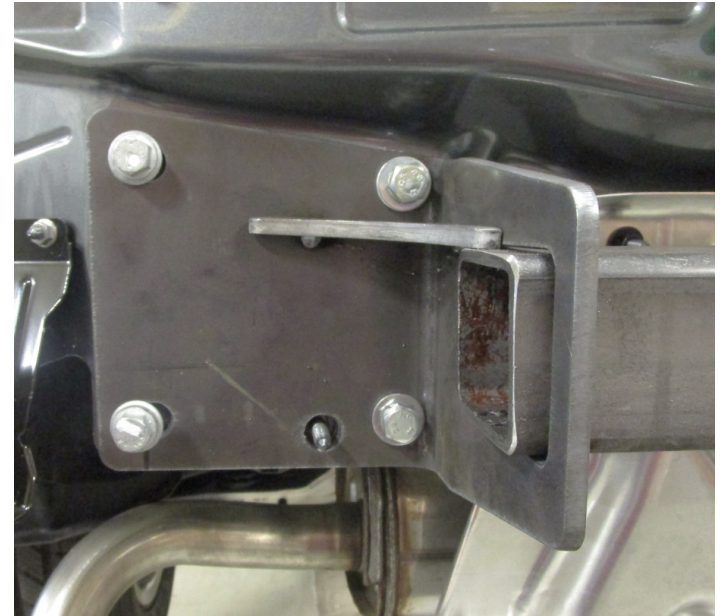
1. Remove fascia - (h) Using plastic trim panel tool, remove the fascia starting at the outer edges near wheel wells, and gently pulling the fascia.



2. Remove bumper beam – Using 16 mm socket, remove (8) M10 factory bolts from bumper beam and cross bar above bumper beam. Return bumper beam and cross bar to owner.



3. Install hitch –Use silicone sealant to seal around the opening on the end panel both sides, see **Figure 3**. Raise the hitch into position and loosely install (8) existing factory M10 bolts to the hitch and end panel, see **Figure 1**.

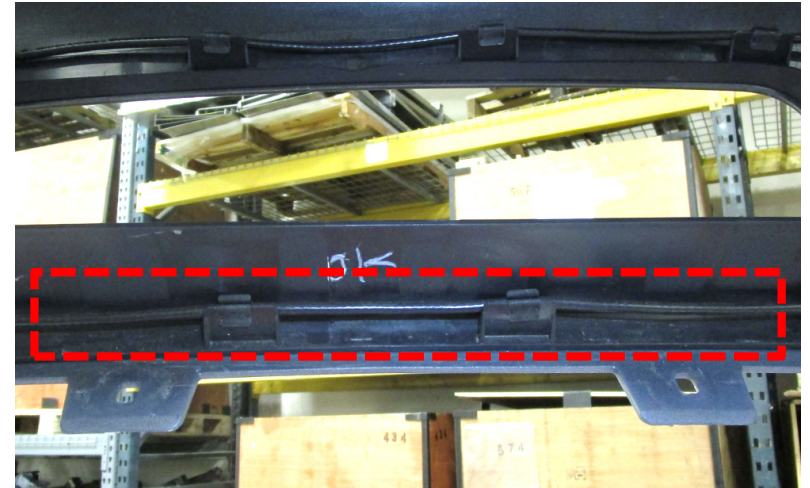
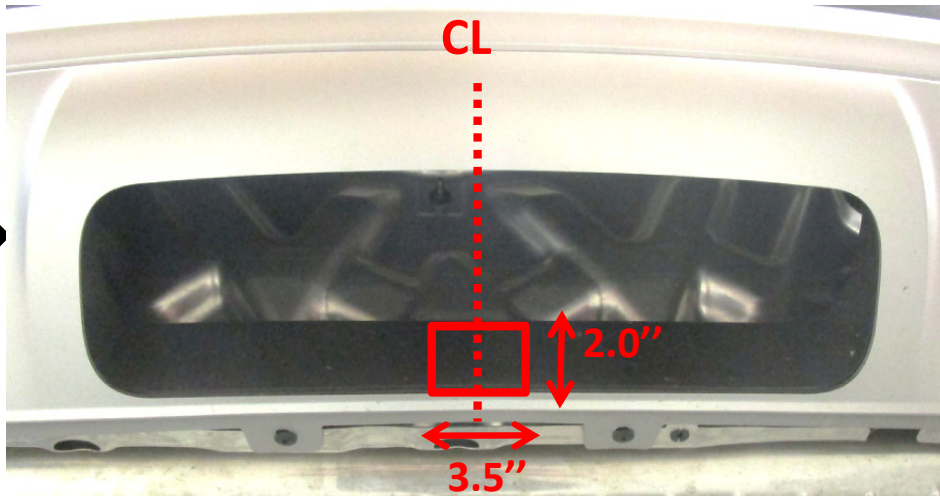


4. Tighten all M10 fasteners with torque wrench to 53 Lb.-Ft. (72 N*M).

⚠ Proper torque is needed to keep the hitch secure to the vehicle when towing.



5. **Trim fascia** – Using tape and utility knife, cut a notch in the lower part of fascia as shown in **Figure 4**. **DO NOT** cut the wiring behind center lower fascia.



6. Reinstall all fasteners, wiring harness, panels, rubber plugs, scuff plate,, wheel well trim, and fascia removed in Step 1.



Check out a selection of trailer hitches and towing offered in our online store.