

# Installation Instructions

PART NUMBERS: 76577, 84577, CQT76577

## WARNING

To prevent **SERIOUS INJURY, DEATH or PROPERTY DAMAGE:**

- **ALWAYS** read, understand and follow warnings and instructions for your hitch **BEFORE** installation. Keep for future reference.
- **DO NOT** cut, weld or modify this receiver.
- **CHECK** all fasteners are tight and your hitch is securely mounted to your vehicle periodically.
- **ALWAYS** read, understand and follow all warnings and instructions for your vehicle and for other accessories you will use with your hitch **BEFORE** use.
- **LOAD** the trailer heavier in front.
- **DO NOT** exceed lower of towing vehicle manufacturer's rating or:

Hitch Type	Max Gross Trailer Weight	Max Tongue Weight
Weight Carrying	3500 lb. (1587 kg)	525 lb. (238 kg)
Weight Distributing	N/A	N/A

- **ALWAYS** wear your seatbelt.
- **SLOW DOWN** when towing, **NEVER** exceed any posted speed limit.
- If **EXCESS SWAY** occurs, take your foot off the gas pedal and hold the steering wheel as steady as possible. **DO NOT** apply your brakes and **DO NOT** speed up.

# Installation Instructions

**PART NUMBERS: 76577, 84577, CQT76577**

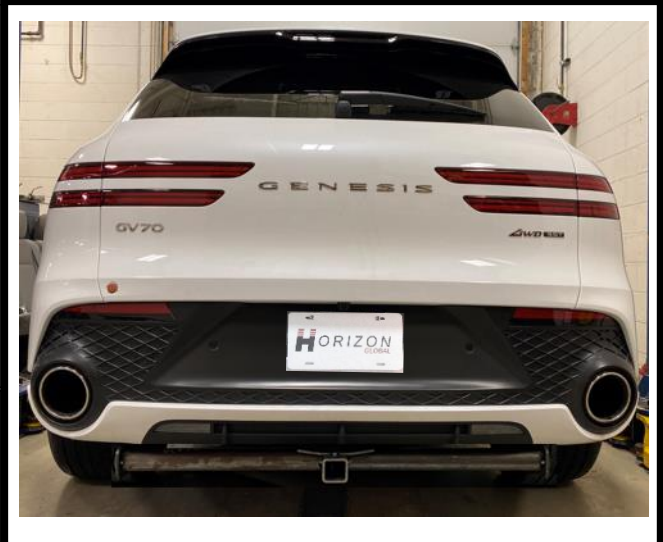
## Applications:

Years	Make	Models
2022-Current*	Genesis	GV70

\*Visit our website for the most up to date information regarding application years and trim levels.

## Installation Time: **60 min**

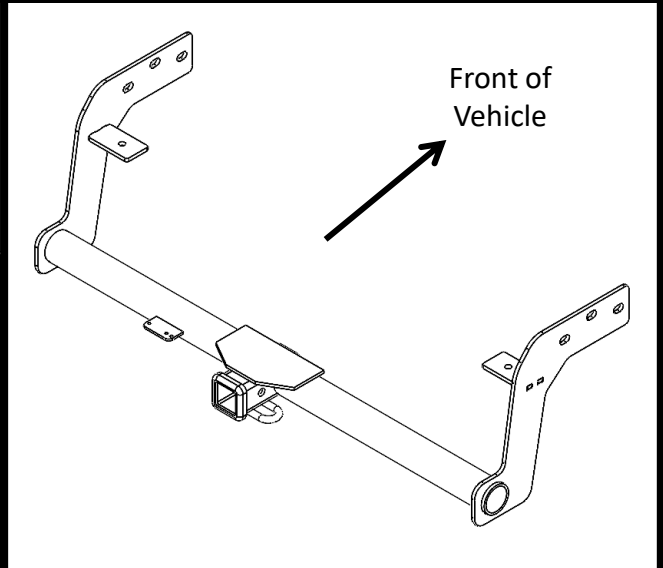
The time listed above is the average time for professional installers. If you do not feel comfortable performing this installation on your own or are in need of assistance, please contact a professional installer.



**Representative Vehicle Photo**

## Equipment Required:

Safety Glasses	Ratchet	11/16" 19 mm Sockets	Soapy water	Wire Brush	Drill bit 1/2"	Marker
6" Socket Extension	Torque Wrench	Die Grinder	Exhaust Removal Pliers	Flat Head Screwdriver	Drill	



**Hitch Illustration**

**DO NOT EXCEED LOWER OF TOWING VEHICLE MANUFACTURER'S RATING OR:**








Hitch Type	Max Gross Trailer Weight	Max Tongue Weight
Weight Carrying	3500 lb. (1587 kg)	525 lb. (238 kg)
Weight Distributing	N/A	N/A

**Always wear SAFETY GLASSES when installing hitch**

# Installation Instructions

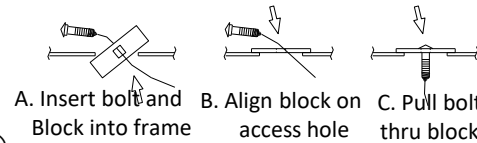
**PART NUMBERS: 76577, 84577, CQT76577**

**Fastener Kit: 76577F1**

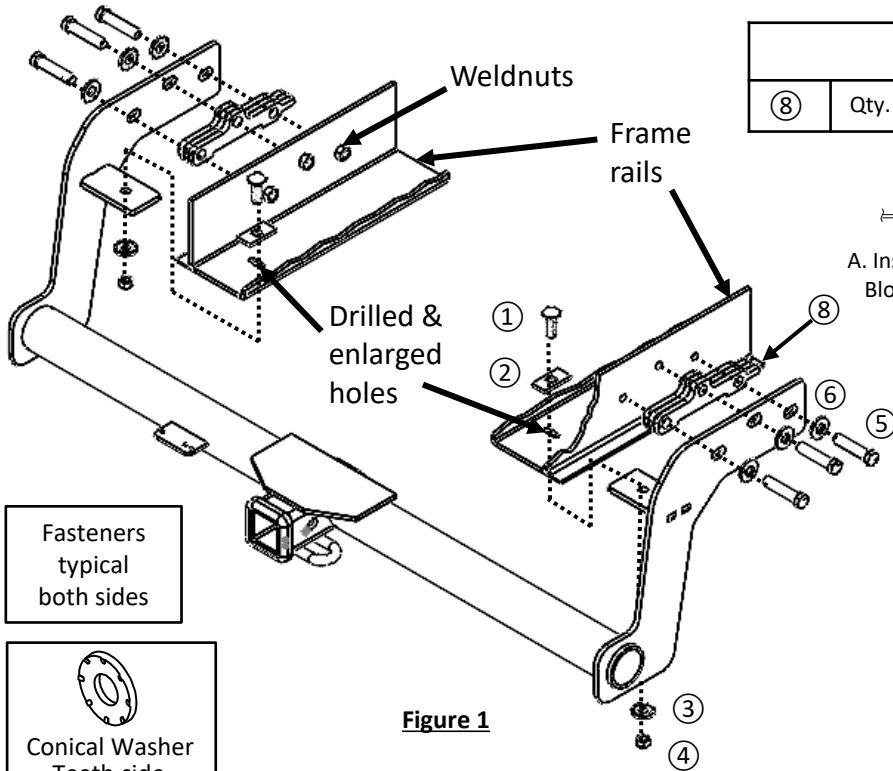
①	Qty. (2)	BOLT CARR. 7/16-14X1.50 GR5	
②	Qty. (2)	BLOCK 3/16X1.00X2.00	
③	Qty. (2)	WASHER CONICAL 7/16	
④	Qty. (2)	NUT 7/16-14	
⑤	Qty. (6)	BOLT M12 X 1.25 X 65 CL10.9	
⑥	Qty. (6)	WASHER CONICAL 1/2	
⑦	Qty. (2)	7/16 PULL WIRE	

**Fastener Kit: 76577F2**

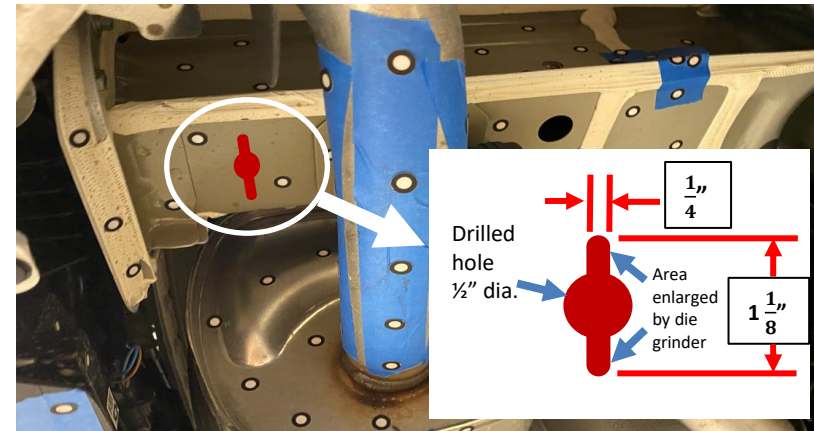
⑧	Qty. (2)	SPACER PLATE	
---	----------	--------------	---



**Figure 3**



**Figure 1**



**Figure 2**



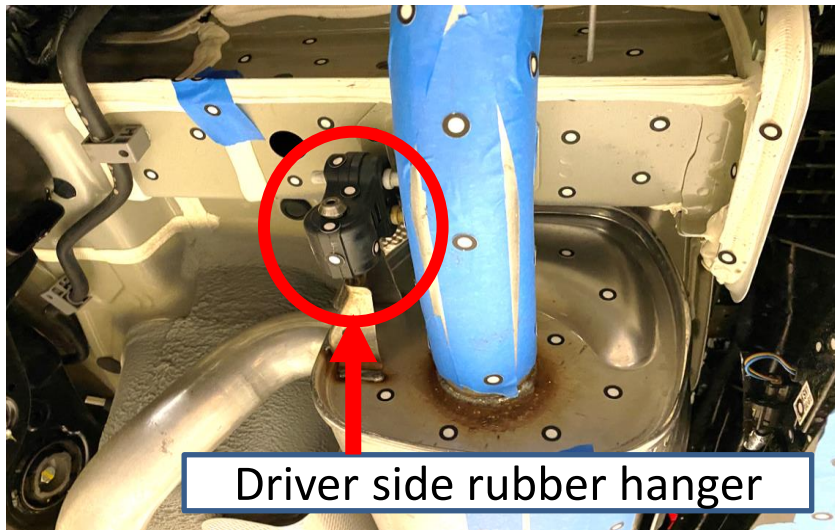
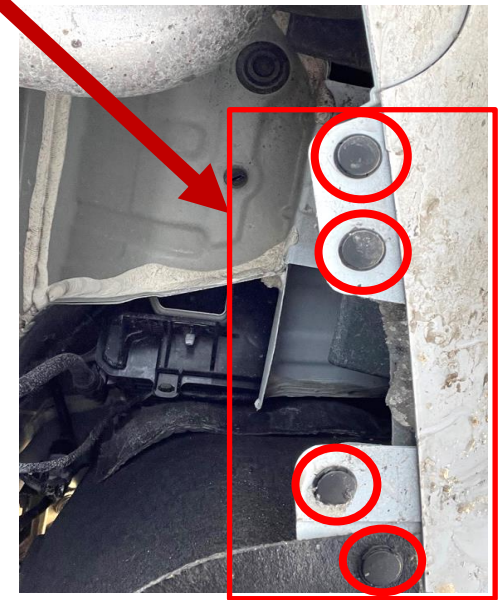
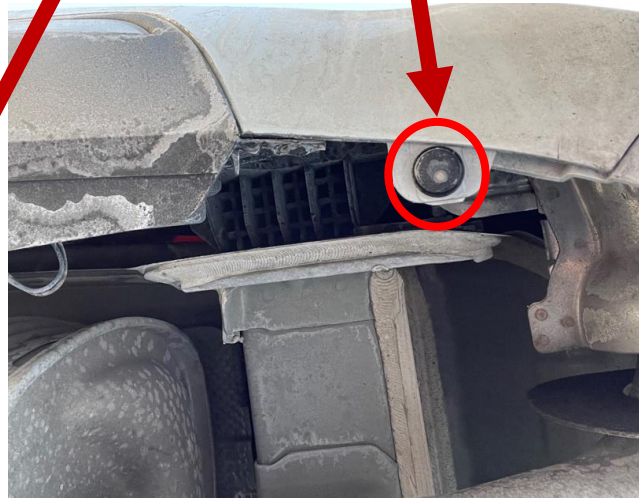
- Lower exhaust**– Using a flat head screwdriver remove (6) plastic rivets from the bottom of fascia on passenger side and repeat that for driver side. Using an exhaust hanger removal plier, remove (1) rearmost rubber hangers, per side. A spray of lubricant or soapy water on rubber hangers makes them slide off metal pins more easily. Lower the exhaust mufflers by gently pulling the lower fascia. **NOTE: Be sure that exhaust is properly supported before removing rubber hangers.**
- Drill & enlarge holes** – Remove the stickers from weldnut holes on the frame rail if present. Using wire brush to clean the weldnuts if needed. Raise the hitch into position with spacer plates and temporarily secure the hitch with all M12 bolts (⑤). Use marker to mark a drill point at bottom frame rails based on hitch bracket hole center, both sides, see **Figure 1**. Make sure the hitch sits straight with location when marked. Lower the hitch down and use drill to drill a 1/2" hole at marked location, per side. Use a die grinder to enlarge the holes to feed block (②) into vehicle frame rails, both side, as shown in **Figure 2**.
- Install hitch** – Feed the carriage bolts (①) and blocks (②) through drilled holes using the pull wires (⑦), pull the bolts through blocks, see **Figures 1 & 3**. Leave pull wires attached. Raise the hitch into position and feed the pull wires through bracket bottom holes. Loosely install spacer plate (⑧), conical washers (⑥) and bolts (⑤) to the hitch, then remove the pull wires and loosely install the conical washers (③) and nuts (④) to the carriage bolts (①).
- Tighten all M12 X 1.25 X 65 fasteners to 76 ft.lb. (103 N\*m) and all 7/16-14x1.50 fasteners to 50 ft.lb (68 N\*m) with torque wrench.**
- Reinstall exhaust muffler and rivets.

**Proper torque is needed to keep the hitch secure to the vehicle when towing.**

Note: check hitch frequently, making sure all fasteners and ball are properly tightened. If hitch is removed, plug all holes in trunk pan or other body panels to prevent entry of water and exhaust fumes. A hitch or ball which has been damaged should be removed and replaced. Observe safety precautions when working beneath a vehicle and wear eye protection. Do not cut access or attachment holes with a torch. This product complies with safety specifications and requirements for connecting devices and towing systems of the state of New York, V.E.S.C. Regulation V-5 and SAE J684.

**1. Lower exhaust**– Using a flat head screwdriver remove (6) plastic rivets from the bottom of fascia on passenger side and repeat that for driver side. Using an exhaust hanger removal plier, remove (1) rearmost rubber hangers, per side. A spray of lubricant or soapy water on rubber hangers makes them slide off metal pins more easily. Lower the exhaust mufflers by gently pulling the lower fascia. **NOTE: Be sure that exhaust is properly supported before removing rubber hangers.**

Rivets on passenger side of the vehicle

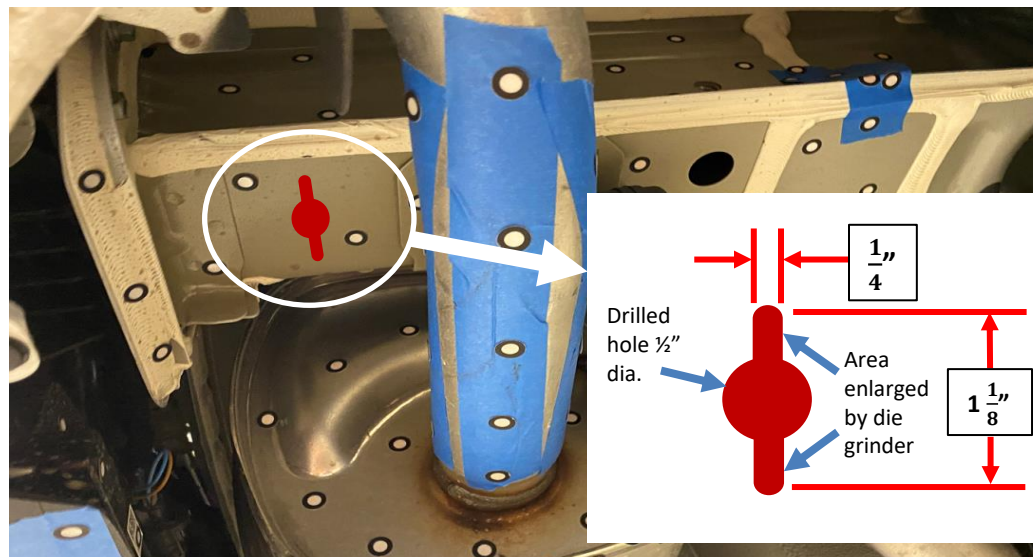


Driver side rubber hanger



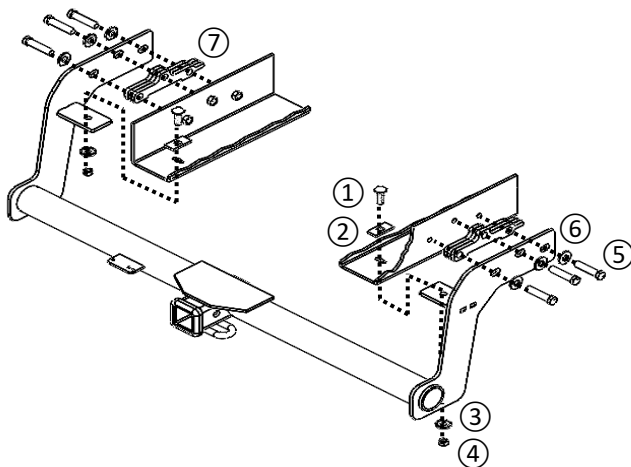
Passenger side rubber hanger

**2. Drill & enlarge holes** – Remove the stickers from weldnut holes on the frame rail if present. Using wire brush to clean the weldnuts if needed. Raise the hitch into position with spacer plates and temporarily secure the hitch with all M12 bolts (5). Use marker to mark a drill point at bottom frame rails based on hitch bracket hole center, both sides, see **Figure 1**. Make sure the hitch sits straight with location when marked. Lower the hitch down and use drill to drill a 1/2" hole at marked location, per side. Use a die grinder to enlarge the holes to feed block (2) into vehicle frame rails, both side, as shown in **Figure 2**.




**Figure-2**

**3. Install hitch** – Feed the carriage bolts (1) and blocks (2) through drilled holes using the pull wires (7), pull the bolts through blocks, see **Figures 1 & 3**. Leave pull wires attached. Raise the hitch into position and feed the pull wires through bracket bottom holes. Loosely install spacer plate (8), conical washers (6) and bolts (5) to the hitch, then remove the pull wires and loosely install the conical washers (3) and nuts (4) to the carriage bolts (1).



4. **Tighten all M12 X 1.25 X 65 fasteners to 76 ft.lb. (103 N\*m) and all 7/16-14x1.50 fasteners to 50 ft.lb (68 N\*m) with torque wrench.**

 Proper torque is needed to keep the hitch secure to the vehicle when towing.

5. Reinstall exhaust muffler and rivets.



Discover other trailer hitches and towing on our website.