



Installation Instructions

PART NUMBERS: 24933, 60371, 77320

Applications:

Years	Make	Models
2015-Current*	Mazda	CX-3

*Visit our website for the most up to date information regarding application years and trim levels.

Installation Time: 25 min.

The time listed above is the average time for professional installers. If you do not feel comfortable performing this installation on your own or are in need of assistance, please contact a professional installer.



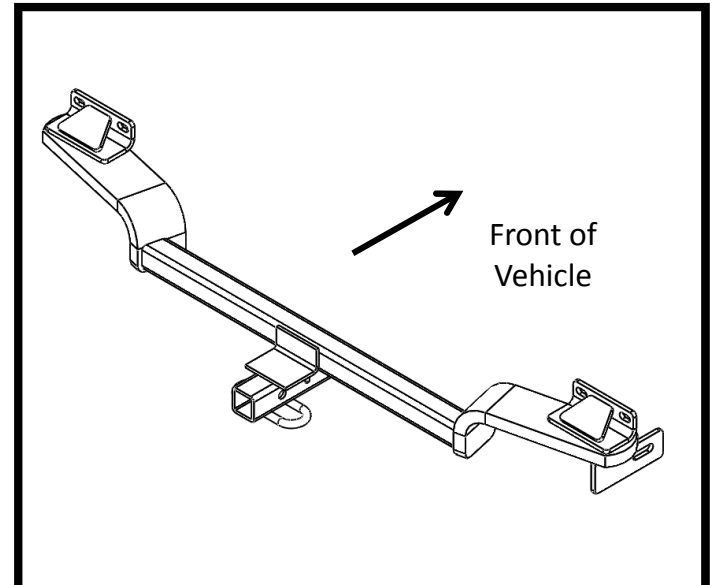
Representative Vehicle Photo

Equipment Required:

Safety Glasses	Ratchet	17 mm 7/8" Sockets	Torque Wrench	17 mm 7/8" Wrench
6" Socket Extension	Universal Joint Socket	Lubricant or Soapy water		

DO NOT EXCEED LOWER OF TOWING VEHICLE MANUFACTURER'S RATING OR:

Hitch Type	Max Gross Trailer Weight	Max Tongue Weight
Weight Carrying	2000 lb. (908 kg)	200 lb. (90 kg)
Weight Distributing	X	X



Hitch Illustration






Always wear SAFETY GLASSES when installing hitch

Installation Instructions

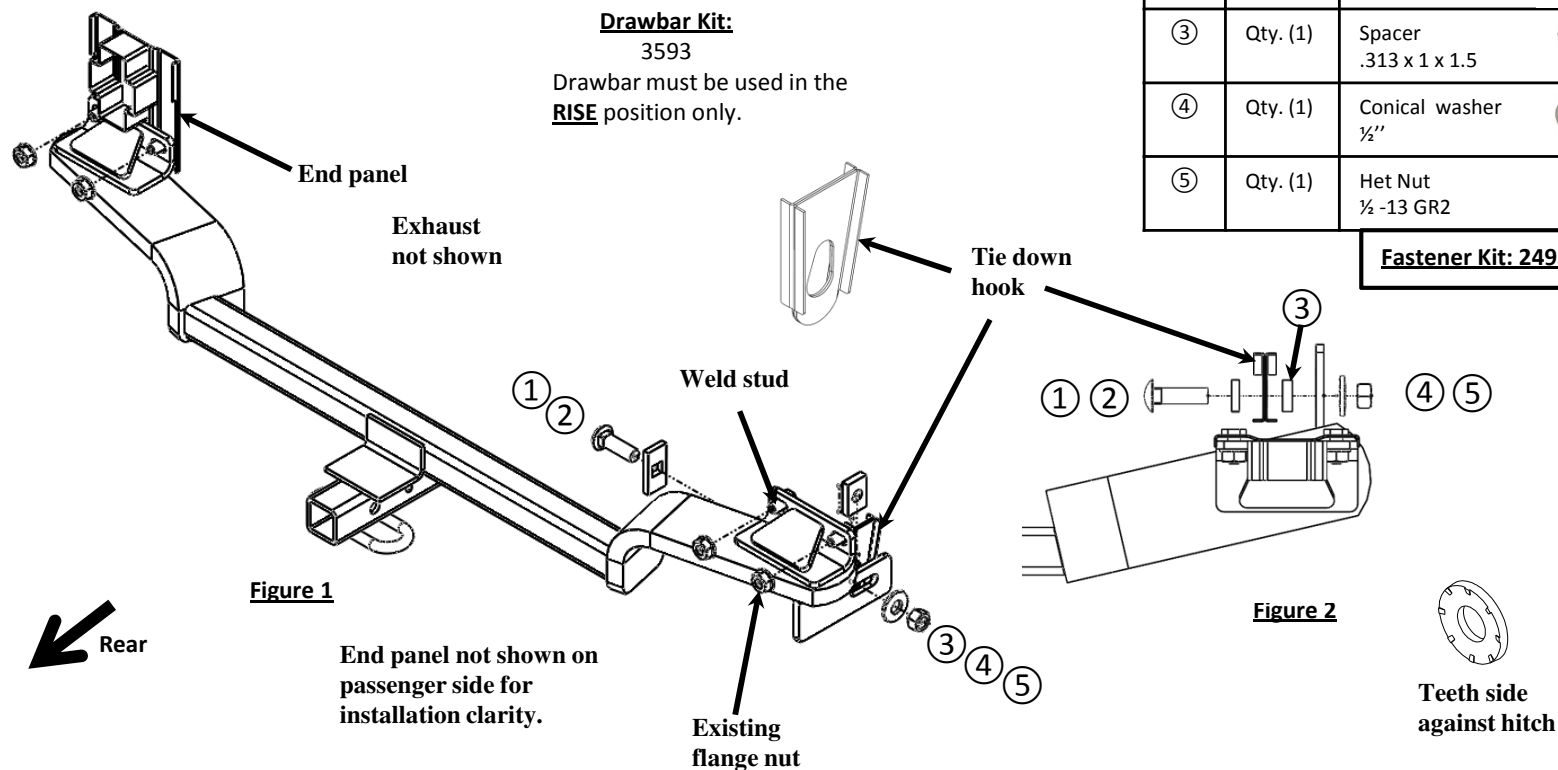
PART NUMBERS: 24933, 60371, 77320

Drawbar Kit:
3593

Drawbar must be used in the **RISE** position only.

①	Qty. (1)	Carriage bolt ½-13 x 1.75 GR8	
②	Qty. (1)	Spacer .250 x 1 x 2	
③	Qty. (1)	Spacer .313 x 1 x 1.5	
④	Qty. (1)	Conical washer ½"	
⑤	Qty. (1)	Het Nut ½ -13 GR2	

Fastener Kit: 24933F



Note: For easier install. Raise car on ramps or hoist. Assure that vehicle is blocked and that it is safe to be underneath.

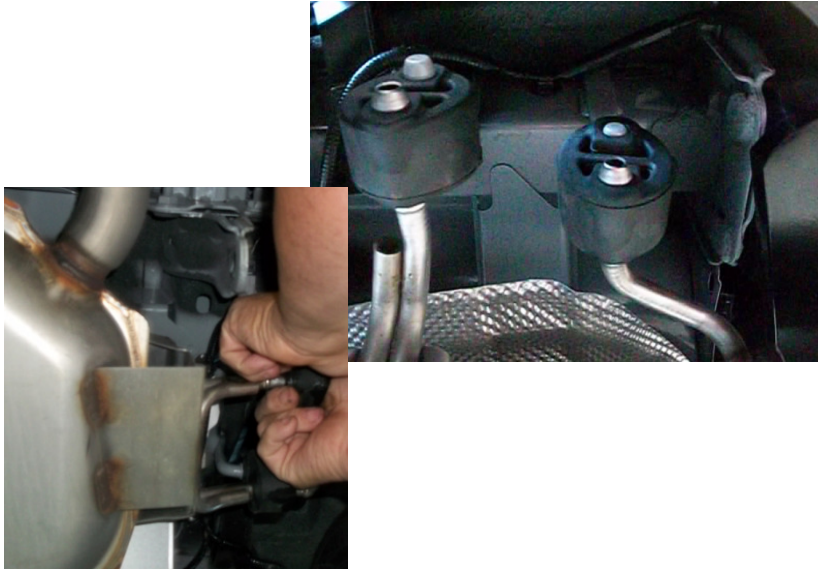
1. Lower exhaust -Lower exhaust system at the rubber isolator. Spraying a lubricant on the metal hanger rod and the rubber isolator helps removal.
2. Remove flange nuts - Remove the four lower M10 bumper nuts. There are 2 on the passenger side and 2 on the driver side.
3. Raise hitch - Raise hitch into position, using the 4 weld studs. Install the four M10 nuts removed in step 3 finger tight.
4. Install tie down fastener - Loosely install the remaining fasteners (items 1 thru 5) to the tie down hook as shown in figure 1 & 2.
5. Torque all fasteners - Tighten fasteners to specification using torque wrench. Note: Access to torque the 4 bumper bracket nuts may require loosening of the lower bumper fascia. If so, replace all fasteners and components after torqueing. **Tighten all M10 fasteners with torque wrench to 55 Lb.-Ft. (75 N*M) and all 1/2 GR8 fasteners with torque wrench to 110 Lb.-Ft. (149 N*M)**
6. Reinstall exhaust - Raise exhaust back into position on exhaust hangers.

⚠ Proper torque is needed to keep the hitch secure to the vehicle when towing.

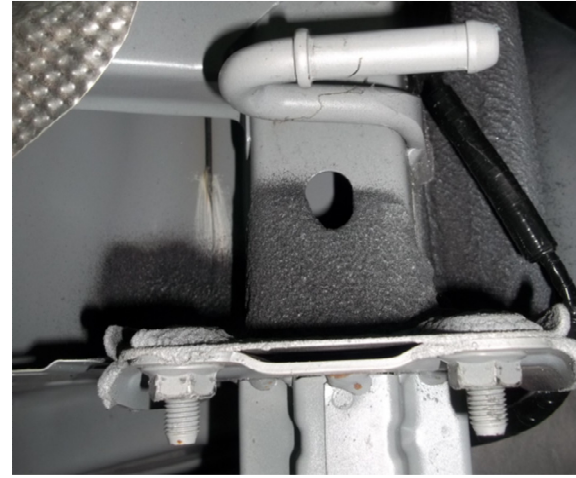
Note: check hitch frequently, making sure all fasteners and ball are properly tightened. If hitch is removed, plug all holes in trunk pan or other body panels to prevent entry of water and exhaust fumes. A hitch or ball which has been damaged should be removed and replaced. Observe safety precautions when working beneath a vehicle and wear eye protection. Do not cut access or attachment holes with a torch.

This product complies with safety specifications and requirements for connecting devices and towing systems of the state of New York, V.E.S.C. Regulation V-5 and SAE J684.

1. Lower exhaust system at the rubber isolator. Spraying a lubricant on the metal hanger rod and the rubber isolator helps removal. Support exhaust to prevent damage.



2. Remove the four lower M10 bumper nuts. There are 2 on the passenger side and 2 on the driver side.



3. Raise hitch into position, using the 4 weld studs. Install the four M10 nuts removed in step 3 finger tight.



4. Loosely install the remaining fasteners (items 1 thru 5) to the tie down hook as shown in figure 1 & 2.



5. Torque all fasteners - Tighten fasteners to specification using torque wrench. Note: Access to torque the 4 bumper bracket nuts may require loosening of the lower bumper fascia. If so, replace all fasteners and components after torquing. **Tighten all M10 fasteners with torque wrench to 55 Lb.-Ft. (75 N*M) and all 1/2 GR8 fasteners with torque wrench to 110 Lb.-Ft. (149 N*M)**



⚠ Proper torque is needed to keep the hitch secure to the vehicle when towing.

6. Raise exhaust back into position on exhaust hangers.

